

Flex-Vent Accessories



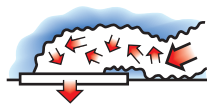
FlexFlow Elbow — For Maximum Airflow

The FlexFlow Elbow installs in seconds over the flexible ductwork jacket, creating the perfect 90° angle for maximum air flow and energy efficiency. It's a fraction of the cost of a galvanized elbow — both in material costs and

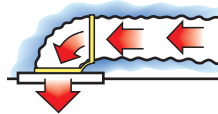
labor — and it doesn't leak or require insulation.

Diameter: One size fits all 6" to 16" duct
UL tested and listed

Restricted Air Flow



Maximum Air Flow with FlexFlow Elbow



Thermasleeve

Energy efficient pipe insulation in either metallized or polyethylene sleeve. Thick insulation blanket. Fast and economical to install over round sheet metal duct. UL classified for pipe and equipment covering.

Permeability Rating: 0.1 • **Flame Spread:** Less than 25

Smoke Developed: Less than 50

Length: 5' standard, New 25' dispenser case

Diameters: 4, 5, 6, 7, 8, 10, 12, 14, 16 and 18 inches

R-Value: 4.2, *6.0, and *8.0

*R-6.0 and R-8.0 only available in silver jacket

Over 60 Years of Flexible Duct Experience

Since 1953, Thermaflex® has been the premier supplier of flexible duct for HVAC applications. We offer the most comprehensive product line of flexible duct products for residential and commercial installations.

The Best Choice for Residential

Our Flex-Vent® flexible duct line provides many of the same quality and engineering features as our Pro Series commercial line with products specially tailored to the residential market. Flex-Vent® offers a spectrum of residential insulated and non-insulated flexible duct products that meet virtually any performance or budget need.

Ten Year Warranty

Flex-Vent® offers a 10 Year Warranty on its products, making them the best-backed residential line in the HVAC industry.

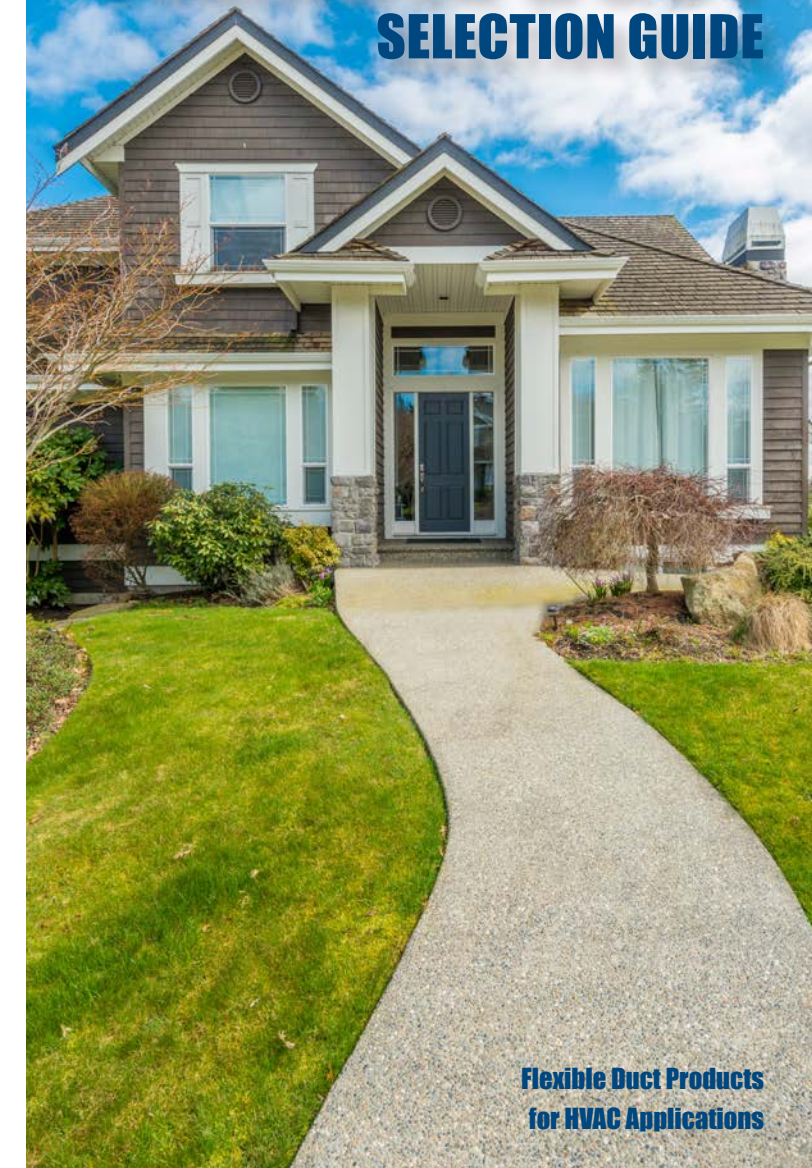
This assures that all Flex-Vent® insulated and noninsulated products are free from defects in materials and factory workmanship for a period of 10 years from the date of manufacture. The first five years of installation in the case of any warranty issue or product failure, Thermaflex will cover all duct cost, material cost and any reasonable labor cost, provided the Flex-Vent® product was properly installed in accordance with our written installation. For the second five years of installation, for a maximum of ten and in the event of any Flex-Vent® product failure or warranty issue, Thermaflex® will make replacement of the defective duct only and no other cost will be reimbursed. (Ducts exposed to direct or indirect sunlight are excluded from this warranty.)

When you choose Flex-Vent®, you're backed by a company with more than a half century of experience. When you buy from Thermaflex®, you get the best. Our warranty is second to none. Flex-Vent® products are built stronger to last longer. Can you afford anything less?

Thermaflex®
381 Carwellyn Rd
P.O. Box 927
Abbeville, SC
29620

Flex-Vent®

RESIDENTIAL FLEXIBLE DUCT SELECTION GUIDE



**Flexible Duct Products
for HVAC Applications**



1-800-459-4822 • www.thermaflex.net

Corporate Headquarters: 381 Carwellyn Road • Abbeville, SC 29620
Distribution: Phoenix, AZ • Cairo, GA • Mississauga, ON Canada

The Pink Panther™ & © 1964-2008 Metro-Goldwyn-Mayer Studios Inc. All Rights Reserved. The color PINK is a Registered trademark of Owens Corning. ©2008 Owens Corning.





Flex-Vent® installs faster. Less waste. Oversize core for easy fittings.

The #1 Choice for Residential Flexible Duct

**Easy to Work With.
Easy to Feel Good About.**



Our Flex-Vent® line gives you many commercial quality performance features in a product priced for the residential market.

For example, Flex-Vent® has the same strong steel helix for strength and rigidity so your flexible duct holds its shape and keeps its shape. Three grades of products let you select the flexible duct you want for your application, and Flex-Vent® quality lets you install fast with confidence. Another big advantage is our ten year warranty. Should something go wrong, we'll replace your Flex-Vent® and even pay for reasonable labor and material costs. This warranty protection is only valid if our flexible duct is installed to our written instructions.



Fifty years of experience has gone into the development of Flex-Vent®. It holds its shape, cuts cleanly, and connects to fittings fast.

You'll like it because it's easy to work with. And with our quality and warranty, Flex-Vent® is easy to feel good about.

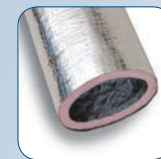
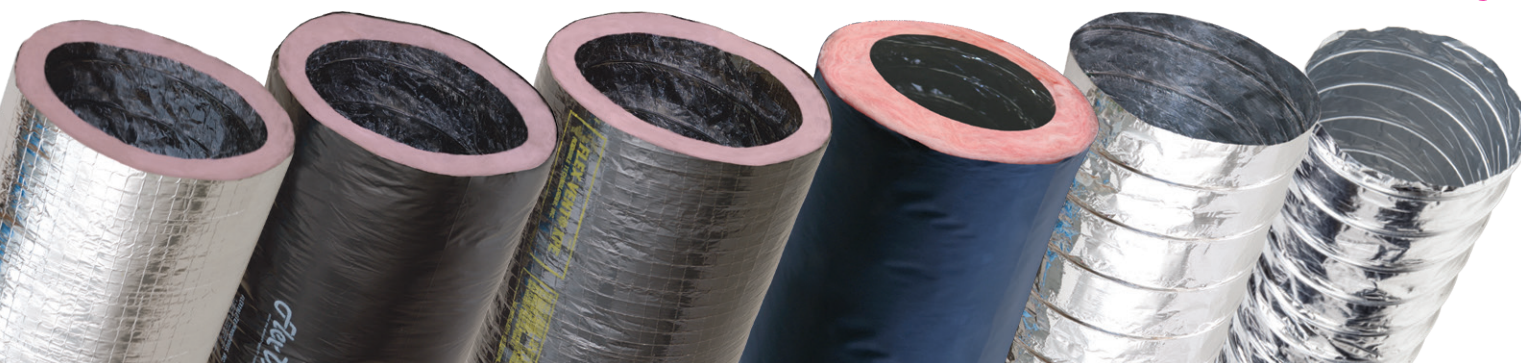
Make sure your flexible duct is certified by UL and the Air Duct Council (ADC). All Thermaflex® duct is UL and ADC Certified. Thermaflex complies with the standards of the National Fire Protection Association NFPA No. 90A and 90B.

Flex-Vent® Advantages

- Fast, economical installation.
- Oversized cores for proper fit.
- Easily shaped to fit oval inlets.
- Superior insulation and thermal performance.
- UL181 listed and complies with NFPA Standards 90A & 90B.
- Complies with most state and federal standards or codes.
- Ideal for residential air distribution and venting applications.
- Flex-Vent® is competitively priced and backed by a 10 Year Warranty.
- GreenGuard® Gold Certified which is the industry's most recognized Indoor Air Quality (IAQ) rating.
- Made with Owens Corning™ EcoTouch® formaldehyde-free Insulation. Made with 99% natural materials and highest recycled content. Also, it is the only fiberglass insulation listed in the USDA BioPreferred Catalog.



The Pink Panther™ & © 1964-2008 Metro-Goldwyn-Mayer Studios Inc. All Rights Reserved. The color PINK is a Registered trademark of Owens Corning. ©2008 Owens Corning.



KM Flexible Duct

Strong polyester film laminated and encapsulating a heavy, corrosion resistant steel wire helix, forms the inner core and supports a thick blanket of fiberglass insulation. The outer vapor barrier is a bi-directional, reinforced metallized vapor barrier

which will not unravel. The smooth air tight inner core of polyester is designed for low to medium pressure systems.

- Diameter:** 4-22 inches ID
- Pressure Rating:** (WG)
- Positive:** 10 inches (4"-16" ID), 6 inches (18"-22" ID)
- Negative:** ½ inch (4"-20" ID)
- Velocity:** 5000 FPM
- Temperature Range:** -20°F to 250°F cont.
- R-Value:** R-4.2, R-6.0, R-8.0
- Certified UL 181 & NFPA 90A and 90B for US & Canada
- 10 Year Warranty
- GreenGuard® Microbial Resistant Product



KP Flexible Duct

Strong polyester film laminated and encapsulating a heavy, corrosion resistant steel wire helix, forms the inner core and supports a thick blanket of fiberglass insulation over a fiberglass scrim. The outer vapor barrier is a jacket of durable black polyethylene. Designed for low to medium pressure systems.

- Diameter:** 4-20 inches ID
- Pressure Rating:** (WG)
- Positive:** 10 inches (4"-16" ID), 6 inches (18"-20" ID)
- Negative:** ½ inch (4"-20" ID)
- Velocity:** 5000 FPM
- Temperature Range:** -20°F to 250°F cont.
- R-Value:** R-4.2, R-6.0, R-8.0
- Certified UL 181 & NFPA 90A and 90B for US & Canada
- 10 Year Warranty



KPE Flexible Duct

Strong polyester film laminated and encapsulating a heavy, corrosion resistant steel wire helix, forms the inner core and supports a thick blanket of fiberglass insulation. Outer vapor barrier is bi-directional scrim reinforced gray polyester.

Designed for low to medium pressure systems.

- Diameter:** 4-20 inches ID
- Pressure Rating:** (WG)
- Positive:** 10 inches (4"-16" ID), 6 inches (18"-20" ID)
- Negative:** ½ inch (4"-20" ID)
- Velocity:** 5000 FPM
- Temperature Range:** -20°F to 250°F cont.
- R-Value:** R-4.2, R-6.0, R-8.0
- Certified UL 181 & NFPA 90A and 90B for US & Canada
- 10 Year Warranty



R-KD Flexible Air Duct

Insulated for outdoor heating and cooling in low/medium pressure systems, the R-KD is ideal for add-on mobile home remote air conditioning and for connecting doublewide units. It's also popular in modular building systems. Perfect for handling misalignment between systems components (can be easily redirected around obstacles, unlike costly stainless steel ducts).

handling misalignment between systems components (can be easily redirected around obstacles, unlike costly stainless steel ducts).

- Diameter:** 6-14 inches ID
- Pressure Rating:** (WG)
- Positive:** 6 inches (18"-20" ID)
- Negative:** ½ inch (6"-12" ID)
- Velocity:** 5000 FPM
- Temperature Range:** -20°F to 250°F
- R-Value:** R-4.2, R-6.0, R-8.0
- Certified UL 181 & NFPA 90A and 90B for US & Canada
- 10 Year Warranty

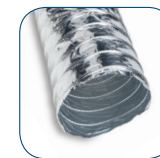


MC Air Connector

Use this non-insulated and economically priced flexible connector in medium to low pressure A/C systems and in air venting and drying applications. The corrosion resistant spring steel wire helix is laminated with multiple layers of clear and metallized polyester film, fully laminated with adhesive. Oversized for quick insulation.

metallized polyester film, fully laminated with adhesive. Oversized for quick insulation.

- Diameter:** 3-20 inches ID
- Pressure Rating:** (WG)
- Positive:** 10 inches (3"-14" ID), 6 inches (16"-20" ID)
- Negative:** 1 inch (3"-12" ID), ½ inch (14"-18" ID)
- Velocity:** 5000 FPM
- Temperature Range:** -20°F to 250°F cont.
- Certified UL 181 & NFPA 90A and 90B for US & Canada
- 10 Year Warranty



Thermaflex® DV Dryer Vent Hose

This non-insulated, heavy-duty aluminum duct is ideal for gas and electric dryers. It is tear, puncture and fire resistant.

- Diameter:** 4 inches
- Length:** 8 feet
- Listed to UL 2158A Clothes Dryer Transition Duct
- 10 Year Warranty

