



PREFABRICATED SHEET METAL
DUCTS & FITTINGS

PRODUCT CATEGORY INDEX

Page	Description
2	Round Pipe, Elbows, Angles & Register Boots
3-4	Trunk Duct, Fittings & Installation Accessories
5	Return Air Products
6	Oval Pipe & Fittings
7	Wall Stack & Fittings
8	Sheet Metal and Ductboard Collars
9-10	Sheet Metal and Ductboard Takeoffs
11	Air-Tite Takeoffs
12	Tees, Wyes, Reducers, End Caps & Accessories
13	Insulated Ceiling Boxes and CRD Boots
14	Register Boxes and Ceiling Outlets
15	Furnace Fittings and Accessories
16	Venting Products and Mobile Home Kits
17	Black Pipe & Fittings
18	Spiral Pipe & Fittings
19-20	Product Number Index
21-22	Technical Information



Call us toll-free at:

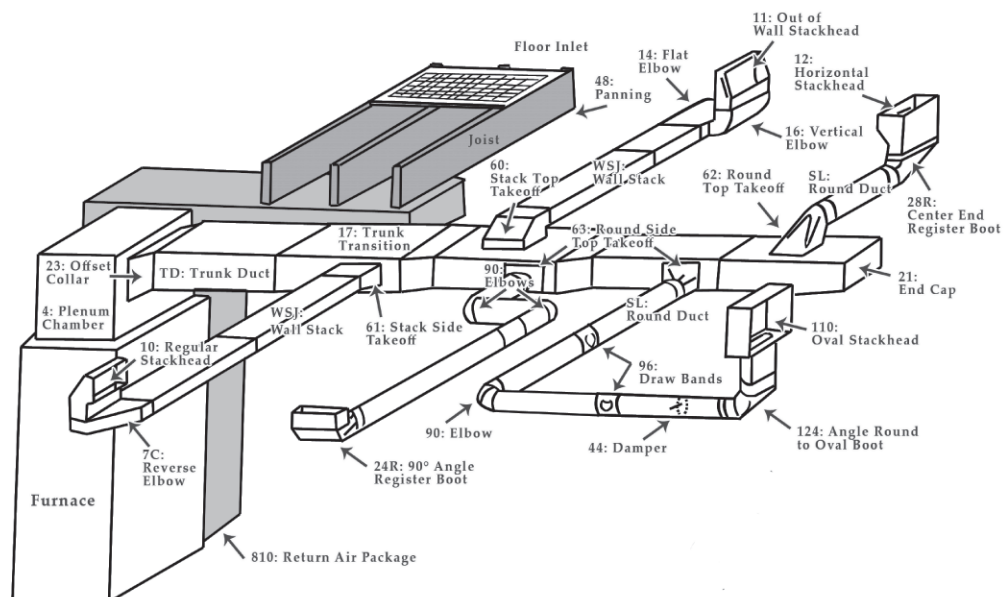
- Philadelphia • (800) 523-1052
- Greenville • (800) 229-2803
- Indianapolis • (800) 490-7707
- Mississippi • (800) 541-6706
- Nebraska • (800) 801-0336
- Idaho • (866) 289-9908
- www.southwarkmetal.com

About Us

Southwark Metal Manufacturing Company is a third generation family owned company that has been manufacturing prefabricated sheet metal ducts and fittings for over 60 years.

With six manufacturing plants across the United States, we guarantee to exceed your highest expectations with our quality products and superior service.

For all products within this catalog, please check with your local customer service representative for fitting sizes, availability, pricing, and submittal information.



ROUND PIPE, ELBOWS,
ANGLES, REGISTER BOOTS



SNAPLOCK PIPE

No tools required for assembly!

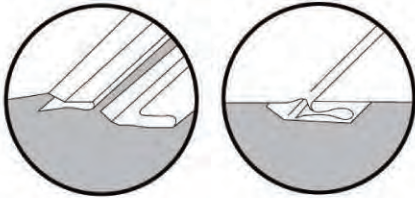
Simply start at one end and easily snap pipe together. One person can quickly assemble up to 10 ft. lengths.

The male end's **self-starting crimp** is knurled sufficiently so that the crimp "falls in" and yet, once assembled, completes a rigid, leak-proof connection that meets +2" w.g. pressure.

- Available in 2ft, 3ft, 4ft, 5ft, and 10ft lengths
- Available in 30Ga, 28Ga, 26Ga, and 24Ga steel.

Open view

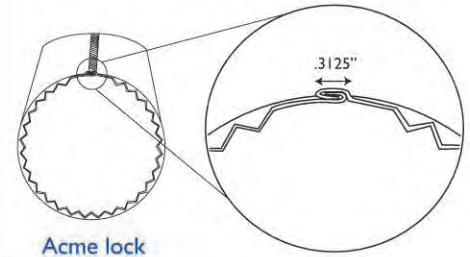
Closed view



MUI20

Conductor Pipe

- Available in 30Ga, 28Ga, and 26Ga
- 10 ft in length
- 3" and 4" diameters only
- Acme type lock, shipped closed



Acme lock



90° ADJUSTABLE ELBOW

Featuring:

- 4 pc. assembly for diameters 3" - 20"
- 5 pc. assembly for diameters 22" - 24"
- Crimp and bead male connection and straight female connection
- Meets +/- 2" w.g. pressure overall



45° ADJUSTABLE ANGLE

REGISTER BOOTS



24R

90° Register Boot



27R

Straight Register Boot



26R

45° Register Boot



28R

Center End Register Boot

No. 28RL Left
No. 28RR Right



29RO

2" Offset Register Boot



17CR

Offset Adjustable Register Boot



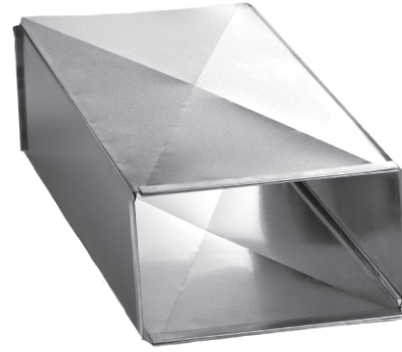
PH5

90° Basement Boot

TRUNK DUCT

Featuring:

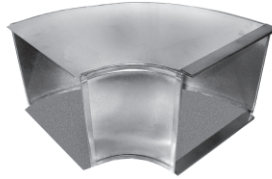
- Available in 12", 30", 36", 48", 60" and 96" lengths
- Furnished in button snap-lock with s-cleat and drive connections
- Cross broken for extra stiffening strength
- E-lock duct also available
- Beaded duct also available



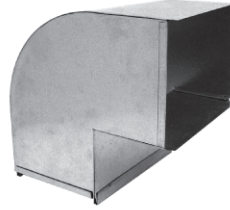
13
45° Flat
(Broadway) Angle
Radius Throat



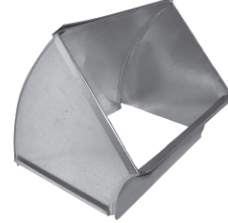
13S
45° Flat
(Broadway) Angle
Square Throat



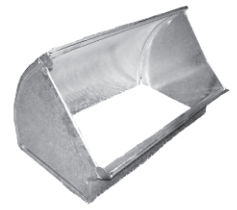
14
90° Flat
(Broadway) Elbow
Radius Throat



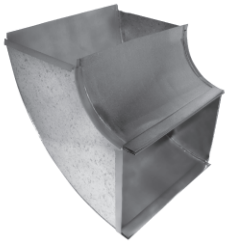
14S
90° Flat
(Broadway) Elbow
Square Throat



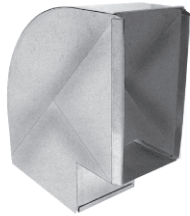
15
45° Vertical
(Shortway) Angle
Radius Throat



15S
45° Vertical
(Shortway) Angle
Square Throat



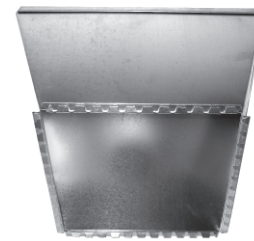
16
90° Vertical
(Shortway) Elbow
Radius Throat



16S
90° Vertical
(Shortway) Elbow
Square Throat



20
Straight Collar



23AT
Transition Collar



42
Volume Damper



21
End Cap



23
Offset Collar

1109
Transition Collar

Duct Size	Plenum Opening
14 x 8	12 x 10
16 x 8	12 x 11
18 x 8	12 x 12
20 x 8	12 x 14
22 x 8	12 x 15
24 x 8	12 x 16
26 x 8	14 x 15
28 x 8	14 x 16
30 x 8	16 x 15
32 x 8	16 x 16

Duct Size	Plenum Opening
8 x 8	8 x 10
10 x 8	8 x 10
12 x 8	10 x 10
14 x 8	10 x 12
16 x 8	10 x 12
18 x 8	10 x 14
20 x 8	10 x 16
22 x 8	10 x 18
24 x 8	10 x 20
26 x 8	12 x 18
28 x 8	12 x 18
30 x 8	12 x 20
32 x 8	14 x 20



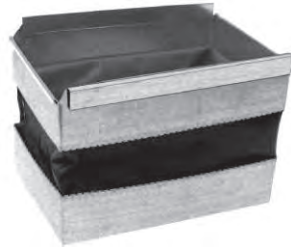
17
Trunk Transition
(tapered to one side)



17C
Trunk Reducer
(tapered to center)



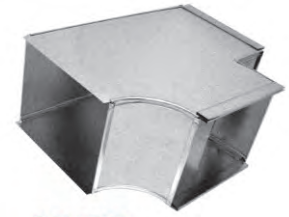
18
Connector
Plenum to Trunk



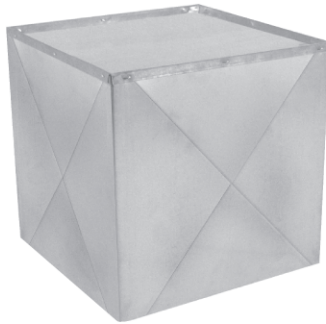
47
Connector
Furnace to Plenum



14TT
Trunk Tee



17TT
Trunk Tee



4
Plenum Chamber
• Custom Sizes
• Shipped knocked down
or made-up by request
• "B" style available with flange

ADJUSTABLE PLENUMS

Please note: Actual plenum height is 2" less than listed size.

TO INSTALL:

- 1) Cut raw edges of side panels to desired width and height.
- 2) Trim top to desired width and depth.
- 3) Assemble 3 sides, slide top into side panel pockets, then position fourth side.
- 4) To complete, secure assembly with sheet metal screws.



49T
Adjustable Plenum Top

49P
Adjustable Plenum Side

49C
Complete Adjustable Plenum



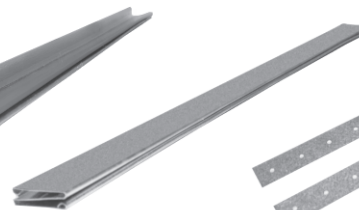
8D
Drive Cleat
8" and 10" available



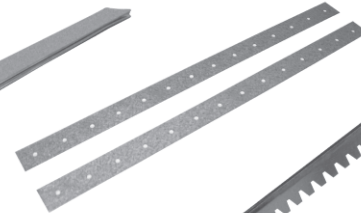
37
1/2" Leg
Rigid S-Cleat



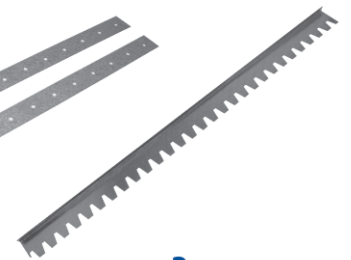
135
1" Leg
Rigid S-Cleat



6S
S-Cleat



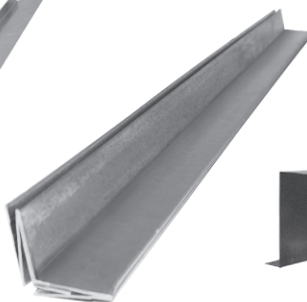
5
Duct Hanger
10" and 12" available



3
Fiberglass Extension



1106
Cold Air Frame



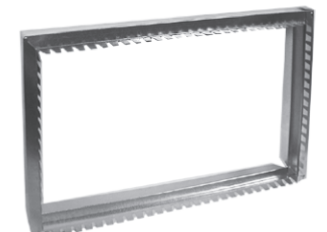
1112
Plenum Corner



133
Line Cover



134
Can Stock



FR
Filter Rack

RETURN AIR PRODUCTS



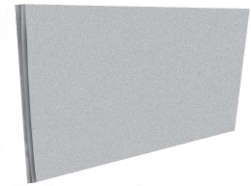
COLD AIR BOOT



35
Trunk Reducer



35A
Trunk Reducer



48
Panning Material



170
Return Air Pan



31
Return Air Frame



137
Drain Pan
¾" Slip Fitting

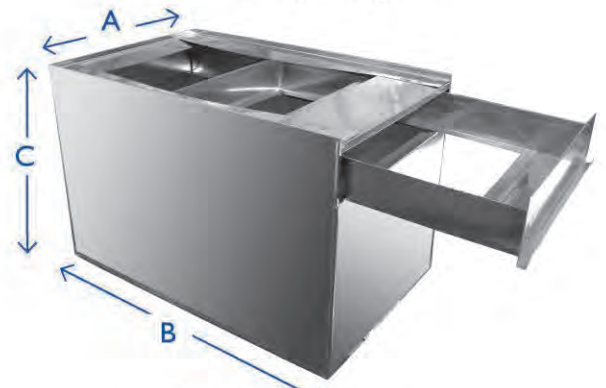
RETURN AIR PACKAGE

Complete package consisting of:

- 1 - #20 Starting collar
- 2 - 30" duct sections
- 1 - return air plenum with 1" filter rack
- 6 - 10" drive straps

Shipped knocked down in one carton

Return Air Pkg	Duct Size Range	Boot Only
810	20x10 - 20x16	810B
811	25x10 - 25x16	811B
812	20x10 - 20x14	812B
813	25x10 - 25x14	813B
814	20x8 - 20x16	814B
815	24x8 - 24x16	815B
816	20x8 - 20x14	816B
817	24x8 - 24x14	817B



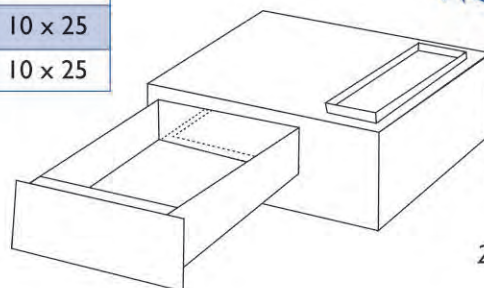
FB

Furnace Box with Filter Drawer
Also available with Hinged Door

Part No.	A	B	C	Filter Size
FB1428	14¾"	28½"	18½"	14x25
FB1728	17¾"	28½"	18½"	16x25
FB2128	21¾"	28½"	18½"	20x25
FB2428	24¾"	28½"	18½"	20x25

Part No.	'A'	'B'	'C'	Return Duct Size
SB30	30"	20"	10"	8 x 24
SB38	38"	26"	15"	10 x 25
SBF30	30"	22"	15"	8 x 24
SBF32	32"	22"	15"	8 x 24
SBF36	36"	26"	15"	10 x 25
SBF38	38"	28"	15"	10 x 25

SB
Return Air Support Box



SBF
Return Air Support Box with Filter Rack

22 x 28 drawer accommodates 1", 4" and 5" 20x25 filters

OVAL PIPE and FITTINGS

Pipe Size	Height	Circumference	Area	CFM Capacity at .10 IWC
5"	2 1/2"	15.7"	17.2 sq in	60 CFM
6"	2 7/8"	18.8"	22.2 sq in	78 CFM
7"	3"	22.0"	27.3 sq in	104 CFM
8"	3 1/16"	25.1"	32.2 sq in	190 CFM

OVAL PIPE



All oval pipe is made from 30Ga galvanized steel.

WALL STACK VS. OVAL PHYSICAL COMPARISON			

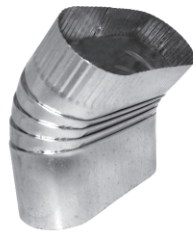
- No. 160** 60" Oval Pipe Joint
- No. 100** 100" Oval Pipe Joint
- No. 112** 112" Oval Pipe Joint
- No. 113** 113" Oval Pipe Joint
- No. 114** 114" Oval Pipe Joint



113
45° Flat
(Broadway)
Oval Angle



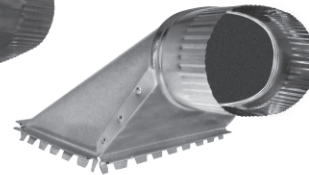
114
90° Flat
(Broadway)
Oval Elbow



115
45° Vertical
(Shortway)
Oval Angle



116
90° Vertical
(Shortway)
Oval Elbow



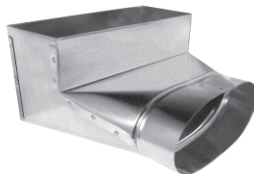
162
Top Oval
Takeoff



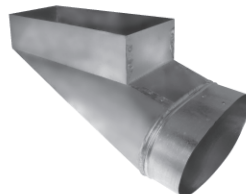
163
Side Oval
Takeoff



127R
Straight Oval
Register Boot



124R
90° Oval
Register Boot



128R
End Oval
Register Boot



127
Oval to Round
Straight Boot



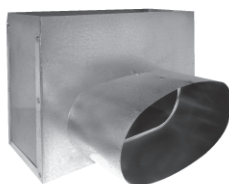
124
Oval to Round
90° Boot



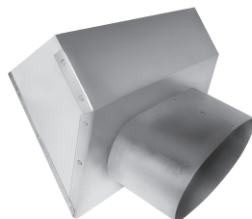
128
Oval to Oval
Reverse Boot



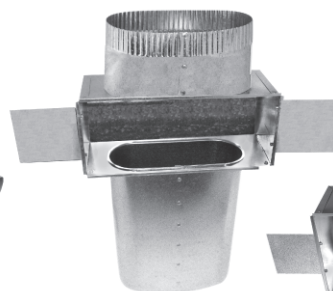
106
Oval to Round
Reverse Boot



355
Straight Oval
Register Box



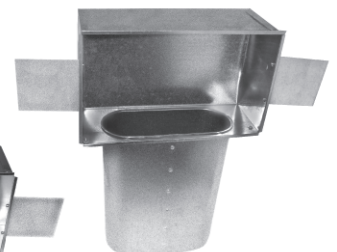
360
Angle Oval
Register Box



150
Oval Stackhead
with Collar



111
Register
Outlet



110
Oval
Stackhead

WALL STACK and FITTINGS

WALL STACK

Featuring:

- 12", 24", 30", 60", 96", 100" and 113" lengths available
- Two pieces per section
- Furnished in button snaplock
- No tools and no indentations, just snap it and it's closed!



I 32
Adjustable
"A" Adapter
Available in
2¼ x 10,
2¼ x 12, or
2¼ x 14

STACKHEADS



WS11
Projection
Stackhead



WS12
Horizontal
Stackhead



WS9
Double
Stackhead



WS10
Stackhead



WS10X
Long Throat
Stackhead with Ears



I 33
Adjustable
"B" Adapter
Available in
4x10 - 3¼x10,
4x10 - 3¼x12, or
4x10 - 3¼x14



24
90° Stack Boot



27
Straight
Stack Boot



28
End Stack Boot



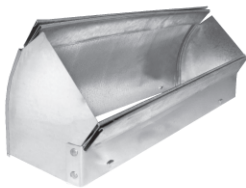
26
45° Stack Boot



WS17
Stack Transition



WS7C
Reverse Stack
Elbow (Center)
No. WS7L Left
No. WS7R Right



WS15
45° Vertical
(Shortway)
Stack Angle



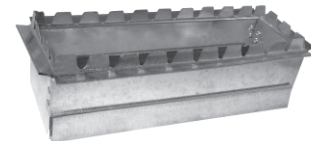
WS16
90° Vertical
(Shortway)
Stack Elbow



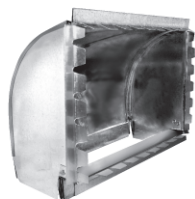
WS13
45° Flat
(Broadway)
Stack Angle



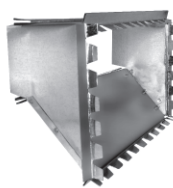
WS14
90° Flat
(Broadway)
Stack Elbow



WS20
Straight Stack
Collar



WS60
Top Stack
Takeoff



WS61
Side Stack
Takeoff



WS21
Stack
End Cap



WS45
Stack Damper



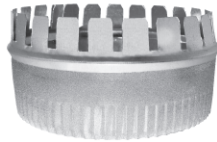
PHEXT
PH Extension
10" long

SHEET METAL COLLARS

SHEET METAL and DUCTBOARD COLLARS



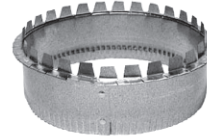
120SC
Snap Collar



97
Collar
97NC
No Crimp



97LS
Long Collar
97LSWD
with Damper



1051
Collar
1050
No Crimp



1150
Long Collar
1149
With Damper

SHEET METAL SPIN COLLARS



156
Spin Collar



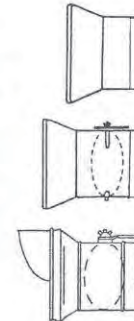
156S
Spin Collar
with Scoop



156D
Spin Collar
with Damper



156SD
Spin Collar
with Scoop
and Damper



156BM
Bellmouth
Spin Collar
156DBM
with Damper
156SDBM
with Scoop and
Damper

DUCTBOARD SPIN COLLARS



97FG
Spin Collar



98
Spin Collar
with Scoop



97FGWD
Spin Collar
with Damper



98WD
Spin Collar
with Scoop
and Damper

DUCTBOARD COLLARS



84ST
Ductboard Collar
84STWD
with Damper

122SC
Snap Collar
1 1/2" or 2"
Ductboard

121SC
Snap Collar
1" or 1 1/2" Ductboard



SHEET METAL and DUCTBOARD TAKEOFFS



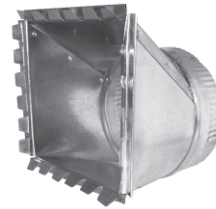
62
Top Takeoff
(Metal)

Pipe Size	Base Opening
4"	4 x 6
5"	5 x 6
6"	6 x 6
7"	7 x 7
8"	8 x 8
9"	10 x 10
10"	10 x 10
12"	12 x 12
14"	14 x 14



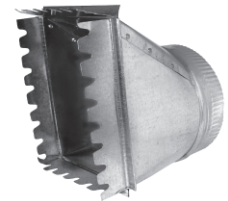
62FG
Top Takeoff
(Ductboard)

Pipe Size	Base Opening
4"	4 x 6
5"	5 x 6
6"	6 x 6
7"	7 x 7
8"	8 x 8
9"	10 x 10
10"	11 1/2 x 10
12"	12 x 12
14"	14 x 14



63
Side Takeoff
(Metal)

Pipe Size	Base Opening
4"	6 x 6
5"	6 x 6
6"	6 x 6
7"	6 x 8
8"	6 x 10
9"	7 x 12
10"	7 x 14
12"	8 x 18
14"	8 x 20
16"	10 x 21



63FG
Side Takeoff
(Ductboard)

Pipe Size	Base Opening
4"	6 x 6
5"	6 x 6
6"	6 x 6
7"	6 x 8
8"	6 x 10
9"	7 x 12
10"	7 x 14
12"	8 x 18
14"	8 x 20



2016
Adjustable Takeoff
(Ductboard)

Pipe Size	Base Opening
4"	4 x 6
5"	5 x 6
6"	6 x 7
7"	7 x 8
8"	7 x 10
9"	9 x 11
10"	10 x 12
12"	12 x 16
14"	14 x 19



34PLF
Adjustable Takeoff
(Ductboard)

Pipe Size	Base Opening
5"	5 x 6
6"	6 3/8 x 6 3/8
7"	7 x 8
8"	6 3/8 x 10



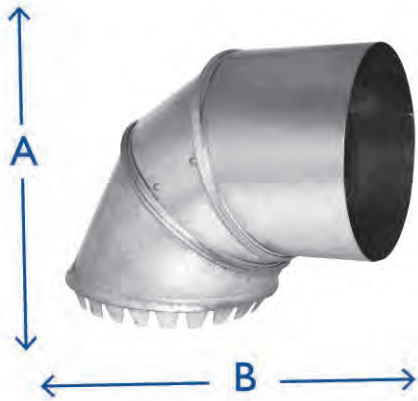
63A
Adjustable Takeoff
(Metal)

Pipe Size	Base Opening
4"	4 x 6
5"	5 x 6
6"	6 x 7
7"	7 x 8
8"	7 x 10,
9"	9 x 11
10"	10 x 12
12"	12 x 16
14"	14 x 19
16"	14 x 18
18"	18 x 18



63AFG
Adjustable Takeoff
(Ductboard)

Pipe Size	Base Opening
4"	4 x 6
5"	5 x 6
6"	6 x 7
7"	7 x 8
8"	7 x 10
9"	9 x 11
10"	10 x 12
12"	12 x 16
14"	14 x 19



EPI5
Full Tab Takeoff (Metal)

Pipe Size	Base Opening	A	B
4"	6 3/8"	7 1/4"	9 1/4"
5"	6 3/8"	7 1/4"	9 1/4"
6"	7"	7 1/2"	11"
7"	8"	8 1/2"	12 1/2"

Features 3/4" tabs, tapered collar, and no crimp.
1 7/8" rise when installed.



HT15
Half-Tab Takeoff
(Metal)

Pipe Size	Base Opening
4"	6 3/8"
5"	6 3/8"
6"	7"
7"	8"



64
Double Top Takeoff
(Metal)

Pipe Size	Base Opening
5"	6 x 10
6"	7 x 10
7"	7 x 14
8"	8 x 14



S5
Pivot Takeoff
(Metal)

Pipe Size	Base Opening
5"	6"
6"	7"
7"	8"



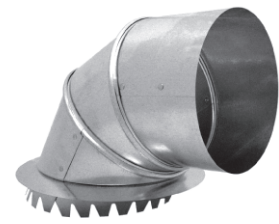
87
Lever Lock Takeoff
(Metal)

Pipe Size	Base Opening
5"	6"
6"	7"
7"	8"



2015
Round Takeoff
Elbow (Ductboard)

Pipe Size	Base Opening
5"	6"
6"	7"
7"	8"
8"	9"



2022
Round Takeoff
(Ductboard)

Pipe Size	Base Opening
5"	6"
6"	7"
7"	8"
8"	9"

AIR-TITE TAKEOFFS



Featuring:

- 1½" wide and 1/8" thick gasket, made with high tack adhesive-coated neoprene foam -- just peel and stick for easy installation
- Gasket includes 4 1/8" pre-drilled holes for sheet metal screws attachment
- RL-2 rivet seam (+/- 4" w.g.) with 1/2" overlap, using 1/8" rivets
- Dampers available for 1/4" and 3/8" square and round bearings; also available 3/8" continuous rod damper (*by request*)
- Damper fittings available with 1½" or 2" standoffs (*by request*)



ATT
Airtite Takeoff



ATD
Airtite Takeoff
with Damper



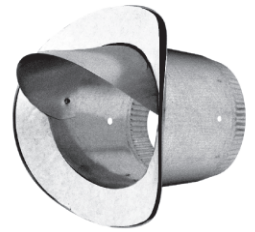
ATS
Airtite Takeoff
with Scoop



ATSD
Airtite Takeoff
with Scoop
and Damper



ATTRP
Round Pipe
Takeoff
ATDRP
with Damper



ATSRP
Round Pipe Takeoff
with Scoop
ATSDRP
with Scoop
and Damper



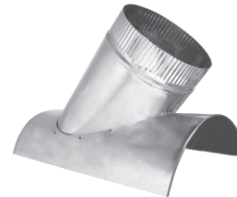
AT63
Rectangular
Airtite Takeoff
AT63WD
with Damper



ATHE
High Efficiency
Airtite Takeoff
ATHEWD
with Damper



ATBDM
Bellmouth
Airtite Takeoff
ATDBM
with Damper



ATTRP45
45° Saddle
Airtite Takeoff



ATTRP90
90° Saddle
Airtite Takeoff

Pipe Size	Base Opening
4"	6 x 6
5"	6 x 6
6"	6 x 6
7"	6 x 8
8"	6 x 10
9"	7 x 12
10"	7 x 14
12"	8 x 18
14"	8 x 20

Pipe Size	Base Opening
4"	5 x 10
5"	5 x 10
6"	6 x 12
7"	6 x 12
8"	6 x 12
9"	6 x 15
10"	6¾ x 16
12"	8½ x 18
14"	9½ x 20
16"	14 x 22

Collar Size	Bellmouth Size
6"	8"
7"	9"
8"	10"
10"	12"
12"	14"
14"	16"
16"	18"



AT62
Airtite Top Takeoff
AT62WD
with Damper



AT63A
Adjustable
Airtite Takeoff

TEES, WYES, REDUCERS and ACCESSORIES



TEE
No. 53 24" Long
No. 54 15" Long
 Available in
 26Ga or 24Ga



1060
 Free Flow Tee
 Available in 30Ga,
 26Ga, and 24Ga



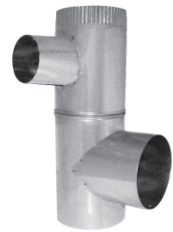
200
 Trunk Tee



201
 Straight-Thru Tee



202
 Reducing Tee



54SW
 Swivel Tee



SMOKE WYE
No. 50 15" Long
No. 51 24" Long



78
 Wye Branch



78-1
 One-Way
 Adjustable Wye



78-2
 Two-Way
 Adjustable Wye



715
 Splitter Wye



52
 Flue Wye



203S
 Stub Wye



582
 2 pc Reducer



58
 3 pc Reducer
 Available Crimped



55
 End Cap
 Available Crimped,
 With/Without Handle



117
 Flue Thimble



207QT
 90° Saddle Tee



208QY
 45° Saddle Wye



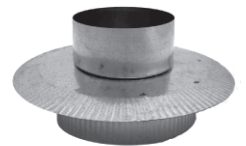
207
 90° Vent Saddle



208
 45° Vent Saddle



199
 H-Vent



64FR
 Flue Reducer

INSULATED CEILING BOXES and CRD BOOTS

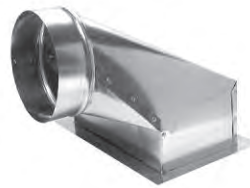


31PF
Plaster Frame

MR
Mounting Rails
Available in 24" or 26"



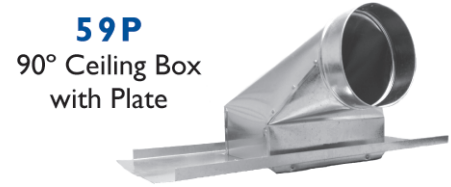
51F
Straight Ceiling Box
with Flange



59F
90° Ceiling Box
with Flange



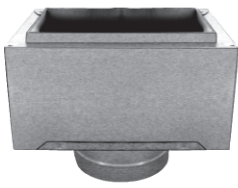
51P
Straight Ceiling Box
with Plate



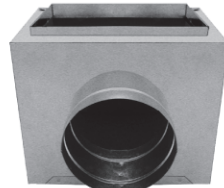
59P
90° Ceiling Box
with Plate

INSULATED CEILING BOXES

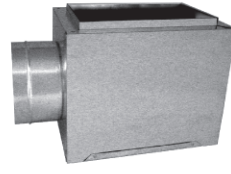
Liner is available in R4 (1"), R6 (1½"), or R8 (2") insulation.



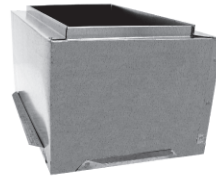
83
Top Outlet,
No Flange



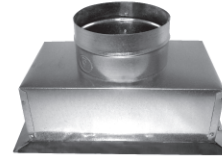
83S
Side Outlet,
No Flange



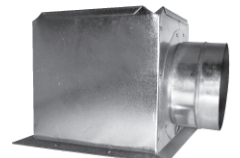
83E
End Outlet,
No Flange



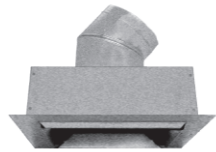
83TF
Top Flange
with Outlet



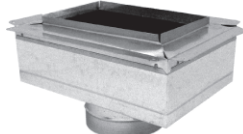
85
Bottom Flange
and Top Outlet



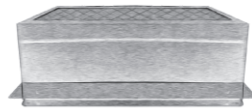
85S
Bottom Flange
and Side Outlet



85A
Bottom Flange,
Angle Attached



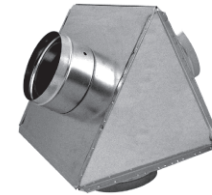
85DB
Bottom Flange
with Outlet
(Ductboard)



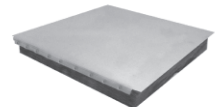
84DB
Bottom Flange
No Outlet
(Ductboard)



86
Slant Top
with Flange



577
Insulated Wye



577P
Insulated Wye
Panels

CEILING RADIATION DAMPER BOOTS

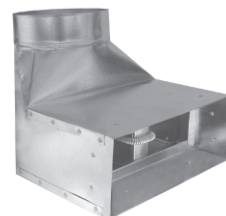
Boots are non-insulated. Features rectangular radiation damper, butterfly-type, UL Classified 555C (3-hr rating), 212° easy access fusible link. Damper is attached with matching rivets and mounting brackets on all four sides; position in throat varies fitting to fitting.



51CRD
Straight
CRD Boot



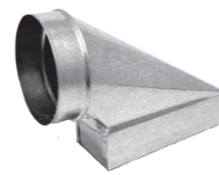
51FCRD
Straight
CRD Boot
with Flange



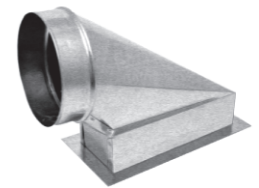
59CRD
90° CRD Boot



59FCRD
90° CRD Boot
with Flange

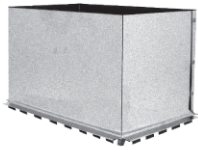


58CRD
Center End
CRD Boot



58FCRD
Center End
CRD Boot
with Flange

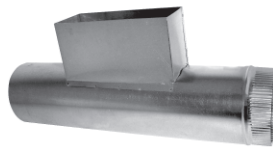
**REGISTER BOXES
and CEILING OUTLETS**



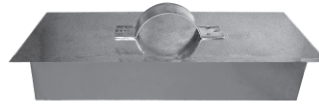
19RC
Register Collar



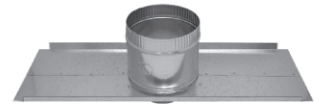
70
Register Takeoff



71
Register Tee



74
Register Cap



81
Ceiling Outlet
81D
with Damper



75
Register Box
7" Deep



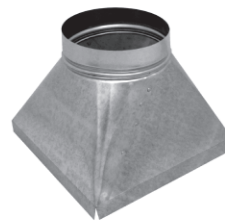
90
Floor Register Box
5" or 6" Deep



91
Floor Register Box
10" or 11" Deep



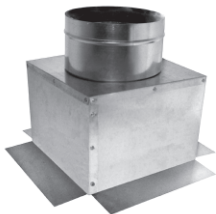
73
Square
Diffuser Box



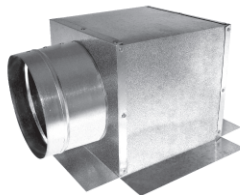
73C
Square to Round
Transition Outlet



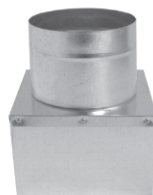
77
Square to Round
Diffuser Box



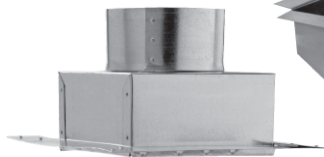
177
Ceiling Outlet



177S
Side Outlet



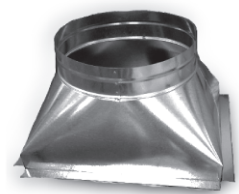
277
Square to Round
Diffuser Outlet,



277F
Square to Round
Diffuser Outlet,
with Flange



92
Funnel Register
Box with Flange



92B
Funnel Register Box
B-Box Style



77S
Square to Round
Diffuser Box,
Side Outlet



66WF
Ceiling Diffuser
Outlet



58WF
Diffuser Outlet
with Flange



72
Diffuser Tee



72WF
Diffuser Tee
with Flange



77WF
Diffuser Funnel with Flange

FURNACE FITTINGS and ACCESSORIES



83PC
Branch
Connector



86SC
Sleeve
Connector



97FC
Flex
Connector



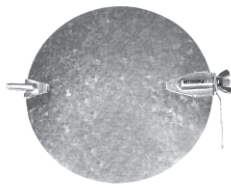
96
Drawband



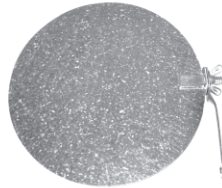
S75
Snap
Drawband



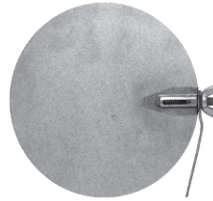
40
Damper
Section



44
Two Quad
Damper



44S
Damper
Fixed Hardware



44-1
One Quad
Damper



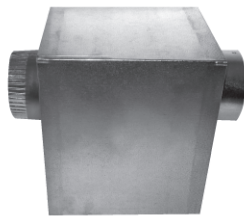
63FC
Ceiling Collar



142
Storm Collar



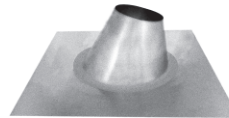
93
Elbow
Draft Vent



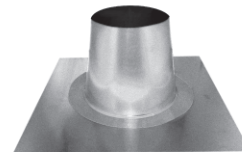
94
Horizontal
Draft Vent



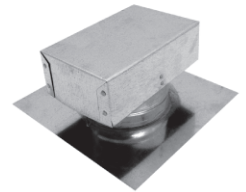
95
Vertical
Draft Vent



140
Adjustable
Roof Flashing



141
Tall Cone
Flashing



RJ
Roof Jack

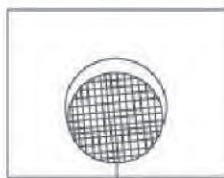
WALL CAP



36
Wall Cap



39
Wall Cap
with Damper



36AL
Aluminum Wall Cap

39AL
Aluminum Wall Cap
with Damper

Available with
and without 1/4" galvanized wire
birdscreen mesh
covering interior
tube opening.

Mesh covering opening



99
Chimney Cap



99A
Chimney Cap



99VC
Vent Cap



99LD
Lo-Draft Chimney Cap



390WP
White Louver
Hood with Tail
391WP
Face Only



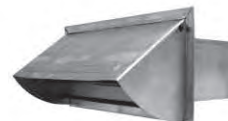
39GP
Gray Plastic Wall
Cap with Damper
39WP
White Plastic



ROOF CAP
Aluminum with
Damper and Screen
No. 239 Fits 4" round
No. 240 Up to 7" round
No. 241 Up to 10" round



SVH
Aluminum
Vent Hood
SVHBP
Brown Plastic
SVHWP
White Plastic



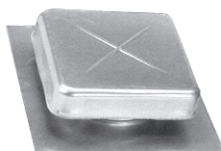
201VH
Aluminum
Wall Cap
201VHWP
White Plastic
Wall Cap



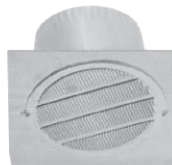
SAP
Aluminum
Snaplock Pipe



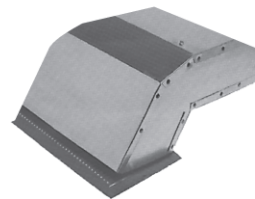
SAE
Aluminum
90° Elbow



RV51
Aluminum Roof
Cap with Screen
Up to 8" Round



EVI41
Eave Vent



220EC
Eave Vent
with Grille



SPC
Pipe Clamp



SH
Flexible White
Vinyl Hose



MF
Flexible
Aluminum
Duct

SAL
Aluminum
Transition
Duct



MOBILE HOME KITS

SWK

Single Wide Kit

- Includes:*
1 - Return Air Box
1 - Butterfly Damper
1 - Floor Grille
1 - Panel Filter

DWK

Double Wide Kit

- Includes:*
1 - Return Air Box
2 - Butterfly Dampers
1 - 78 Wye Branch
1 - Floor Grille
1 - Panel Filter



78
Wye Branch



Panel Filter



Floor Grille



Butterfly Damper



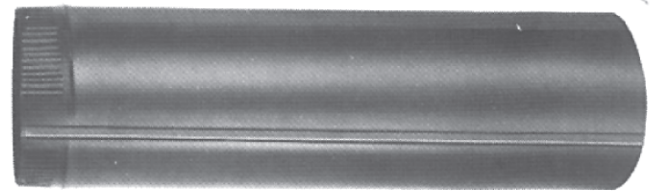
74
Return Air Box
Available as
6" Deep Box or
12" Deep Box

*Kit sizes available:
12x20-12 Round, 12x20-14 Oval,
and 14x20-14 Round.*

BLACK PIPE and FITTINGS

BLACK PIPE & FITTINGS:

- Available in 5", 6", 7", and 8" diameters
- 24 Gauge material, cold-rolled steel coils per ASTM A1008 CS-B (aiming 1/2 standard ASTM tolerances), skinpassed
- High heat black painted with Valspar WPA0053 (.35 mil each side)
- Heat and rust resistant
- Standard packaging



BP

Snaplock Pipe
Available in 12", 24", and 36" lengths



BP90
90° Adjustable Elbow



BP54
Tee



BP127
Oval to Round
Adapter



BPCHAD
Chimney
Adapter



BP55
End Cap



BP96
Drawband



BPTC
Trim Collar



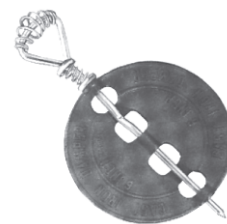
BPC
Pipe Collar



BP58
3 pc Reducer



BPCON
Connector



CID
Cast Iron Damper



SP10
Spiral Pipe

Featuring:

- 10 ft lengths
- Available in 4" - 24" diameters
- RL-I spiral lock seam
- Available in 26Ga and 24Ga

SPIRAL PIPE & FITTINGS:

- 26 Ga and 24 Ga galvanized steel
- Also available in galvanized steel by request
- Low pressure fittings (+/- 4" w.g. pressure rating)
- Riveted connection
- Outside dimensions of each end diameter is approximately 1/8" under nominal size



SP54
Tee Joint



SP55
End Cap



SP45
45° Angle



SP90
90° Adjustable
Elbow



SP90LR
Long Radius
90° Elbow



SP58
Tapered Reducer



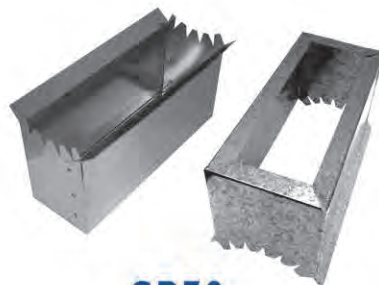
SP58ER
Eccentric Reducer



SP6
90° Shoe Tap



SPCON
Connector



SP70
Register Saddle

Diameter	Bend Radius
4"	3"
5"	3¾"
6"	4½"
7"	5¼"
8"	6"
10"	7½"
12"	9"
14"	10½"
16"	12"
18"	13½"
20"	15"
22"	16½"
24"	18"

Diameter	Bend Radius
4"	6"
5"	7½"
6"	9"
7"	10½"
8"	12"
10"	15"
12"	18"
14"	21"
16"	24"
18"	27"
20"	30"
22"	33"
24"	36"

PRODUCT INDEX

Item No.	Product Name	Page	Item No.	Product Name	Page
3	Fiberglass Extension	4	49C	Adjustable Plenum (Complete)	4
4	Plenum Chamber	4	49P	Adjustable Plenum Panel	4
5	Duct Hanger	4	49T	Adjustable Plenum Top	4
6S	S-Cleat	4	50	Wye - 15" Long	12
8D	Drive Cleat	4	51	Wye - 24" Long	12
13	Flat Trunk 45° Angle	3	51CRD	Straight CRD Boot	13
14	Flat Trunk 90° Elbow	3	51F	Straight Ceiling Box	13
14TT	Trunk Tee	4	51FCRD	Straight CRD Boot w/ Flange	13
15	Vertical Trunk 45° Angle	3	51P	Straight Ceiling Box w/ Plate	13
16	Vertical Trunk 90° Elbow	3	52	Flue Wye	12
17	Trunk Transition	3	53	Tee - 24" Long	12
17C	Trunk Transition (center)	3	54	Tee - 15" Long	12
17CR	Adjustable Register Boot	2	54SW	Swivel Tee	12
17TT	Trunk Tee	4	55	Tee Cap	12
18	Connector- Plenum to Trunk	4	58	3-pc Reducer	12
19RC	Register Collar	14	58CRD	End CRD Boot	13
20	Trunk Straight Collar	3	58FCRD	End CRD Boot w/ Flange	13
21	Trunk End Cap	3	58WF	Diffuser Outlet w/ Flange	14
23	Trunk Offset Collar	3	59CRD	90° CRD Boot	13
23AT	Trunk Transition Collar	3	59F	90° Ceiling Box	13
24	90° Stack Boot	7	59FCRD	90° CRD Boot w/ Flange	13
24R	90° Register Boot	2	59P	90° Ceiling Box w/ Plate	13
26	Angle Stack Boot	7	62	Top Takeoff (Metal)	9
26R	45° Register Boot	2	62FG	Top Takeoff (Ductboard)	9
27	Straight Stack Boot	7	63	Side Takeoff (Metal)	9
27R	Straight Register Boot	2	63A	Adjustable Takeoff (Metal)	9
28	End Stack Boot	7	63AFG	Adjustable Takeoff (Ductboard)	9
28R	End Register Boot	2	63FC	Ceiling Collar	15
29RO	Offset Register Boot	2	63FG	Side Takeoff (Ductboard)	9
31	Return Air Frame	5	64	Double Top Takeoff (Metal)	10
31PF	Plaster Frame	13	64FR	Flue Reducer	12
34PLF	Adj. Takeoff Fiberglass	9	66WF	Ceiling Diffuser Outlet	14
35	Trunk Reducer	5	70	Register Takeoff	14
35A	Trunk Reducer	5	71	Register Tee	14
36	Fresh Air Intake	15	72	Diffuser Tee	14
37	Rigid S-Cleat	4	72WF	Diffuser Tee w/ Flange	14
39	Galvanized Vent Hood	15	73	Square Diffuser Box	14
39AL	Alum Wall Cap w/Damper	15	73C	Sq to Rd Transition Outlet	14
39GP	Gray Plastic Wall Cap	16	74	Register Cap	14
39WP	White Plastic Wall Cap	16	74	Return Air Box	16
40	Damper Section	15	75	Register Box - 7" Deep	14
42	Trunk Volume Damper	3	77	Sq to Rd Diffuser Box	14
44	Round Damper	15	77S	Sq to Rd Diff. Box, Side Outlet	14
44-I	One Quad Damper	15	77WF	Diffuser Funnel w/ Flange	14
44S	Rd Damper- Fixed Hardware	15	78	Wye Branch	12
45	45° Adjustable Angle	2	78-1	One Way Adjustable Wye	12
47	Connector- Furnace to Plenum	4	78-2	Two Way Adjustable Wye	12
48	Panning Material	5	81	Ceiling Outlet	14
			81D	Ceiling Outlet w/ Damper	14
			83	Insul. Ceiling Box, Top Outlet	13
			83E	Insul. Ceiling Box, End Outlet	13
			83PC	Branch Connector	15
			83S	Insul. Ceiling Box, Side Outlet	13
			83TF	Insul. Ceiling Box, Top Flange	13
			84DB	Insul. Ceiling Box (Ductboard)	13
			84ST	Ductboard Collar	8
			84STWD	Ductboard Collar w/ Damper	8
			85	Insul. Ceiling Box, Top Outlet	13
			85A	Insul. Ceiling Box, Angle	13
			85DB	Insul. Ceiling Box (Ductboard)	13
			85S	Insul. Ceiling Box, Side Outlet	13
			86	Insul. Ceiling Box, Slant Top	13
			86SC	Sleeve Connector	15
			87	Lever Takeoff (Metal)	10
			90	90° Adjustable Elbow	2
			90	Floor Register Box - 6" Deep	14
			91	Floor Register Box - 10" Deep	14
			92	Funnel Register Box	14
			92B	Funnel Register Box (B-Style)	14
			93	Elbow Draft Vent	15
			94	Horizontal Draft Vent	15
			95	Vertical Draft Vent	15
			96	Drawband	15
			97	Flat Collar	8
			97FC	Flex Connector	15
			97FG	Spin Collar (Ductboard)	8
			97FGWD	Spin Collar (DB) w/ Damper	8
			97LS	Long Collar	8
			97LSWD	Long Collar w/ Damper	8
			98	Spin Collar (DB) w/ Scoop	8
			98WD	Spin Collar (DB) w/ Scoop/ Damp.	8
			99	Chimney Cap	15
			99A	Chimney Cap	15
			99LD	Lo-Draft Chimney Cap	15
			99VC	Vent Cap	15
			100	Oval Pipe - 100"	6
			106	Rd to Oval Reverse Boot	6
			110	Oval Stackhead	6
			111	Register Outlet	6
			113	Flat Oval 45° Angle	6
			114	Flat Oval 90° Elbow	6
			115	Vertical Oval 45° Angle	6
			116	Vertical Oval 90° Elbow	6
			117	Flue Thimble	12
			120SC	Snap Collar	8
			121SC	Snap Collar (Ductboard)	8
			122SC	Snap Collar (Ductboard)	8
			124	Rd to Oval 90° Boot	6
			124R	Oval 90° Register Boot	8
			127	Rd to Oval Straight Boot	6
			127R	Oval Straight Register Boot	6
			128	Oval to Oval Reverse Boot	6

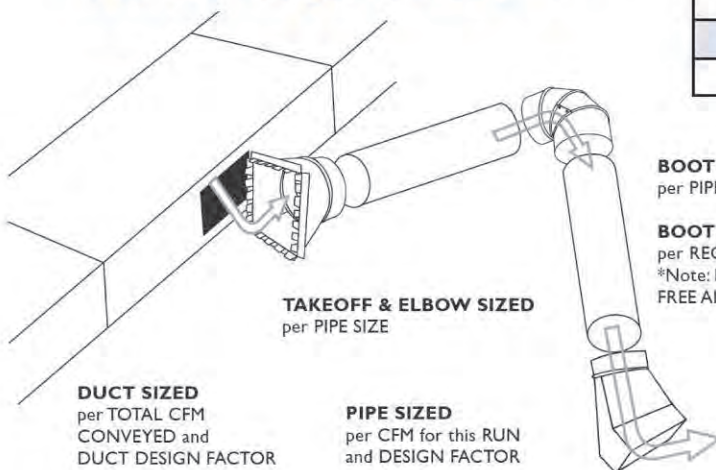
PRODUCT INDEX

Item No.	Product Name	Page	Item No.	Product Name	Page	Item No.	Product Name	Page
I28R	Oval End Register Boot	6	I050	Collar, No Crimp	8	PH5	90° Basement Boot	2
I32	"A" Adapter	6	I051	Collar	8	PHEXT	PH Extension	7
I33	"B" Adapter	6	I060	Free Flow Tee	12	RV5 I	Alum Roof Cap - 8" Opening	16
I33	Line Cover	7	I106	Cold Air Frame	4	S5	Pivot Takeoff (Metal)	10
I34	Can Stock	7	I109	Transition Collar	3	S75	Snap Drawband	15
I35	Rigid S-Cleat (1" Leg)	4	I112	Plenum Corner	4	SAE	Aluminum Elbow	16
I37	Drain Pan	5	I149	Long Collar w/ Damper	8	SAL	Aluminum Transition Duct	16
I40	Adjustable Roof Flashing	15	I150	Long Collar	8	SAP	Aluminum Pipe	16
I41	Tall Cone Flashing	15	2015	Rd Takeoff Elbow (Ductboard)	10	SB	Support Box	5
I42	Storm Collar	15	2016	Adjustable Takeoff (Ductboard)	9	SBF	Support Box w/ Filter Rack	5
I50	Oval Stackhead w/ Collar	15	2022	Round Takeoff (Ductboard)	10	SH	White Flexible Vinyl Hose	16
I56	Spin Collar	15	AT62	AirTite Top Takeoff	11	SL	Snaplock Pipe	2
I56BM	Bellmouth Spin Collar	6	AT62WD	AirTite Top Takeoff w/ Damper	11	SP6	Spiral 90° Shoe Tap	18
I56D	Spin Collar w/ Damp	8	AT63	Rectangular AirTite Takeoff	11	SPI0	Spiral Pipe	18
I56SDBM	Bm. Spin Collar w/Scoop/Damp	8	AT63A	Adjustable AirTite Takeoff	11	SP45	Spiral 45° Angle	18
I56DBM	Bellmouth Spin Collar w/ Damp	8	AT63WD	Rect. AirTite Takeoff w/ Damp	11	SP54	Spiral Tee	18
I56S	Spin Collar w/Scoop	8	ATD	AirTite Takeoff w/ Damper	11	SP55	Spiral End Cap	18
I56SD	Spin Collar w/Scoop/Damper	8	ATDBM	Bellmouth AT Takeoff w/ Damp	11	SP58	Spiral Tapered Reducer	18
I56SDBM	Bm. Spin Collar w/Scoop/Damp	8	ATDRP	Rd Pipe AT Takeoff w/ Damper	11	SP58ER	Spiral Eccentric Reducer	18
I60	Oval Pipe - 60"	8	ATHE	High Efficiency AirTite Takeoff	11	SP70	Spiral Register Saddle	18
I62	Oval Top Takeoff	8	ATHEWD	High Eff AT Takeoff w/Damper	11	SP90	Spiral 90° Elbow	18
I63	Oval Side Takeoff	6	ATS	AirTite Takeoff w/ Scoop	11	SP90LR	Spiral Long Radius 90° Elbow	18
I70	Return Air Pan	6	ATSD	AirTite Takeoff w/ Scoop/Damp	11	SPC	Pipe Clamp	16
I77	Ceiling Outlet	6	ATSRP	Rd Pipe AT Takeoff w/ Scoop	11	SVH	Aluminum Vent Hood	16
I77S	Ceiling Side Outlet	5	ATSDRP	Rd Pipe AT T/O w/Scoop/Damp	11	SVHBP	Brown Plastic Vent Hood	16
I99	H-Vent	14	ATT	AirTite Takeoff	11	SVHWP	White Plastic Vent Hood	16
200	Trunk Tee	12	ATTBM	Bellmouth AirTite Takeoff	11	SWK	Single Wide Mobile Home Kit	16
201	Straight Thru Tee	12	ATTRP	Round Pipe Takeoff	11	TD	Trunk Duct	3
201VH	Aluminum Wall Vent	12	ATTRP45	45° Saddle AirTite Takeoff	11	WSJ	Wallstack	7
201VHWP	White Plastic Vent	12	ATTRP90	90° Saddle AirTite Takeoff	11	WS7C	Center Reverse Stack Elbow	7
202	Reducing Tee	16	BP24	Black Pipe - 24"	17	WS9	Double Stackhead	7
203S	Stub Wye	12	BP54	Black Tee	17	WS10	Stackhead	7
207	90° Vent Saddle	12	BP55	Black End Cap	17	WS10X	Long Throat SH w/ Ears	7
207QT	Quick Tee 90°	12	BP58	Black 3-pc Reducer	17	WS11	Projection Stackhead	7
208	45° Vent Saddle	12	BP90	Black 90° Elbow	17	WS12	Horizontal Stackhead	7
208QT	Quick Wye 45°	12	BP96	Black Drawband	17	WS13	Flat Stack 45° Angle	7
220EC	Eave Vent	12	BPI27	Black Oval to Rd Adapter	17	WS14	Flat Stack 90° Elbow	7
239	Alum Roof Cap w/ Damper	12	BPC	Black Pipe Collar	17	WS15	Vertical Stack 45° Angle	7
240	Alum Roof Cap w/ Damper	16	BPCHAD	Black Chimney Adapter	17	WS16	Vertical Stack 90° Elbow	7
241	Alum Roof Cap w/ Damper	16	BPCON	Black Connector	17	WS17	Stack Transition	7
277	Ceiling Outlet, No Flange	14	BPTC	Black Trim Collar	17	WS20	Straight Stack Collar	7
277F	Sq to Rd Outlet w/ Flange	14	CID	Cast Iron Damper	17	WS21	Stack End Cap	7
355	Oval Straight Register Box	6	DWK	Double Wide Mobile Home Kit	16	WS45	Stack Damper	7
360	Oval Angle Register Box	6	EPI5	Full Tab Takeoff (Metal)	10	WS60	Stack Top Takeoff	7
390WP	White Louver Hood w/ Tail	16	EVI41	Eave Vent	16	WS61	Stack Side Takeoff	7
391WP	White Louver Hood	16	FB	Furnace Box	5			
577	Insulated Wye	13	FR	Filter Rack	4			
577P	Insulated Wye Panel	13	HT15	Half Tab Takeoff (Metal)	10			
582	2-pc Reducer	12	MF	Aluminum Flexible Duct	16			
810-817	Return Air Package	5	MUI20	Conductor Pipe	2			
810B-817B	Cold Air Boot	5	MR	Mounting Rails	13			

TECHNICAL INFORMATION

EQUIVALENT LENGTHS		
PLENUM/DUCT FITTINGS		
No. 23	Offset starting collar	10' EL
No. 20	Straight starting collar	35' EL
No. 120SC	Snap collar, round	35' EL
ROUND ELBOWS & ANGLES		
	90° elbows	30' EL
	45° angles	10 - 20' EL
REGISTER BOOTS		
No. 24R	90° register boot	30' EL
No. 27R	Straight register boot	5' EL
No. 28R	End register boot	50' EL
ROUND FITTINGS (TAKEOFFS)		
No. 97	Round starting collar	35' EL
No. 63	Square to round straight	20' EL
No. 63A	Square to round adj. side takeoff	50' EL
No. 62	Square to round top takeoff	50' EL
No. 55	Round to round (adjustable)	50' EL
No. 65	Round to round	50' EL
DUCT ELBOWS, RADIUS THROAT		
No. 14	Up to 11"	10' EL
	12" to 21"	15' EL
	22" to 27"	20' EL
	28" to 33"	25' EL
DUCT ELBOWS, SQUARE THROAT		
No. 16S	Up to 11"	40' EL
	12" to 15"	55' EL
	16" to 21"	75' EL
	22" to 27"	100' EL
	28" to 33"	125' EL
RETURN AIR SYSTEM		
No. 810	Cold air boot, collar, duct	45- 65' EL

SIZING REQUIREMENTS



$$\frac{\text{ASP} \times 100}{\text{TOTAL EQ. LENGTH}}$$

SMACNA Gauge Requirements for Galvanized Steel

Duct Diameter	2" w.g. max Positive Pressure	Duct Diameter	2" w.g. max Negative Pressure
3" - 8"	28 Ga	6" - 10"	28 Ga
9" - 14"	26 Ga	12"	26 Ga
15" - 26"	24 Ga	14" - 16"	24 Ga
		18" - 20"	22 Ga
		22" - 26"	20 Ga

From SMACNA HVAC Duct Construction Standards Metal and Flexible, 2nd Ed (1995); 3.3 & 3.8

SUPPLY OR RETURN DUCT SIZE/CAPACITY (.09 to .10 pressure drop per 100' EL)

CFM	Round (No. SL)	Rectangular (TD)		
50	5"	8 x 6		
75	5"	8 x 6		
100	6"	8 x 6	3½ x 10	(110)
125	6"	8 x 6	3½ x 12	(140)
150	7"	8 x 6	3½ x 14	(160)
175	7"	8 x 6		
200	7"	8 x 6		
250	8"	6 x 10	8 x 8	6 x 12
300	9"	6 x 10	8 x 8	6 x 12
350	9"	6 x 10	8 x 8	6 x 12
400	9"	8 x 10	8 x 8	6 x 12
500	10"	10 x 10	12 x 8	8 x 12
600	12"	10 x 10	12 x 8	8 x 12
700	12"	12 x 10	14 x 8	10 x 12
800	12"	12 x 10	16 x 8	10 x 12
900	14"	14 x 10	18 x 8	12 x 12
1,000	14"	14 x 10	18 x 8	12 x 12
1,200	14"	16 x 10	24 x 8	14 x 12
1,400	16"	18 x 10	24 x 8	16 x 12
1,600	16"	20 x 10	28 x 8	18 x 12
1,800	16"	24 x 10	30 x 8	20 x 12
2,000	18"	26 x 10	32 x 8	20 x 12
2,500	18"	30 x 10	20 x 14	24 x 12
3,000	20"	36 x 10	24 x 14	28 x 12
3,500	22"	40 x 10	28 x 14	32 x 12
4,000	24"	26 x 16	32 x 14	38 x 12

8" Joist - 375 CFM; 10" Joist - 525 CFM (return only)

BOOT COLLAR SIZED
per PIPE SIZE

BOOT OPENING SIZED
per REGISTER SIZE*
*Note: Boot sized LARGER than
FREE AIR OPENING of register

REGISTER SIZED
per STYLE, SPREAD THROW
and FREE AREA of register and
CFM requirement

ADJUSTMENT OF DUCT DESIGN PRESSURE (RATE) FOR EQUIVALENT LENGTHS

Total Effective Length (Feet)	.05	.06	.08	.10	.125	.14	.16	.18	.20	.25	.30	.34	.375	.40	.50	.625	.75	1.00
35 - 44	.13	.15	.20	.25	.32	.35	.40	.45	.50	.63	.75	.85	.95	1.00	1.25	1.50	1.90	2.54
45 - 54	.10	.12	.16	.20	.25	.28	.32	.36	.40	.50	.60	.68	.76	.80	1.00	1.26	1.52	2.02
55 - 64	.08	.10	.13	.17	.21	.23	.27	.30	.33	.42	.50	.57	.63	.67	.83	1.05	1.26	1.68
65 - 74	.07	.09	.11	.14	.18	.20	.23	.26	.29	.36	.43	.49	.54	.57	.72	.90	1.08	1.44
75 - 84	.06	.08	.10	.13	.16	.18	.20	.23	.25	.31	.38	.43	.47	.50	.63	.79	.94	1.26
85 - 94	.06	.07	.09	.11	.14	.16	.18	.20	.22	.28	.33	.38	.42	.45	.56	.70	.84	1.12
95 - 104	.05	.06	.08	.10	.13	.14	.16	.18	.20	.25	.30	.33	.38	.40	.50	.63	.75	1.01
105 - 114	.05	.05	.07	.09	.11	.13	.15	.16	.18	.23	.28	.31	.34	.37	.47	.57	.69	.91
115 - 129	.04	.05	.07	.08	.10	.12	.13	.15	.17	.21	.25	.28	.31	.33	.46	.51	.62	.82
130 - 149	.04	.04	.06	.07	.09	.10	.11	.13	.14	.18	.21	.24	.27	.29	.36	.45	.54	.72
150 - 169	.03	.04	.05	.06	.08	.09	.10	.11	.13	.16	.19	.21	.24	.25	.31	.39	.47	.63
170 - 189	.03	.03	.04	.06	.07	.08	.09	.10	.11	.14	.17	.19	.21	.22	.28	.35	.42	.56
190 - 214	.03	.03	.04	.05	.06	.07	.08	.09	.10	.13	.15	.17	.19	.20	.25	.31	.37	.50
215 - 239	.02	.03	.04	.05	.05	.06	.07	.08	.09	.11	.13	.15	.17	.18	.22	.28	.33	.44
240 - 264	.02	.02	.03	.04	.05	.06	.06	.07	.08	.10	.12	.14	.15	.16	.20	.25	.30	.40
265 - 289	.02	.02	.03	.04	.04	.05	.06	.07	.07	.09	.11	.12	.14	.15	.18	.23	.27	.36
290 - 324	.02	.02	.03	.03	.04	.05	.05	.06	.07	.08	.10	.11	.12	.13	.17	.20	.24	.33
325 - 374	.02	.02	.02	.03	.04	.04	.05	.05	.06	.07	.09	.10	.11	.11	.14	.18	.21	.29
375 - 424	.01	.02	.02	.03	.03	.04	.04	.05	.05	.06	.08	.09	.09	.10	.13	.16	.19	.25
425 - 474	.01	.01	.02	.03	.03	.03	.04	.04	.05	.06	.07	.08	.08	.09	.11	.14	.17	.22
475 - 524	.01	.01	.02	.02	.03	.03	.03	.04	.04	.05	.06	.07	.08	.08	.10	.13	.15	.20
525 - 574	.01	.01	.02	.02	.02	.03	.03	.03	.04	.05	.06	.07	.07	.07	.09	.11	.14	.18
575 - 625	.01	.01	.01	.02	.02	.02	.03	.03	.03	.04	.05	.06	.06	.07	.08	.10	.13	.17

FORMULAS

Sensible Heat Formula

$$\text{BTU/Hour} = \text{CFM} \times \text{TD} \times \text{I.I}$$

$$\text{CFM} = \frac{\text{BTU/Hour}}{\text{I.I} \times \text{TD} \times \text{ACF}}$$

I.I is a conversion factor

TD is the Temperature Difference created by the appliance

ACF is the Altitude Correction Factor (see above table)

Altitude Correction Factor (ACF)			
0 ft	1.0	5000 ft	.826
500 ft	.981	6000 ft	.801
1000 ft	.962	7000 ft	.772
2000 ft	.926	8000 ft	.749
3000 ft	.891	9000 ft	.715
4000 ft	.858	10000 ft	.687

$$\text{Sensible Heat Ratio} = \frac{\text{Sensible Load}}{\text{Sensible Load} + \text{Latent Load}}$$

SHR below .80 = 21° TD High humidity = 350 CFM/ton
 SHR .80 to .85 = 19° TD Ave. humidity = 400 CFM/ton
 SHR above .85 = 17° TD Low humidity = 450 CFM/ton

$$\text{CFM} = \frac{\text{Sensible Load}}{\text{I.I} \times \text{TD} \times \text{ACF}}$$

Total Heat Equation

$$\text{CFM} = \frac{\text{BTU/Hr}}{4.5 \times \text{H} \times \text{ACF}}$$

4.5 is a conversion factor
 H is the BTU per lb. of air removed

Friction Rate

*used in duct calculators

$$\text{Friction Rate} = \frac{\text{Pressure Drop} \times 100}{\text{TEL}}$$

Pressure Drop is the available static pressure (ASP) allocated to the duct work.

ASP = Blower Static Pressure - Component Pressure Drops

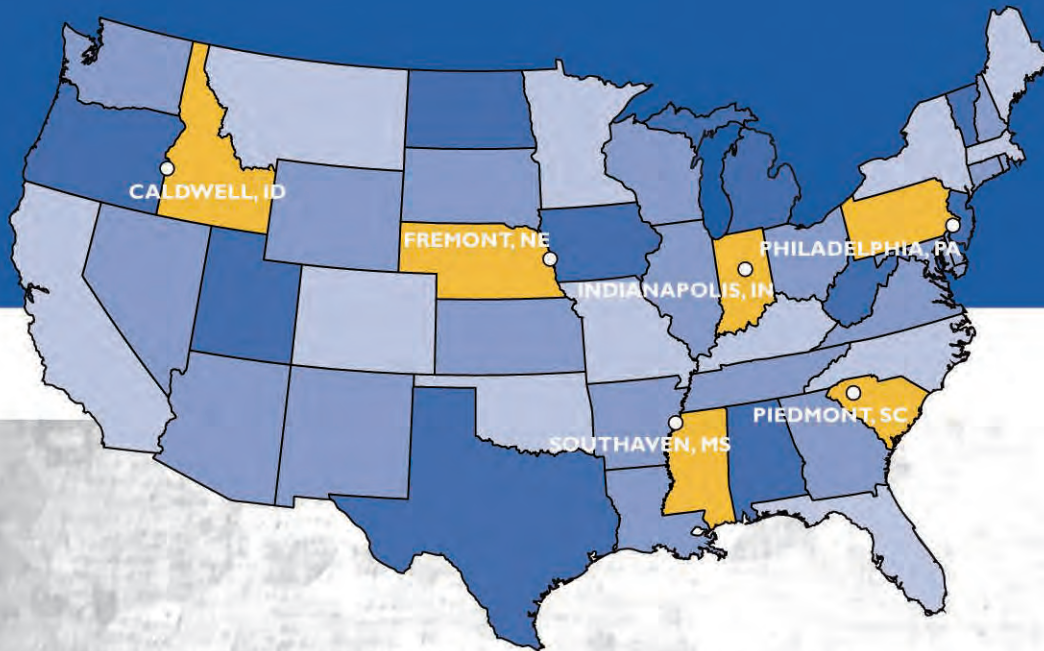
TEL is the Total Effective Length of the longest supply run and the longest return run.

CFM Calculations

$$\text{Room CFM} = \frac{\text{Blower CFM} \times \text{Room Load}}{\text{Equipment Sizing Load}}$$

$$\text{Flow Factor} = \frac{\text{Blower CFM}}{\text{Equipment Sizing Load}}$$

$$\text{Room CFM} = \text{Flow Factor} \times \text{Room Load}$$



OUR LOCATIONS

PHILADELPHIA DIVISION

2800 Red Lion Road
Philadelphia, PA 19114
(800) 523-1052 • fax (800) 722-2076

STATES COVERED:
Pennsylvania, New Jersey, New York, Connecticut, Rhode Island, Massachusetts, Delaware, Vermont, New Hampshire, Maine, Maryland, and Virginia

GREENVILLE DIVISION

255 Bessie Road - Highway 86
Piedmont, SC 29673
(800) 229-2803 • fax (864) 845-6190

STATES COVERED:
South Carolina, North Carolina, Virginia, Georgia, Florida, Alabama, and Tennessee

INDIANAPOLIS DIVISION

10401 East 59th Street
Indianapolis, IN 46236
(800) 490-7707 • fax (317) 823-1006

STATES COVERED:
Indiana, Ohio, Michigan, Kentucky, West Virginia, Illinois, Wisconsin, Missouri, and Iowa

MISSISSIPPI DIVISION

8680 Stanton Road
Southaven, MS 38671
(800) 541-6706 • fax (662) 393-8005

STATES COVERED:
Mississippi, Louisiana, Alabama, Arkansas, Tennessee, Missouri, Oklahoma, Kentucky, and Texas

NEBRASKA DIVISION

2073 North Rademakers Way
Fremont, NE 68025
(800) 801-0336 • fax (402) 753-9008

STATES COVERED:
Nebraska, Missouri, Kansas, North Dakota, South Dakota, Colorado, Minnesota, Wyoming, and Iowa

IDAHO DIVISION

4002 Skyway Street
Caldwell, ID 83605
(866) 289-9908 • fax (208) 402-2126

STATES COVERED:
Idaho, Montana, Nevada, Oregon, Utah, Washington, Wyoming, California, and Alaska

www.southwarkmetal.com