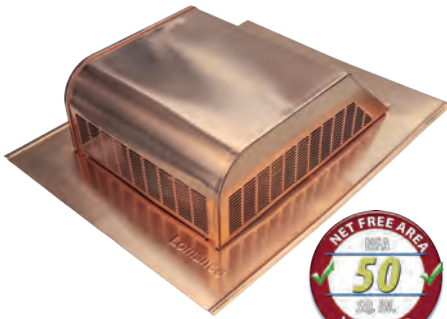


### Copper 750



- ▶ Three sides louvered for greater air flow.
- ▶ Large nailing flange.
- ▶ All-copper construction.
- ▶ Fits all pitched roofs.
- ▶ Weather-tight seamed collar.
- ▶ High profile for increased weather protection and circulation.
- ▶ Prevents roof discoloration.
- ▶ Bird-proof.

Model	Overall Size (in.)	Opening Size (in.)	Net Free Area (in. <sup>2</sup> )
750	16 x 20 <sup>3</sup> / <sub>16</sub> x 5	8	50

### Copper 2000



- ▶ Deep drawn flange and unique rain shield keep water out.
- ▶ Factory-set adjustable thermostat (switches on at 100 degrees and off at 85 degrees).
- ▶ Optional adjustable humidistat settings are: minimum 80%, normal 42%, and maximum 20%.
- ▶ 8x8 aluminum screen attached for insect protection.
- ▶ Lomancool 2000TH model equipped with thermostat/humidistat combo switch.
- ▶ 5 Year limited warranty.

Model	Amps	Motor		Volts	Base (in.)	Fan Blades	
		HP	RPM			No.	DIA. (in.)
2000	3.4	1/10	1100	120	20 x 23	5	12
2000TH	3.4	1/10	1100	120	20 x 23	5	12

### Copper VUR

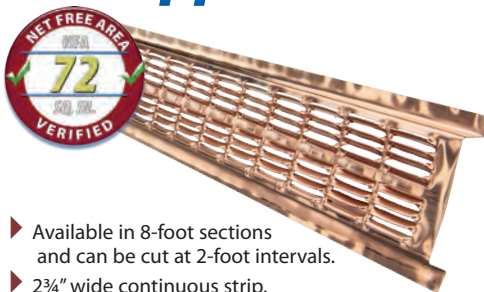


- ▶ One-piece construction.
- ▶ Easy installation, male/female connections—no straps necessary.
- ▶ Engineered weather infiltration protectors at each connection.
- ▶ Pre-punched nail holes.
- ▶ Exterior wind baffles.
- ▶ Adjusts from 3/12 to 8/12 pitches.
- ▶ 18" Net Free Area per Linear Foot.
- ▶ Tight-fitting high-density polyethylene foam end plug available.

Model	Section LTH.	Net Free Area (in. <sup>2</sup> )
VUR-10	10	180
V-Plug	—	—

## Intake Vents

### Copper 105



- ▶ Available in 8-foot sections and can be cut at 2-foot intervals.
- ▶ 2<sup>3</sup>/<sub>4</sub>" wide continuous strip.
- ▶ 1" x 1<sup>1</sup>/<sub>8</sub>" louvered openings.
- ▶ Mounting flange is recessed <sup>3</sup>/<sub>8</sub>" for soffit board.

Model	LTH.(ft.)	WTH.(in.)	NFA (in. <sup>2</sup> )
105	8	2 <sup>3</sup> / <sub>4</sub>	72

### Copper CV-4

- ▶ 18x16 copper screen attached.
- ▶ Unique "eyebrow" designed louvers provide maximum ventilating capacity with superior weather protection.
- ▶ Prevents paint peeling by removing moisture from wall cavities.
- ▶ Provides an outlet for air movement in small confined spaces.
- ▶ Easy installation (drill and pop in).



Model Number	Overall Size (in.)	Hole Size (in.)	Net Free Area
CV-4	4 <sup>1</sup> / <sub>2</sub>	4	3

### Copper SV-10



- ▶ Offers two products in one: incorporates both drip edge vent and continuous soffit vent.
- ▶ Perfect for homes built with little or no overhang.
- ▶ Can be cut to desired length.

Model	LTH.(ft.)	WTH.(in.)	NFA (in. <sup>2</sup> )
SV-10	10	—	63

Copper has been adding a beautiful architectural element to buildings throughout the world for centuries. Our selection of **Copper Roof Vents** are constructed with beauty and functionality to compliment any home.

Want more info?  
Scan the QR code  
to access additional  
information on  
lomanco.com.

