

Reducers

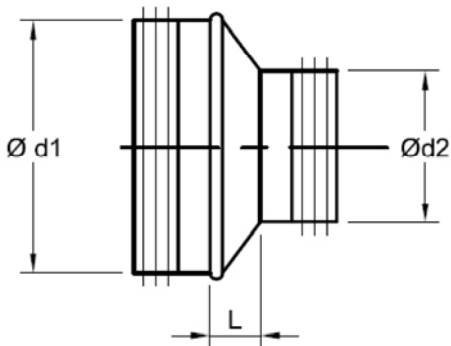


Description

- die stamped concentric reducers
- sizes greater than 14" will not be stamped

Ordering Example

Gasketed, G-3	Type	$\frac{\varnothing d_1}{aa}$	$\frac{\varnothing d_2}{bb}$
	RCG	aa	bb
Nongasketed, G-0	Type	$\frac{\varnothing d_1}{aa}$	$\frac{\varnothing d_2}{bb}$
	RC	aa	bb



RCG/RCFG



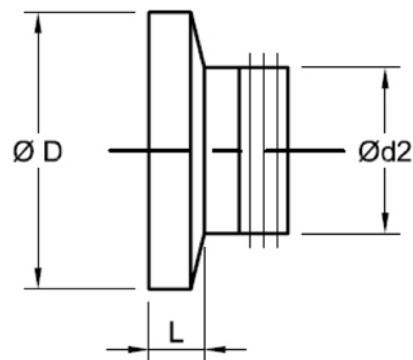
13

Description

- die stamped concentric reducers
- $\varnothing D$ = duct size slips over fitting ends
- sizes greater than 14" will not be stamped

Ordering Example

Gasketed, G-3	Type	$\frac{\varnothing D}{aa}$	$\frac{\varnothing d_2}{bb}$
	RCFG	aa	bb
Nongasketed, G-0	Type	$\frac{\varnothing D}{aa}$	$\frac{\varnothing d_2}{bb}$
	RCF	aa	bb



Reducers

RCG/RCFG

14

$\varnothing d_1$ (in)	$\varnothing d_2$ (in)	L_1 (in)	L_2 (in)
4	3	$\frac{3}{4}$	$2\frac{3}{8}$
5	3	1	$2\frac{5}{8}$
5	4	$\frac{7}{8}$	$2\frac{3}{8}$
6	3	$1\frac{3}{4}$	$3\frac{3}{8}$
6	4	$1\frac{1}{4}$	$2\frac{7}{8}$
6	5	$\frac{3}{4}$	$2\frac{3}{8}$
7	4	2	$3\frac{1}{2}$
7	5	$1\frac{1}{2}$	3
7	6	1	$2\frac{1}{2}$
8	4	$2\frac{1}{4}$	$3\frac{3}{4}$
8	5	$1\frac{5}{8}$	$3\frac{1}{4}$
8	6	$1\frac{1}{4}$	$2\frac{7}{8}$
8	7	$\frac{3}{4}$	$2\frac{3}{8}$
9	6	$1\frac{5}{8}$	$3\frac{1}{4}$
9	7	$2\frac{1}{8}$	$3\frac{3}{4}$
9	8	$1\frac{1}{8}$	$2\frac{3}{4}$
10	5	$2\frac{5}{8}$	$4\frac{1}{4}$
10	6	$2\frac{1}{4}$	$3\frac{7}{8}$
10	7	$1\frac{5}{8}$	$3\frac{1}{4}$
10	8	$1\frac{1}{8}$	$2\frac{3}{4}$
10	9	$\frac{5}{8}$	$2\frac{1}{4}$

$\varnothing d_1$ (in)	$\varnothing d_2$ (in)	L_1 (in)	L_2 (in)
12	8	$2\frac{1}{8}$	$3\frac{3}{4}$
12	9	$1\frac{5}{8}$	$3\frac{1}{4}$
12	10	$1\frac{1}{8}$	$2\frac{3}{4}$
14	8	$3\frac{3}{8}$	$5\frac{3}{4}$
14	10	$2\frac{3}{8}$	$4\frac{3}{4}$
14	12	$1\frac{3}{8}$	$3\frac{5}{8}$
16	8	$3\frac{7}{8}$	$6\frac{1}{4}$
16	10	$2\frac{7}{8}$	$5\frac{1}{4}$
16	12	$1\frac{7}{8}$	$4\frac{1}{4}$
16	14	$\frac{7}{8}$	$3\frac{1}{4}$
18	8	5	$8\frac{1}{8}$
18	10	4	$7\frac{1}{8}$
18	12	3	$6\frac{1}{8}$
18	14	2	$5\frac{1}{8}$
18	16	1	$4\frac{1}{8}$
20	8	6	$9\frac{1}{8}$
20	10	5	$8\frac{1}{8}$
20	12	4	$7\frac{1}{8}$
20	14	3	$6\frac{1}{8}$
20	16	2	$5\frac{1}{8}$
20	18	1	$4\frac{1}{8}$

