

# Taps

22



pressed



fabricated

## Description

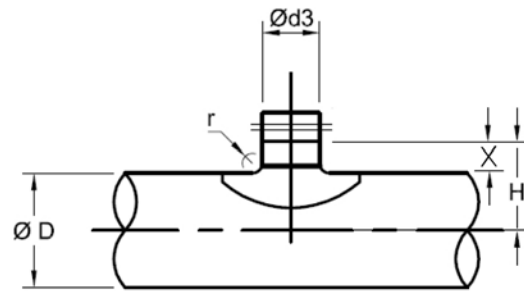
- saddle tap
- $H = X + 0.5(\varnothing D)$
- pressed:
  - radius entry
  - limited to galvanized steel only
- fabricated sizes listed to the right
  - $H = 1"$

## Ordering Example

Gasketed, G-3      Type       $\varnothing D$        $\varnothing d3$   
    PSG      aa      bb

Nongasketed, G-0      Type       $\varnothing D$        $\varnothing d3$   
    PS      aa      bb

# PSG



## Dimension

- Most  $\varnothing d3$  or tap diameters 3"-16" are pressed
- Exceptions are listed below:

Fabricated Sizes										
$\varnothing d3$	$\varnothing D$									
	8	9	10	12	14	16	18	20	22	24
3	•	•	•	•	•	•	•	•	•	•
7						•	•	•	•	•
12										
14						•	•	•	•	•
18										
20										
22										

- $H = X + 0.5(\varnothing D)$
- X = see chart below:

$\varnothing d3$ (in)	Pressed	Fab
(in)	X (in)	X (in)
3	$\frac{3}{8}$	1
4	$\frac{3}{4}$	1
5	$\frac{3}{4}$	1
6	1	1
7	1	1
8	1	1
9	1	1
10	1	1
12	$1\frac{1}{8}$	1
14	n/a	1
16	$\frac{3}{4}$	1
18	$\frac{7}{8}$	1
20	n/a	1
22	n/a	1
24	n/a	1