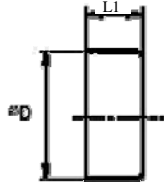


# End Caps

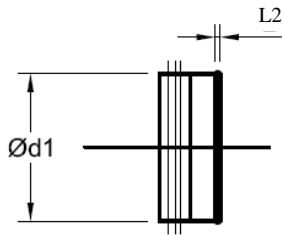


## Description

- EPF- end cap for fittings
- ESG- end cap for spiral duct

## Ordering Example

Nongasketed, G-0	Type	$\varnothing D_1$
	EPF	aa
Gasketed, G-3	Type	$\varnothing d_1$
	ESG	aa
Nongasketed, G-0	Type	$\varnothing d_1$
	ES	aa



# EPF/ESG

$\varnothing D_1$ (in)	L1 (in)	L2 (in)
3	1 5/8	3/8
4	1 5/8	3/8
5	1 5/8	3/8
6	1 5/8	3/8
7	1 5/8	3/8
8	1 5/8	3/8
9	1 5/8	3/8
10	2 3/8	3/8
12	2 3/8	3/8
14	2 3/8	3/8
16	3 1/8	3/8
18	3 1/8	3/8
20	3 1/8	3/8
22	3 1/8	1/2
24	3 1/8	1/2