

Elbows

6



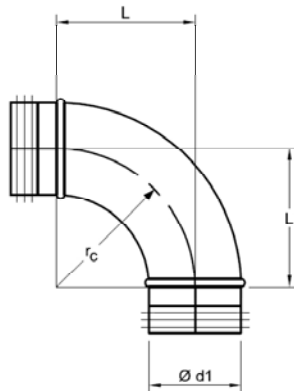
Description

- 90° die stamped elbow
- continuous stitch welded
- rolled edges
- galvanized steel only
- available in diameters 3"- 12"

Ordering Example

Gasketed, G-3	Type	$\frac{\varnothing d_1}{aa}$
	BSG 90	aa

Nongasketed, G-0	Type	$\frac{\varnothing d_1}{aa}$
	BS 90	aa



$r_c \approx 1.5 \times d_1$

BSG 90/BSFG 90



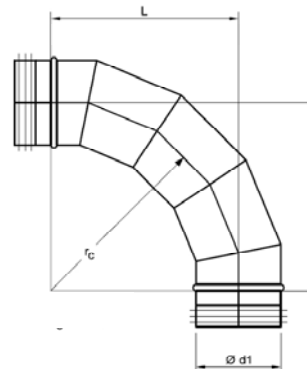
Description

- 90° elbow
- 5-piece gored, standing seam
- gore locked and internally sealed
- rolled edges

Ordering Example

Gasketed, G-3	Type	$\frac{\varnothing d_1}{aa}$
	BSFG 90	aa

Nongasketed, G-0	Type	$\frac{\varnothing d_1}{aa}$
	BSF 90	aa



$r_c \approx 1.5 \times d_1$