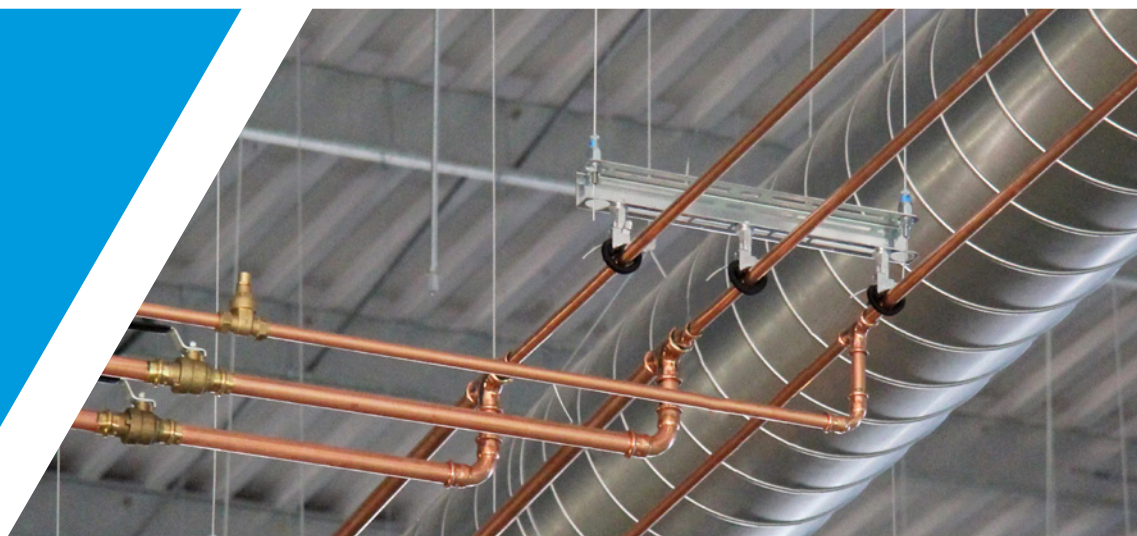




Product Guide

A complete guide to building services products





HEATING, VENTILATION, PLENUM BOXES, CHILLED BEAMS, OVAL, SPIRAL & RECTANGULAR DUCTWORK, COLD ROOMS, AIR CONDITIONING UNITS, MECHANICAL, PIPEWORK, CABLE LADDER BASKET & TRAY, STRIP LIGHTING, LUMINAIRE, TRUNKING, BUSBAR, CATENARIES, SHOPFITTING, SIGNAGE, ACOUSTIC BAFFLES, SUSPENDED CEILINGS, BRACING.

Contents

About

About Gripple page 4

Applications

Pipework page 8
 HVAC page 10
 Electrical page 12
 Lighting page 14
 Modules page 16
 Signage page 18
 Acoustics page 20
 Black Line page 22
 Sleeving page 24
 Other Applications page 26

Products

Standard Hanger page 30
 Express page 31
 Angel page 32
 Stainless Steel page 34
 Trapeze page 36
 Trapeze Plus page 37
 Trapeze & Cable Basket Adaptor page 38
 Duct Trapeze page 39
 Butterfly Trapeze page 40
 Y-Fit & Y-Fit Accessory page 42
 Catenary Kit & C-Clip page 44
 QT Universal Clamp page 46
 Universal Bracket page 47
 QT Compact Clamp page 48
 Low Profile Bracket page 49
 Universal Clamp page 50
 Pipe Insulation Collars page 52
 Thru-In-1 Sleeving System page 54

End fixings

Loop page 58
 Stud page 58
 Toggle page 59
 Snap Hook page 59

Mini Hook page 60
 End Stop page 60
 Barrel page 61
 Top Hat page 61
 Magnetic Pad page 62
 Eyelet page 62
 45° Eyelet page 63
 90° Eyelet page 63
 Cladding Hook page 64
 Ring Anchor page 64
 Ceiling Anchor page 65
 Link Hook page 65
 Karabiner page 66
 C-Clip page 66
 Shot Fire page 67
 Channel Nut page 67
 Decking Wedge page 68
 Alphawedge page 68
 Multiwedge 2 page 69
 TR60 Wedge page 69
 MF Wedge page 70
 Twist Clip (White) page 70
 Metal Deck Insert page 71
 Spider page 71

Accessories

Anchoring Solutions page 74
 Beams & Purlins page 76
 Brackets & Attachments page 77
 Adaptors page 78
 Trapeze Accessories page 80
 Tools & Finishing Accessories page 80

Technical

Technical Services page 84
 Hanging at Angles page 88
 Wire Rope Construction & Cross Sections page 88
 Nominal Ductwork Weights page 89
 Pipe Support Spacing page 90
 Key Recommendations page 91

About Gripple

Of the 500 strong Gripple team working worldwide, 22 people are dedicated to servicing the UK and Ireland. All are experts in suspension solutions for HVAC, M&E, modules, lighting, acoustics and signage. Our facilities in Sheffield enable us to offer a flexible, reactive service to find a solution to your problem, and deliver it quickly.



“...the company’s capabilities are now recognised, admired and trusted worldwide.”

From contractors to consultants, we offer:

- Suspension System Installation Design Service – we’ll advise on what you need and where
- BIM solutions
- Environmental Impact Studies
- CAD drawings
- On-site visits to assess installations and discuss potential solutions
- Product training – for specific installations or for the latest new products
- CPD presentations
- Regular on-site advice until job completion
- Next day delivery service to site



What we do

Time Savings

Save up to 85% on installation times when you choose to use one of Gripple’s wire rope kits, when compared to traditional methods. Not only is the installation faster, no pre-work, such as cutting or filing is required.

Health & Safety

Gripple wire rope kits are ready-to-use straight from the box, removing the need for potentially hazardous hot works and cutting on site. One box of Standard No.2 kits weighs just 8 kg, doing the same job as 150 kg of threaded rod and channel. Not only is the weight and bulk of carry material reduced, but also the time spent working at height.

CO₂ Savings

For every metre of Gripple wire rope specified to replace threaded rod, it is estimated that a saving of 1.2 kg of embodied CO₂ is made. This equates to a total embodied CO₂ saving of up to 95% when switching from threaded rod to Gripple wire rope.

Aesthetics

Gripple wire rope kits are lightweight and virtually invisible. Comparing 2 mm wire rope to 8 mm threaded rod, the difference is easy to see. With a trend towards exposed services, Gripple wire rope kits enhance the workspace significantly – especially in retail environments. We also offer a range of black wire rope kits ideal for cinemas, theatres and other areas where the ceiling is painted black (See page 22).





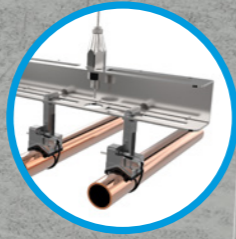
Applications

Pipework	page 8
HVAC	page 10
Electrical	page 12
Lighting	page 14
Modules	page 16
Signage	page 18
Acoustics	page 20
Black Line	page 22
Sleeving	page 24
Other Applications	page 26

Pipework

QT Universal Clamp &
Universal Bracket

Page 46



Trapeze Plus

Page 37



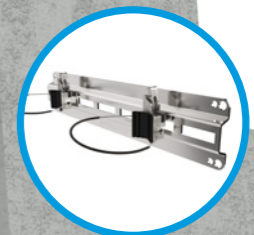
Trapeze

Page 36



QT Compact Clamp &
Low Profile Bracket

Page 48



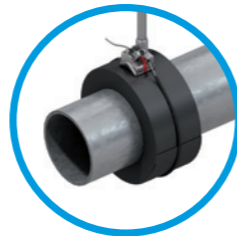
Kooltherm®

Page 52



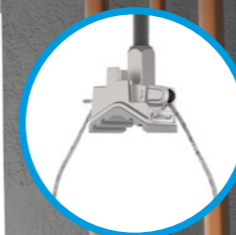
Armaflex

Page 52



Universal
Clamp

Page 50

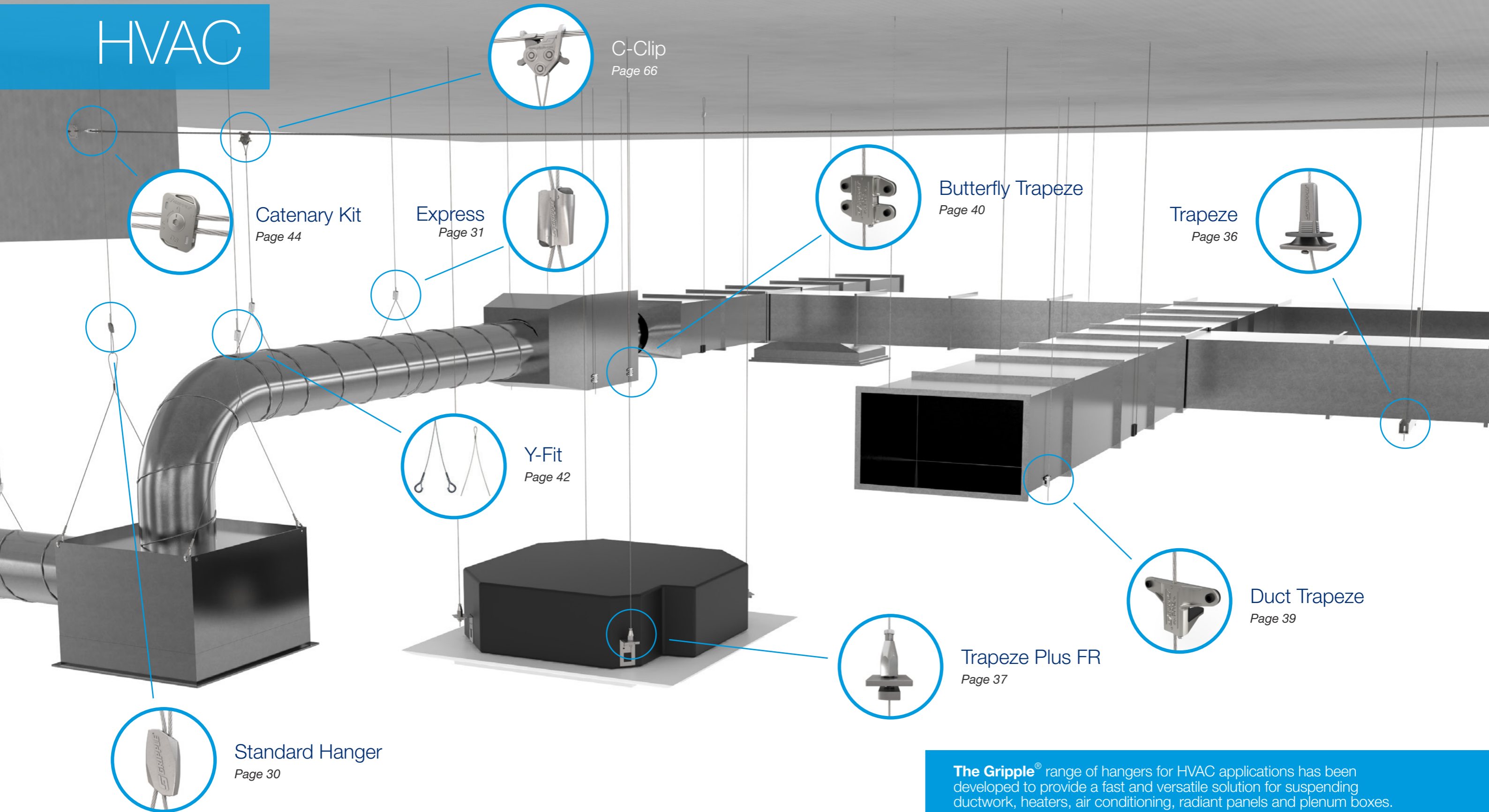


The **Gripple**® range of supports and hangers has been developed to provide a fast and versatile solution for suspending all types of pipework.

Gripple products are designed to save time, labour and reduce costs by making the installation quicker and easier. Supplied in ready-to-use kits, the products in this range require no on-site cutting and eliminate the need for fabricating pipe bracket assemblies, offering enormous health and safety benefits for your project.

Products shown are for internal use only. Images shown for illustrative purposes only. Please refer to product installation instructions for full information.

HVAC



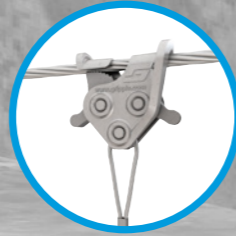
Products shown only for internal use. Images shown for illustrative purposes only.
Please refer to product installation instructions for full information.

The Gripple® range of hangers for HVAC applications has been developed to provide a fast and versatile solution for suspending ductwork, heaters, air conditioning, radiant panels and plenum boxes.

Our products are manufactured in the UK, and are designed to save you time, and labour costs, thus improving the efficiency of your installation. Unlike traditional methods, Gripple kits do not require cutting, filing or “hot works” permits. Gripple suspension solutions offer aesthetic design without compromising on strength; supplied in kits ready for use with a choice of wire rope lengths and end fixings.

Electrical

C-Clip
Page 66



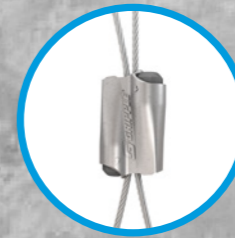
Catenary Kit
Page 44



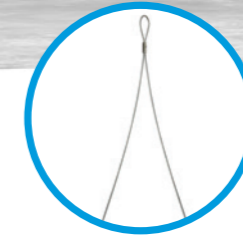
Standard Hanger
Page 30



Express
Page 31



Y-Fit
Page 42



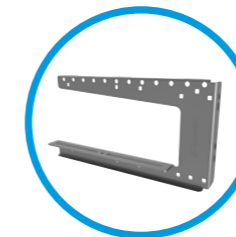
Trapeze
Page 36



Trapeze Plus
Trapeze Plus FR
Page 37



G-Bracket
Page 77

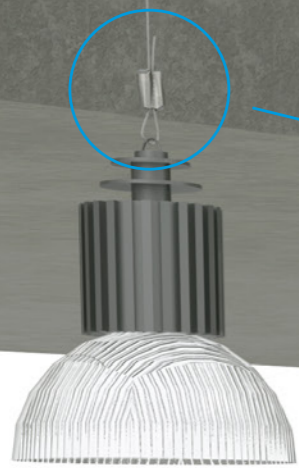


The **Gripple**® range of supports and hangers for electrical applications has been developed to provide a fast and versatile solution for suspending all types of electrical containment.

Gripple products are designed to save time, labour and reduce costs by making the installation quicker and easier. Supplied in ready-to-use kits, the products in this range are lightweight, require no on-site cutting and reduce the time spent at height, offering enormous health and safety benefits for your project.

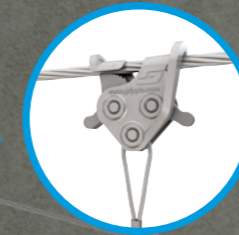
Products shown are for internal use only. Images shown for illustrative purposes only. Please refer to product installation instructions for full information.

Lighting



Express
Page 31

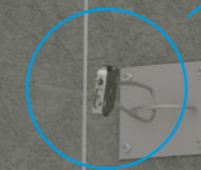
Standard Hanger
Page 30



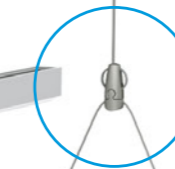
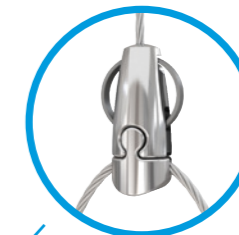
C-Clip
Page 66



Catenary Kit
Page 44



Angel
Page 32



Angel has a wide range of feet available to suit your lighting application.

See page 33 for details.

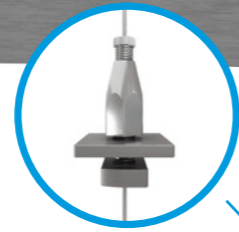


Products shown only for internal use. Images shown for illustrative purposes only. Please refer to product installation instructions for full information.

The Gripple® range of suspension solutions for lighting are manufactured in the United Kingdom, and have been designed to save you time, money and labour by improving the efficiency of the installation process. Unlike traditional methods, Gripple kits require no on-site cutting, filing or hot works, so offer enormous health and safety benefits for your project.

Our products offer a sleek, professional and discreet finish, without compromising on strength; supplied in ready-to-use kits with your choice of end fixing and wire rope length.

Modules



Trapeze Plus
Page 37

Accessories
Page 73



Standard Hanger
Page 30



Trapeze
Page 36

Products shown only for internal use. Images shown for illustrative purposes only.
Please refer to product installation instructions for full information.

The Gripple® range of suspension solutions for module applications has been developed to provide a fast and versatile solution for prefabricated building services modules, even those requiring installation in tight, hard to reach places.

Our products are manufactured in the UK, and are designed to save you time and labour costs, thus improving the efficiency of your installation. Wires can be pre-installed prior to module installation. Gripple hangers offer fall arrest for safe lifting should the lifter fail, and provide the added option of installing from the ground. As a result, installation time is dramatically reduced compared to traditional methods, with no need for cutting or bending rod into place. Unlike traditional methods, Gripple kits do not require cutting, filing or "hot works" permits.

As a proven method of installation hangers can be pre-installed safely, reducing time from module arrival on site to module installation with less risk of damage to the module.

Signage

Standard Hanger

Page 30



Angel

Page 32

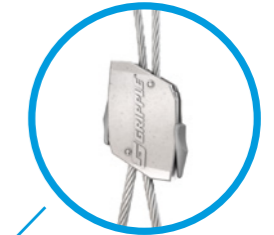
Angel has a wide range of feet available to suit your signage application.

See page 33 for details.



Express

Page 31



Angel Signage Rail

Page 33



PAY HERE



20% OFF

20% OFF

20% OFF

ACCESSORIES



The Gripple® range of signage products has been developed to provide a complete solution for the suspension of all forms of signage.

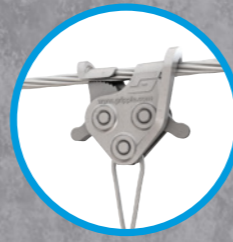
The variety of kits allows for complete flexibility and adjustability, without the use of additional tools. The range of designs provides a sleek, professional finish for you and your clients, without compromising on strength.

Our kits have been designed to save you time, labour and money by making installation quick and easy.

Products shown only for internal use. Images shown for illustrative purposes only. Please refer to product installation instructions for full information.

Acoustics

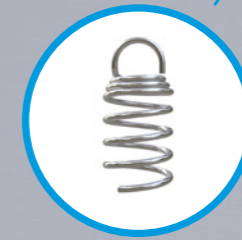
Catenary Kit
& C-Clip
Page 44



Express
Page 31



Acoustic
Spring
Anchor
Page 78



Angel
Page 32



The Gripple® range of acoustic solutions are manufactured in the United Kingdom, and have been designed to save you time, money and labour by improving the efficiency of the installation process. Unlike traditional methods, Gripple kits require no on-site cutting, filing or use of uPVC frames, so offer enormous time-saving benefits for your project.

Gripple products can fit directly into acoustic baffles and panels, uPVC frames and suspended ceilings, offering a sleek, professional and discreet finish, without compromising on strength. All products are supplied in ready-to-use kits with your choice of end fixing and wire rope length.

Products shown only for internal use. Images shown for illustrative purposes only.
Please refer to product installation instructions for full information.

Black Line



Gripple's ready-to-use suspension kits now come with the option of a black finish to further enhance the aesthetic appeal of the range.

The slim and unobtrusive aesthetics of Gripple's wire suspension systems have always proved perfectly suited to the design of many modern buildings, either where building services in the roof space are left exposed and visible, or for specific applications such as the suspension of lighting.

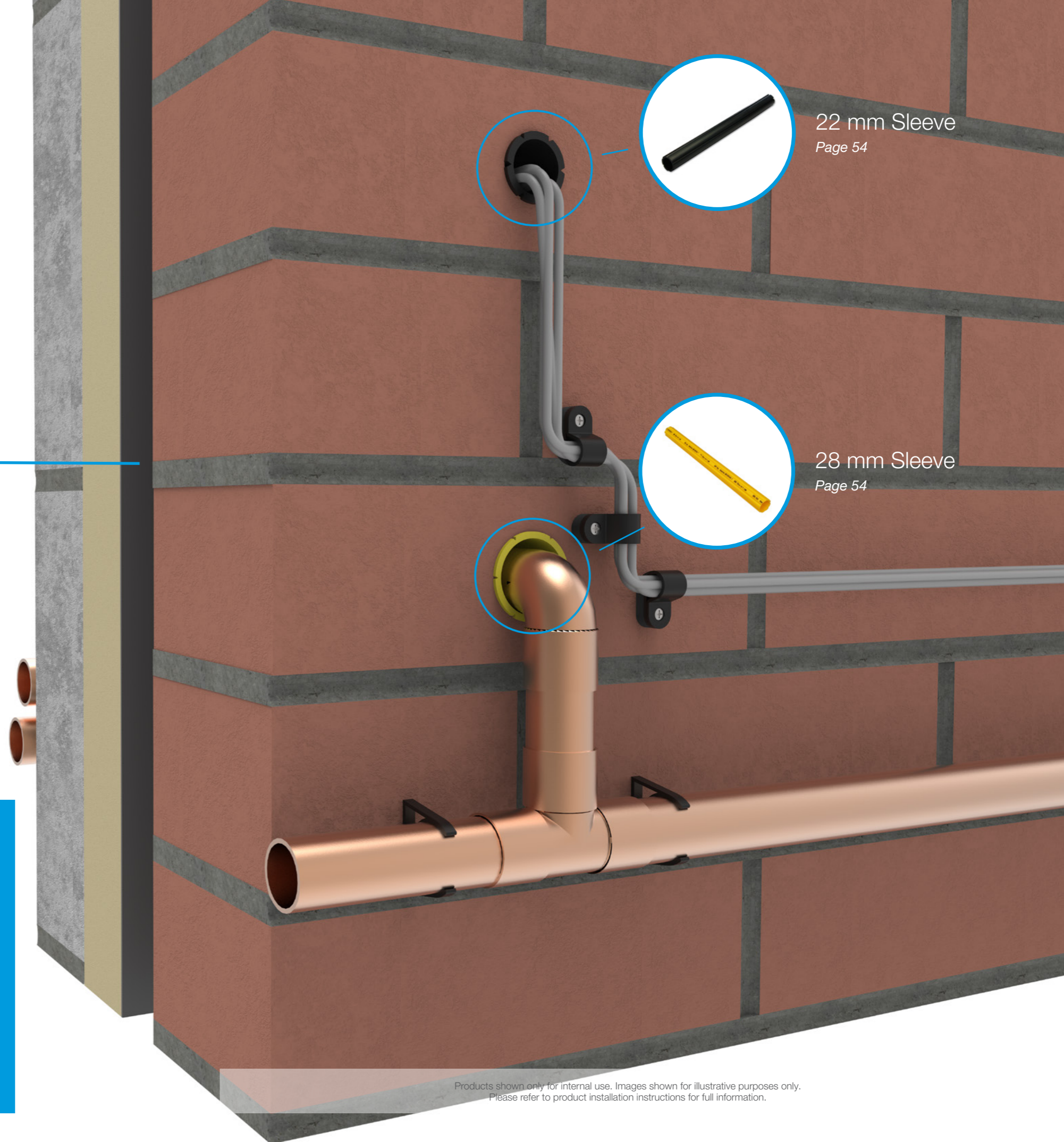
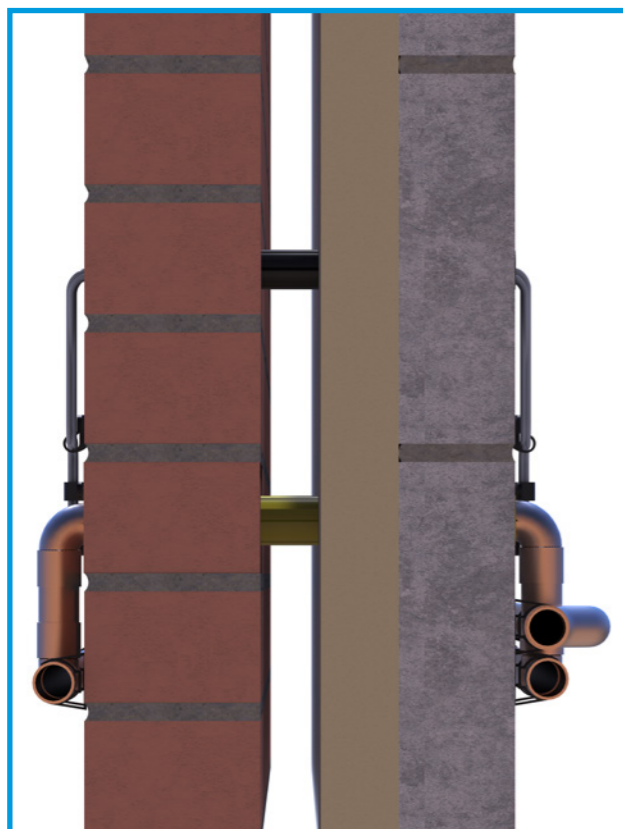
The new black line of products aims to build on this success and will be ideal for use in a wide variety of environments where aesthetics are paramount, including retail spaces, theatres, exhibition and concert halls.

Each kit is supplied complete with a black hanger, black wire rope and a choice of black end fixings.

For further information please call 0114 2752255 or email sales@gripple.com

Products shown only for internal use. Images shown for illustrative purposes only.
Please refer to product installation instructions for full information.

Sleeving



22 mm Sleeve
Page 54

28 mm Sleeve
Page 54

The Gripple® Thru-in-1® Sleeving System combines the functionality of a masonry drill with new technology to simplify the process of passing cables or pipes through cavity walls. Vastly reducing installation times, material and labour costs, it has been designed specifically for the professional trades.

While not exclusive to specific installations, the Thru-in-1 technology has been engineered with two applications in mind; the 22 mm option is ideal for electrical cabling installations, and the larger 28 mm product is well suited for gas pipe installations.

Gripple products are designed to save time, labour and reduce costs by making the installation quicker and easier.

Products shown only for internal use. Images shown for illustrative purposes only. Please refer to product installation instructions for full information.

Other Applications



Seismic Bracing & Blast Protection Systems



Seasonal (External Catenaries)



Bracing Solutions



Solar Panel Installation



Products

Standard Hanger	page 30
Express	page 31
Angel	page 32
Stainless Steel	page 34
Trapeze	page 36
Trapeze Plus	page 37
Trapeze Cable Basket Adaptor	page 38
Duct Trapeze	page 39
Butterfly Trapeze	page 40
Y-Fit & Y-Fit Accessory	page 42
Catenary Kit & C-Clip	page 44
QT Universal Clamp	page 46
Universal Bracket	page 47
QT Compact Clamp	page 48
Low Profile Bracket	page 49
Universal Clamp	page 50
Pipework Insulation Collars	page 52
Thru-In-1 Sleeving System	page 54

Standard Hanger

Used to suspend a variety of HVAC, pipework and electrical services from different substrates, complete with end fixings.

- Ideal for fast suspension of cable containment, pipework, air conditioning and lighting
- Up to 6 times faster to install than traditional hanging systems
- Versatile and simple to use
- Strong, safe and industry approved
- Aesthetically discreet and lightweight



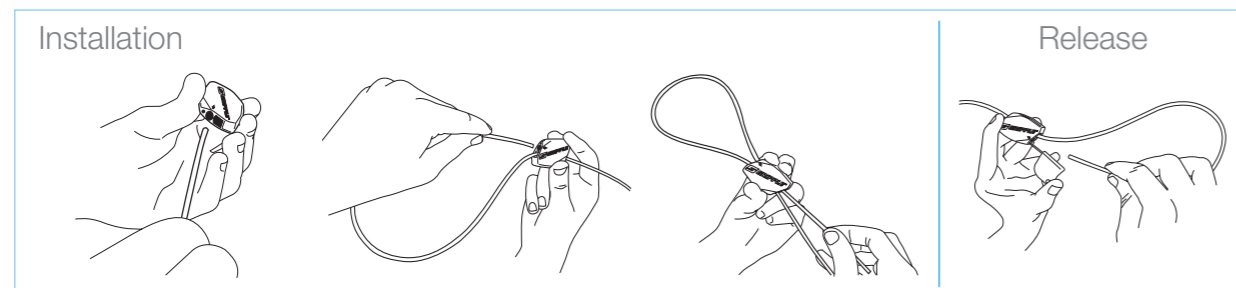
Available in sizes No.1 - No.5



All hangers are supplied as ready-to-use kits with a length of wire rope and end fixing of your choice.

5:1 SAFETY FACTOR LOAD RATING	No.1	No.2	No.3	No.4	No.5
	10 kg	45 kg	90 kg	225 kg	325 kg

END FIXINGS PAGE 57	ACCESSORIES PAGE 73	TECHNICAL PAGE 83	HANGER KIT CODES PAGE 35
------------------------	------------------------	----------------------	-----------------------------



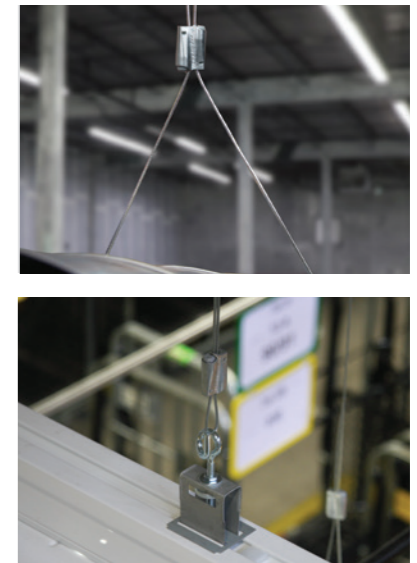
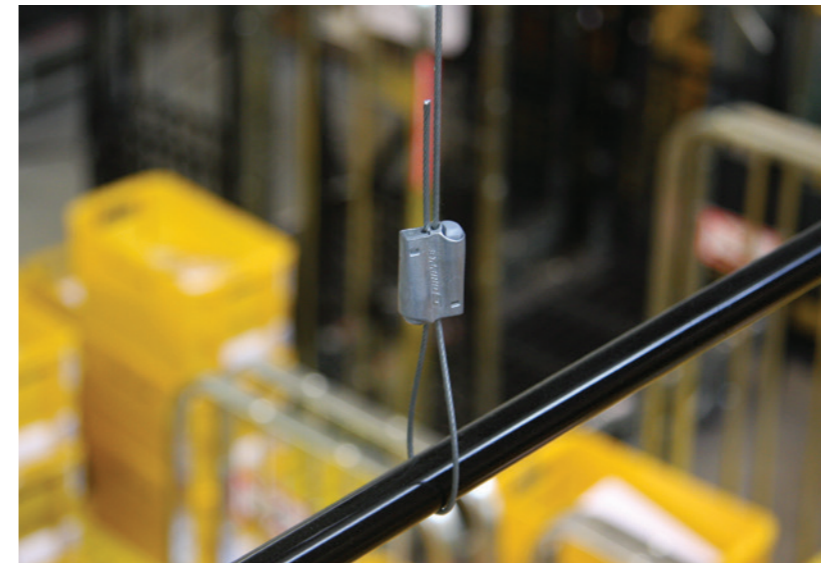
Express

Solution for fast suspension of a variety of services, designed with a keyless release mechanism.

- The Express No.1 is ideal for signage, shopfitting, lighting and other lightweight fixtures
- The Express No.2 is ideal for mechanical and electrical applications
- Up to 6 times faster to install than traditional methods
- Keyless - no tool required for adjustment
- Ergonomic buttons allow rapid adjustment
- Discreet and aesthetic design



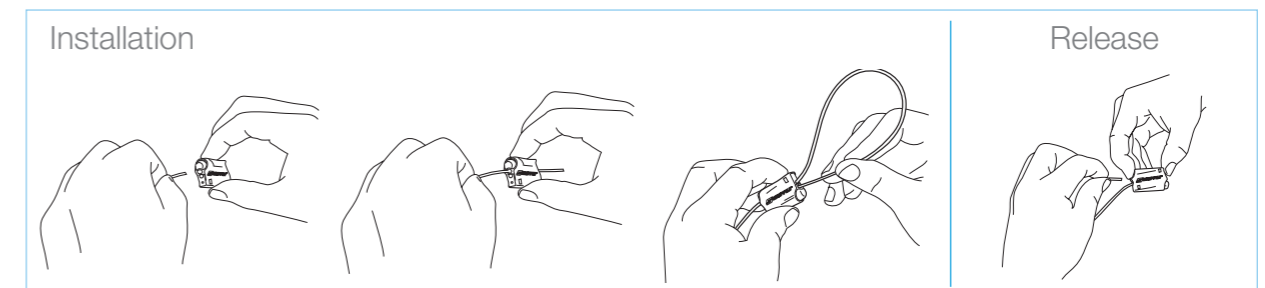
Available in sizes No.1 - No.2



All hangers are supplied as ready-to-use kits with a length of wire rope and end fixing of your choice.

5:1 SAFETY FACTOR LOAD RATING	No.1	No.2
	15 kg	45 kg

END FIXINGS PAGE 57	ACCESSORIES PAGE 73	TECHNICAL PAGE 83	HANGER KIT CODES PAGE 35
------------------------	------------------------	----------------------	-----------------------------



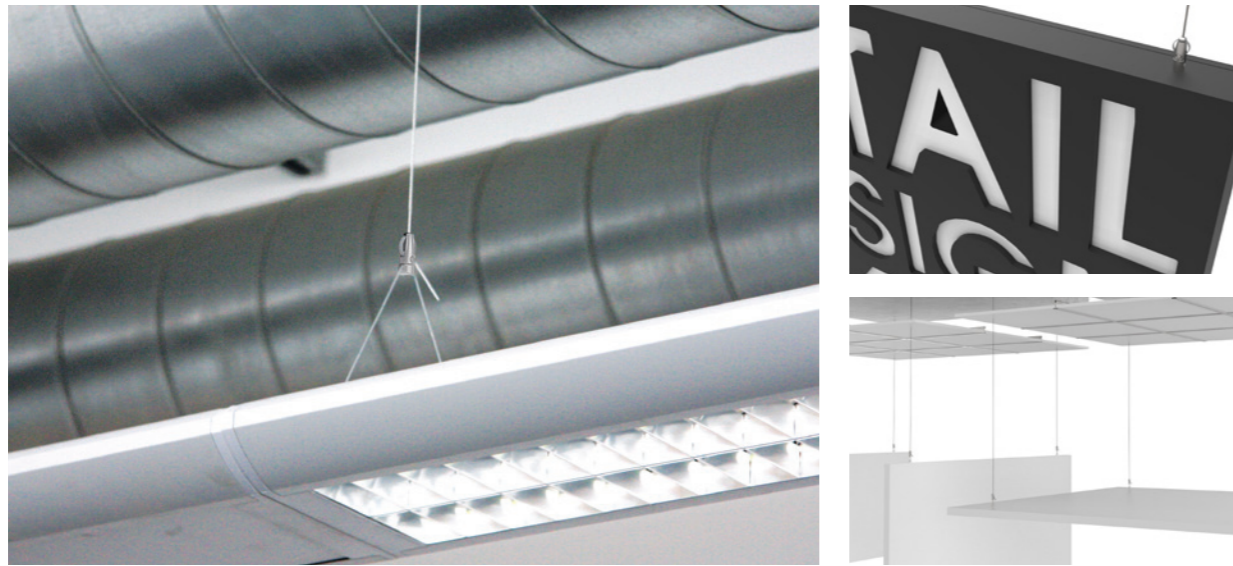
Angel

Designed for architectural lighting suspensions, signage, acoustic baffles and installations where aesthetics are important.

- Simple one handed operation for easy adjustment
- Contemporary design to complement the overall suspension
- Extensive range of end fixings allowing installation in most locations
- Variety of feet fixings to enable attachment to different fixing points
- Uses 1.5 mm wire rope to make the suspension as discreet as possible



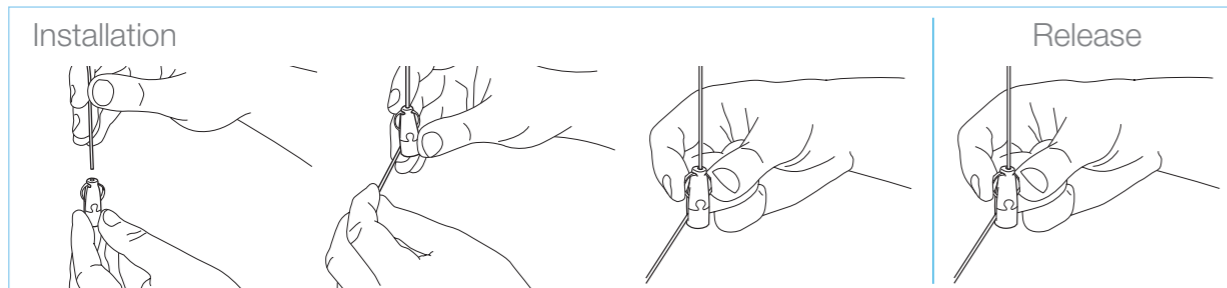
Available with a range of feet fixings



All hangers are supplied as ready-to-use kits with a length of wire rope and end fixing of your choice.

5:1 SAFETY FACTOR LOAD RATING	No.1
	15 kg

END FIXINGS PAGE 57	ACCESSORIES PAGE 73	TECHNICAL PAGE 83	HANGER KIT CODES PAGE 35
------------------------	------------------------	----------------------	-----------------------------



Angel Feet

The Angel is now even more versatile with a wide range of feet available to suit your application.

Y-Fit

- Dual fixing points for balance
- 150, 300 and 460 mm leg lengths as standard
- Available with a variety of wire end fixings
- Central wire exit



Signage

- Ideal for signage up to 5 mm in thickness
- Grub screw for direct attachment
- Available with a variety of wire end fixings
- Side wire exit



Hook

- Ideal for light fittings, signage, or for use with eyebolts, spring and wire anchors
- Safety clasp for security
- Integrated hook with 2.5 mm clearance
- Side wire exit



Swivel

- Swivel feature for suspension at angles up to 90°
- Available in M4, M6, M8 and 1/4" UNC
- Female: maximum insertion depth 6 mm
- Male: 15 mm exposed thread length as standard
- Side wire exit



Side Exit Female

- Female threaded foot, ideal for direct attachment to light fittings, frames and acoustic panels
- Available in M4, M6 and 1/4" UNC
- Maximum insertion depth 6 mm
- Side wire exit



Disc

- Ideal for use with various lighting tracks and track hangers
- Disc diameter ø17.5 mm
- Available with a variety of wire end fixings
- Side wire exit



Side Exit Male

- Threaded male foot, ideal for direct attachment to light fittings, frames and acoustic panels
- Available in M4, M6 and 1/4" UNC as standard. M5, M8, M10 and M13 adaptors available
- 15 mm exposed thread length as standard, bespoke lengths on request
- Side wire exit



Signage Rail

- Ideal for suspending signage or panels on either a rail or by screws
- Two screw holes for direct attachment
- Available with central wire exit or side wire exit



Central Exit

- Threaded male foot, ideal for direct attachment to light fittings
- Available in M6 and 1/4" UNC, as standard
- 5 mm minimum exposed thread length as standard, bespoke lengths on request
- Central wire exit



All hangers are supplied as ready-to-use kits with a length of wire rope and end fixing of your choice.

END FIXINGS - PAGE 57

ACCESSORIES - PAGE 73

TECHNICAL - PAGE 83

Trapeze

Ideal for single and multi-tiered suspension of piping, electrical and HVAC services.

- Ideal for fast suspension of cable containment, pipework, air conditioning cassettes and chilled beams
- Aesthetic, tapered design; accommodates all slots sizes
- Discreet - fits completely inside the channel
- Pre-fits onto channel to ease working at height
- Available as an accessory for multi-tiered installations
- Ideal for use with Gripple Universal Bracket and QT Universal Clamp for mechanical installations



Available in sizes No.2 - No.4



All hangers are supplied as ready-to-use kits with a length of wire rope and end fixing of your choice.

5:1 SAFETY FACTOR LOAD RATING	No.2	No.3	No.4
	45 kg	90 kg	225 kg

END FIXINGS PAGE 57	ACCESSORIES PAGE 73	TECHNICAL PAGE 83	TRAPEZE KIT CODES PAGE 41
------------------------	------------------------	----------------------	------------------------------



*When releasing: 1. Remove load, 2. Pull tail wire, 3. Activate pin

Trapeze Plus

All steel Trapeze Plus supplied with galvanised wire rope as standard. Packed with new features to make the suspension of building services even more secure and durable.

- Reduced time working at height; pre-install into channel using the washer/nut supplied
- Tool free setting
- Easy-to-use integral release button for finite adjustment
- Tighten the locking screw for ultimate security
- Channel can be multi-tiered to optimise space
- Fire Rated - The Trapeze Plus FR No.3 is available with stainless steel wire and a choice of end fixings: M8 Stud, Eyelet and 90° Eyelet. It is BRE Certified up to F120 in accordance with BS476



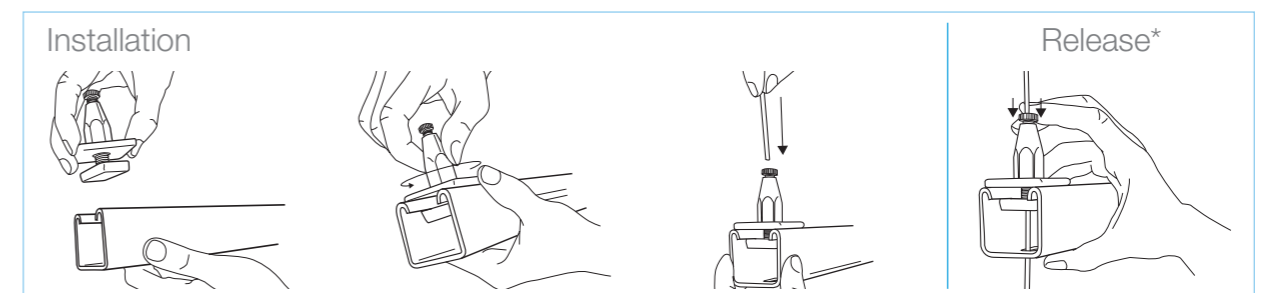
Available in sizes No.2 - No.4 Central Exit and No.2 - No.3 Side Exit



All hangers are supplied as ready-to-use kits with a length of wire rope and end fixing of your choice.

3:1 SAFETY FACTOR LOAD RATING	No.2	No.3	No.4
	45 kg	90 kg	225 kg

END FIXINGS PAGE 57	ACCESSORIES PAGE 73	TECHNICAL PAGE 83	TRAPEZE KIT CODES PAGE 41
------------------------	------------------------	----------------------	------------------------------



*When releasing: 1. Remove load, 2. Pull tail wire, 3. Activate pin

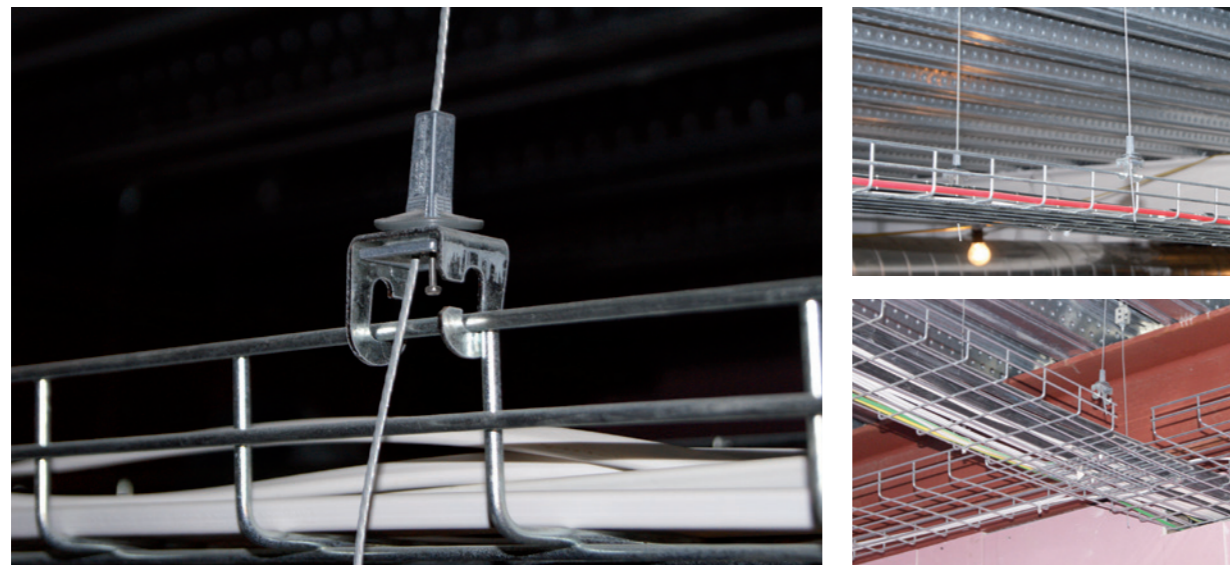
Trapeze Cable Basket Adaptor

Ideal for single and multi-tiered suspension of cable containment, basket and tray.

- Ideal for fast suspension of multi-tiered cable baskets
- Eliminates channel bearers
- Easy-to-use integral release pin to allow finite adjustment
- Designed to suspend cable of up to 60 kg/m (based on 1.5 m bracket spacing)



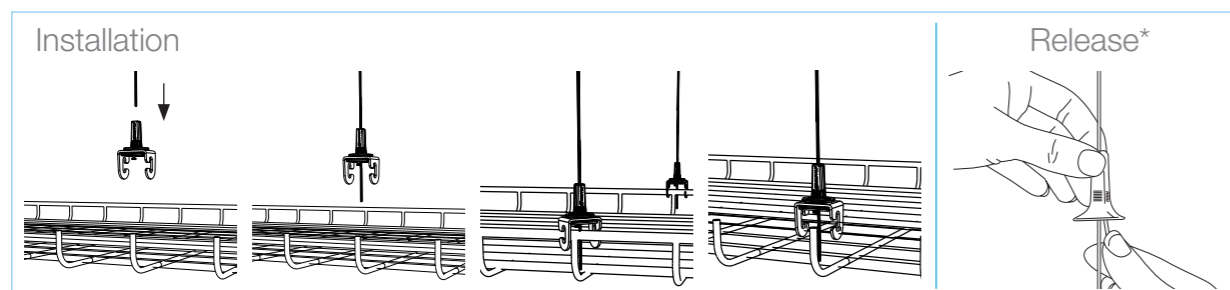
Available in size No.2



All hangers are supplied as ready-to-use kits with a length of wire rope and end fixing of your choice.

5:1 SAFETY FACTOR LOAD RATING	No.2
	45 kg

END FIXINGS PAGE 57	ACCESSORIES PAGE 73	TECHNICAL PAGE 83	TRAPEZE KIT CODES PAGE 41
------------------------	------------------------	----------------------	------------------------------



*When releasing: 1. Remove load, 2. Pull tail wire, 3. Activate pin

Duct Trapeze

Ideal for fast suspension of rectangular ducting, attenuators and other HVAC applications.

- Eliminates channel support
- Suitable for ducting made from 0.6 - 1.5 mm gauge steel
- Spreads the load across three fixing points, for self-drilling screws or pop rivets (not provided)
- Rubber pad prevents air leakage and dampens vibration
- Conforms to DW144 class D
- Pin allows rapid adjustment



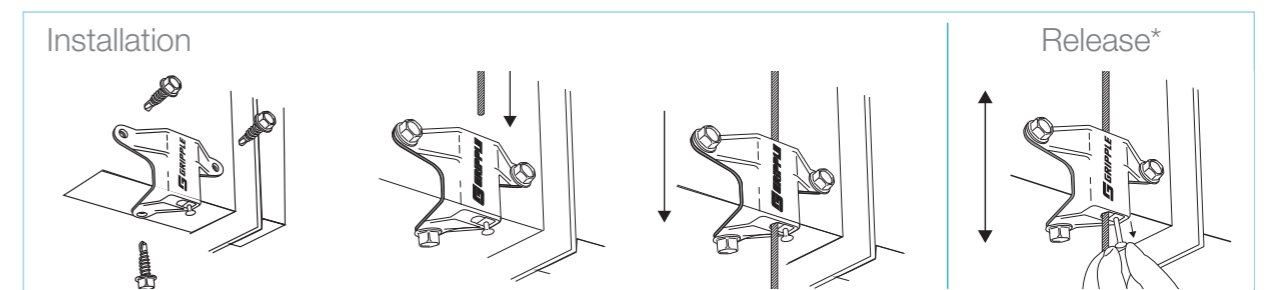
Available in size No.2



All hangers are supplied as ready-to-use kits with a length of wire rope and end fixing of your choice.

5:1 SAFETY FACTOR LOAD RATING	No.2
	45 kg

END FIXINGS PAGE 57	ACCESSORIES PAGE 73	TECHNICAL PAGE 83	TRAPEZE KIT CODES PAGE 41
------------------------	------------------------	----------------------	------------------------------

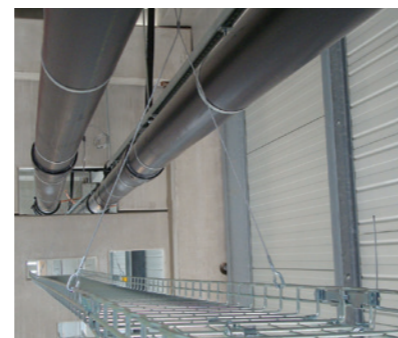
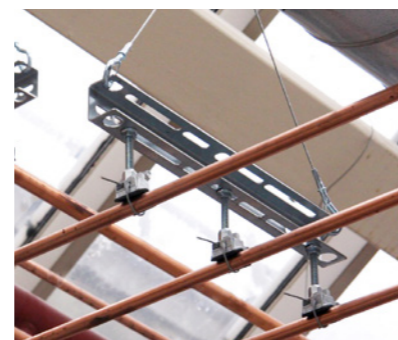


*When releasing: 1. Remove load, 2. Pull tail wire, 3. Activate pin

Y-Fit & Y-Fit Accessory

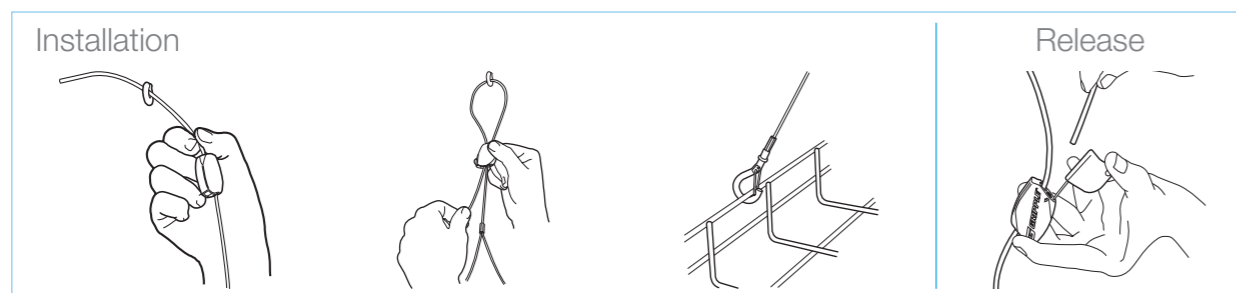
Single point suspension for balanced services

- Ideal for cable tray or basket
- One leg can be detached to allow cable installation
- Available with a range of end fixings, and a variety of leg lengths
- Snap Hook version is ideal for use with the Gripple G-Bracket
- Accessory version available, ideal for longer drops



All hangers are supplied as ready-to-use kits with a length of wire rope and end fixing of your choice.

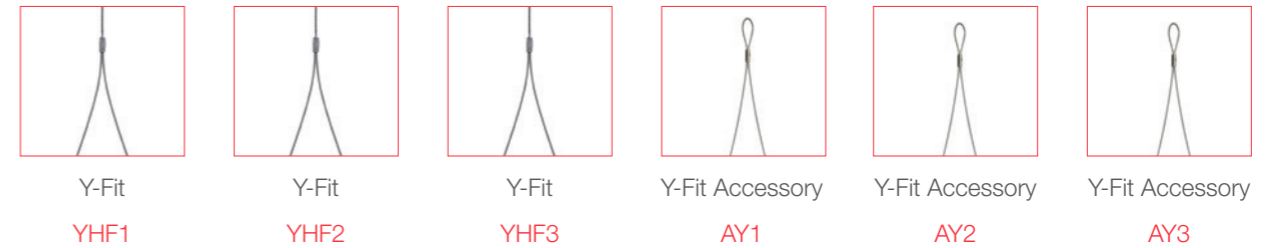
[END FIXINGS - PAGE 57](#)
[ACCESSORIES - PAGE 73](#)
[TECHNICAL - PAGE 83](#)



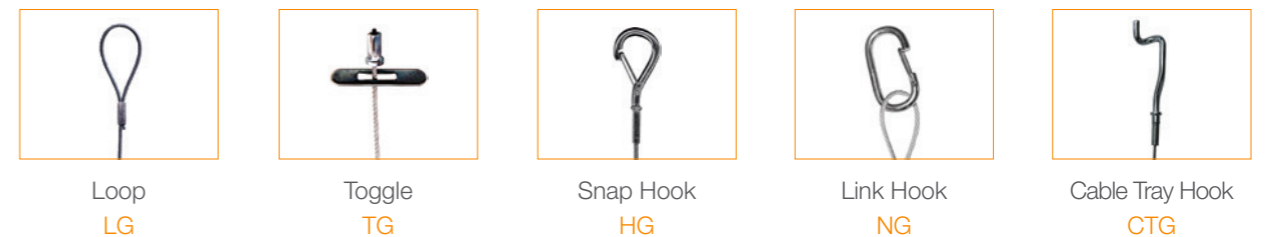
Y-Fit Kit Codes

How to work out your unique product code

1 CHOOSE YOUR PRODUCT



2 CHOOSE YOUR LEG END FIXING

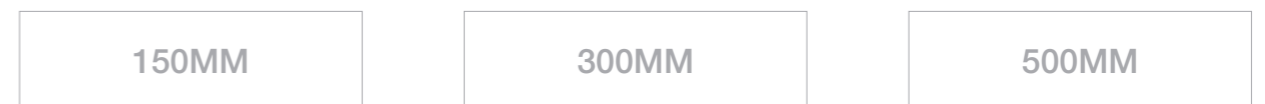


3 CHOOSE YOUR WIRE LENGTH*



*Not available on Y-Fit Accessory

4 CHOOSE YOUR LEG LENGTH*



*Bespoke leg lengths are available, please call 0800 0184 264

Enter your unique product code (e.g. YHF3-HG-4M-300MM):

- - -

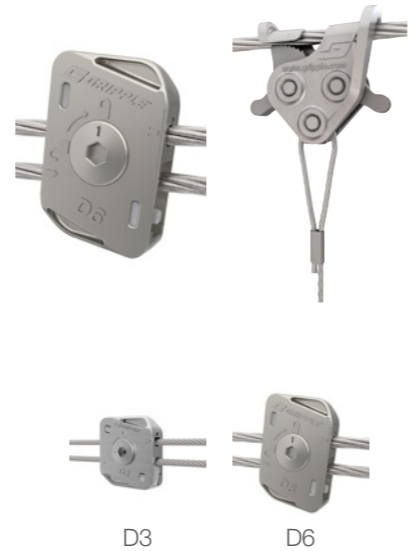
PRODUCT LEG END FIXING WIRE LENGTH LEG LENGTH

For more available End Fixings and further product information please call **0800 0184 264** or visit our website www.gripple.com for further details.

Catenary Kit & C-Clip

Create secure, overhead spans by running high strength wire rope between two fixing points. Ideal for applications where no direct vertical anchor point is available. The Gripple C-Clip, an innovative twist-on/off device, allows you to suspend from anywhere along the span.

- Visually discreet and lightweight
- Can be fitted retrospectively
- No tools needed to install
- Available in 3 mm and 6 mm wire rope diameters, for suspensions up to 100 kg per span
- C-Clip End Fixing allows horizontal and vertical adjustment
- Cams lock solidly in place, even at angles up to 60°



Available in sizes No.3 and No.6

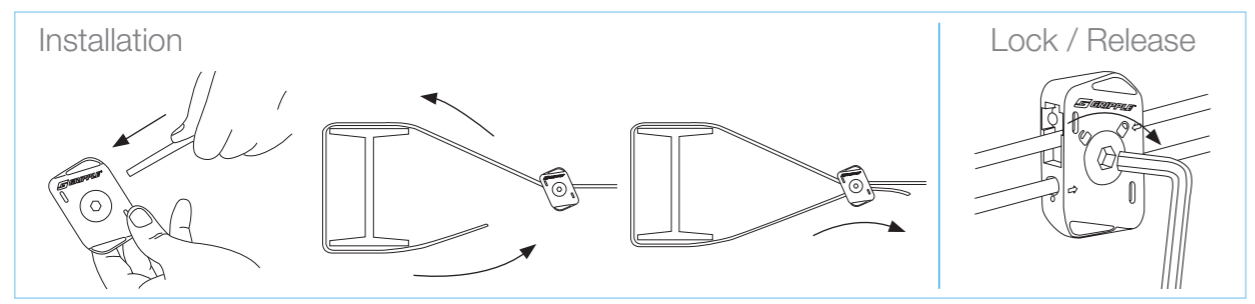


Supplied as ready-to-use kits, including galvanised wire rope cut to bespoke lengths, a hex locking and a release key.

5:1 SAFETY FACTOR LOAD RATING FREE SPAN	No.3	No.6
	30 kg	100 kg

ACCESSORIES - PAGE 73

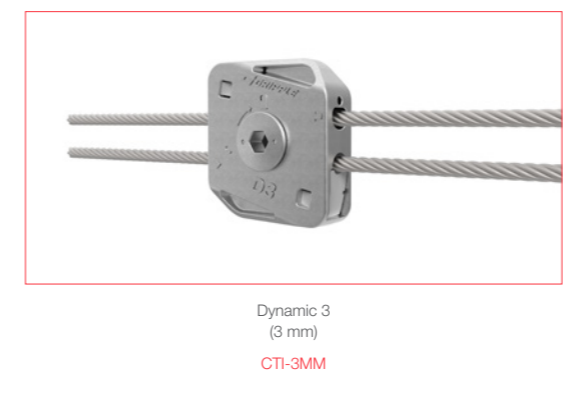
TECHNICAL - PAGE 83



Catenary Kit Codes

How to work out your unique product code

1 CHOOSE YOUR PRODUCT



2 CHOOSE YOUR WIRE LENGTH

- 3M
- 5M
- 8M
- 10M
- 20M
- 30M
- 40M

Enter your unique product code (e.g. CTI-3MM-30M):

<input type="text"/>	<input type="text"/>	<input type="text"/>	<input type="text"/>	<input type="text"/>	<input type="text"/>	<input type="text"/>	-	<input type="text"/>	<input type="text"/>	<input type="text"/>
PRODUCT								WIRE LENGTH		

C-Clip End Fixing can be ordered to complement the Catenary Kit on the hanger product code pages

Catenary Wall Brackets are available to complement the Catenary Kit using the code below



C-Clip 3 mm
CC3

C-Clip 6 mm
CC6



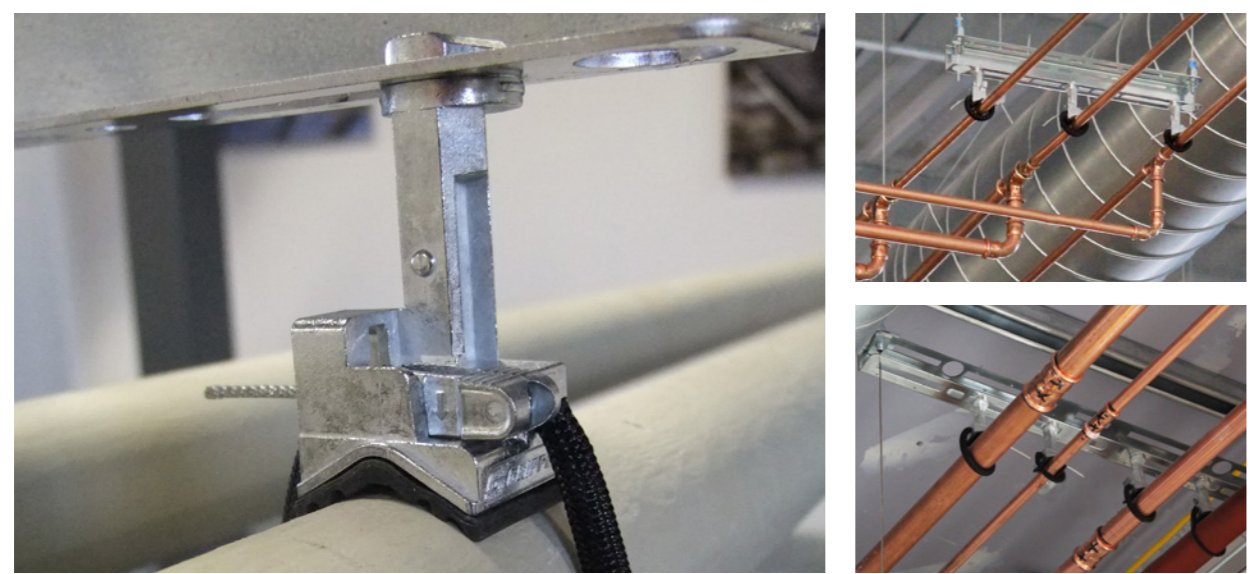
CAT-BRACKET-100MM

For more available End Fixings and further product information please call 0800 0184 264 or visit our website www.gripple.com for further details.

QT Universal Clamp

The Quick Twist Universal Clamps are used in conjunction with Universal Brackets for quick and easy support of all types of pipework within mechanical and plumbing services.

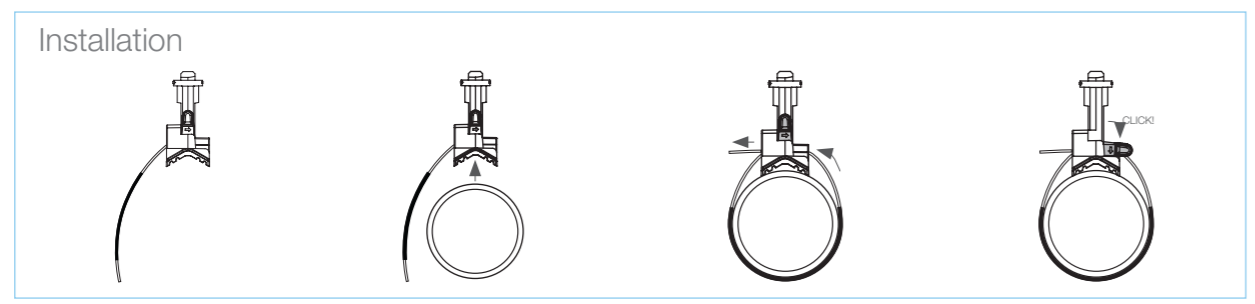
- Replaces more than 11 different pipe ring sizes
- Suitable for all pipe sizes from \varnothing 15 mm to \varnothing 104 mm OD
- Improved insulation against vibration
- Simplifies 'take-off' process
- Easy site storage - reduces waste
- Quarter turn fixing - tool free attachment and adjustment
- Retractable, removable sleeve, pre-fitted to wire rope to prevent galvanic corrosion
- Available with Kootherm®/Armflex® pipe collars for insulated pipe



Supplied in ready-to-use kits with Universal Bracket sizes 230, 380, 640, 1020 and 1200 mm.

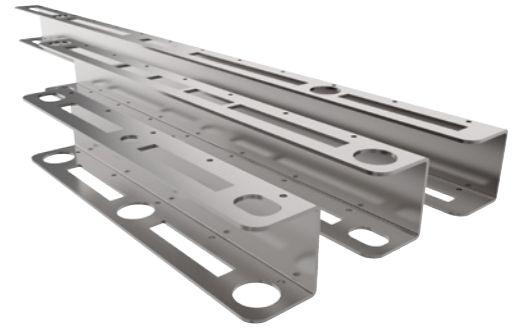
5:1 SAFETY FACTOR LOAD RATING	QT UNIVERSAL CLAMP
	45 kg

ACCESSORIES PAGE 73	TECHNICAL PAGE 83	PIPEWORK KIT CODES PAGE 51
------------------------	----------------------	-------------------------------



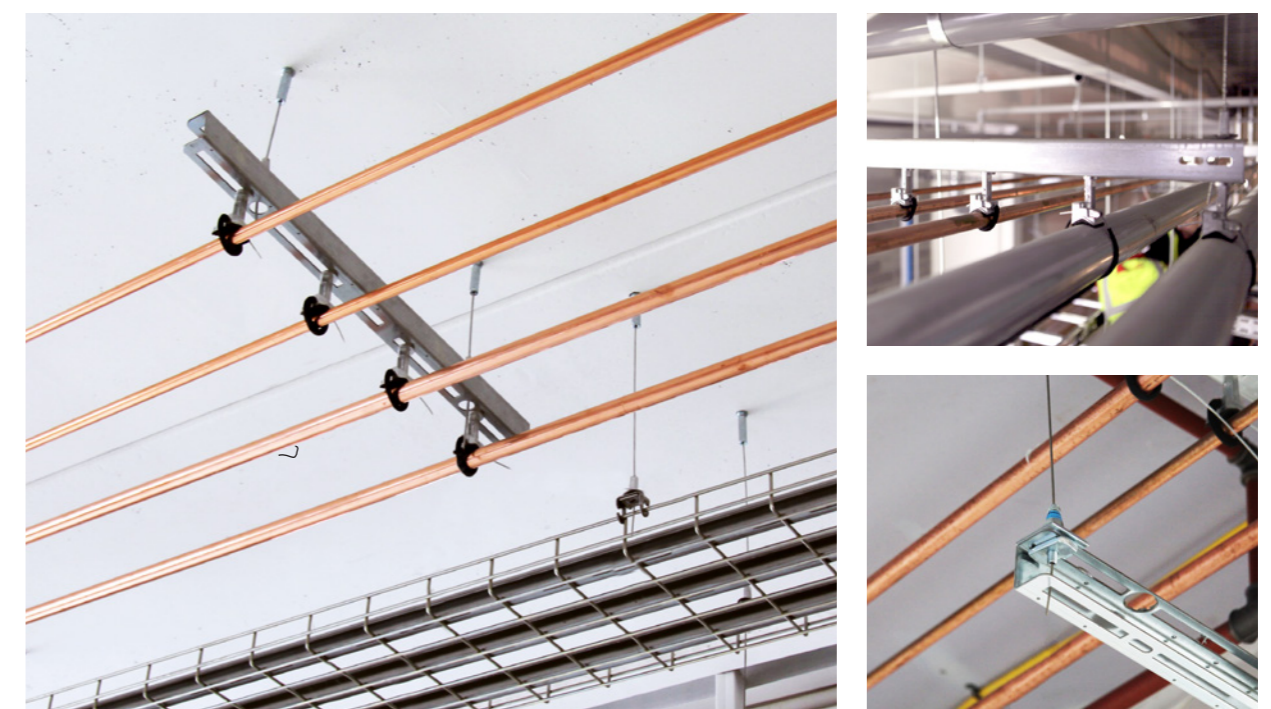
Universal Bracket

Universal Brackets are supplied with Quick Twist Universal Clamps for quick and easy support of pipework within mechanical and plumbing services.



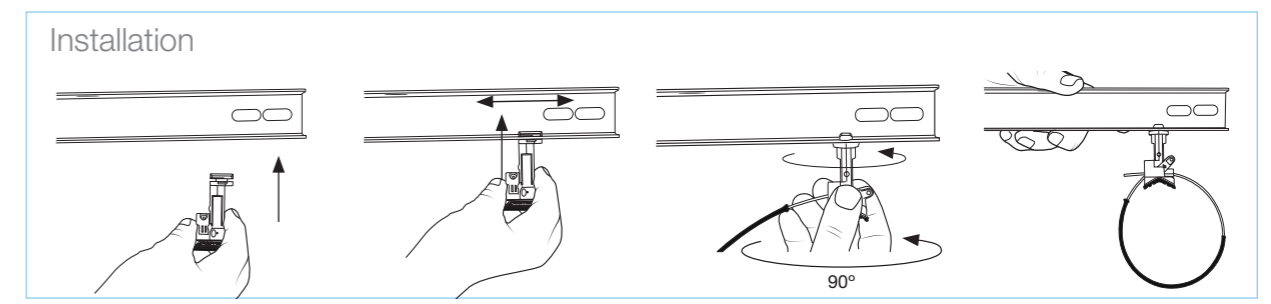
- Quick and easy installation - Universal Brackets are supplied with QT Universal Clamps or QT Compact Clamps featuring quarter turn fixing
- Versatile - Can be bolted directly to soffit or wall, or suspended from the soffit using threaded rod or Gripple wire suspension kits e.g. Trapeze
- Saves labour time - Eliminates the need for cutting channel on site, allowing more productive use of labour
- Improves health and safety - No tools or "Hot Works" permit required for installation
- Can be purchased as pre-assembled on request

Available in sizes
PB230, PB380, PB640,
PB1020, PB1200



Supplied as ready-to-use kits with a choice of QT Universal Clamps or QT Compact Clamps.

ACCESSORIES PAGE 73	TECHNICAL PAGE 83	PIPEWORK KIT CODES PAGE 51
------------------------	----------------------	-------------------------------



QT Compact Clamp

The Quick Twist Compact Clamps are used in conjunction with Low Profile Brackets and Universal Brackets for quick and easy support of all types of pipework within mechanical and plumbing services.

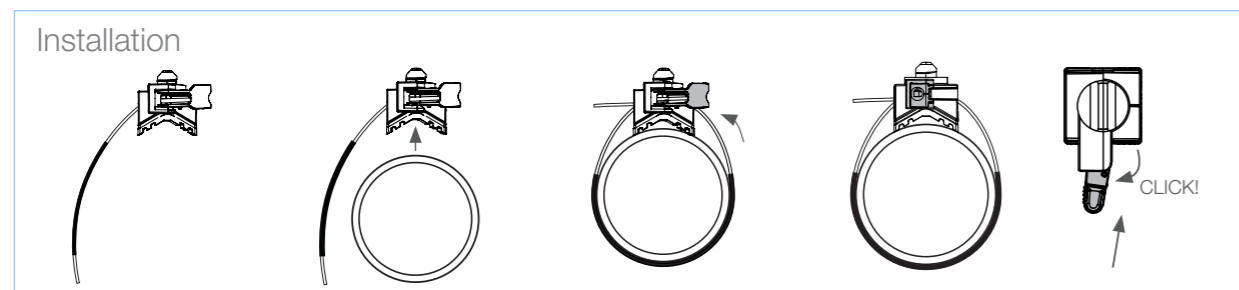
- Up to 6 times faster than traditional methods
- Suitable for all pipe sizes from \varnothing 15 mm to \varnothing 104 mm OD
- Replaces more than 11 different pipe ring sizes
- Simplifies 'take-off' process
- Easy site storage, reduces waste
- Quarter turn fixing - tool free attachment and adjustment
- Available with Kooltherm®/Armaflex® pipe collars for insulated pipe
- Improved insulation against vibration



Supplied in ready-to-use kits with Low Profile Bracket sizes 180, 350, 650, 950 and 1200 mm.

5:1 SAFETY FACTOR LOAD RATING	QT COMPACT CLAMP 45 kg
----------------------------------	---------------------------

ACCESSORIES PAGE 73	TECHNICAL PAGE 83	PIPEWORK KIT CODES PAGE 51
------------------------	----------------------	-------------------------------



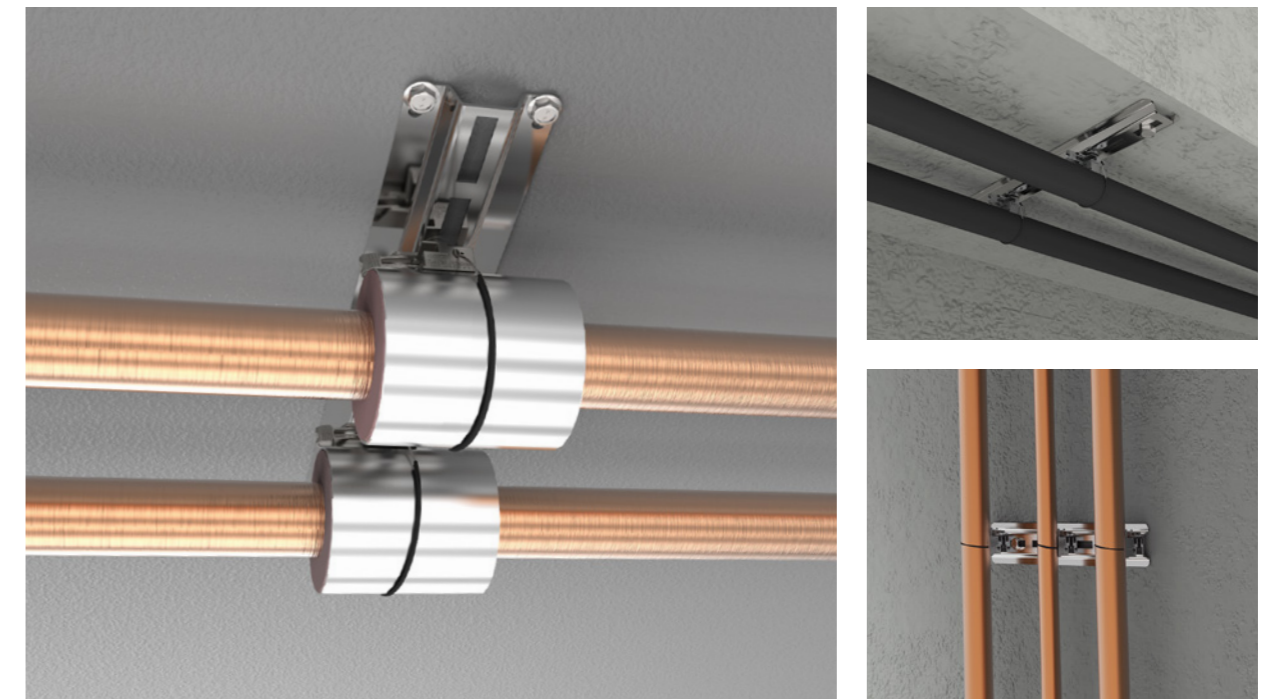
Low Profile Bracket

Low Profile Brackets are supplied with Quick Twist Compact Clamps for quick and easy support of pipework within mechanical and plumbing services.



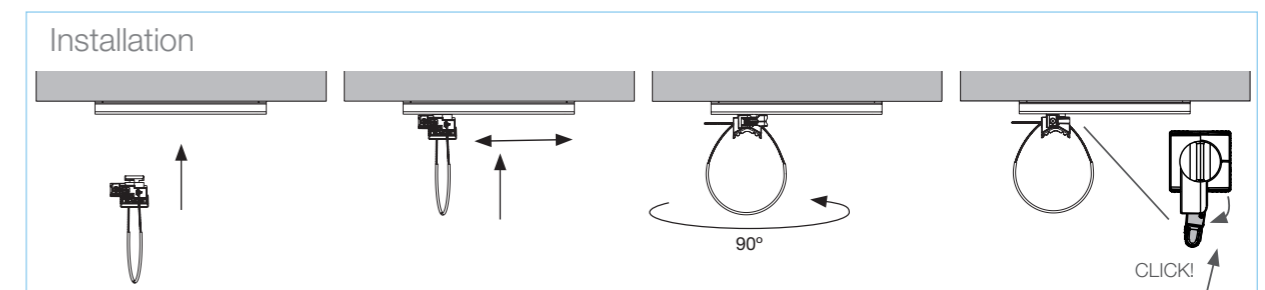
- Quick and easy installation - Brackets are supplied with QT Universal Clamps or QT Compact Clamps featuring quarter turn fixing
- Versatile - Can be bolted directly to soffit or wall
- Saves labour time - Eliminates the need for cutting channel on site, allowing more productive use of labour
- Improves health and safety - No tools or "Hot Works" permit required for installation
- Can be purchased and pre-assembled on request

Available in sizes
180, 350, 650,
950 and 1200 mm



Supplied in ready-to-use kits with a choice of QT Universal Clamps or QT Compact Clamps.

ACCESSORIES PAGE 73	TECHNICAL PAGE 83	PIPEWORK KIT CODES PAGE 51
------------------------	----------------------	-------------------------------



Universal Clamp

The Universal Clamp is engineered for hanging all types of pipework and ductwork within mechanical and plumbing services.

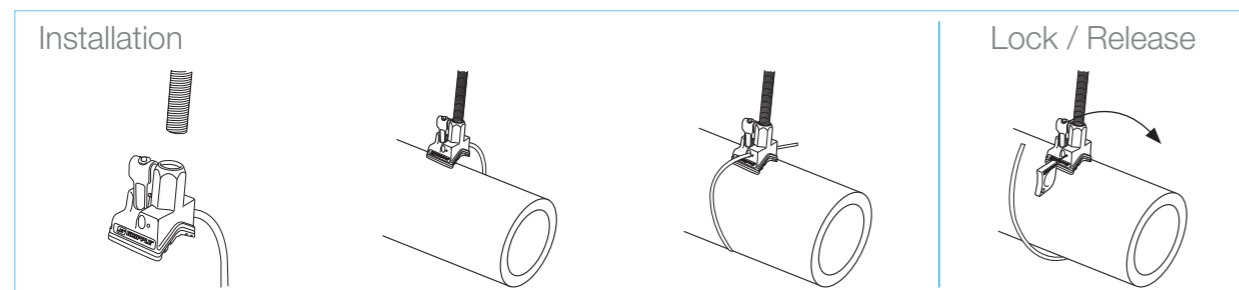
- Suitable for all pipe sizes from \varnothing 15 mm to \varnothing 104 mm OD
- Replaces more than 11 different pipe ring sizes
- Retractable, removable sleeve is pre-fitted to wire rope to prevent galvanic corrosion
- Improved insulation against vibration
- Easy site storage, reduces waste
- Simplifies 'take-off' process



Supplied individually or as part of a bespoke bracket system to suit your application.

5:1 SAFETY FACTOR LOAD RATING	UNIVERSAL CLAMP 45 kg
----------------------------------	--------------------------

ACCESSORIES PAGE 73	TECHNICAL PAGE 83	PIPEWORK KIT CODES PAGE 51
------------------------	----------------------	-------------------------------



Pipework Kit Codes

How to work out your unique product code

1 CHOOSE YOUR PIPE BRACKET

 Pipe Bracket 230 mm PB230	 Pipe Bracket 380 mm PB380	 Pipe Bracket 640 mm PB640	 Pipe Bracket 1020 mm PB1020	 Pipe Bracket 1200 mm PB1200
 Low Profile Pipe Bracket 180 mm LPB180	 Low Profile Pipe Bracket 350 mm LPB350	 Low Profile Pipe Bracket 650 mm LPB650	 Low Profile Pipe Bracket 950 mm LPB950	 Low Profile Pipe Bracket 1200 mm LPB1200

2 CHOOSE YOUR CLAMP QUANTITY

2	3	4	5	6	7	8
---	---	---	---	---	---	---

3 CHOOSE YOUR TYPE OF CLAMP

 QT Universal Clamp T	 QT Compact Clamp C	 Universal Clamp I
--	--	---

Enter your unique product code (e.g. LPB650-3GC2-C-400):

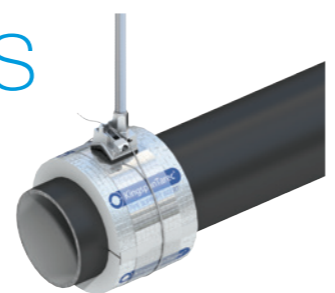
<input type="text"/>	<input type="text"/>	<input type="text"/>	<input type="text"/>	<input type="text"/>	<input type="text"/>	<input type="text"/>	-	<input type="text"/>	G	C	2	-	<input type="text"/>	-	4	0	0
PIPE BRACKET							CLAMP QUANTITY					TYPE OF CLAMP		WIRE LENGTH (MM)			

For more details on available combinations and further product information please call 0800 0184 264 or visit our website www.gripple.com for further details.

Pipe Insulation Collars

To complement Gripple Pipe Clamps, Kooltherm® and Armaflex® pipe collars provide rapid installation and ensure insulation continuity without thermal breaks.

- Designed specifically for use with Gripple pipe clamps
- Space saving - advantageous for applications in confined spaces or areas where space is at a premium
- Universal - suitable for mild steel, stainless steel, copper and plastic pipes in a range of sizes
- High performance - reduced heat loss & highly moisture resistant
- Temperature range: Kooltherm -50°C to +120°C
Armaflex -183°C to +105°C
- Thermal conductivity: Kooltherm 0.021 W/m·K at 10°C
Armaflex 0.036 W/m·K at 10°C



Kooltherm®

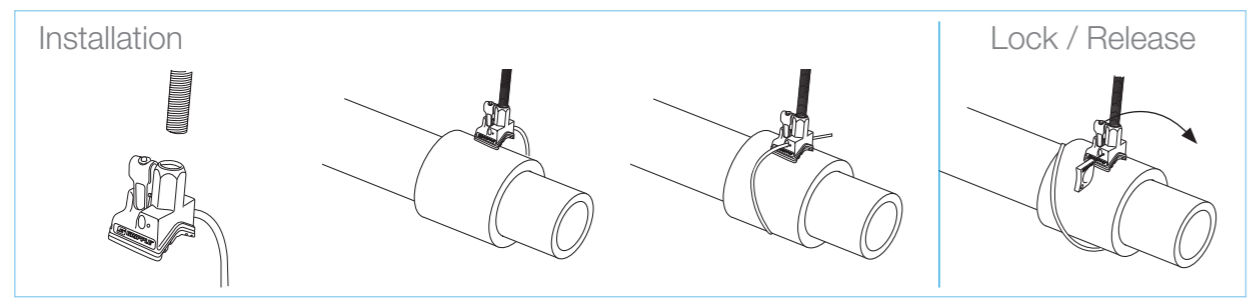


Armaflex®



ACCESSORIES - PAGE 73

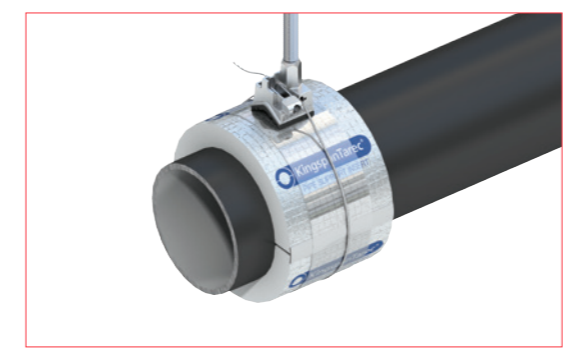
TECHNICAL - PAGE 83



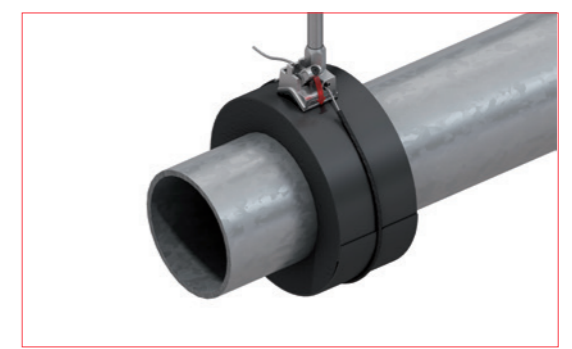
Pipe Insulation Collar Codes

How to work out your unique product code

1 CHOOSE YOUR INSULATION



Kooltherm
GKT-PS



Armaflex
GAF-PS

2 CHOOSE YOUR OUTSIDE PIPE DIAMETER (OD MM)

15	21	22	27	28	34	35
42	54	60	67	76	89	

3 CHOOSE YOUR INSULATION THICKNESS (MM)

KOOLTHERM

15	20	25	30	40	50
----	----	----	----	----	----

ARMAFLEX

19	25	32
----	----	----

Enter your unique product code (e.g. GKT-PS-27-40):

						-			-		
INSULATION								PIPE DIAMETER		INSULATION THICKNESS	

For more details on available combinations and further product information please call 0800 0184 264 or visit our website www.gripple.com for further details.

Thru-In-1[®] Sleeving System

The Gripple[®] Thru-in-1[®] Sleeving System combines the functionality of a masonry drill with new technology to simplify the process of passing cables or pipes through cavity walls.

- Reduced installation time - integrated system allows single operation to drill and insert sleeve, enabling pipework and multiple cables to be installed within seconds
- Secure installation - sleeve compacts and locks on entry to create a clear passage for service installs
- Low cost - reduces sleeve material costs
- Differentiated hole size - black sleeve 22 mm, yellow sleeve 28 mm
- 28 mm yellow sleeve is UK Gas regulation compliant. Specifically designed for gas engineers and meets all current legislation
- Damage protection - safeguard all services within the wall
- Ready-to-use sleeves - 22 mm Starter Pack contains 500 mm SDS drill bit and 25 x (225 mm) rigid sleeves. 28 mm Starter Pack contains 540 mm SDS drill bit and 25 x (345 mm) rigid sleeves, negating need to cut sleeves on-site
- Versatility - sleeves pipe up to $\varnothing 22$ mm or multiple cables up to $\varnothing 16$ mm
- Multi-purpose - high performance 22 mm and 28 mm carbide drill bit specifically designed for use with Thru-in-1 but also operates as standard drill bit



SDS+ Drill Bit

High grade carbide tipped drill bit with unique top hat guide, offering increased penetration and efficiency across multiple material types.



The Thru-in-1[®] drill bit is custom designed and manufactured by innovative, market-leading drilling and tool solutions provider, Armeg – a company with over 40 years of experience in solving application specific drilling problems.



Thru-In-1[®] Order Codes

Choose your product code from the tables below to place an order with our specialist sales team.

28 mm Sleeve



22 mm Sleeve



28 mm Product	Product Code
25 Sleeve & Drill Bit Starter Pack	TI1-28-STARTER
25 Sleeve Refill Pack	TI1-28-REFILL
Replacement Top Hat	TI1-28-TOPHAT

22 mm Product	Product Code
25 Sleeve & Drill Bit Starter Pack	TI1-22-STARTER
25 Sleeve Refill Pack	TI1-22-REFILL
Replacement Top Hat	TI1-22-TOPHAT

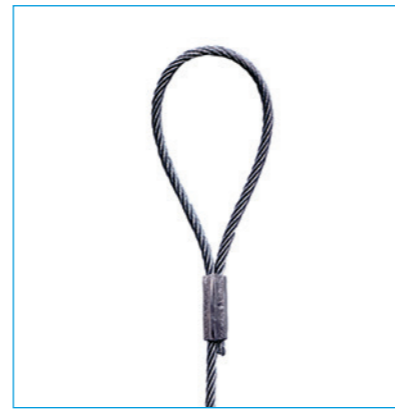


End Fixings

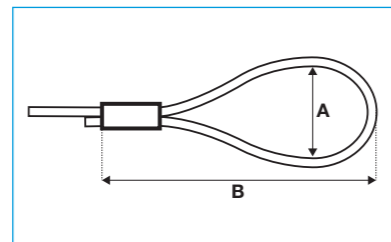
Loop & Stud	page 58
Toggle & Snap Hook	page 59
Mini Hook & End Stop	page 60
Barrel & Top Hat	page 61
Magnetic Pad & Eyelet	page 62
45° Eyelet & 90° Eyelet	page 63
Cladding Hook & Ring Anchor	page 64
Ceiling Anchor & Link Hook	page 65
Karabiner & C-Clip	page 66
Shot Fire & Channel Nut	page 67
25 mm Wedge & Alphawedge	page 68
Multiwedge 2 & TR60 Wedge	page 69
MF Wedge & Twist Clip (White)	page 70
Metal Deck Insert & Spider	page 71

Loop

- Hanger using a non-invasive, simple, choke knot technique. No need for nuts, bolts, clamps or other accessories
- Available up to 325 kg SWL, with up to a 5:1 safety factor
- Comes as a ready-to-use kit with Gripple wire rope and hanger
- Available in lengths of 1 m - 10 m
- Available in Stainless Steel



Available Hangers



Size	A (mm) Indicative	B (mm) Indicative
No.1 (0 - 10 kg)	30	60
No.2 (10 - 45 kg)	30	60
No.3 (45 - 90 kg)	25	60
No.4 (90 - 225 kg)	45	85
No.5 (225 - 325 kg)	45	90

Installation

Ensure a minimum 75 mm of tail wire exit the hanger.

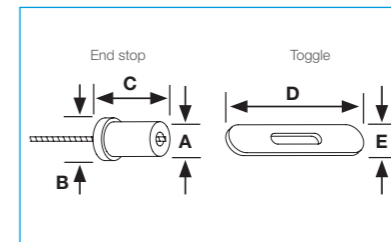
Install fixings in accordance with manufacturer's specifications.

Toggle

- Ideal when used as a Y-Fit to suspend lighting
- Available up to 90 kg SWL, with up to a 5:1 safety factor
- Comes as a complete kit with Gripple wire rope and hanger
- Available in Stainless Steel



Available Hangers



Installation

Size	A Ø (mm)	B Ø (mm)	C (mm)	D (mm)	E (mm)
No.1 (0 - 10 kg)	4.2	5.9	8	40	5.8
No.2 (10 - 45 kg)	6.2	7.9	12	40	7.8
No.3 (45 - 90 kg)	6.2	9.9	18	40	9.7

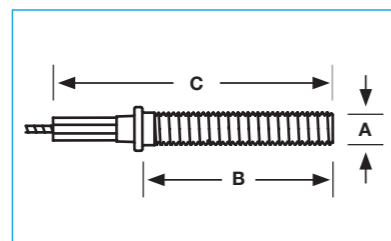
Install fixings in accordance with manufacturer's specifications.

Stud

- Supplied with Drop-in Anchors (as standard) or nuts as required
- Available in M6, M8 and M10, up to 225 kg SWL, with up to a 5:1 safety factor
- Supplied as a ready-to-use kit with Gripple wire rope and hanger
- Available in lengths from 1 - 10 m
- Other lengths are available on request
- Also available in Stainless Steel and fire rated kits with Trapeze Plus No.3
- Fire rated version available



Available Hangers



Size	A	B (mm)	C (mm)
No.1 (0 - 10 kg)	M6	20	48
No.2 (10 - 45 kg)	M6	20	48
	M8	45	70
	M10	45	77
No.3 (45 - 90 kg)	M6	20	48
	M8	45	70
	M10	45	77
No.4 (90 - 225 kg)	M10	45	77

Installation

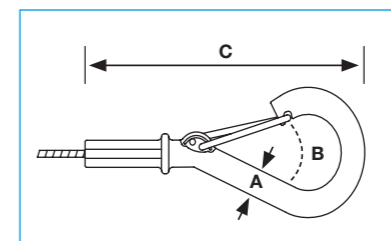
Install fixings in accordance with manufacturer's specifications.

Snap Hook

- Quick and easy attachment to cable basket, purlin clips, light fittings
- Available up to 90 kg SWL, with up to a 5:1 safety factor
- Comes as a ready-to-use kit with Gripple wire rope and hanger
- Available in lengths from 1 - 10 m
- Other lengths are available on request



Available Hangers



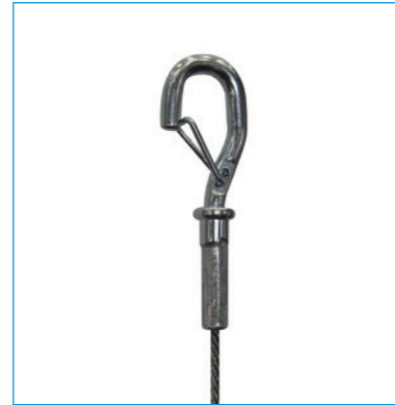
Installation

Size	A (mm)	B (mm)	C (mm)
No.1 (0 - 10 kg)	6,3	7	75
No.2 (10 - 45 kg)	6,3	7	75
No.3 (45 - 90 kg)	6,3	7	75

Install fixings in accordance with manufacturer's specifications.

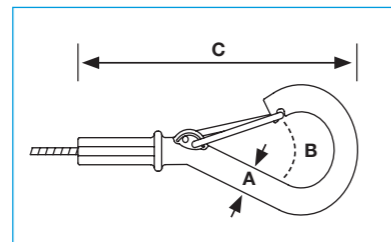
Mini Hook

- Ideal for services that require access or maintenance, such as cable tray and cable basket, especially when used as a Y-Fit
- Available up to 15 kg SWL, with a 5:1 safety factor
- Comes as a ready-to-use kit with Gripple wire rope and hanger
- Standard lengths 1 m - 10 m
- Other lengths are available upon request



Available Hangers

Page 30 Page 31 Page 32



Size	A (mm)	B (mm)	C (mm)
No.1 (0 - 10 kg)	4.5	5	55

Installation

Install fixings in accordance with manufacturer's specifications.

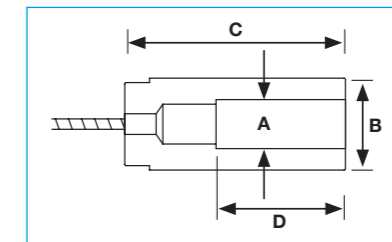
Barrel

- Ideal for use on signage, or exposed services, such as retail and office environments
- Available up to 90 kg SWL, with up to a 5:1 safety factor
- Comes as a ready-to-use kit with Gripple wire rope and hanger
- Available in lengths from 1 - 10 m



Available Hangers

Page 30 Page 31 Page 32 Page 36
Page 37 Page 38 Page 39 Page 40



Size	A (mm)	B (mm)	C (mm)	D (mm)
No.1 (0 - 10 kg)	M6	12	45	26
No.2 (10 - 45 kg)	M6 and M8	12	45	26
No.3 (45 - 90 kg)	M8	12	45	26

Installation

Install fixings in accordance with manufacturer's specifications.

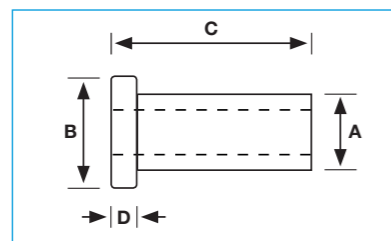
End Stop

- Simple, fast installation for extruded profiles
- Available up to 90 kg SWL, with up to a 5:1 safety factor
- Comes as a complete kit with Gripple wire rope and hanger
- For use with No.1 - No.3 Gripple hangers



Available Hangers

Page 30 Page 31 Page 32 Page 36
Page 37 Page 38 Page 39 Page 40



Size	A (mm)	B (mm)	C (mm)	D (mm)
No.1 (0 - 10 kg)	4.2	5.7	9	2
No.2 (10 - 45 kg)	6.2	7.8	13.8	2
No.3 (45 - 90 kg)	6.2	9.8	19	2.8

Installation

Install fixings in accordance with manufacturer's specifications.

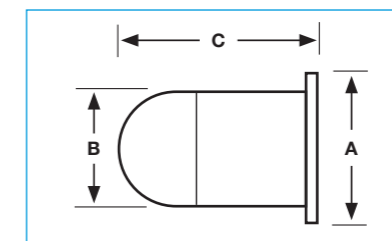
Top Hat

- Aesthetic fixing for use with a wide range of Gripple hangers
- Ideal when lighting/services are exposed
- Available up to 45 kg SWL with up to a 5:1 safety factor
- Two part construction for fast installation using M6 or Ø4.5 mm c/sunk screws
- Supplied as a ready-to-use kit with Gripple wire rope and hanger



Available Hangers

Page 30 Page 31 Page 32 Page 36
Page 37 Page 38 Page 39 Page 40



Size	A (mm)	B (mm)	D (mm)
No.1 (0 - 10 kg)	18	14	26
No.2 (10 - 45 kg)	18	14	26

Installation

Fix using M6 or Ø4.5 mm c/sunk screw.

Install fixings in accordance with manufacturer's specifications.

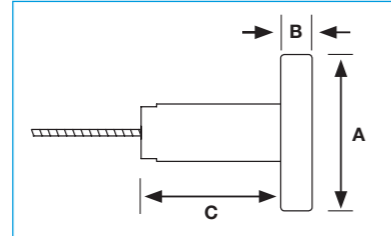
Magnetic Pad

- Ideal for hanging signage and fixing services to ferrous metal surfaces
- Available up to 8 kg SWL, with a 2:1 safety factor
- Load is affected by the metal thickness and surface condition (painted finish)
- Not for use on aluminium, brass or non-metallic products
- Comes as a ready-to-use kit with Gripple wire rope and hanger

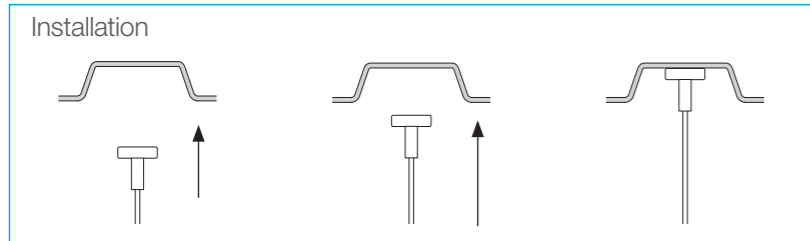


Available Hangers

Page 30 Page 31 Page 32



Size	A (mm)	B (mm)	C (mm)
No.1 (0 - 10 kg)	25	8	45



Install fixings in accordance with manufacturer's specifications.

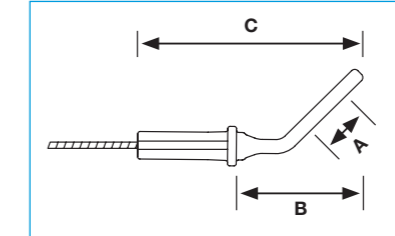
45° Eyelet

- Ideal for use in bracing applications
- Available up to 90 kg SWL, with up to a 5:1 safety factor
- Comes as a ready-to-use kit with Gripple wire rope and hanger

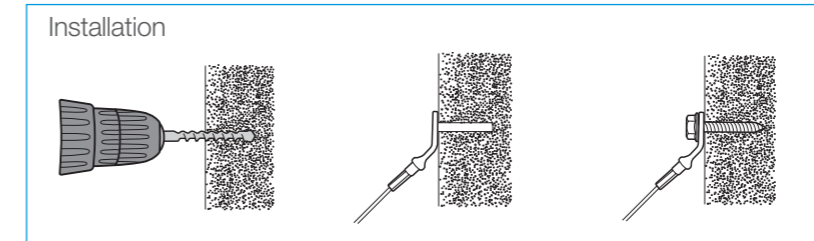


Available Hangers

Page 30 Page 31 Page 32 Page 36
Page 37 Page 38 Page 39 Page 40



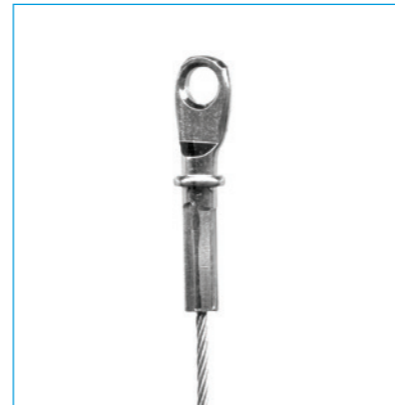
Size	A (mm)	B (mm)	C (mm)
No.2 (0 - 45 kg)	11.2	29	52
No.3 (45 - 90 kg)	11.2	29	52



Install fixings in accordance with manufacturer's specifications.

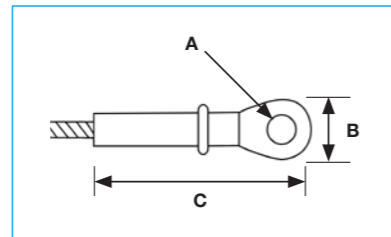
Eyelet

- Available up to 90 kg SWL, with up to a 5:1 safety factor
- Comes as a ready-to-use kit with Gripple wire rope and hanger
- Fire Rated version available

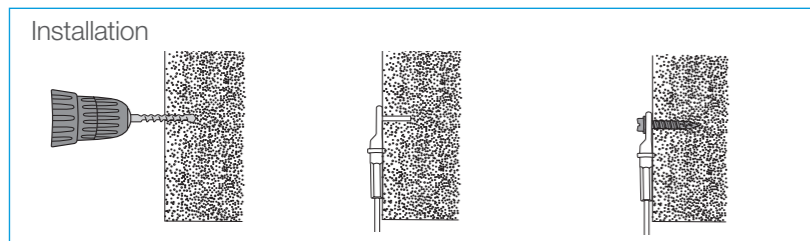


Available Hangers

Page 30 Page 31 Page 32 Page 36
Page 37 Page 38 Page 39 Page 40



Size	A (mm)	B (mm)	C (mm)
No.1 (0 - 10 kg)	6.2	7.7	12
No.2 (10 - 45 kg)	6.2	7.7	12
No.3 (45 - 90 kg)	6.2	9.7	18



Install fixings in accordance with manufacturer's specifications.

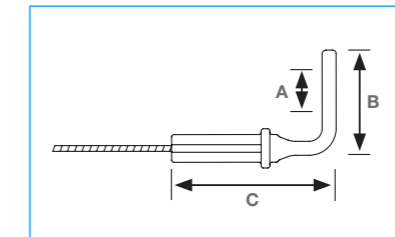
90° Eyelet

- Ideal for use with Gripple concrete screws for direct soffit mounting
- Available up to 90 kg SWL, with up to a 5:1 safety factor
- Comes as a ready-to-use kit with Gripple wire rope and hanger
- Fire Rated version available

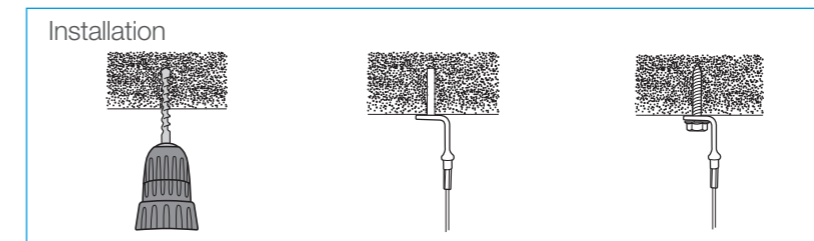


Available Hangers

Page 30 Page 31 Page 32 Page 36
Page 37 Page 38 Page 39 Page 40



Size	A (mm)	B (mm)	C (mm)
No.1 (0 - 10 kg)	7.5	25	38
No.2 (10 - 45 kg)	7.5	25	38
No.3 (45 - 90 kg)	7.5	25	38

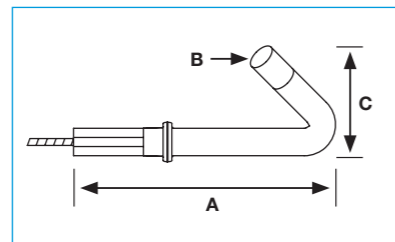


Install fixings in accordance with manufacturer's specifications.

Cladding Hook

- Designed to fit 6 mm holes
- Suitable for every grade of steel
- Comes as a ready-to-use kit with Gripple wire rope and hanger
- Creates a secure hanger
- Safe working load may vary dependent on the thickness of steel to which it is attached

Available Hangers



Size	A (mm)	B (mm)	C (mm)
No.2 (0 - 45 kg)	59	5	24



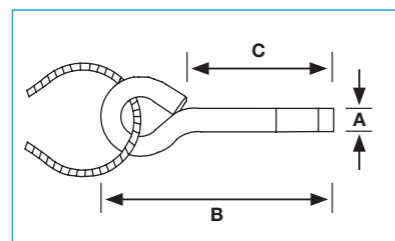
Installation

Install fixings in accordance with manufacturer's specifications.

Ring Anchor

- Ideal for fixing into concrete and cracked concrete
- Shallow anchorage depth of 25 mm
- Available up to 45 kg SWL, with a 3:1 safety factor
- Comes as a ready-to-use kit with Gripple wire rope and hanger
- Available in lengths from 1 - 10 m
- Other lengths are available on request

Available Hangers



Size	A (mm)	B (mm)	C (mm)
No.1 (0 - 10 kg)	6	54	35
No.2 (10 - 45 kg)	6	54	35



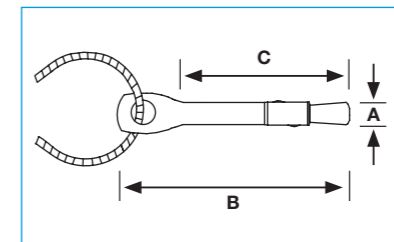
Installation

Install fixings in accordance with manufacturer's specifications.

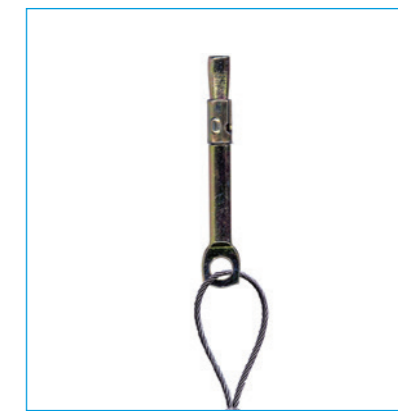
Ceiling Anchor

- Ideal for fixing Gripple hangers into concrete
- Knock into a pre-drilled hole, pull with a claw hammer to set
- Available up to 45 kg SWL, with a 3:1 safety factor
- Comes as a ready-to-use kit with Gripple wire rope and hanger
- Available in lengths from 1 - 10 m
- Other lengths are available on request

Available Hangers



Size	A (mm)	B (mm)	C (mm)
No.1 (0 - 10 kg)	6	65	50
No.2 (10 - 45 kg)	6	65	50



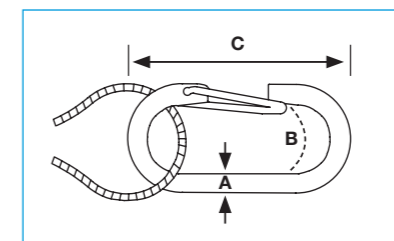
Installation

Install fixings in accordance with manufacturer's specifications.

Link Hook

- Ideal for use with cable tray
- Available up to 45 kg SWL, with up to a 4:1 safety factor
- Comes as a ready-to-use kit with Gripple wire rope and hanger
- Available in lengths from 1 - 10 m
- Other lengths are available on request

Available Hangers



Size	A (mm)	B (mm)	C (mm)
No.1 (0 - 10 kg)	6	15	48
No.2 (10 - 45 kg)	6	15	48



Installation

Install fixings in accordance with manufacturer's specifications.

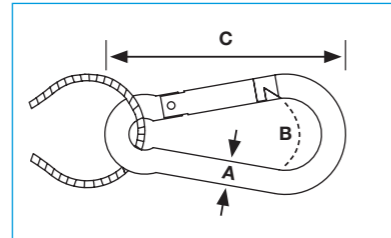
Karabiner

- Provides 9 mm clearance
- Available up to 90 kg SWL, with up to a 5:1 safety factor
- Comes as a ready-to-use kit with Gripple wire rope and hanger
- Available in lengths from 1 to 10 m
- Other lengths are available on request
- Available in Stainless steel (page ?)



Available Hangers

Page 30 Page 31 Page 32 Page 36
Page 37 Page 38 Page 39 Page 40



Size	A (mm)	B (mm)	C (mm)
No.1 (0 - 10 kg)	6	10	60
No.2 (10 - 45 kg)	6	10	60
No.3 (45 - 90 kg)	8	10	80

Installation

Install fixings in accordance with manufacturer's specifications.

Shot Fire

- Six times faster than traditional methods (drilling and anchoring)
- Can be used with gas and powder fastening tools (DX460)
- Quick and easy fastening solution
- Supplied as a ready-to-use kit
- Available in two sizes up to 45 kg load
- Available in lengths from 1 to 3 m (other lengths available on request)



Available Hangers

Page 30 Page 31 Page 32 Page 36
Page 37 Page 38 Page 39 Page 40



Nail Clip	Shank diameter (mm)	Shank length (mm)	Head diameter (mm)	Plastic washer diameter (mm)
DX351	3.7	27	8.15	8
P370E	4.0	22	8.78	8.8

Installation

Install fixings in accordance with manufacturer's specifications.

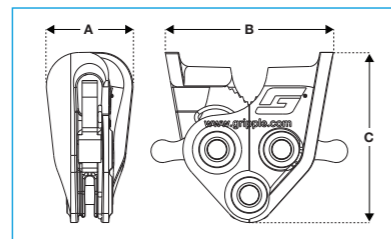
C-Clip

- Up to 10 times faster to install
- Allows horizontal and vertical adjustment
- Cams lock solidly in place even at angles up to 60°
- 3 mm and 6 mm versions available
- Available up to 45 kg SWL with up to a 5:1 safety factor
- Comes as a ready-to-use kit with Gripple wire rope and hanger
- Can be retrofitted
- One handed installation, no tools required
- Designed for use with Gripple Catenary Kits



Available Hangers

Page 30 Page 31 Page 32 Page 36
Page 37 Page 38 Page 39 Page 40



Size	A (mm)	B (mm)	C (mm)
3 mm C-Clip	12	26	33
6 mm C-Clip	23	45	45

Installation

Install fixings in accordance with manufacturer's specifications.

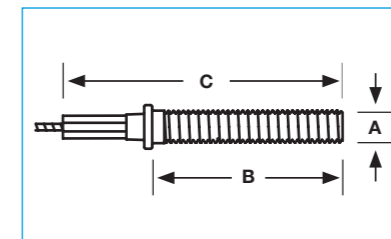
Channel Nut

- Fast to install
- Pre-assembled and ready-to-insert
- Fits directly into the channel
- Available up to 90 kg SWL with up to a 5:1 safety factor
- Fits both 41 x 41 and 41 x 21 channel
- Ideal for common rail installations
- Ideal for multi-tier installations
- No additional components required



Available Hangers

Page 30 Page 31 Page 32 Page 36
Page 37 Page 38 Page 39 Page 40



Size	A Ø	B (mm)	C (mm)
No.2 (0 - 45 kg)	M8	45	70
No.3 (45 - 90 kg)	M8	45	70

Installation

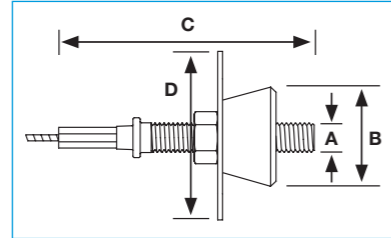
Install fixings in accordance with manufacturer's specifications.

Decking Wedge

- 25 mm version designed for use with SMD R51, Comflor 51, Holorib, Multideck 50 and Metfloor 55
- 18 mm version designed for use with Ribdeck S60 and Ribdeck 80
- Available up to 90 kg SWL
- Available in 18 mm and 25 mm sizes
- Comes as a ready-to-use kit with Gripple wire rope and hanger
- Other lengths are available on request
- No need for drilling, specialist tools or skills

Available Hangers

Page 30 Page 31 Page 32 Page 36
Page 37 Page 38 Page 39 Page 40



25 mm Wedge

Size	A	B (mm)	C (mm)	D (mm)
No.2 (0 - 45 kg)	M8	25	70	40
No.3 (45 - 90 kg)	M8	25	70	40

18 mm Wedge

Size	A	B (mm)	C (mm)	D (mm)
No.2 (0 - 45 kg)	M8	18	70	40
No.3 (45 - 90 kg)	M8	18	70	40

Installation

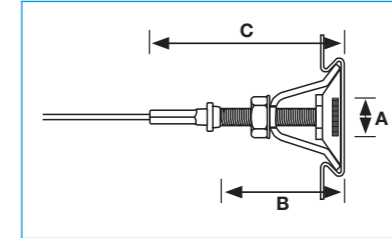
Install fixings in accordance with manufacturer's specifications.

Multiwedge 2

- Designed for use with Kingspan Multideck 60 and 80
- Adjustable and removable, no need for drilling, specialist tools or skills
- Available up to 90 kg SWL
- Comes as a ready-to-use kit with Gripple wire rope and hanger

Available Hangers

Page 30 Page 31 Page 32 Page 36
Page 37 Page 38 Page 39 Page 40



Size	A Ø	B (mm)	C (mm)
No.2 (0 - 45 kg)	M8	45	70
No.3 (45 - 90 kg)	M8	45	70

Installation

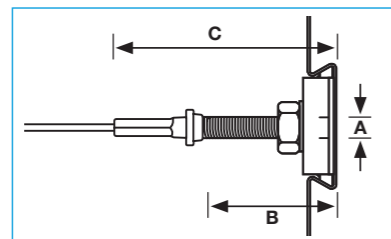
Install fixings in accordance with manufacturer's specifications.

Alphawedge

- Designed for use with Ribdeck E60
- Adjustable and removable, no need for drilling specialist tools or skills
- Available up to 90 kg SWL
- Comes as a ready-to-use kit with Gripple wire rope and hanger

Available Hangers

Page 30 Page 31 Page 32 Page 36
Page 37 Page 38 Page 39 Page 40



Size	A Ø	B (mm)	C (mm)
No.2 (0 - 45 kg)	M8	45	70
No.3 (45 - 90 kg)	M8	45	70

Installation

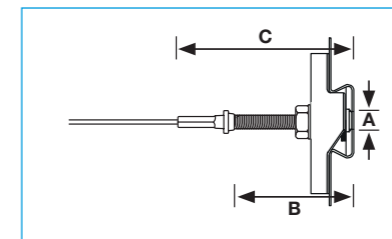
Install fixings in accordance with manufacturer's specifications.

TR60 Wedge

- Designed for use with Structural Metal Decks TR60+ and TR80+
- Adjustable and removable, no need for drilling, specialist tools or skills
- Available up to 90 kg SWL
- Comes as a ready-to-use kit with Gripple wire rope and hanger

Available Hangers

Page 30 Page 31 Page 32 Page 36
Page 37 Page 38 Page 39 Page 40



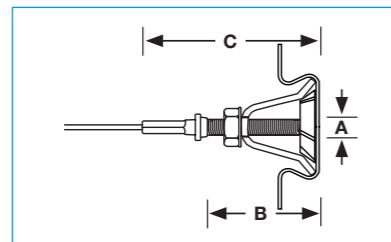
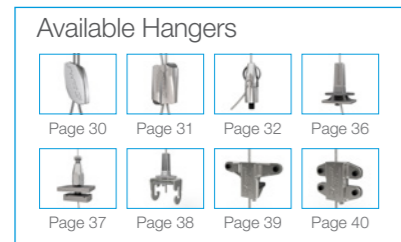
Size	A Ø	B (mm)	C (mm)
No.2 (0 - 45 kg)	M8	45	70
No.3 (45 - 90 kg)	M8	45	70

Installation

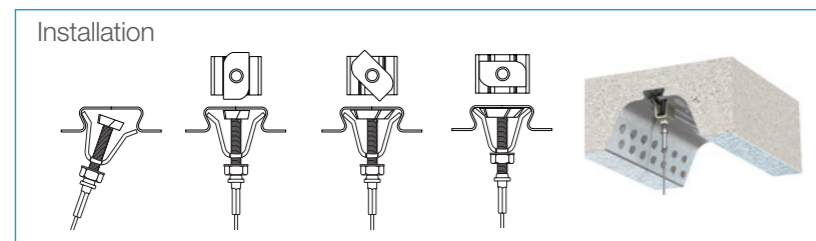
Install fixings in accordance with manufacturer's specifications.

MF Wedge

- Ideal for fixing into Metfloor® 60 and 80 profiles manufactured by Composite Metal Flooring
- The only fixing recommended by the decking manufacturer
- Load rated at 90 kg SWL
- Comes as a ready-to-use kit with Gripple wire rope and hanger



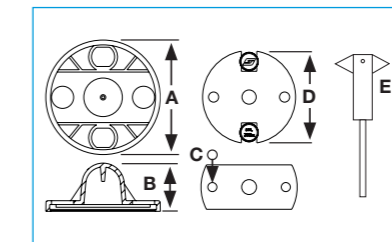
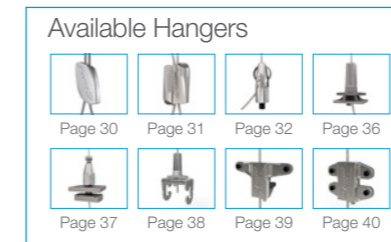
Size	A Ø	B (mm)	C (mm)
No.2	M8	45	70
No.3	M8	45	70



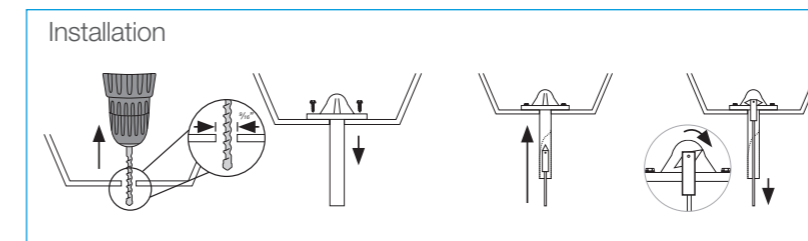
Install fixings in accordance with manufacturer's specifications.

Metal Deck Insert

- Specifically designed to pre-install anchor points into metal decks prior to the concrete being poured
- Rubber head prevents the entry hole from being blocked with concrete and saves time required to clean the entry hole
- Tube allows for easy insertion of end fixings (Stud or Toggle)
- Accommodates either No.2 or No.3 size Standard Hanger
- Supplied as a ready-to-use kit which includes the Metal Deck Insert, Gripple Hanger and a Swivel Toggle End Fixing
- Threaded version (TDI) is also available for use with a Stud End Fixing



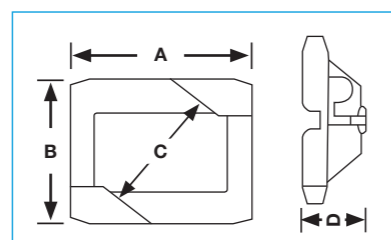
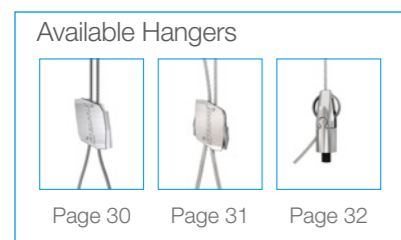
A (mm)	B (mm)	C Ø	D (mm)	E (mm)
59.4	25	5.2	55	38.1



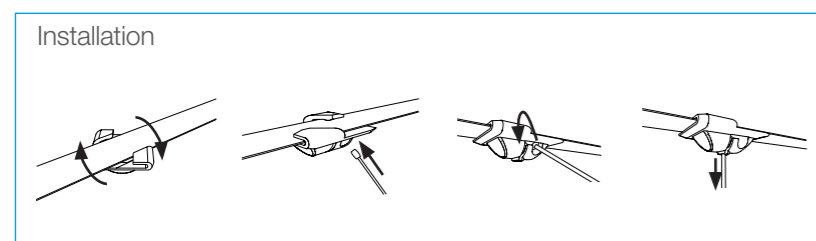
Install fixings in accordance with manufacturer's specifications.

Twist Clip (White)

- Designed for use on 24 mm T-Bar grid ceilings
- Quicker manufacture and installation times
- Ideal for use with the Angel range
- Quick and easy to install - no tools required
- Visually discreet and lightweight
- Can be retrofitted
- Will not cause damage to the T-Bar grid
- Available as part of a ready-to-use kit or in bulk as an accessory



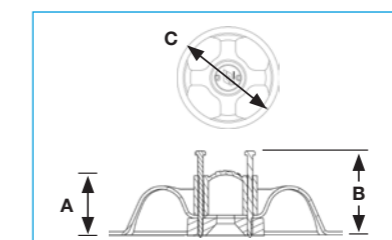
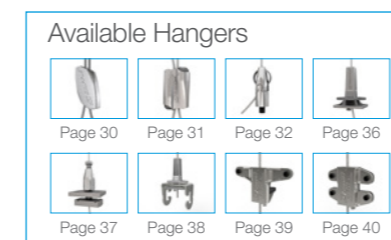
A (mm)	B (mm)	C (mm)	D (mm)
40	32	24	15



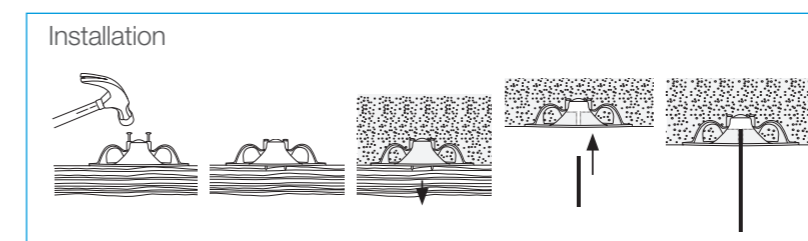
Install fixings in accordance with manufacturer's specifications.

Spider

- Specifically designed to pre-install anchor points into cast on-site concrete decks
- Robust construction copes with on-site conditions before, during, and after the concrete pour
- Various Spider colour options available, allowing contractors to easily identify their own inserts from below
- Supplied as a ready-to-use kit which includes a Gripple Hanger, and the Gripple Spider in either M8 or M10 thread size
- Toggle insert version is also available



A (mm)	B (mm)	C Ø (mm)
27	42	115



Install fixings in accordance with manufacturer's specifications.



Accessories

Anchoring Solutions	page 74
Beams & Purlins	page 76
Brackets & Attachments	page 77
Adaptors	page 78
Trapeze Accessories	page 80
Tools & Finishing Accessories	page 80

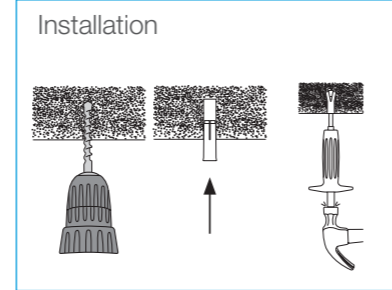
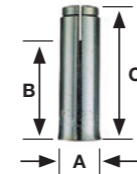
Anchoring Solutions

Drop-In Anchor

- Suitable for non-cracked concrete, precast hollow core concrete and hard natural stone
- Internal threaded anchor with flared end for easy setting



Page 81



3:1 Safety rating - load rating is dependant on base material

Product code	A	B (mm)	C (mm)	Max. SWL (kg)	Hole Ø (mm)	Min. Hole depth* (mm)	Anchorage depth* (mm)	Quantity
DPA-M6	M6	13	25	140	8	27	25	10
DPA-M8	M8	12	30	185	10	33	30	10
DPA-M10	M10	15	40	290	12	43	40	10

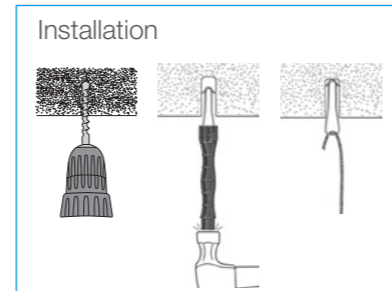
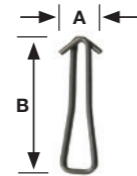
* For further information contact Gripple Technical Services

Concrete Wire Anchor

- Suitable for non-cracked concrete and hard natural stone
- Stainless steel (304/A2)
- CSTB test report



Page 81



3:1 Safety rating - load rating is dependant on base material

Product code	A (mm)	B (mm)	Max. SWL (kg)	Hole Ø (mm)	Min. Hole depth* (mm)	Min. Anchorage depth* (mm)	Quantity
WIRE-ANCHOR	15.3	50	45	8	30	30	100

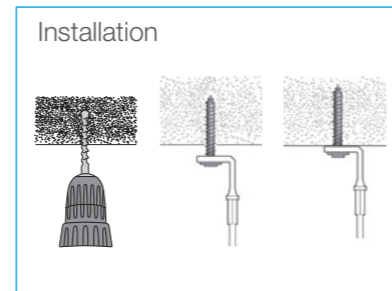
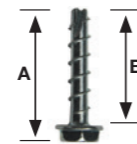
* For further information contact Gripple Technical Services

Concrete Screw

- Suitable for cracked and non cracked concrete
- Ideal for use with the 90° Eyelet End Fixing (page 63)
- Removable



Page 81



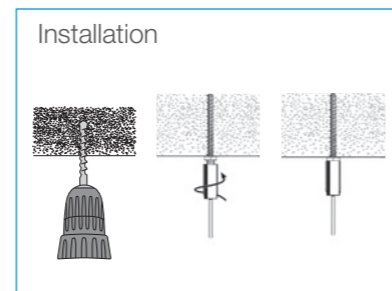
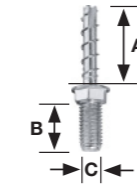
3:1 Safety rating - load rating is dependant on base material

Product code	A (mm)	B (mm)	Max. SWL (kg)	Hole Ø (mm)	Min. Hole depth* (mm)	Min. Anchorage depth* (mm)	Quantity
CCS45	47	40	170	6	45	25	100

* For further information contact Gripple Technical Services

Barrel Concrete Screw

- Suitable for cracked and non-cracked concrete, precast hollow concrete and hard natural stone
- Easy-fit screw with integrated male thread connection
- Ideal for use with the M8 Barrel End Fixing (page 61)
- Removable



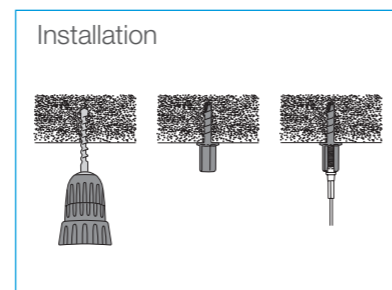
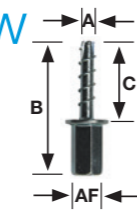
3:1 Safety rating - load rating is dependant on base material

Product code	A (mm)	B (mm)	C (mm)	Max. SWL (kg)	Hole Ø (mm)	Min. Hole depth* (mm)	Min. Anchorage depth* (mm)	Quantity
BCS45-M8	35	16	M8	170	6	40	25	100

* For further information contact Gripple Technical Services

Stud Cracked Concrete Screw

- Suitable for cracked and non cracked concrete
- Dual M8/M10 internal thread
- Ideal for use with the Stud End Fixing (page 58)
- Removable



3:1 Safety rating - load rating is dependant on base material

Product code	A (mm)	B (mm)	C (mm)	AF (mm)	Max. SWL (kg)	Hole Ø (mm)	Min. Hole depth* (mm)	Min. Anchorage depth* (mm)	Quantity
SCCS35	8	60	35	13	170	6	45	25	100

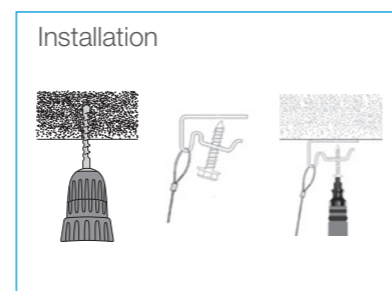
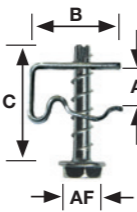
* For further information contact Gripple Technical Services

Ceiling Clip Concrete Screw

- Suitable for cracked and non-cracked concrete, precast hollow concrete and hard natural stone
- Allows for pivotal movement
- Ideal for use with the Loop End Fixing (page 58)



Page 81



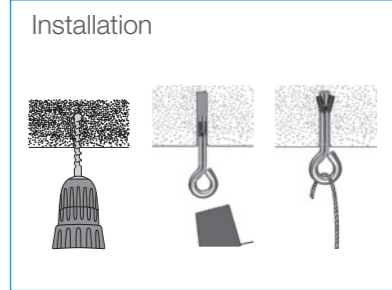
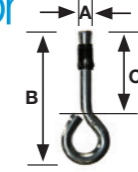
3:1 Safety rating - load rating is dependant on base material

Product code	A (mm)	B (mm)	C (mm)	AF (mm)	Max. SWL (kg)	Hole Ø (mm)	Min. Hole depth* (mm)	Min. Anchorage depth* (mm)	Quantity
CLIP-CS45	15	32	40	13	170	6	40	35	10

* For further information contact Gripple Technical Services

Cracked Concrete Ring Anchor

- Suitable for cracked and non cracked concrete
- Self-expanding anchor
- ETA approved



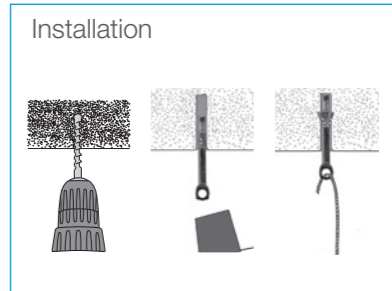
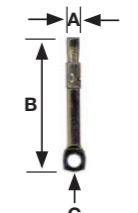
3:1 Safety rating - load rating is dependant on base material

Product code	A (mm)	B (mm)	C (mm)	Max. SWL (kg)	Hole Ø (mm)	Min. Hole depth* (mm)	Min. Anchorage depth* (mm)	Quantity
CCRA6	6	54	31	57	6	35	25	100

* For further information contact Gripple Technical Services

Concrete Ceiling Anchor

- Suitable for non-cracked concrete and hard natural stone
- Knock into a pre-drilled hole and pull with a claw hammer to set
- Ideal for use with the Standard Hanger (page 30)



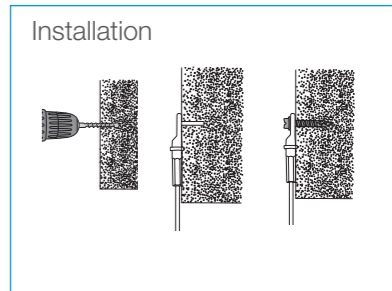
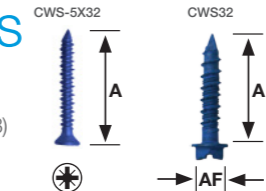
3:1 Safety rating - load rating is dependant on base material

Product code	A (mm)	B (mm)	C Ø (mm)	Max. SWL (kg)	Min. Hole depth* (mm)	Min. Anchorage depth* (mm)	Quantity
CWH6	6	60	6.2	45	43	25	100

* For further information contact Gripple Technical Services

Concrete Wood Screws

- Easy-fit screw suitable for wood, non-cracked concrete, precast hollow concrete and hard natural stone
- Ideal for use with the range of 90° Eyelet End Fixings (page 63)
- Removable



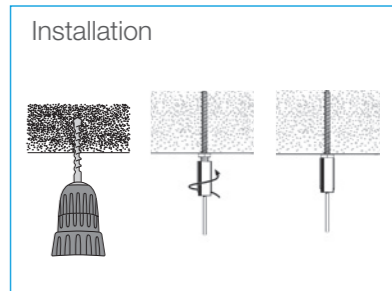
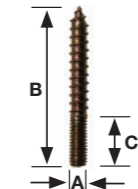
3:1 Safety rating - load rating is dependant on base material

Product code	A (mm)	AF (mm)	Max. SWL (kg)	Hole Ø (mm)	Min. Hole depth* (mm)	Min. Anchorage depth* (mm)	Quantity
CWS-5X32	32	-	100	4	35	25	100
CWS32	32	8	100	5	35	25	100

* For further information contact Gripple Technical Services

Barrel Wood Screw

- Easy-fit wood screw with integrated M6 thread connection
- Ideal for use with the M6 Barrel End Fixing (page 61)



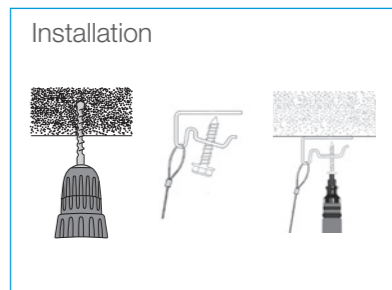
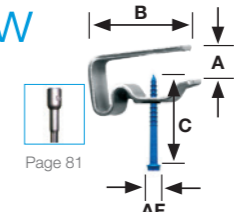
SWL - load rating is dependent on wood type

Product code	A (mm)	B (mm)	C (mm)	Max. SWL (kg)	Hole Ø (mm)	Hole depth* (mm)	Min. Anchorage depth* (mm)	Quantity
BWS35-M6	M6	50	15	N/A	4.5	40	35	100

* For further information contact Gripple Technical Services

Ceiling Clip Wood Screw

- Designed for screwing into wood
- Allows for pivotal movement
- Ideal for use with the Loop End Fixing (page 58)



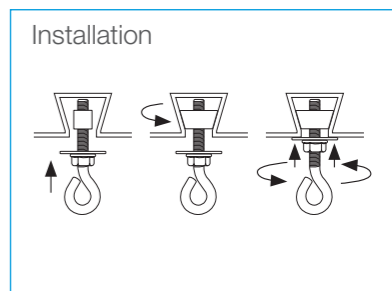
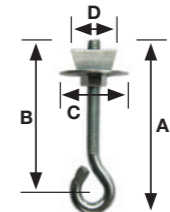
SWL - load rating is dependent on wood type

Product code	A (mm)	B (mm)	C (mm)	AF (mm)	Max. SWL (kg)	Hole Ø (mm)	Hole depth* (mm)	Min. Anchorage depth* (mm)	Quantity
CLIP-CWS32	15	32	32	8	N/A	5	40	25	10

* For further information contact Gripple Technical Services

M8 Decking Adaptors

- Ideal for use with the Y-Fit and Y-Fit Accessory (page 42)
- M8 thread with 12 mm diameter eye
- Can be combined with other decking fixings: Alphawedge, MF Wedge, Multiwedge 2 and TR60 (pages 68 - 70)



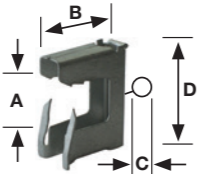
3:1 Safety rating

Product code	A (mm)	B (mm)	C (mm)	D (mm)	Max. SWL (kg)	Quantity
ADP-M8-W25	96	80	18	25	90	10

Beams & Purlins

Tiger Clip

- Hammer-on installation
- Accommodates a wide variety of flange thicknesses
- Ideal for use with the Snap Hook End Fixing (page 59)

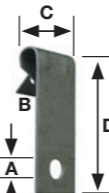


3:1 Safety rating

Product code	A (mm)	B (mm)	C (mm)	D (mm)	Max. SWL (kg)	Quantity
TIGERCLIP-28	2-8	30	6.7	30	56	100
TIGERCLIP-816	8-16	32	6.7	38	56	100

Vertical Flange Clip

- Hammer-on installation
- Two sizes available to suit 1 mm - 5 mm and 5 mm - 7 mm flange thickness
- Ideal for use with the Snap Hook End Fixing (page 59)

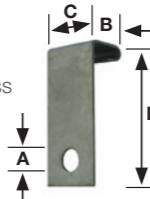


3:1 Safety rating

Product code	A (mm)	B (mm)	C (mm)	D (mm)	Max. SWL (kg)	Quantity
GCVF15	6.5	1-5	19	39	33	100
GCVF57	6.5	5-7	19	40	33	100

Purlin Clip

- Easy installation - clip into place
- Available to suit 4 mm - 5 mm flange thickness
- Ideal for use with the Snap Hook End Fixing (page 59)

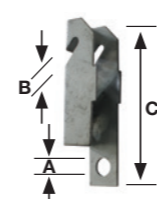


3:1 Safety rating

Product code	A (mm)	B (mm)	C (mm)	D (mm)	Max. SWL (kg)	Quantity
GCP45	6.5	15	19	45	9	100

Z Purlin Clip

- Hammer-on installation
- Available to suit 2.5 mm maximum flange thickness
- Ideal for use with the Snap Hook End Fixing (page 59)

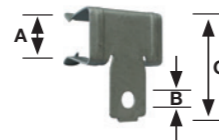


3:1 Safety rating

Product code	A (mm)	B (mm)	C (mm)	Max. SWL (kg)	Quantity
GCZP48	6.5	2.5	48	12	100

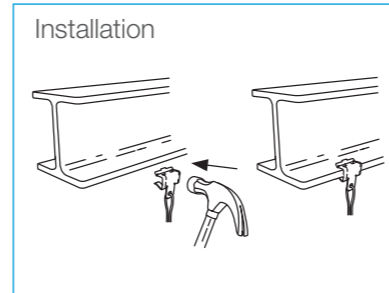
Beam Clip

- Hammer-on installation
- Accommodates a wide variety of flange thicknesses
- Ideal for use with the Snap Hook End Fixing (page 59)



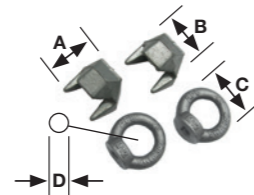
3:1 Safety rating

Product code	A (mm)	B (mm)	C (mm)	Max. SWL (kg)	Quantity
GCB24	2-4	6.5	21	32	100
GCB59	5-9	6.5	23	43	100
GCB1016	10-16	6.5	29	43	100
GCB1720	17-20	6.5	34	43	100



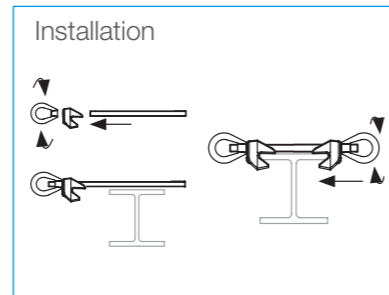
GF Bracket

- Designed for clamping onto an I-Beam section
- Suitable from 6 mm - 19 mm flange thicknesses
- Use with M12 threaded rod (not supplied)
- Ideal for use with Catenary Kits (page 44)



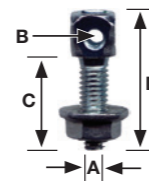
5:1 Safety rating

Product code	Beam Flange Thickness (mm)	A (mm)	B (mm)	C (mm)	D (mm)	Max. SWL (kg)	Quantity
GF12-EYENUT	6-13	46	47	55	30	340	1
GF16-EYENUT-12	8-16	62	62	55	30	340	1
GF20-EYENUT-12	10-19	75	75	55	30	340	1



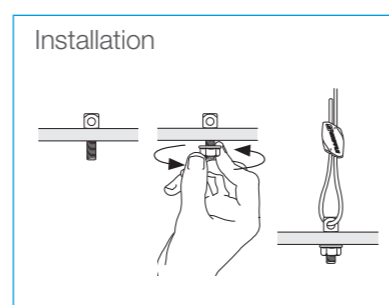
M6 & M8 Adaptor

- Ideal for fixings to many services such as luminaires
- Can be fixed into concrete using the Drop-In Anchors (page 74)
- Supplied with nut



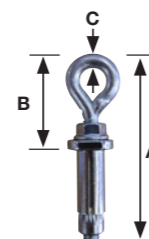
5:1 Safety rating - dependent on material

Product code	A	B (mm)	C (mm)	D (mm)	Max. SWL (kg)	Quantity
ADP-M6	M6	3.5	20	28	90	10
ADP-M8	M8	5.5	25	37	225	10



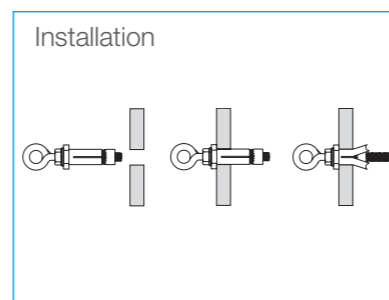
Catenary Steel Anchor

- Designed for blind fixing where only one side of beam is accessible
- Accommodates wide range of steel thickness (3-22 mm)
- Fast install into a 14 mm hole with 13 mm and 19 mm spanners
- Ideal for use with Catenary Kits (page 44)



5:1 Safety rating - dependent on material

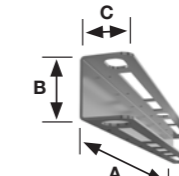
Product code	A (mm)	B (mm)	C (mm)	Max. SWL (kg)	Quantity
CAT-STEEL-ANCHOR	90	46	7	325	10



Brackets & Attachments

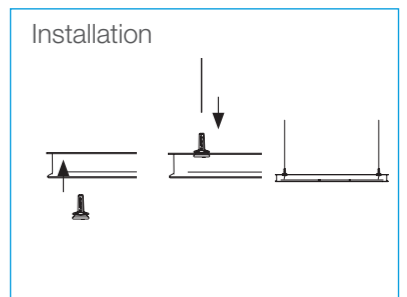
Universal Bracket

- Can be bolted directly to soffit or wall, or suspended from the soffit using threaded rod or Gripple Hanger e.g. Trapeze
- Eliminates the need for cutting channel on site
- Integrates with Trapeze No.2 and Y-Fit



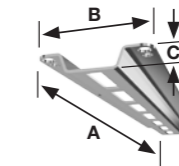
3:1 Safety rating

Product code	A (mm)	B (mm)	C (mm)	Max. SWL (kg) Between Fixings	Quantity
PB230	230	43	35	90	10
PB380	380	43	35	90	10
PB640	640	43	35	90	10
PB1020	1020	43	35	90	10
PB1200	1200	43	35	90	10



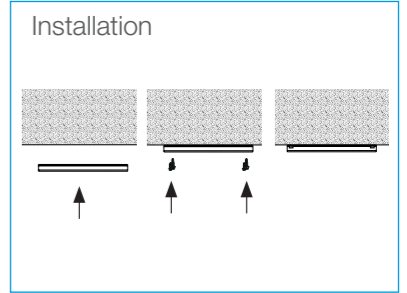
Low Profile Bracket

- Can be bolted directly to soffit or wall
- No "Hot Works" permit required, eliminating the need for cutting channel on site, allowing more productive use of labour



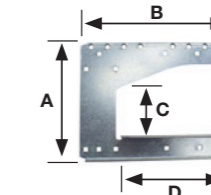
3:1 Safety rating

Product code	A (mm)	B (mm)	C (mm)	Max. SWL (kg) Between Fixings	Quantity
LPB180	180	78	14	45	10
LPB350	350	78	14	45	10
LPB650	650	78	14	45	10
LPB950	950	78	14	45	10
LPB1200	1200	78	14	45	10



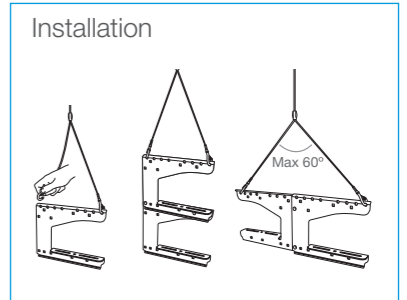
G-Bracket

- Purpose made for cable tray and basket
- Brackets can be easily joined together either vertically or horizontally to create a double fixing
- Ideal for use with the Y-Fit and Y-Fit Accessory (page 42)



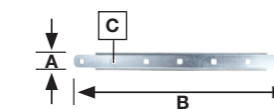
3:1 Safety rating

Product code	A (mm)	B (mm)	C (mm)	D (mm)	Max. SWL (kg)	Quantity
G-BRACKET-100	200	188	110	125	30	10
G-BRACKET-200	200	263	110	200	60	10
G-BRACKET-300	202	389	110	325	60	10
G-BRACKET-400	202	489	100	425	60	10



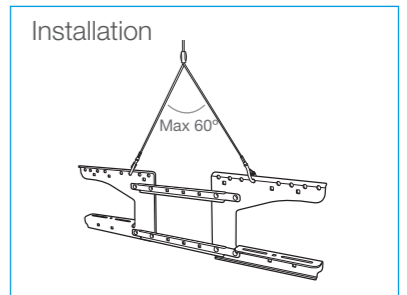
G-Spacer

- Joins two G-Brackets together, either vertically or horizontally allowing a central gap (max. 300 mm)
- Links different sizes of G-Bracket together
- Adjustable



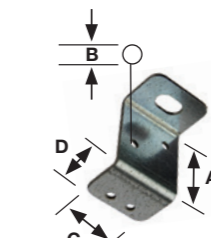
5:1 Safety rating

Product code	A (mm)	B (mm)	C (mm)	Quantity
G-SPACER	26	325	7x7	10



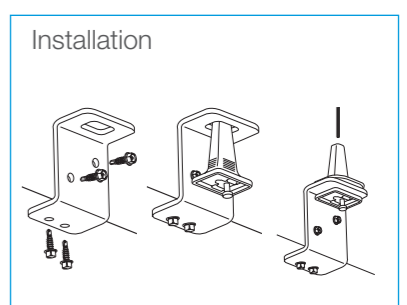
Trapeze Bracket

- Easily attached to rectangular ducting
- Replaces the need for threaded rod or channel support
- Rigid 2 mm steel thickness with galvanised finish
- Conforms to DW144 best practice
- Use with the Trapeze No.3 (page 36)



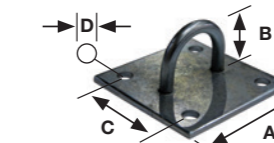
3:1 Safety rating

Product code	A (mm)	B (mm)	C (mm)	D (mm)	Max. SWL (kg)	Quantity
TPZ-BRACKET	48	5.0	38.5	25.5	90	10



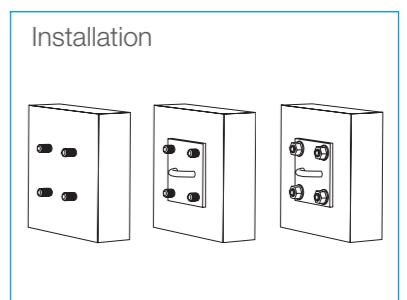
Catenary Wall Bracket

- 100 mm x 100 mm back plate for concrete walls and wooden beams
- 4 x 11 mm diameter mounting holes
- 65 mm hole spacing
- 9 mm ring for easy wire rope attachment
- Zinc plated finish (minimum 5 µ)



3:1 Safety rating

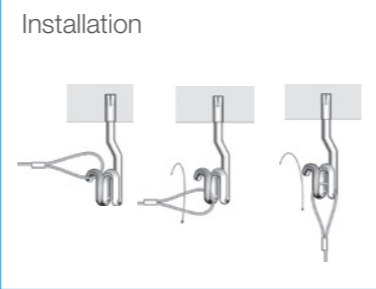
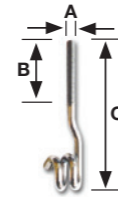
Product code	A (mm)	B (mm)	C (mm)	D (mm)	Max. SWL (kg)	Quantity
CAT-BRACKET-100	100	45	65	11	340	10



Adaptors

Pigtail

- Fast and secure anchor suitable for use with the Loop End Fixing (page 58)
- Ideal for use with the Drop-In Anchor (page 74)
- Allows Loop to be removed for maintenance

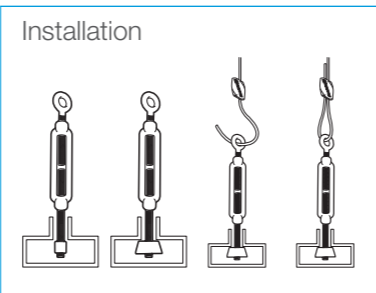
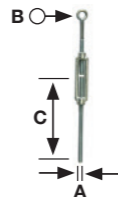


5:1 Safety rating - dependent on base material

Product code	A	B (mm)	C (mm)	Max. SWL (kg)	Quantity
PIGTAIL6-20MM	M6	20	76	90	10
PIGTAIL6-45MM	M6	45	102	90	10
PIGTAIL8-45MM	M8	45	118	150	10

Turnbuckle

- Ideal for cold room panels
- One end with closed-eye/one end with straight threaded rod
- Use with the Standard Hanger (page 30)

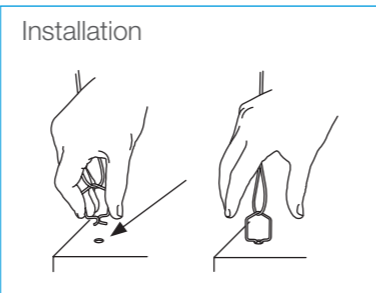
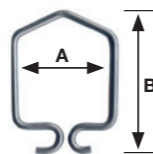


5:1 Safety rating - dependent on material

Product code	A	B (mm)	C (mm)	Max. SWL (kg)	Quantity
TBK8-R80	M8	14	80	325	10
TBK8-R200	M8	14	200	325	10
TBK10-R200	M10	14	200	325	10

Spring Clip

- Used for attaching to services such as trunking and lighting
- For 6 mm - 8 mm holes
- Ideal for use with the Standard Hanger (page 30)

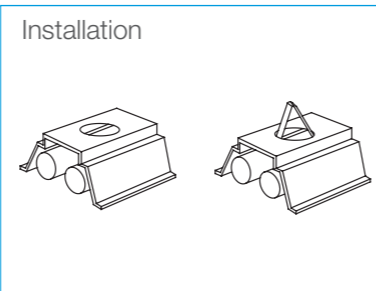
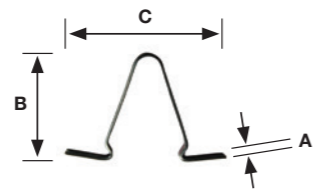


3:1 Safety rating - dependent on material thickness

Product code	A (mm)	B (mm)	Max. SWL (kg)	Quantity
CLIP-SPG-68	24	38	30	100

LSK Clip

- General purpose clip to support light fittings
- Steel with zinc plated finish

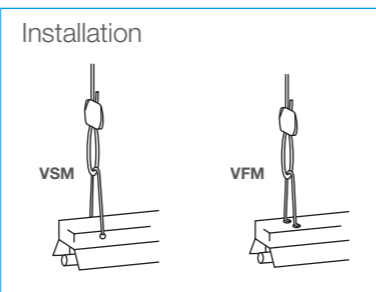
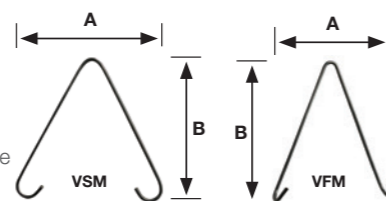


3:1 Safety rating

Product code	A (mm)	B (mm)	C (mm)	Max. SWL (kg)	Quantity
CLIP-LSK	8	35	51	3.8	100

V-Bracket

- Attaches to the top of light fittings
- Easily fits into mounting holes
- Steel with zinc plated finish
- In-line or right angled mounting hooks available

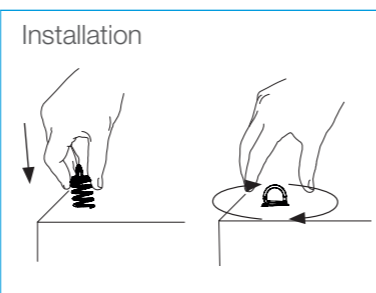
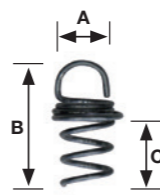


5:1 Safety rating

Product code	A (mm)	B (mm)	Max. SWL (kg)	Quantity
BRACKET-VSM	111	126	15	100
BRACKET-VFM	88	111	15	100

Acoustic Spring Anchor

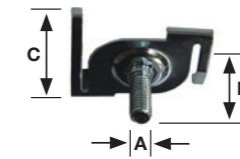
- Ideal for use with the Standard Hanger, Angel Hook or Express
- Available in standard (40 mm) and large size (70 mm) with 2 mm wire diameter
- No tools required for installation
- Sold as part of a kit call 0800 018 4264 for more information
- Maximum load ratings will vary. Contact Gripple Technical Services for more information



A (mm)	B (mm)	C (mm)	Kit Quantity
17	47	28	10
27	97	72	10

T-Bar Twist Clip

- Ideal for attaching to suspended ceilings
- Integral M6 thread
- Ideal for use with the Barrel End Fixing (page 61)
- Suitable for 25 mm T-Bar

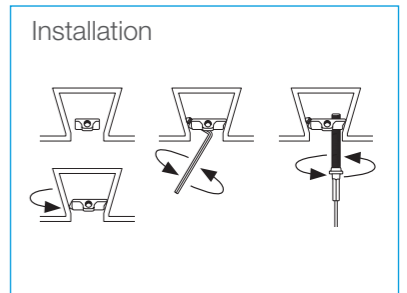
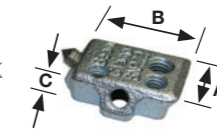


5:1 Safety rating

Product code	A	B (mm)	C (mm)	Max. SWL (kg)	Quantity
TBAR-CLIP-M6	M6	16	25	22	100

Uni-Wedge

- One universal fitting to fit many decking profiles available in the UK
- Ideal for use with the Stud End fixing (page 58)
- Suitable for: Kingspan Multideck 60 and 80
Richard Lees Ribdeck 80/AL and E60 SMD TR60 and TR80

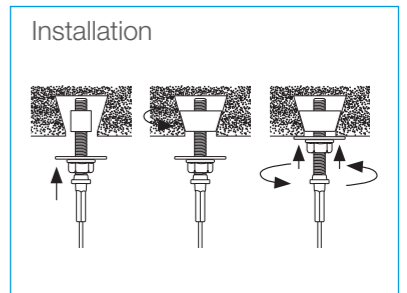
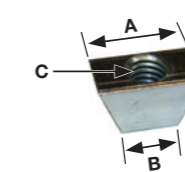


3:1 Safety rating

Product code	A (mm)	B (mm)	C (mm)	Max. SWL (kg)	Quantity
UNI-WEDGE	33	44	12.5	100	10

Wedge Nuts

- Ideal for use with the Stud End Fixing (page 58)
- Also supplied as a Decking Wedge End Fixing (page 68)
- Available in 18 mm and 25 mm sizes

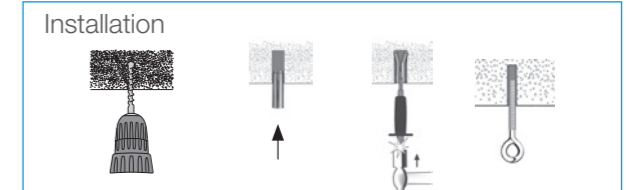
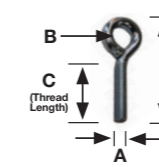


3:1 Safety rating

Product code	A	B (mm)	C (mm)	Max. SWL (kg)	Quantity
WEDGE8-25	25	18	M8	200	10
WEDGE8-18	18	10	M8	200	10

Eyebolt

- Closed-eyes for ultimate strength
- Ideal for suspending services with Standard Hangers (page 30)
- Available fully threaded or partially threaded



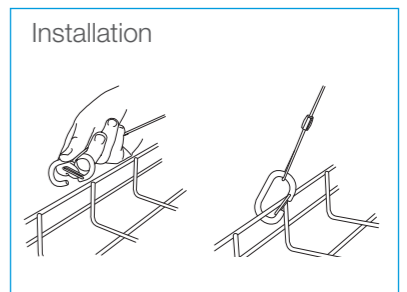
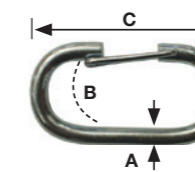
5:1 Safety rating

Product code	A	B (mm)	C (mm)	D (mm)	Max. SWL (kg)	Quantity
EYEBOLT-M8-130MM-F/TH	M8	13	130	168	325	10
EYEBOLT-M8-200MM-98MM	M8	13	98	230	325	10
EYEBOLT-M8-0.2M-F/TH	M8	13	190	230	325	10

Product code	A	B (mm)	C (mm)	D (mm)	Max. SWL (kg)	Quantity
EYEBOLT-M10-130MM-F/TH	M10	13	130	174	325	10
EYEBOLT-M10-200MM-98MM	M10	13	98	238	325	10
EYEBOLT-M10-0.2M-F/TH	M10	13	190	238	325	10

Link Hook

- Easy to attach and detach for loading cable tray
- Suitable for services that require access or maintenance
- Large inner dimension for easy fit
- Ideal for use with the Y-Fit and Y-Fit Accessory (page 42)

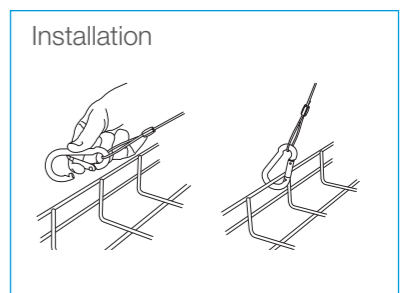
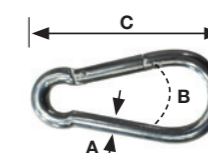


4:1 Safety rating

Product code	A (mm)	B (mm)	C (mm)	Max. SWL (kg)	Quantity
LINK-HOOK	6	15	48	45	15,539 mm

Karabiner

- Versatile fixing, easy to attach and detach
- Available in Stainless steel



5:1 Safety rating

Product code	A (mm)	B (mm)	C (mm)	Max. SWL (kg)	Quantity
KARA-6-60	6	8	60	45	10
KARA-6-60-S	6	8	60	45	10
KARA-8-80	8	10	80	90	10
KARA-8-80-S	8	10	80	90	10

Trapeze Accessories

Trapeze No. 2, 3 & 4

Combine Trapeze as an accessory with any Trapeze kit for multi-tiered installations.

Product code:
TRAPEZE-NO2
TRAPEZE-NO3
TRAPEZE-NO4



Trapeze Plus No. 2, 3 & 4

Combine Trapeze Plus as an accessory with any Trapeze kit for multi-tiered installations. Load rating of 45-225 kg with a 3:1 safety factor.

Product code:
TRAPEZE-PLUS-NO2
TRAPEZE-PLUS-NO3
TRAPEZE-PLUS-NO4



Butterfly Trapeze

Ideal for use with light ductwork. Combine Butterfly Trapeze as an accessory with any Trapeze kit for multi-tiered installations. Maximum load rating of 45 kg with a 5:1 safety factor.

Product code:
BT2-ACC-PAD



Duct Trapeze

Ideal for use with rectangular ductwork. Combine Duct Trapeze as an accessory with any Trapeze kit for multi-tiered installations. Maximum load rating of 45 kg with a 5:1 safety factor.

Product code:
DT2-ACC-PAD



Tools & Finishing Accessories

Tensioning Tool

- Applies tension easily with the 6:1 gear drive mechanism
- Designed control mechanism to prevent over tensioning
- Compact, easy to handle, operate and carry
- For use with 6 mm Catenary kits

Product code:
CTI-6MM-TOOL



Adjustment Keys

- Use for adjusting the Gripper hanger height (pre-load)
- Two sizes available – for Gripper hangers No.1- No.3 and Gripper hangers No.4, No.5 and Catenary kits. For D3 and D6 use No.1 - No.3 adjustment key

Product code:
KEY-FLAG
(for sizes No.1 to No.3)
KEY-HF45-LK
(for sizes No.4, No.5 and Catenary)



Tools & Finishing Accessories

Drop-In Anchor Punch

- Leaves four permanent indents on the anchor to advise correct installation
- Ergonomic handle with hand protection
- Three sizes available to suit M6, M8 or M10 anchor

Product code:
MAN-PUNCH-M6
MAN-PUNCH-M8
MAN-PUNCH-M10



Protective Sleeving

- Protective black tubing
- Ideal for use on 2 mm and 3 mm wire rope
- Available in 25 m lengths as standard

Product code:
SLEEVE-2MM
SLEEVE-3MM



Driver Bit

- For use with a power driver
- Torx head to fit Concrete Screw or Cracked Concrete Screw (page 74)

Product code:
CONC-SCREW-BIT



Wire Anchor Installation Tool

- Tool securely locates onto the wire anchor to hammer into place

Product code:
WIRE-ANCHOR-TOOL



Fixing Tool for Ceiling Clip Wood

- For use with a power driver
- Hexagonal head to fit AF 8 mm

Product code:
SOCKET-6.5MM



Wire Cutters

- Hardened, durable jaws
- Two sizes available – pocket size for use up to 3 mm diameter wire rope, or large, providing greater leverage for up to 6 mm diameter wire rope

Product code:
CUTTER-GRIPPLE
CUTTER-6MM



Ceiling Fixing Kit

- Decorative cover to sit flush against a suspended ceiling
- Hides the Standard Hanger
- Suitable for No.1 wire size

Product code:
CEILING-COVER



Twister

- Keeps tail wires neat and tidy
- Grey aesthetic finish - blends into background
- For use with 2 mm and 3 mm wire rope

Product code:
TWIST-100BB



Corner Saddle

- Ideal for use with phenolic ductwork
- Also available with magnetic fixing for steel
- Use with wire rope up to 3 mm

Product code:
CORNER-SADDLE
(standard)
CORNER-SADDLE-MAG
(magnetic)

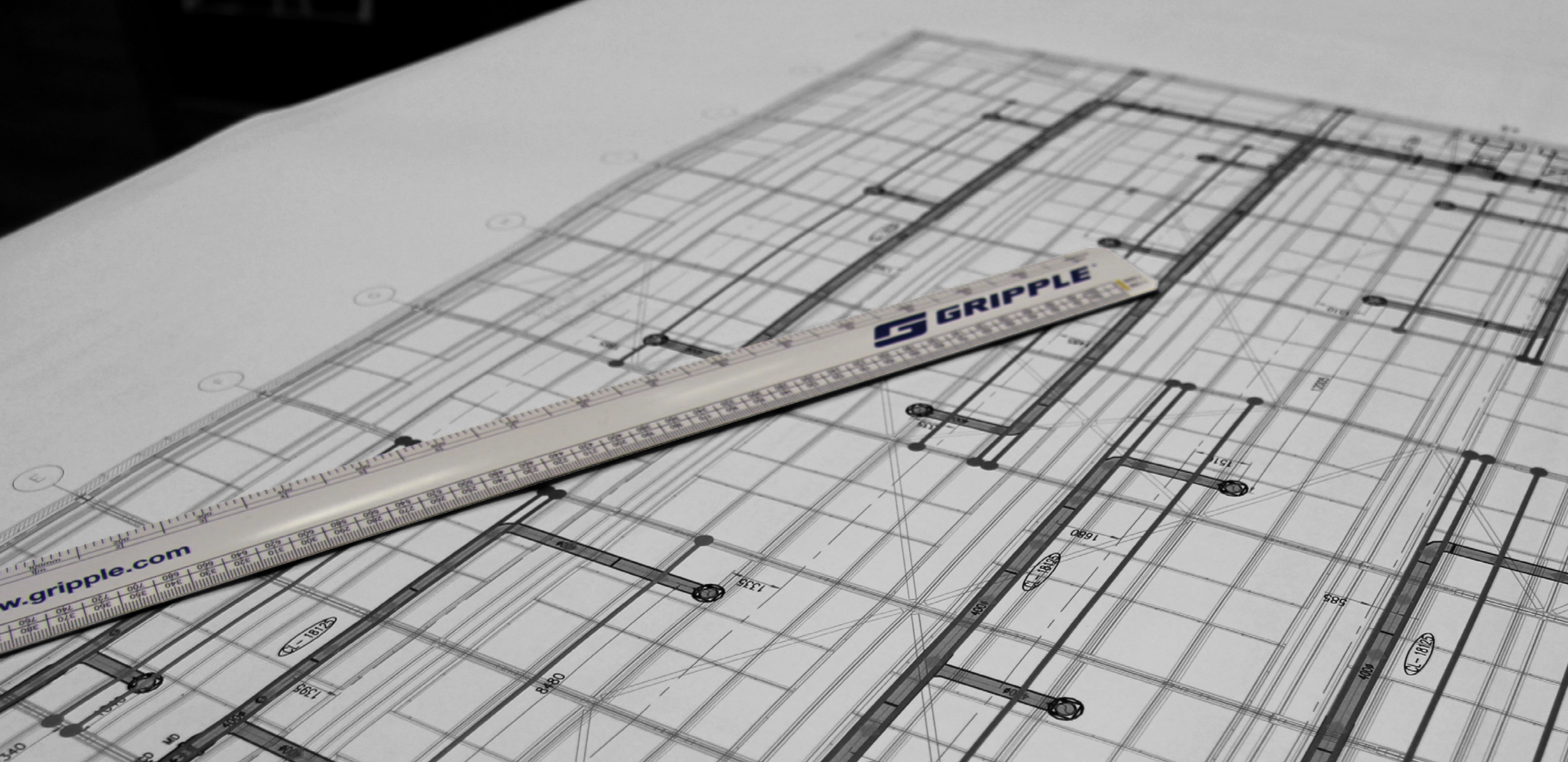


Thru-In-1® Sleeve Packs

- 25 Sleeve Refill packs available in 22 mm and 28 mm sizes
- Yellow sleeve design identifies gas pipe installation

Product code:
22 mm: TI1-22-REFILL
28 mm: TI1-28-REFILL





Technical

Technical Services	page 84
Hanging at Angles	page 88
Wire Rope Construction & Cross Sections	page 88
Nominal Ductwork Weights	page 89
Pipe Support Spacing	page 90
Key Recommendations	page 91

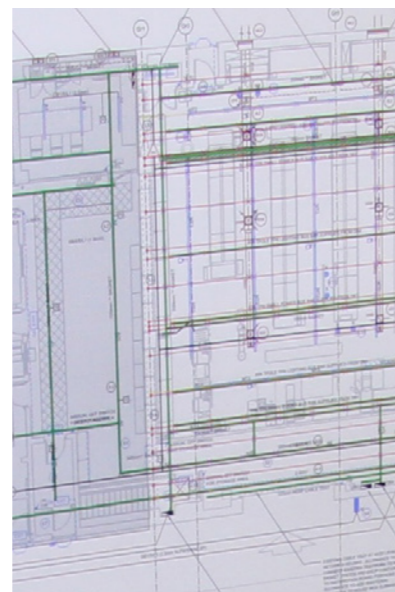
Technical Services



Gripple Technical Services is a dedicated team of qualified Engineering Physicists and Mechanical Engineers that offers CIBSE certified CPD presentations and provides the following range of engineering services to building services consultants, designers and engineers.

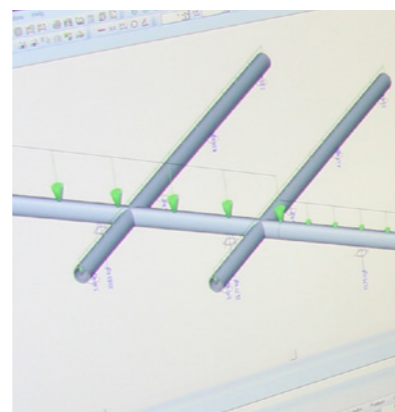
Installation Design

Gripple Technical Services offers a full suspension system design service. Drawings can be submitted in either .dwg or .pdf file formats and are returned fully annotated and costed. Bespoke bracket design, and assistance with minimising suspension elements and cost can also be provided. In order to reduce programme time and installation costs further, Gripple Catenary Systems can be employed to span structural steels and suitable building components. Gripple's Installation Design service provides the contractor with annotated drawings showing the location and length of each catenary wire to simplify the installation process.



Catenary Tension Analysis

Catenary systems can impose loads on building structures far in excess of the vertical loads applied to each free span. It's for this reason that Gripple Technical Services offers computer modelled catenary tension analyses to determine both final catenary sag and more importantly, anchor point loading. This ensures that all catenary systems installed meet the requirements of the structural engineer.



BIM

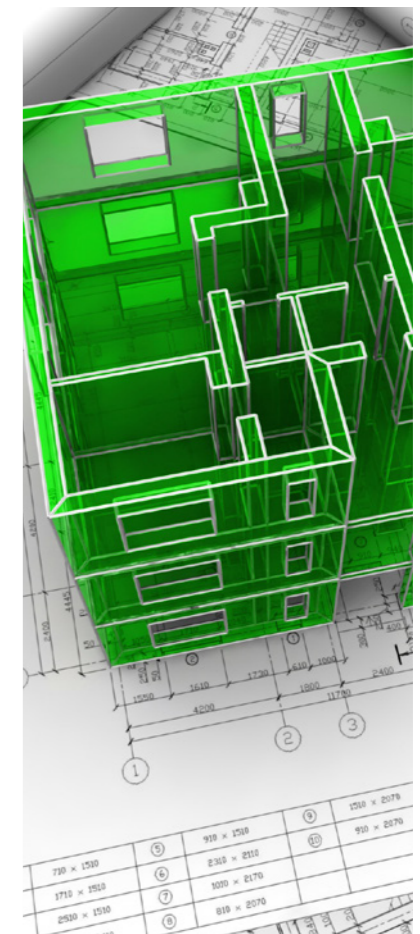
Building Information Modelling (BIM) is now a mandatory requirement for centrally funded government projects in the UK, and this highly collaborative way of working is fast becoming the preferred method for carrying out progressive private sector projects.

Gripple Ltd. is the only supplier of wire rope suspension systems that offers consultants and contractors full BIM support in the form of 3D model families. This allows designers to add both fixed and suspended supports for building services, and carry out clash detection in the virtual project environment.

Models are available in a range of file formats including .rfa, .ifc and .dwg and offer full connectivity to product data which can be used to aid cost management, construction collaboration and facilities management.

Detailed schedules of Gripple components can be created meaning only the correct quantity of product is ordered, minimising cost and waste. Gripple Technical Services has recognised the advantages that BIM brings to construction projects and is committed to working with consultants and contractors to develop their BIM capabilities.

Contact Gripple Technical Services for the latest BIM models



Embodied CO₂ Assessment and BREEAM or LEED Accreditation

Gripple Ltd. recognises that today's buildings need to be designed to the highest environmental standards. In order to facilitate this, Gripple Technical Services is able to provide calculations, based on drawing submissions or site surveys, to determine the ECO2 savings when switching to lightweight wire rope suspension systems. This supporting evidence can then be submitted to BREEAM assessors in order to obtain BREEAM credits or to LEED assessors for LEED points.



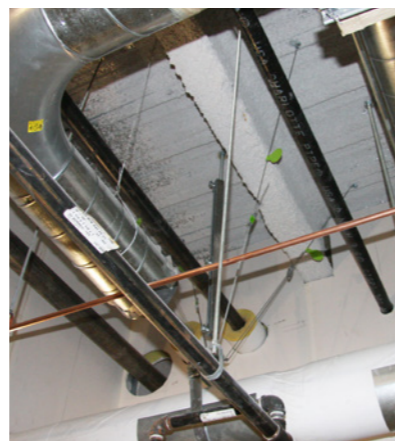
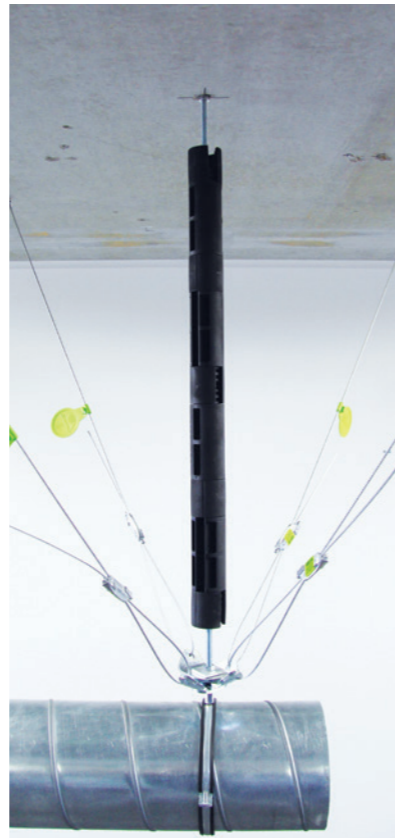
Seismic Bracing & Blast Protection Systems

Gripple Ltd. is a leading provider of seismic bracing and blast protection systems.

In contrast to standard wire bracing, Gripple's seismic system is fully tested and approved to OSHPD OPA-2123-10 and UL NEBS GR 63 Core Certification and has SMACNA verification, recognised as the most demanding requirement in the world.

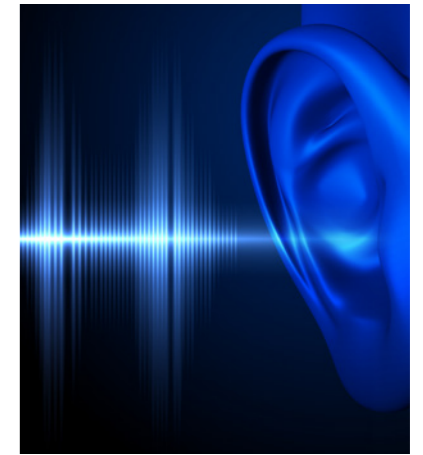
Gripple Technical Services can offer:

1. Engineered seismic bracing calculations based on design category, occupancy, importance and relevant site specific seismic specifications.
2. Detailed engineer's sealed drawings (electronic format) prepared in AutoCAD or .pdf files (submitted by the consultant/contractor) indicating the location of seismic bracing points and bracket type.
3. Gripple on-site training on seismic product installation.
4. Completion visit by Gripple Seismic Authorized Representative to ensure correct installation.
5. Gripple Seismic Bracing products per engineering calculations, including:
 - a. Seismic wire rope kit with End Fixing and colour coded verification tag
 - b. Seismic component bracket
 - c. Gripple Seismic Hanger



Acoustic & Vibration Performance

Gripple wire suspensions offer vastly improved acoustic performance over traditional installation methods. Gripple Technical Services can supply independent test data which confirms the levels of attenuation that Gripple wire rope suspensions achieve over a range of audible and inaudible frequencies, when compared to threaded rod.



Technical Specifications & Best Practice Guides

Along with industry leading certified CPD presentations on a range of subjects, Gripple Technical Services offers a range of published material to ensure that installations are done in accordance with the best standards. Titles include 'A Guide to the use of Wire Suspensions in Swimming Pool Environments', 'Suspension of Ductwork and Associated Services with Steel Wire Ropes' and 'Suspension of Pipework and Associated Equipment with Steel Wire Ropes'. A generic specification is also available should you wish to include wire rope suspension systems in your design without specifying Gripple products. Gripple Technical Services can also offer advice should Fire Rated Suspension Systems be required.



On-site Support

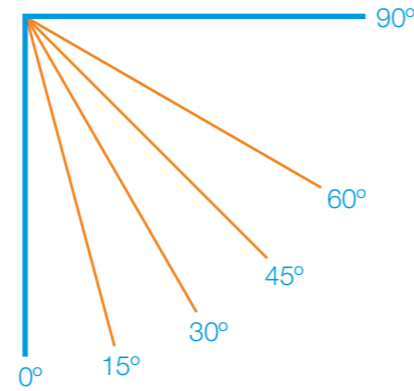
Pre-commencement site surveys, on-site pull testing to verify substrate suitability, progress reports and completion certificates can all be requested from Gripple Technical Services. Toolbox Talks are also available on a range of Gripple products and time saving installation methods.



Hanging at Angles

The load rating for a Gripple Hanger is based on the suspension being hung vertically. If the wire rope is at an angle, an additional sideways force is applied which increases the load on the suspension. The net effect is shown in the table below.

Hanger size	Maximum load (kg) at an angle from vertical				
	0°	15°	30°	45°	60°
No.1	10	9.6	8.6	7	5
No.2	45	43	39	32	22
No.3	90	87	78	64	45
No.4	225	217	195	159	113
No.5	325	314	281	230	163
Load %	100	96	86	70	50

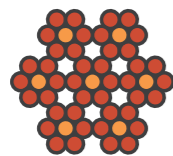


For Gripple hanger hung at an angle in excess of 60° from vertical, contact Gripple Technical Services.

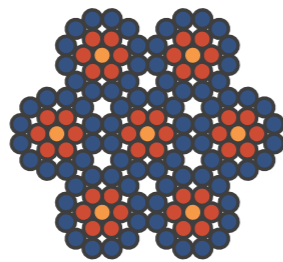
Wire Rope Construction & Cross Sections

The wire ropes used within our product ranges are manufactured with a galvanised coating in accordance with the norm EN 12385.

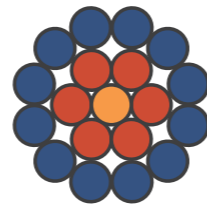
Wire rope size	Diameter (mm)	Construction
No.1	1.5	7 x 7 or 1 x 19
No.2	2	7 x 7 or 1 x 19
No.3	3	7 x 7 or 1 x 19
No.4	4.75	7 x 19
No.5	6	7 x 19



7 x 7 (6/1)



7 x 19 (12/6/1)



1 x 19 (12/6/1)

Nominal Ductwork Weights

Galvanised Steel Spirally Wound Circular Ductwork

The Gripple hanger size is based on a 2.5 m hanger spacing.

Diameter (mm)	Circumference (m)	Weight (kg/m)	Min. Gripple Hanger size
80	0.25	1.00	No.1
100	0.32	1.56	No.1
125	0.40	1.96	No.1
160	0.50	2.50	No.1
200	0.63	3.75	No.2
250	0.80	4.69	No.2
300	0.94	5.63	No.2
315	1.00	5.92	No.2
400	1.26	9.10	No.2
500	1.57	11.50	No.2
630	1.98	14.50	No.2
710	2.23	16.15	No.3
1000	3.14	28.50	No.3
1250	3.93	45.30	No.4

This table is an extract from DW/144 2013 edition.

Rectangular Ducting

Size (mm)	250	500	750	1000	1250	1500	1750	2000	2250	2500	2750	3000
250	7.25	10.75	14.25	19.00	-	-	-	-	-	-	-	-
500	-	14.25	17.75	22.75	34.00	38.75	47.75	52.75	-	-	-	-
750	-	-	21.25	26.25	38.75	43.50	52.75	58.00	68.50	74.00	90.75	97.00
1000	-	-	-	30.00	43.50	48.25	58.00	63.00	74.00	79.50	97.00	103.50
1250	-	-	-	-	48.25	53.00	63.00	68.00	79.50	85.00	103.50	109.75
1500	-	-	-	-	-	57.75	68.00	73.25	85.00	90.50	109.75	116.00
1750	-	-	-	-	-	-	73.25	78.25	90.50	96.00	116.00	122.25
2000	-	-	-	-	-	-	-	83.50	96.00	101.50	122.25	128.50
2250	-	-	-	-	-	-	-	-	101.50	107.00	128.50	134.75
2500	-	-	-	-	-	-	-	-	-	112.50	134.75	141.00
2750	-	-	-	-	-	-	-	-	-	-	141.00	147.50
3000	-	-	-	-	-	-	-	-	-	-	-	153.75

For galvanised steel spirally-wound flat oval ductwork, insulated ductwork and phenolic ductwork weights, please contact Gripple Technical Services.

Pipe Support Spacing

Recommended minimum support spacing for steel and copper pipes.

Copper Pipes

Copper tube	Tube size	OD	Weight empty	Weight filled	Max. spacing for horizontal runs	Weight per Gripple Clamp*
BS EN 1057 (Table X)	mm	mm	kg/m	kg/m	m	kg
	15	15	0.28	0.43	1.2	0.51
	22	22	0.53	0.85	1.8	1.53
	28	28	0.68	1.22	1.8	2.19
	35	35	1.13	1.96	2.4	4.72
	42	42	1.37	2.60	2.4	6.24
	54	54	1.77	3.86	2.7	10.43
	67	67	2.74	5.96	3.0	17.87
76	76	3.12	7.31	3.0	21.92	

Mass calculated at standard pressure with water at 4°C.

*At max. bracket spacing

Steel Pipes

Steel pipe	Thread size	OD	Weight empty	Weight filled	Max. spacing for horizontal runs	Weight per Gripple Clamp*
BS EN 1057 (Table X)	inches	mm	kg/m	kg/m	m	kg
	1/2	21	1.22	1.39	2.0	2.77
	3/4	27	1.58	1.91	2.4	4.59
	1	34	2.44	2.97	2.7	8.02
	1 1/4	42	3.14	4.05	2.7	10.93
	1 1/2	48	3.61	4.87	3.0	14.60
	2	60	5.10	7.14	3.4	24.29
	2 1/2	76	6.51	10.04	3.7	37.13
	3	89	8.47	13.37	3.2	42.79

Mass calculated at standard pressure with water at 4°C.

*At max. bracket spacing

Key Recommendations

Failure to comply with these recommendations may result in product malfunction and possible damage to property or person and will invalidate the Gripple guarantee. Gripple products are guaranteed to be free from defects in materials and workmanship in accordance with our terms and conditions. No other warranty, whether express or implied, including any warranty of merchantability or fitness for purpose shall exist in connection with the sale or use of any Gripple product.

Full technical information and installation instructions should be obtained directly from Gripple Limited, Gripple Europe or Gripple Inc., any regional Gripple office, or via the website www.gripple.com.

Please adhere to the following key recommendations:



Loads

Always operate the product within its stated safe working load range.



Lifting

Do not use for lifting, either by crane or as part of a pulley system. Suspend static loads only.



Installation

Do not walk or stand on the Gripple product installation unless expressly designed for this purpose.



Painting

Do not paint the hanger prior to installation. Ensure that the hanger is in its final position prior to applying any paint to the wire rope assembly. Do not move the fastener after painting.



Lubrication

Do not apply oil or any other lubricant to the hanger or any other part of the assembly.



Joining

Never join two ends together in-line.



Wire Rope

Always use the fastener supplied and specified wire rope. Never use on coated wire rope or other rope. Trim any damaged filaments with the wire cutter before use.



Environment

Do not use in chlorinated or chemically corrosive atmospheres. Standard hangers are for use in dry and air conditioned environments only. Stainless steel hangers should be considered for high to saturated humid environments after validation by a competent person. Not suitable for Swimming pools.



Impact

If there is potential for impact on the wire rope suspension or suspended services, seek advice from Gripple Ltd. Technical Services prior to installation.



Hanging at an Angle to Vertical

Ensure that the load calculation considers the effect of 'side load'. For example, at an angle of 60° to vertical the SWL is effectively reduced by 50%



Ducting: When installing included angle teardrop hangers on round/spiral ducting or pipes, the final included angle of the assembly should not exceed 60°.



Y-Fit: Legs on Y-Fit not to be installed greater than 60°.

Quality & Approval

Gripple UK is ISO 9001:2008 and ISO 14001 certified. Gripple products meet the highest standards of quality with lowest environmental impact.



Gripple's policy is one of continuous development and innovation. We therefore reserve the right to alter specifications, etc. without notice.

www.gripple.com

info@gripple.com



Gripple Ltd (Headquarters)

The Old West Gun Works
Savile Street East
Sheffield S4 7UQ
UK

T | +44 (0) 800 018 4264

F | +44 (0) 114 275 1155

E | info@gripple.com

Gripple Inc

1611 Emily Lane
Aurora
IL 60502
USA

T | +1 866 474 7753

F | +1 800 654 0689

E | usinfo@gripple.com

Gripple Europe SARL

1, rue du commerce
BP 37
67211 Obernai Cedex
France

T | +33 (0)3 88 95 44 95

F | +33 (0)3 88 95 08 78

E | frinfo@gripple.com

Gripple India

B 95/2
Naraina Industrial Area
Phase I
New Delhi-110028

T | +91 11-40582703

F | +91 11-40582703

E | ininfo@gripple.com

WE ARE SOCIAL
FOLLOW OUR UPDATES

