



# HIGH EFFICIENCY MULTI-ROOM DUCTLESS SYSTEMS

UP TO 5 ZONE



# GREE MULTI ZONE





GREE Multi 21 systems, with inverter technology, are some of today's most advanced ductless split heat pumps. Providing both cooling and heating comfort, in as many as five separate zones, they are the perfect solution for many residential and light commercial applications. Multi 21 systems reduce energy waste, maximize efficiency and achieve up to 22 SEER, with our G10 inverter driven compressors. Best of all, the ultimate in reliable room comfort is generated with Eco-friendly R410A refrigerant.

## Design Flexibility

Gree introduces project layout flexibility by simultaneously powering up to five indoor units with one outdoor unit. For even greater flexibility, mix and match your choice of Wall Mount, Ceiling Cassette, Concealed Duct, Universal Floor/Ceiling and Mini Floor Console indoor units to create your unique Multi 21 heating and cooling system.

## Energy Savings

Gree Multi 21 systems are highly efficient zoning heat pumps that will keep operating costs under control, year round. No need for a bulky add-on coil or expensive-to-operate electric heat. Our variable speed heat pumps, powered by the G10 inverter, provide heat at up to 1/3 the cost of electric heat. With Multi 21 ductless systems, there are no losses due to leaky ductwork.

## Maximum Comfort

Multi 21 systems eliminate irritating temperature swings, by continuously monitoring comfort levels and adjusting compressor speed and refrigerant flow according to the cooling and heating needs of each room. With I-Feel activated, Multi 21 systems will sense temperatures surrounding the remote control **and adjust** compressor speed and air flow to maintain the comfort level of your personal space.

## Durability & Longevity

All duct free Multi 21 units are made from heavy gauge rolled steel and covered with a durable powder coat paint finish. Gree's Acrylic Resin/Anti-Corrosion Coil Protection coating provides enhanced coil protection in corrosive environments, while improving hydrophilic properties and efficiency; and our multi-point self-diagnostics continuously monitor critical system parameters to prevent failures. These features, along with many other design considerations, will extend the life of your Multi 21 system.



# Multi Zone Inverter Heat Pump

High Efficiency Multi 21 heat pump units can heat and cool up to 5 zones without distribution boxes. Each Multi 21 is powered by Gree's energy efficient G10 inverter and a variable speed compressor. Our G10 inverter technology saves energy, reduces outdoor noise and keeps room temperature consistent by eliminating the harsh starts & stops of conventional systems. Each coil has Acrylic Resin/Anti-Corrosion protective coating to promote energy efficiency.



## Features and Benefits:

- ▶ High Efficiency up to 22 SEER
- ▶ Sound Levels down to 56 dB(A)
- ▶ Up to 5 indoor units
- ▶ Multi-point Diagnostics
- ▶ Low Ambient Cooling down to 0° F
- ▶ Low Ambient Heating down to -4° F
- ▶ Intelligent Defrost
- ▶ Heavy Gauge Steel Cabinet
- ▶ Includes Selected Line-set Adaptors

MODELS		MULTI18HP230V1BO	MULTI24HP230V1BO	MULTI30HP230V1BO	MULTI36HP230V1BO	MULTI42HP230V1BO
Number of Zones		2	2 - 3	2 - 4	2 - 5	2 - 5
<b>SYSTEM PERFORMANCE - NON-DUCTED INDOOR UNITS</b>						
Cooling Capacity (min-max)	Btu/h	18,000 (7,000-21,000)	26,000 (7,500-31,000)	29,000 (8,189-33,438)	34,000 (8,871-35,826)	39,000 (8,871-40,944)
SEER/EER*		22/12.5	21/9.5	21/12.0	21/12.4	21/10.4
Heating Capacity (min-max)	Btu/h	19,000 (8,530-22,600)	29,000 (7,500-35,000)	31,600 (8,189-32,414)	42,500 (8,871-44,356)	45,000 (8,871-46,062)
HSPF/COP		9.0/3.5	10.2/3.7	10.2/3.8	10.2/3.7	10.2/3.6
Energy Star®		Yes	NO	NO	NO	NO
<b>SYSTEM PERFORMANCE - SLIM DUCTED INDOOR UNITS</b>						
Cooling Capacity (min-max)	Btu/h	18,000 (7,000-21,000)	26,000 (7,500-33,000)	29,200 (6,200-30,800)	34,000 (13,400-37,000)	39,500 (13,800-42,800)
SEER/EER		14/10.9	14/9.5	14.5/9.1	14.8/10.1	14.7/9.8
Heating Capacity (min-max)	Btu/h	19,000 (8,530-22,600)	29,000 (7,500-35,000)	32,000 (6,500-32,500)	43,500 (7,231-44,745)	46,500 (7,500-47,000)
HSPF/COP		9.0/3.1	9.0/3.2	9.8/3.3	9.9/3.0	9.6/3.1
<b>OUTDOOR UNIT</b>						
Compressor Type		DC INVERTER DRIVEN ROTARY				
Sound Level	dB(A)	56	59	59	61	61
Cooling Temperature Range	°F	0 – 118°F	0 – 118°F	0 – 118°F	0 – 118°F	0 – 118°F
Heating Temperature Range	°F	-4 – 75°F	-4 – 75°F	-4 – 86°F	-4 – 86°F	-4 – 86°F
Unit Dimension (WxHxD)	in	38.0 x 27.6 x 15.6	38.6 x 31.1 x 17.3	38.4 x 31.0 x 17.3	42.5 x 43.4 x 17.3	42.5 x 43.4 x 17.3
Package Dimension (WxHxD)	in	40.4 x 28.9 x 17.9	42.5 x 33.1 x 19.1	42.5 x 33.1 x 19.1	45.5 x 43.9 x 18.9	45.5 x 43.9 x 18.9
Weight (Net/Gross)	lbs	114.4/124.3	152.9/163.9	154.0/169.4	198.0/215.6	198.0/216.0
Refrigerant / Charge R410A	oz	56.5	77.6	98.7	128.8	128.8
Coil Type ID & OD		Copper / Aluminum with Acrylic Resin/Anti-Corrosion Coating				
<b>INSTALLATION</b>						
Line Set Size (Liquid - Gas)	Port A	in	1/4 – 3/8	1/4 – 3/8	1/4 – 3/8	1/4 – 3/8
	Port B	in	1/4 – 3/8	1/4 – 3/8	1/4 – 3/8	1/4 – 3/8
	Port C	in		1/4 – 3/8	1/4 – 3/8	1/4 – 3/8
	Port D	in			1/4 – 3/8	1/4 – 3/8
	Port E	in				1/4 – 3/8
Pre-Charge Length	ft	33	98	131	131	131
Total Piping Length	ft	65	197	230	246	246
Length to farthest Indoor Unit	ft	33	65	82	82	82
Elevation (OD above IDU)	ft	33	33	49	49	49
<b>ELECTRICAL</b>						
Voltage / Phase / Hertz		208-230V /1/ 60Hz	208-230V /1/ 60Hz	208-230V /1/ 60Hz	208-230V /1/ 60Hz	208-230V /1/ 60Hz
MCA	Amp	15	22	19	23	24
MOCP	Amp	25	35	30	35	40
Interconnecting Wire		AWG14 / 4	AWG14 / 4	AWG14 / 4	AWG14 / 4	AWG14 / 4
Limited Warranty		7 Years on Compressor / 5 Years on Parts				

# Premier Wall Mount

The feature-rich Terra teamed with the Multi21 is our highest-efficiency indoor high wall model. Sleek and contemporary in appearance, the Terra easily blends in with its surroundings and utilizes a highly intuitive wireless remote control. Our state-of-the-art Photocatalytic Filter improves air quality by eliminating up to 99.9% of bacteria and viruses.



**TERRA**  
Save energy, protect the environment



(Sold Separately)

## Features and Benefits:

- ▶ 4-way Airflow operation (Swing)
- ▶ Waterfall heating airflow
- ▶ 7 Fan Speeds-from Mute to Turbo
- ▶ Dry Coil Mode for Anti-Mildew
- ▶ I-Feel Automatic Function
- ▶ XK-41 Wired Controller (Optional)
- ▶ Low voltage start-up
- ▶ Intelligent Preheating
- ▶ Comfortable Sleep Mode
- ▶ LED display
- ▶ Self-diagnosis
- ▶ Memory Function

MODELS		TERRA09HP230V1AH	TERRA12HP230V1AH	TERRA18HP230V1BH	TERRA24HP230V1BH
System Type		Heat Pump			
<b>SYSTEM PERFORMANCE</b>					
Cooling Capacity (min-max)	Btu/h	9,000 (3,500-9,600)	12,000 (3,100-13,000)	18,000 (3,412-22,178)	24,000 (6,824-29,343)
Heating Capacity (min-max)	Btu/h	9,800 (2,200-11,000)	13,000 (2,400-14,000)	25,000 (3,412-23,202)	25,000 (7,506-37,532)
Air flow (min-max)	CFM	118 - 418	118 - 453	282 - 559	294 - 647
Sound Level (min-max)	dB(A)	23 - 42	24 - 44	33 - 51	38 - 52
Dehumidification	pt/hr	1.9	3.0	3.8	5.3
Unit Dimension (WxHxD)	in	34.1 x 11.5 x 8.2	34.1 x 11.5 x 8.2	40.1 x 12.6 x 9.1	46.4 x 12.8 x 10.4
Package Dimension (WxHxD)	in	37.2 x 14.9 x 11.7	37.2 x 14.9 x 11.7	43.2 x 15.6 x 13.4	49.2 x 16.2 x 14.0
Weight (Net/Gross)	lbs	24 / 31	24 / 31	31 / 39	39 / 47
<b>INSTALLATION</b>					
Line Set Size (Liquid - Gas)	in	1/4 - 1/2	1/4 - 1/2	1/4 - 5/8	1/4 - 5/8
Limited Warranty	5 Years on Parts				

# Tech Series Wall Mount

Crown, the smart ductless high wall unit. Slim compact design hangs inconspicuously on the wall and mixes well with most interior designs.

Crown's built-in Wi-Fi technology allows direct local control from Smartphones with the Gree-Smart app.



**CROWN**



## Features and Benefits:

- ▶ Whisper Quiet down to 22 dB(A)
- ▶ Stainless Platinum Finish
- ▶ I-Feel Temperature Control
- ▶ 180° Multi-Directional Airflow
- ▶ 7 Fan Speeds
- ▶ 4-way Adjustable Swing Louvers
- ▶ Smartphone Interface
- ▶ Intelligent Heating
- ▶ Power Failure Recovery

MODELS		CROWN09HP230V1AH	CROWN12HP230V1AH	CROWN18HP230V1AH
System Type		HEAT PUMP		
<b>SYSTEM PERFORMANCE</b>				
Cooling Capacity (min-max)	Btu/h	9,000 (1,535-12,966)	12,000 (2,900-15,354)	18,000 (4,436-21,496)
Heating Capacity (min-max)	Btu/h	9,000 (2,388-13,648)	13,000 (3,071-18,766)	19,000 (3,753-24,566)
Air flow (min-max)	CFM	206 - 412	265 - 471	324 - 530
Sound Level (min-max)	dB(A)	22 - 41	23 - 42	26 - 48
Dehumidification	pt/hr	1.7	3.0	3.8
Unit Dimension (WxHxD)	in	37.8 x 12.6 x 8.1	37.8 x 12.6 x 8.1	37.8 x 12.6 x 8.1
Package Dimension (WxHxD)	in	41.1 x 15.9 x 13.1	41.1 x 15.9 x 13.1	41.1 x 15.9 x 13.1
Weight (Net/Gross)	lbs	30.9 / 37.5	30.9 / 37.5	30.9 / 37.5
<b>INSTALLATION</b>				
Line Set Size (Liquid - Gas)	in	1/4 - 1/2	1/4 - 1/2	1/4 - 5/8
Limited Warranty		5 Years on Parts		

# Comfort Wall Mount

Vireo premium efficiency ductless high wall has a compact design, for quiet comfort and attractive appearance. You can count on consistent comfort from Vireo, which features I-Feel temperature control, multiple fan speeds, and adjustable vertical swing louvers.



(Sold Separately)

## Features and Benefits:

- ▶ Four Fan Speeds
- ▶ IR Remote Controller
- ▶ Turbo Mode
- ▶ Vertical Swing Louver
- ▶ Cleanable Air Filter
- ▶ Dry Coil Mode for Anti-Mildew Protection
- ▶ Remote Control Lockout
- ▶ Power Failure Recovery
- ▶ XK-41 Wired Controller (Optional)

MODELS		VIR09HP230V1AH	VIR12HP230V1AH	VIR18HP230V1AH	VIR24HP230V1AH
System Type		HEAT PUMP			
<b>SYSTEM PERFORMANCE</b>					
Cooling Capacity (min-max)	Btu/h	9,000 (3,100-9,600)	12,000 (3,100-13,000)	18,000 (6,800-20,000)	22,000 (6,824-27,296)
Heating Capacity (min-max)	Btu/h	11,000 (1,911-12,000)	13,000 (2,400-14,000)	19,800 (7,340-23,500)	23,000 (6,824-30,708)
Air flow (min-max)	CFM	171-377	171-400	335-559	530-706
Sound Level (min-max)	dB(A)	29-43	29-45	39-47	36-48
Dehumidification	pt/hr	1.7	3.0	3.8	4.2
Unit Dimension (WxHxD)	in	33.4 x 11.4 x 8.2	33.4 x 11.4 x 8.2	38.2 x 11.8 x 8.8	42.4 x 12.8 x 9.7
Package Dimension (WxHxD)	in	36.3 x 14.9 x 11.1	36.3 x 14.9 x 11.1	41.0 x 15.1 x 12.6	45.2 x 16.3 x 13.8
Weight (Net/Gross)	lbs	22.1 / 26.5	22.1 / 26.5	28.7 / 35.3	34.2 / 41.9
<b>INSTALLATION</b>					
Line Set Size (Liquid - Gas)	in	1/4 - 3/8	1/4 - 1/2	1/4 - 5/8	1/4 - 5/8
Limited Warranty		5 Years on Parts			

# Ceiling Cassette

Gree's Multi 21 Ceiling Cassette will inconspicuously provide quiet performance through innovative design. The Multi 21 Ceiling Cassette is extremely suitable for any room, and can be easily installed in suspended ceilings with only a discreet decorative discharge grille visible.



## Features and Benefits:

- ▶ 4-way Discharge Air
- ▶ Multi Speed Fan
- ▶ Remote Control Lockout
- ▶ Swing Louver
- ▶ Decorative Discharge Air Grille (sold separately)
- ▶ IR Remote and XK - 19 Wired Controllers incl.
- ▶ Power Failure Recovery
- ▶ Internal Condensate Drain Pump
- ▶ Sentry Float Switch
- ▶ Cleanable Air Filter
- ▶ Fresh Air Intake (24K model only)

## CEILING CASSETTE

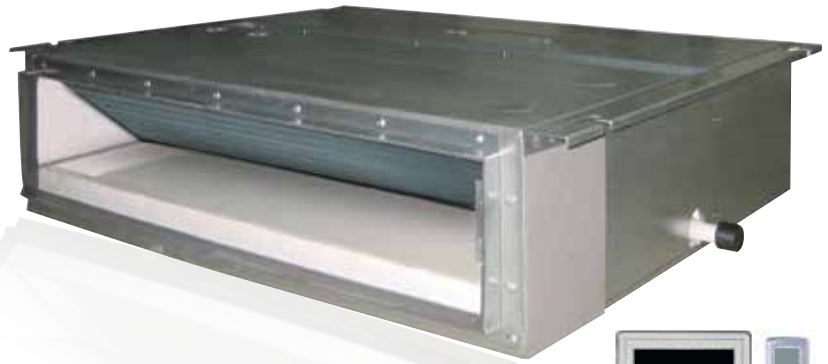
MODELS		CAS12HP230V1AC	CAS18HP230V1AC	CAS24HP230V1AC
System Type		Heat Pump	Heat Pump	Heat Pump
<b>SYSTEM PERFORMANCE</b>				
Cooling Capacity (Min-Max)	Btu/h	12,000 (6,100-15,300)	14,400 (7,500-24,200)	22,800 (8,200-31,000)
Heating Capacity (Min-Max)	Btu/h	13,000 (6,800-13,600)	16,000 (6,800-22,200)	27,400 (7,500-28,200)
Airflow (max)	CFM	353	353	694
Sound Level (min-max)	dB(A)	42-46	42-46	45-49
Dehumidification	pt/hr	3.0	3.8	5.3
Cabinet Dimensions (WxHxD)	in	22.4 x 9.1 x 22.4	22.4 x 9.1 x 22.4	33.1 x 10.2 x 33.1
Package Dimensions (WxHxD)	in	33.5 x 13.0 x 29.0	33.5 x 13.0 x 29.0	38.0 x 13.0 x 38.0
Weight (Net/Gross)	lbs	39.6/50.6	39.6/50.6	61.6/77.0
<b>INSTALLATION</b>				
Line Set Size (Liquid - Gas)	in	1/4 - 3/8	1/4 - 1/2	3/8 - 5/8
Limited Warranty		5 Years on Parts		

## CASSETTE DISCHARGE GRILLES

Part Numbers		CASGRILLE1SM	CASGRILLE1SM	CASGRILLE1LG
Grille Dimensions (WxHxD)	in	25.6 x 2.0 x 25.6	25.6 x 2.0 x 25.6	37.4 x 2.4 x 37.4
Package Dimensions (WxHxD)	in	29.0 x 4.5 x 26.5	29.0 x 4.5 x 26.5	41.0 x 5.0 x 40.5
Weight (Net/Gross)	lbs	5.5/8.0	5.5/8.0	7/10

# Slim Duct

Compact and powerful, the Gree Multi21 Concealed Duct indoor units offer the ultimate in flexibility and discretion. These slim indoor units are designed to be concealed above suspended ceilings or within open closet spaces to deliver conditioned air via ducting and suitable ceiling or wall grilles.



## Features and Benefits:

- ▶ Medium Static Pressure Capability
- ▶ Slim Line Construction 7-7/8" high
- ▶ Alternate Return Air From Bottom Or Rear
- ▶ Internal Condensate Pump
- ▶ Sentry Float Switch
- ▶ IR Remote and XK-19 Wired Controllers incl.

MODELS		DUCT09HP230V1AD	DUCT12HP230V1AD	DUCT18HP230V1AD	DUCT24HP230V1AD
System Type		Heat Pump			
<b>SYSTEM PERFORMANCE</b>					
Cooling Capacity (Min-Max)	Btu/h	8,500 (5,460-14,300)	11,900 (6,100-15,300)	15,300 (7,500-24,200)	23,800 (8,200-31,000)
Heating Capacity (Min-Max)	Btu/h	9,500 (5,100-10,900)	13,100 (6,800-13,600)	18,700 (6,800-22,200)	27,400 (7,500-28,200)
Airflow (max)	CFM	147/265	177/324	294/412	324/589
Sound Level (min-max)	dB(A)	31/37	32/39	33/41	34/42
Dehumidification	pt/hr	1.7	3.0	3.8	5.3
Unit Dimensions (WxHxD)	in	27.6 x 7.9 x 24.2	27.6 x 7.9 x 24.2	35.4 x 7.9 x 24.2	43.3 x 7.9 x 24.2
Package Dimensions (WxHxD)	in	35 x 29 x 12	35 x 29 x 12	44 x 29 x 12	52 x 29 x 12
Weight (Net/Gross)	lbs	48.4/69.4	50.6/63.8	69.4/79.2	68.2/90.2
<b>INSTALLATION</b>					
Line Set Size (Liquid - Gas)	in	1/4 - 3/8	1/4 - 3/8	1/4 - 1/2	3/8 - 5/8
Limited Warranty		5 Years on Parts			



# Universal Floor/ Ceiling

Our Multi21 Universal Floor/Ceiling indoor units are designed to be suspended from a ceiling or mounted low on a wall. The slender and lightweight design is perfect for restaurants or hallways where wall space is limited.



## Features and Benefits:

- ▶ 4-way Discharge Air
- ▶ Multi Speed Fan
- ▶ IR Remote and XK -19 Wired Controller incl.
- ▶ Comfortable Sleep Mode
- ▶ Swing Louver
- ▶ Cleanable Air Filter
- ▶ Dry Coil mode for Anti -Mildew Protection
- ▶ Remote Control Lockout
- ▶ Power Failure Recovery

MODELS		FLR09HP230V1AF	FLR12HP230V1AF	FLR18HP230V1AF	FLR24HP230V1AF
System Type		Heat Pump			
<b>SYSTEM PERFORMANCE</b>					
Cooling Capacity (Min-Max)	Btu/h	8,500 (5,460-14,300)	11,900 (6,100-15,300)	17,000 (7,500-24,200)	22,800 (8,200-31,000)
Heating Capacity (Min-Max)	Btu/h	9,500 (5,100-10,900)	13,100 (6,800-13,600)	18,700 (6,800-22,200)	27,400 (7,500-28,200)
Airflow (max)	CFM	265/383	265/383	294/559	412/736
Sound Level (min-max)	dB(A)	36/40	36/40	40/45	44/48
Dehumidification	pt/hr	1.7	3.0	3.8	5.3
Unit Dimensions (WxHxD)	in	48.0 x 27.6 x 8.9	48.0 x 27.6 x 8.9	48.0 x 27.6 x 8.9	48.0 x 27.6 x 8.9
Package Dimensions (WxHxD)	in	53 x 32 x 12.5	53 x 32 x 12.5	53 x 32 x 12.5	53 x 32 x 12.5
Weight (Net/Gross)	lbs	88.0/110.0	88.0/110.0	88.0/110.0	99.0/118.8
<b>INSTALLATION</b>					
Line Set Size (Liquid - Gas)	in	1/4 - 3/8	1/4 - 3/8	1/4 - 1/2	3/8 - 5/8
Limited Warranty		5 Years on Parts			

# Mini Floor Console

Gree's Mini Console indoor units are aesthetically pleasing and the perfect size for any room. It can be mounted as low as six inches above the floor and has front panel access to the filter for ease of cleaning.



- ▶ 4-way Discharge Air
- ▶ Multi Speed Fan
- ▶ Comfortable Sleep Mode
- ▶ Swing Louver
- ▶ Cleanable Air Filter
- ▶ Dry Coil Mode for Anti-Mildew Protection
- ▶ IR Remote Control incl.

MODELS		CONS09HP230V1AF	CONS12HP230V1AF	CONS18HP230V1AF
System Type		Heat Pump		
<b>SYSTEM PERFORMANCE</b>				
Cooling Capacity (Min-Max)	Btu/h	9,000 (5,460-14,300)	12,000 (6,100-15,300)	18,000 (7,500-24,200)
Heating Capacity (Min-Max)	Btu/h	9,500 (5,100-10,900)	13,000 (6,800-13,600)	19800 (6,800-22,200)
Airflow (max)	CFM	188/382	206/441	241/494
Sound Level (min-max)	dB(A)	25/40	27/43	33/48
Dehumidification	pt/hr	1.7	3.0	3.8
Unit Dimensions (WxHxD)	in	27.6 x 23.6 x 8.5	27.6 x 23.6 x 8.5	27.6 x 23.6 x 8.5
Package Dimensions (WxHxD)	in	31 x 28 x 11	31 x 28 x 11	31 x 28 x 11
Weight (Net/Gross)	lbs	33.0/39.6	33.0/39.6	33.0/39.6
<b>INSTALLATION</b>				
Line Set Size (Liquid - Gas)	in	1/4 - 3/8	1/4 - 3/8	1/4 - 1/2
Limited Warranty		5 Years on Parts		



## Matching combinations and capacities:

### MULTI18HP230V1BO 2 COMBINATIONS

TWO UNITS
9 + 9
9 + 12

### MULTI24HP230V1BO 11 COMBINATIONS

TWO UNITS		THREE UNITS	
9 + 9	12 + 12	9 + 9 + 9	9 + 12 + 12
9 + 12	12 + 18	9 + 9 + 12	12 + 12 + 12
9 + 18	18 + 18	9 + 9 + 18	

### MULTI30HP230V1BO 20 COMBINATIONS

TWO UNITS		THREE UNITS		FOUR UNITS
9 + 9	12 + 18	9 + 9 + 9	9 + 12 + 12	9 + 9 + 9 + 9
9 + 12	12 + 24	9 + 9 + 12	9 + 12 + 18	9 + 9 + 9 + 12
9 + 18	18 + 18	9 + 9 + 18	12 + 12 + 12	9 + 9 + 12 + 12
9 + 24	18 + 24	9 + 9 + 24	12 + 12 + 18	
12 + 12				

### MULTI36HP230V1BO 31 COMBINATIONS

TWO UNITS		THREE UNITS		FOUR UNITS	FIVE UNITS
9 + 9	12 + 18	9 + 9 + 9	9 + 12 + 24	9 + 9 + 9 + 9	9 + 9 + 9 + 9 + 9
9 + 12	12 + 24	9 + 9 + 12	9 + 18 + 18	9 + 9 + 9 + 12	9 + 9 + 9 + 9 + 12
9 + 18	18 + 18	9 + 9 + 18	12 + 12 + 12	9 + 9 + 9 + 18	
9 + 24	18 + 24	9 + 9 + 24	12 + 12 + 18	9 + 9 + 12 + 12	
12 + 12	24 + 24	9 + 12 + 12	12 + 12 + 24	9 + 9 + 12 + 18	
		9 + 12 + 18	12 + 18 + 18	9 + 12 + 12 + 12	
				12 + 12 + 12 + 12	

### MULTI42HP230V1BO 32 COMBINATIONS

TWO UNITS		THREE UNITS		FOUR UNITS	FIVE UNITS
9 + 9	12 + 18	9 + 9 + 9	9 + 12 + 24	9 + 9 + 9 + 9	9 + 9 + 9 + 9 + 9
9 + 12	12 + 24	9 + 9 + 12	9 + 18 + 18	9 + 9 + 9 + 12	9 + 9 + 9 + 9 + 12
9 + 18	18 + 18	9 + 9 + 18	12 + 12 + 12	9 + 9 + 9 + 18	
9 + 24	18 + 24	9 + 9 + 24	12 + 12 + 18	9 + 9 + 12 + 12	
12 + 12	24 + 24	9 + 12 + 12	12 + 12 + 24	9 + 9 + 12 + 18	
		9 + 12 + 18	12 + 18 + 18	9 + 12 + 12 + 12	
				9 + 12 + 12 + 18	
				12 + 12 + 12 + 12	

Note: It is critical to size the outdoor unit for the entire building load and each indoor unit for its individual zone load. All indoor model sizes (or capacities) are not applicable to all outdoor units.



# A company founded on quality and value

GREE Electric Appliances, Inc. is the world's largest specialized air conditioner manufacturer, selling more than 100 million units in over 100 countries since 1991. The GREE brand is world-renowned for engineering 7,000 different models in 20 product categories, developing 3,000 worldwide technical patents and pioneering the Variable Refrigerant Flow system that has revolutionized modern day comfort.

GREE prides itself on the reliability and quality of its products. World class, state-of-the-art quality control methods are employed throughout the manufacturing process, including the use of a separate plant where all key components are pre-tested. More than 1,000 Research & Development technicians spend each day pursuing new and innovative designs as a commitment to ensuring customers always receive the highest quality for the best value in the world.

Scan to learn more about GREE  
Inverter ductless system



or visit us at [greecomfort.com](http://greecomfort.com)

Test conditions are based on AHRI 210/240. Specifications are subject to change without notice. Manufacturer reserves the right to discontinue, or change at any time, specifications or designs without notice or without incurring obligations. ©2016. All rights reserved. Cat No. GREE\_MULTI21\_B\_BROCHURE\_062217