



Air Conditioning & Heating

SSZ16

HIGH-EFFICIENCY HEAT PUMPS

UP TO 16 SEER

SUBMITTAL DATA FORM

Job Name _____

Location _____

Purchaser _____

Order No. _____

Engineer _____

Unit No. _____

Model No. _____

Unit Designation _____

Performance Data Certified By: _____



Standard Features

- R-410A chlorine-free refrigerant
- High-efficiency Copeland® scroll compressor
Single-Stage — 2 through 4 tons; Two-Stage — 5 tons
- High- and low-pressure switches
- High-quality compressor sound blanket
- 850 RPM condenser fan motor
- Liquid refrigerant return protection
- Factory-installed, bi-flow liquid line filter drier
- Service valves with sweat connections and gauge ports
- Copper tube/enhanced aluminum fin coil
- Reliable time-initiated, temperature-terminated defrost control
- Contactor with lug connection
- Ground lug connection
- AHRI Certified; ETL Listed

Cabinet Features

- Goodman® brand sound control top design
- Steel louver coil guard
- Heavy-gauge galvanized-steel cabinet
- Attractive Architectural Gray powder-paint finish with 500-hour salt-spray approval
- Top and side compressor and tubing access
- Service ports and controls are accessible while unit is operating
- When properly anchored, meets the 2001 Florida Building Code unit integrity requirements for hurricane-type winds. (Anchor bracket kits available.)



* Complete warranty details available from your local dealer or at www.goodmanmfg.com. To receive the Lifetime Compressor Limited Warranty (good for as long as you own your home) and 10-Year Parts Limited Warranty, online registration must be completed within 60 days of installation. Online registration is not required in California or Québec.

PERFORMANCE DATA FOR SPLIT SYSTEM

OUTDOOR UNIT: _____

Cooling Performance

Total Capacity _____ MBH
 Sensible Capacity _____ MBH
 Outdoor Design TMP _____ °F DB / WB
 Air Temp entering _____
 Evaporator Coil _____ °F
 Power Input Required _____ kW
 (less blower motor)

Heating Performance

Total Heating Capacity _____ kW
 _____ BTU/h

INDOOR UNIT: _____

Supply Air Blower Performance

Total Supply Air _____ CFM
 Ext. Static Pressure _____ IWG
 Blower Speed _____ RPM
 Power Output Required _____ BHP
 Motor Ratings _____ HP
 Power Input Required _____ kW

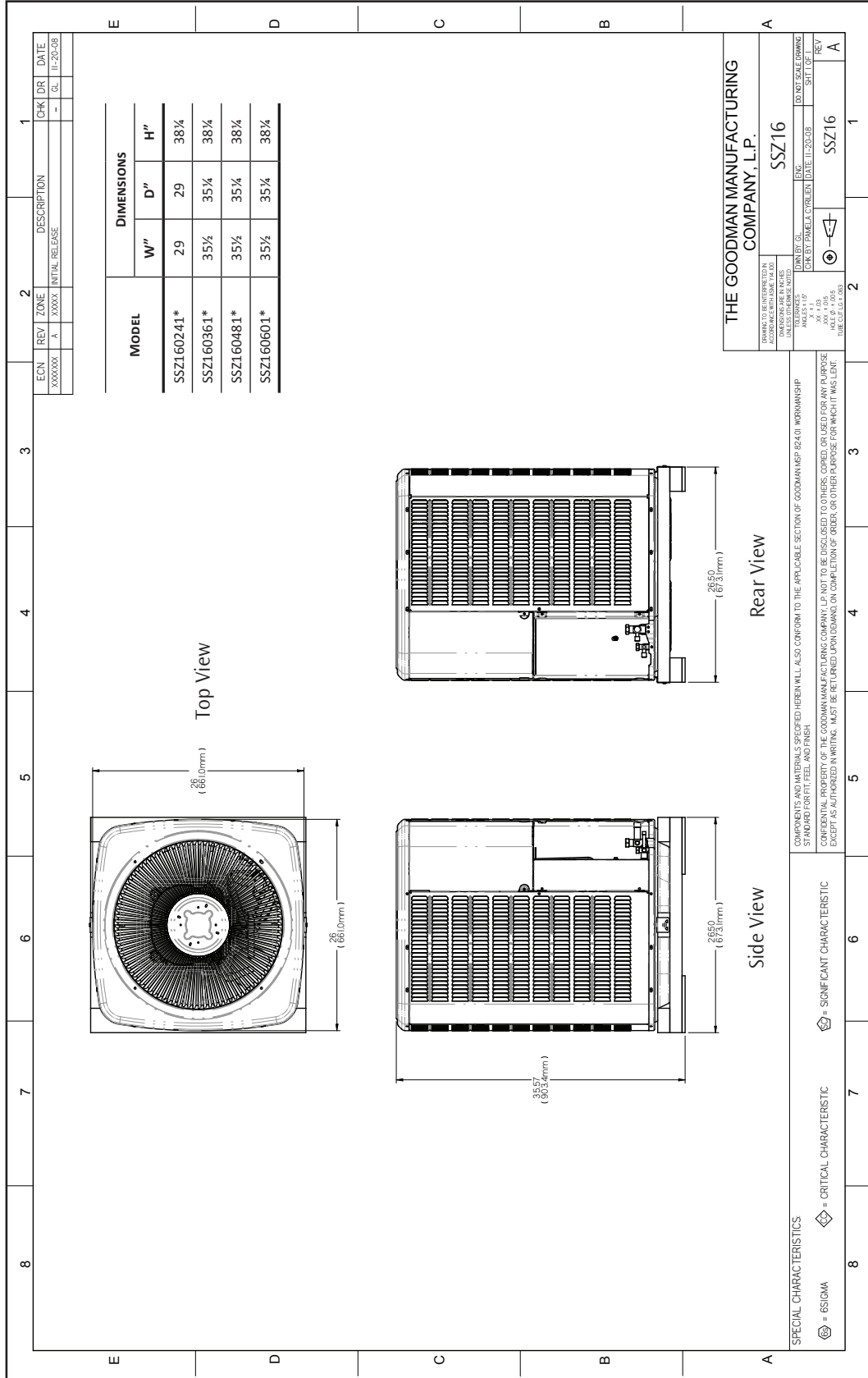
Electrical Data

Power Supply _____
 Total Unit Amps _____

Max Overcurrent Device:
 Fuse _____ Breaker _____ Amps _____

NOTES

CERTIFIED DIMENSIONS



ACCESSORIES LIST

MODEL	DESCRIPTION	SSZ16 024	SSZ16 036	SSZ16 048	SSZ16 060	v
ABK-20	Anchor Bracket Kit*	X	X	X	X	
ASC-01	Anti-Short Cycle Kit	X	X	X	X	
CSR-U-1	Hard-start Kit	X	X	---	---	
CSR-U-2	Hard-start Kit	---	X	X	X	
CSR-U-3	Hard-start Kit	---	---	X	X	
FSK01A ¹	Freeze Protection Kit	X	X	X	X	
LAKT01A	Low-Ambient Kit	X	X	X	X	
OT18-60A ²	Outdoor Thermostat w/ Lockout Stat	X	X	X	X	
TX2N4 ³	TXV Kit	X	---	---	---	
TX3N4 ³	TXV Kit	---	X	---	---	
TX5N4 ³	TXV Kit	---	---	X	X	

* Contains 20 brackets; four brackets needed to anchor unit to pad

¹ Installed on indoor coil

² Required for heat pump applications where ambient temperatures fall below 0° F with 50% or higher relative humidity.

³ Field-installed, non-bleed, expansion valve kit — Condensing units and heat pumps with reciprocating compressors require the use of start-assist components when used in conjunction with an indoor coil using a non-bleed thermal expansion valve refrigerant metering device.