



Air Conditioning & Heating

SUBMITTAL DATA FORM

Job Name _____

Location _____

Purchaser _____

Order No. _____

Engineer _____

Unit No. _____

Model No. _____

Unit Designation _____

Performance Data Certified By: _____

GSZ13

3-, 4-, & 5-Ton

LIGHT COMMERCIAL

SPLIT SYSTEM HEAT PUMPS



Standard Features

- R-410A chlorine-free refrigerant
- Energy-efficient scroll compressor
- Low-pressure switch
- Liquid refrigerant return protection
- Factory-installed, bi-flow liquid line filter dryer
- Service valves with sweat connections and easy-access gauge ports
- Copper tube/enhanced aluminum fin coil
- Reliable time-initiated, temperature-terminated defrost control
- Contactor with lug connection
- Ground lug connection
- Complies with ASHRAE Standard 90.1
- AHRI Certified; ETL Listed

Cabinet Features

- Goodman® sound control top design
- Steel louver coil guard
- Heavy-gauge galvanized-steel cabinet
- Attractive Architectural Gray powder-paint finish with 500-hour salt-spray approval
- Top and side maintenance access
- Service ports and controls are accessible while unit is operating
- When properly anchored, meets the 2001 Florida Building Code unit integrity requirements for hurricane-type winds (Anchor bracket kits available.)

Contents

- Performance Data
- Certified Dimensions
- Accessories List



*Complete warranty details available at www.goodmanmfg.com.

PERFORMANCE DATA FOR SPLIT SYSTEM

Outdoor Unit: _____

Cooling Performance

Total Capacity _____ MBH

Sensible Capacity _____ MBH

Outdoor Design TMP _____ °F DB / WB

Air Temp entering _____

Evaporator Coil _____ °F

Power Input Required _____ kW
(less blower motor)

Heating Performance

Total Heating Capacity _____ kW
_____ BTU/h

Indoor Unit: _____

Supply Air Blower Performance

Total Supply Air _____ CFM

Ext. Static Pressure _____ IWG

Blower Speed _____ RPM

Power Output Required _____ BHP

Motor Ratings _____ HP

Power Input Required _____ kW

Electrical Data

Power Supply _____

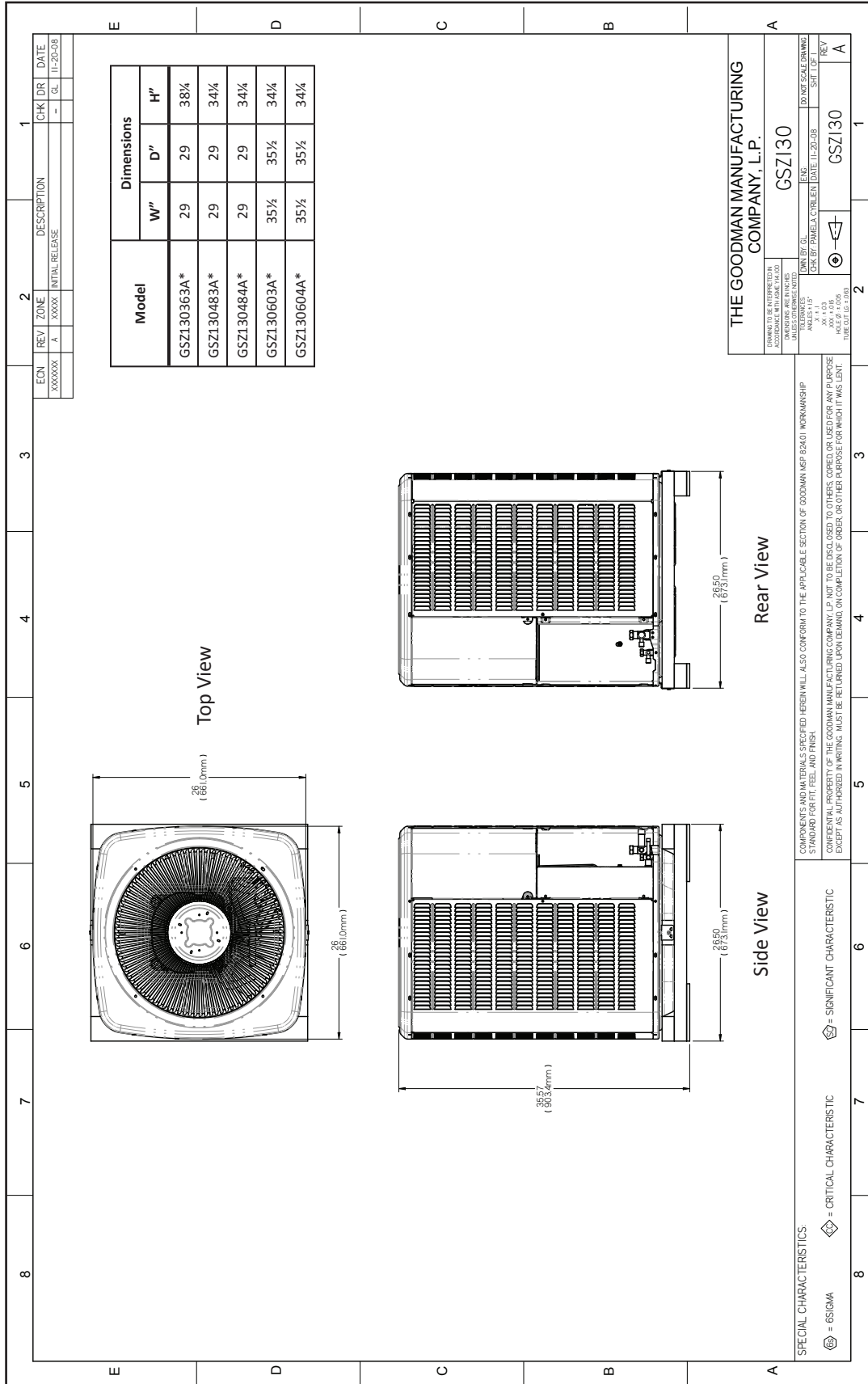
Total Unit Amps _____

Max Overcurrent Device:

Fuse _____ Breaker _____ Amps _____

NOTES

CERTIFIED DIMENSIONS



ACCESSORIES LIST

Model #	Description	GSZ13 0363A*	GSZ13 0483A*	GSZ13 0484A*	GSZ13 0603A*	GSZ13 0604A*	Ship Weight	√
0130R00000S	Low-pressure Switch Kit	X	X	X	X	X	2 Lbs.	
ABK-20	Anchor Bracket Kit ^	X	X	X	X	X	1 Lb.	
ASC-01	Anti-Short Cycle Kit	X	X	X	X	X	1 Lb.	
AFE18-60A	All-fuel Kit	X	X	X	X	X	1 Lb.	
CSR-U-1	Hard-start Kit	X					½ Lb.	
CSR-U-2	Hard-start Kit		X	X	X	X	1 Lb.	
CSR-U-3	Hard-start Kit		X	X	X	X	5 Lbs.	
LAKT-01	Low-ambient Kit	X	X	X	X	X		
FSK01A ¹	Freeze Protection Kit	X	X	X	X	X	1 Lb.	
OT18-60A ²	Outdoor Thermostat	X	X	X	X	X	50 Lbs.	
OT/EHR18-60	Emergency Heat Relay kit	X	X	X	X	X	2 Lbs.	
TX3N4 ²	TXV Kit	X					2 Lbs.	
TX5N4 ²	TXV Kit		X	X	X	X	2 Lbs.	

^ Contains 20 brackets; four brackets needed to anchor unit to pad

¹ Installed on indoor coil

² Required for heat pump applications where ambient temperatures fall below 0°F with 50% or higher relative humidity.

³ Field-installed, non-bleed, expansion valve kit — Condensing units and heat pumps with reciprocating compressors require the use of start-assist components when used in conjunction with an indoor coil using a non-bleed thermal expansion valve refrigerant metering device or liquid line solenoid kit.