



Air Conditioning & Heating

# GSH10 COMMERCIAL SPLIT SYSTEM HEAT PUMPS

## 7½ & 10 TONS

## 10 EER

### SUBMITTAL DATA FORM

Job Name \_\_\_\_\_

Location \_\_\_\_\_

Purchaser \_\_\_\_\_

Order No. \_\_\_\_\_

Engineer \_\_\_\_\_

Unit No. \_\_\_\_\_

Model No. \_\_\_\_\_

Unit Designation \_\_\_\_\_

Performance Data Certified By: \_\_\_\_\_



#### Standard Features

- Energy-efficient compressor with internal pressure relief valve
- High-capacity, steel-cased, bi-flow heat pump filter dryer
- Liquid refrigerant return protection
- Check flowwater heating mode expansion device
- Reliable, time-initiated, temperature-terminated defrost control
- Low-pressure switch
- Discharge line muffler
- Brass liquid and suction line service valves mounted at a 90° angle with sweat connections and service ports
- High-efficiency copper tube/aluminum fin coil
- Complies with ASHRAE Standard 90.1
- ETL Listed

#### Cabinet Features

- Goodman brand sound control top design
- Steel louver coil guard protects coil from damage and adds strength to the unit
- Heavy-gauge, galvanized-steel cabinet
- Attractive Architectural Gray powder-paint finish with 500-hour salt-spray approval
- When properly anchored, meets the 2001 Florida Building Code unit integrity requirements for hurricane-type winds (Anchor bracket kits available.)

#### Contents

- Performance Data
- Certified Dimensions
- Accessories List



\* Complete warranty details available from your local dealer or at [www.goodmanmfg.com](http://www.goodmanmfg.com).

# PERFORMANCE DATA FOR SPLIT SYSTEM

**OUTDOOR UNIT:** \_\_\_\_\_

**Cooling Performance**

Total Capacity \_\_\_\_\_ MBH  
 Sensible Capacity \_\_\_\_\_ MBH  
 Outdoor Design TMP \_\_\_\_\_ °F DB / WB  
 Air Temp entering \_\_\_\_\_  
 Evaporator Coil \_\_\_\_\_ °F  
 Power Input Required \_\_\_\_\_ kW  
 (less blower motor)

**Heating Performance**

Total Heating Capacity \_\_\_\_\_ kW  
 \_\_\_\_\_ BTU/h

**INDOOR UNIT:** \_\_\_\_\_

**Supply Air Blower Performance**

Total Supply Air \_\_\_\_\_ CFM  
 Ext. Static Pressure \_\_\_\_\_ IWG  
 Blower Speed \_\_\_\_\_ RPM  
 Power Output Required \_\_\_\_\_ BHP  
 Motor Ratings \_\_\_\_\_ HP  
 Power Input Required \_\_\_\_\_ kW

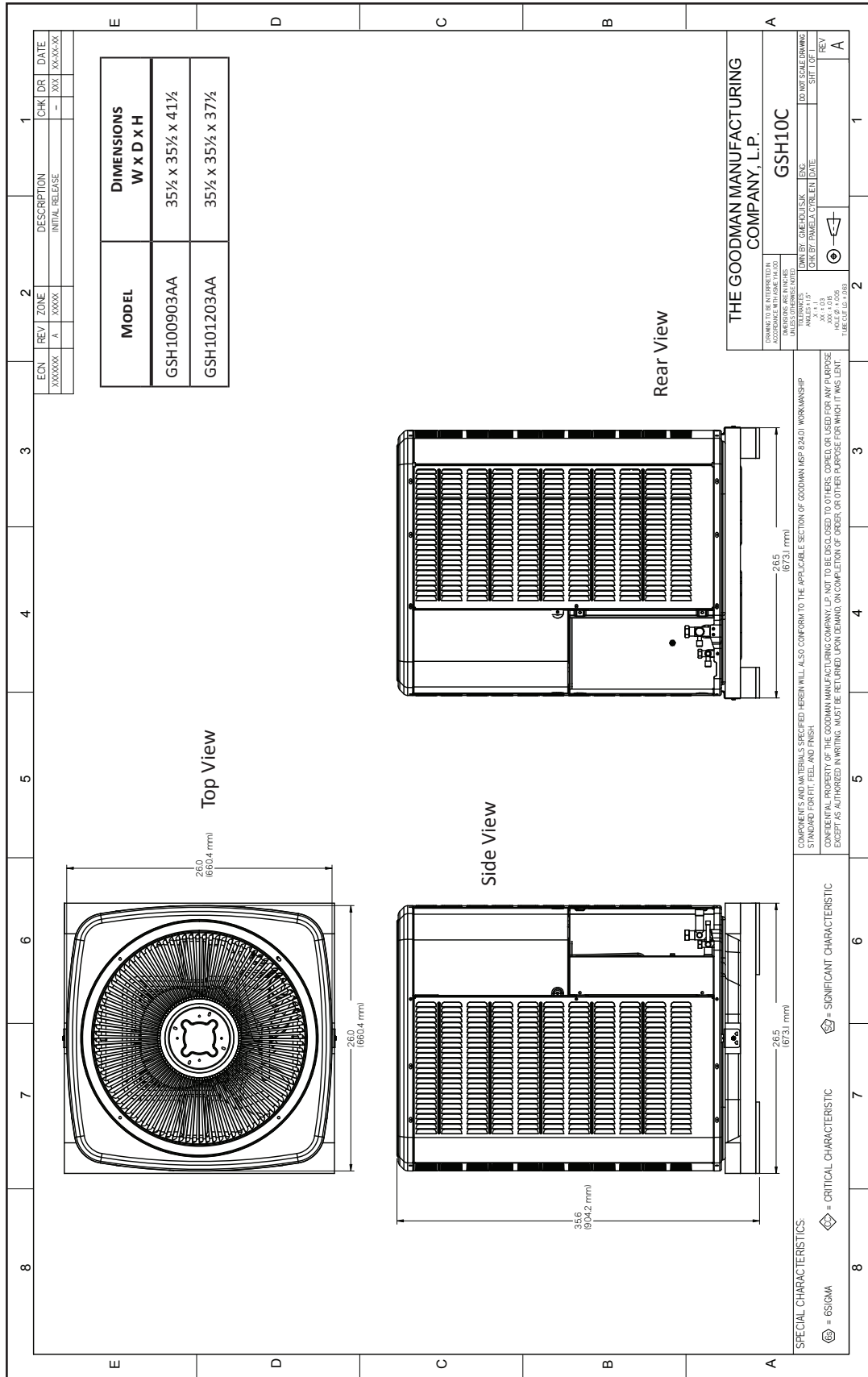
**Electrical Data**

Power Supply \_\_\_\_\_  
 Total Unit Amps \_\_\_\_\_

**Max Overcurrent Device:**  
 Fuse \_\_\_\_\_ Breaker \_\_\_\_\_ Amps \_\_\_\_\_

## NOTES

# CERTIFIED DIMENSIONS



## ACCESSORIES LIST

MODEL	DESCRIPTION	√
ABK-20	Anchor Bracket Kit •	
AFE18-60A	All-fuel Kit	
ASC01	Anti-Short Cycle Kit	
FSK01A <sup>1</sup>	Freeze Protection Kit	
OT/EHR18-60	Emergency Heat Relay kit	
OT18-60A <sup>2</sup>	Outdoor Thermostat with Lockout Stat	

• Contains 20 brackets; four brackets needed to anchor unit to pad

<sup>1</sup> Installed on indoor coil

<sup>2</sup> Required for heat pump applications where ambient temperatures fall below 0 °F with 50% or higher relative humidity.

