



Air Conditioning & Heating

# GMS8

## SINGLE-STAGE/MULTI-SPEED GAS FURNACE

### SUBMITTAL DATA FORM

Job Name \_\_\_\_\_

Location \_\_\_\_\_

Purchaser \_\_\_\_\_

Order No. \_\_\_\_\_

Engineer \_\_\_\_\_

Unit No. \_\_\_\_\_

Model No. \_\_\_\_\_

Unit Designation \_\_\_\_\_

Performance Data Certified By: \_\_\_\_\_

#### Standard Features

- Dual-diameter tubular heat exchanger
- Single-stage combination redundant gas valve
- Norton hot surface mini-igniter
- Quiet multi-speed direct-drive circulator blower motor
- Furnace control board with self-diagnostics and low-voltage terminal block
- Quiet single-speed, induced-draft blower

#### Cabinet Features

- Foil-faced insulation lines the heat exchanger compartment
- Factory sealed to achieve 2% or less leakage rate at 1.0" water gauge external duct static pressure
- Designed for multi-position installation: upflow, horizontal left or right
- Coil and furnace fit flush for most installations



\* Complete warranty details available from your local dealer or at [www.goodmanmfg.com](http://www.goodmanmfg.com). To receive the Lifetime Heat Exchanger Limited Warranty (good for as long as you own your home) and 10-Year Parts Limited Warranty, online registration must be completed within 60 days of installation. Online registration is not required in California or Québec.

### PERFORMANCE DATA FOR SYSTEM

**GAS FURNACE:** \_\_\_\_\_

**Heating Performance**

Input Capacity \_\_\_\_\_ MBH  
 Output Capacity \_\_\_\_\_ MBH  
 Air Temp. Rise \_\_\_\_\_ °F

**Supply Air Blower Performance**

Total Supply Air \_\_\_\_\_ CFM  
 Ext. Static Pressure \_\_\_\_\_ IWG  
 Blower Speed \_\_\_\_\_ RPM  
 Power Output Required \_\_\_\_\_ BHP  
 Motor Ratings \_\_\_\_\_ HP  
 Power Input Required \_\_\_\_\_ kW

**Electrical Data**

Power Supply \_\_\_\_\_  
 Total Unit Amps \_\_\_\_\_  
 Minimum Wire Size \_\_\_\_\_ AWG

**Max Overcurrent Device:**  
 Fuse \_\_\_\_\_ Breaker \_\_\_\_\_ Amps \_\_\_\_\_

**OUTDOOR UNIT:** \_\_\_\_\_

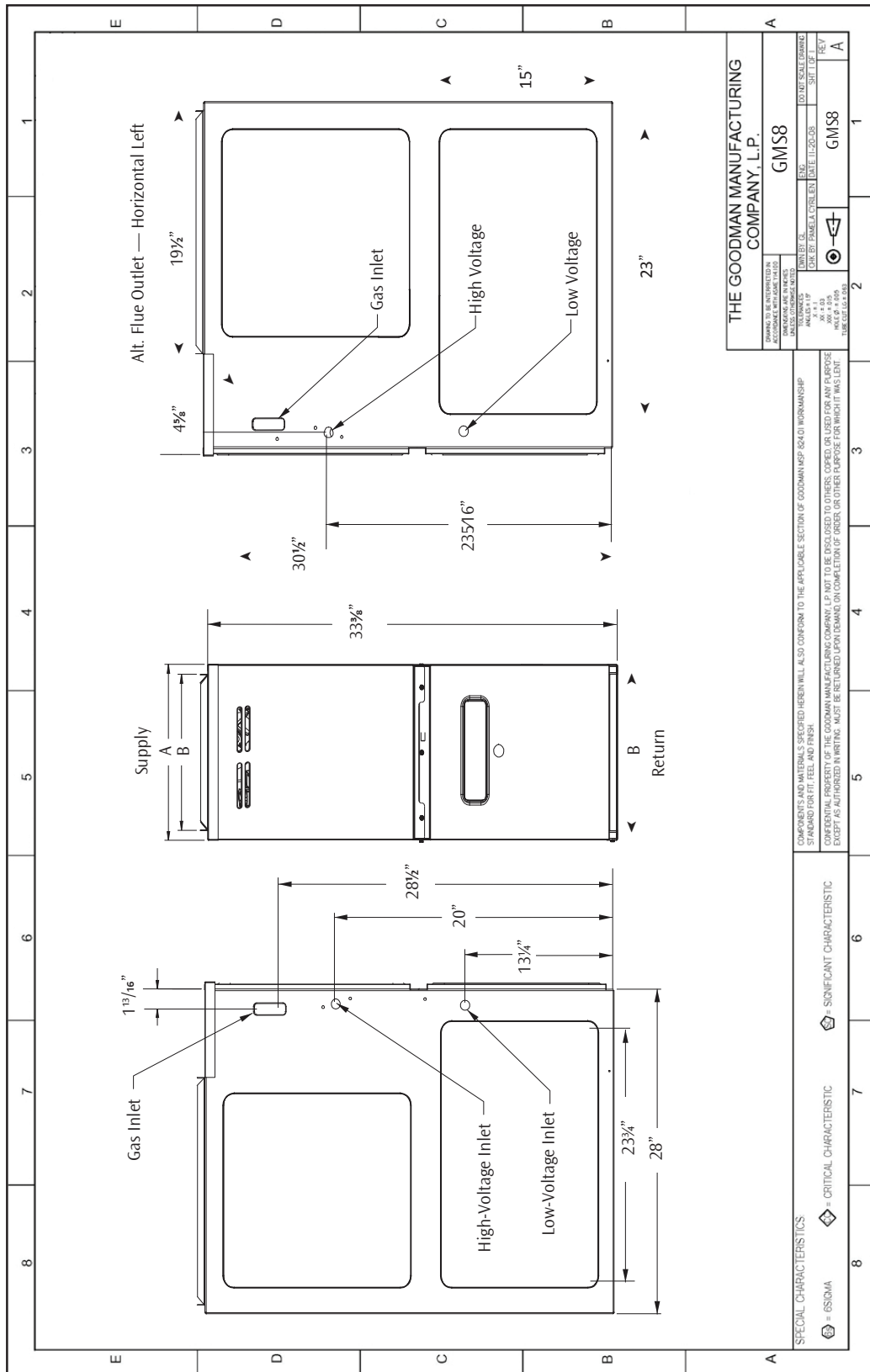
**Cooling Performance**

Total Capacity \_\_\_\_\_ MBH  
 Sensible Capacity \_\_\_\_\_ MBH  
 Outdoor Design TMP \_\_\_\_\_ °F DB / WB  
 Air Temp entering \_\_\_\_\_ °F  
 Evaporator Coil \_\_\_\_\_ °F  
 Power Input Required \_\_\_\_\_ kW  
 (less blower motor)

### NOTES



**CERTIFIED DIMENSIONS**



SPECIAL CHARACTERISTICS  
 ⬡ = GS/MA ⬢ = CRITICAL CHARACTERISTIC ⬠ = SIGNIFICANT CHARACTERISTIC

COMPONENTS AND MATERIALS SPECIFIED HEREIN WILL ALSO CONFORM TO THE APPLICABLE SECTION OF GOODMAN MEP-624.0 WORKMANSHIP STANDARD FOR FIT, FEEL AND FINISH.  
 CONFIDENTIAL PROPERTY OF THE GOODMAN MANUFACTURING COMPANY, L.P. NOT TO BE DISCLOSED TO OTHERS, COPIED, OR USED FOR ANY PURPOSE EXCEPT AS AUTHORIZED IN WRITING. MUST BE RETURNED UPON DEMAND ON COMPLETION OF ORDER OR OTHER PURPOSE FOR WHICH IT WAS LENT.

MODEL	A	B
GMS80805C**	21"	19 1/2"
GMS81005C**	21"	19 1/2"
GMS81205D**	24 1/2"	23"
GMS81405D**	24 1/2"	23"

MODEL	A	B
GMS80403A**	14"	12 1/2"
GMS80603A**	14"	12 1/2"
GMS80604B**	17 1/2"	16"
GMS80804B**	17 1/2"	16"

**ACCESSORIES LIST**

MODEL	DESCRIPTION	v
LPT-03 <sup>1</sup>	LP Conversion Kit	
HA02	High-Altitude Natural Gas Kit (7,000+ ft)	
AFE18-60A	Fossil Fuel Kit	
MVK-01 <sup>2</sup>	Masonry Vent Kit	
MVK-02 <sup>2</sup>	Masonry Vent Kit (for GMS81205D* only)	
FSRKG-14/17/21/23	Noise Reduction Kits	
FTK04	Twining Kit	

<sup>1</sup> White-Rodgers and Honeywell valves

<sup>2</sup> Upflow applications only