



Air Conditioning & Heating

GMH8

MULTI-POSITION, DUAL\$AVER MULTI-SPEED GAS FURNACE

SUBMITTAL DATA FORM

Job Name _____

Location _____

Purchaser _____

Order No. _____

Engineer _____

Unit No. _____

Model No. _____

Unit Designation _____

Performance Data Certified By: _____



Standard Features

- Dual-diameter tubular heat exchanger
- Two-stage gas valve Dual\$aver™ technology that allows the installer to activate the two-stage valve with the flip of a dipswitch
- 110V Silicon Nitride igniter
- Quiet four-speed direct-drive circulating blower motor
- Furnace control board with self-diagnostics, color-coded low-voltage terminals and provisions for electronic air cleaner and 24-volt humidifiers
- Control board stores the last five diagnostic codes in memory; simple push-button activation outputs the fault history to a flashing red LED
- Low constant fan allows homeowner to activate the low heat speed to efficiently circulate air throughout the home
- Self-adjusting feature automatically adjusts furnace to high- or low-stage operation based on outside temperature without an outdoor temperature sensor

Cabinet Features

- Fully insulated, heavy-gauge steel cabinet with durable baked-enamel finish
- Foil-faced insulation lines the heat exchanger compartment
- Factory-sealed to achieve 2% or less leakage rate at 1.0" water gauge external duct static pressure
- Designed for multi-position installation: upflow, horizontal left or right
- Removable bottom for side or bottom return applications
- Convenient left or right connection for gas/electric service
- Coil and furnace fit flush for most installations



* Complete warranty details available from your local dealer or at www.goodmanmfg.com. To receive the Lifetime Heat Exchanger Limited Warranty (good for as long as you own your home), 10-Year Unit Replacement Limited Warranty and 10-Year Parts Limited Warranty, online registration must be completed within 60 days of installation. Online registration is not required in California or Québec.

PERFORMANCE DATA FOR SYSTEM

GAS FURNACE: _____

Heating Performance

Input Capacity _____ MBH
 Output Capacity _____ MBH
 Air Temp. Rise _____ °F

Supply Air Blower Performance

Total Supply Air _____ CFM
 Ext. Static Pressure _____ IWG
 Blower Speed _____ RPM
 Power Output Required _____ BHP
 Motor Ratings _____ HP
 Power Input Required _____ kW

Electrical Data

Power Supply _____
 Total Unit Amps _____
 Minimum Wire Size _____ AWG

Max Overcurrent Device:
 Fuse _____ Breaker _____ Amps _____

OUTDOOR UNIT: _____

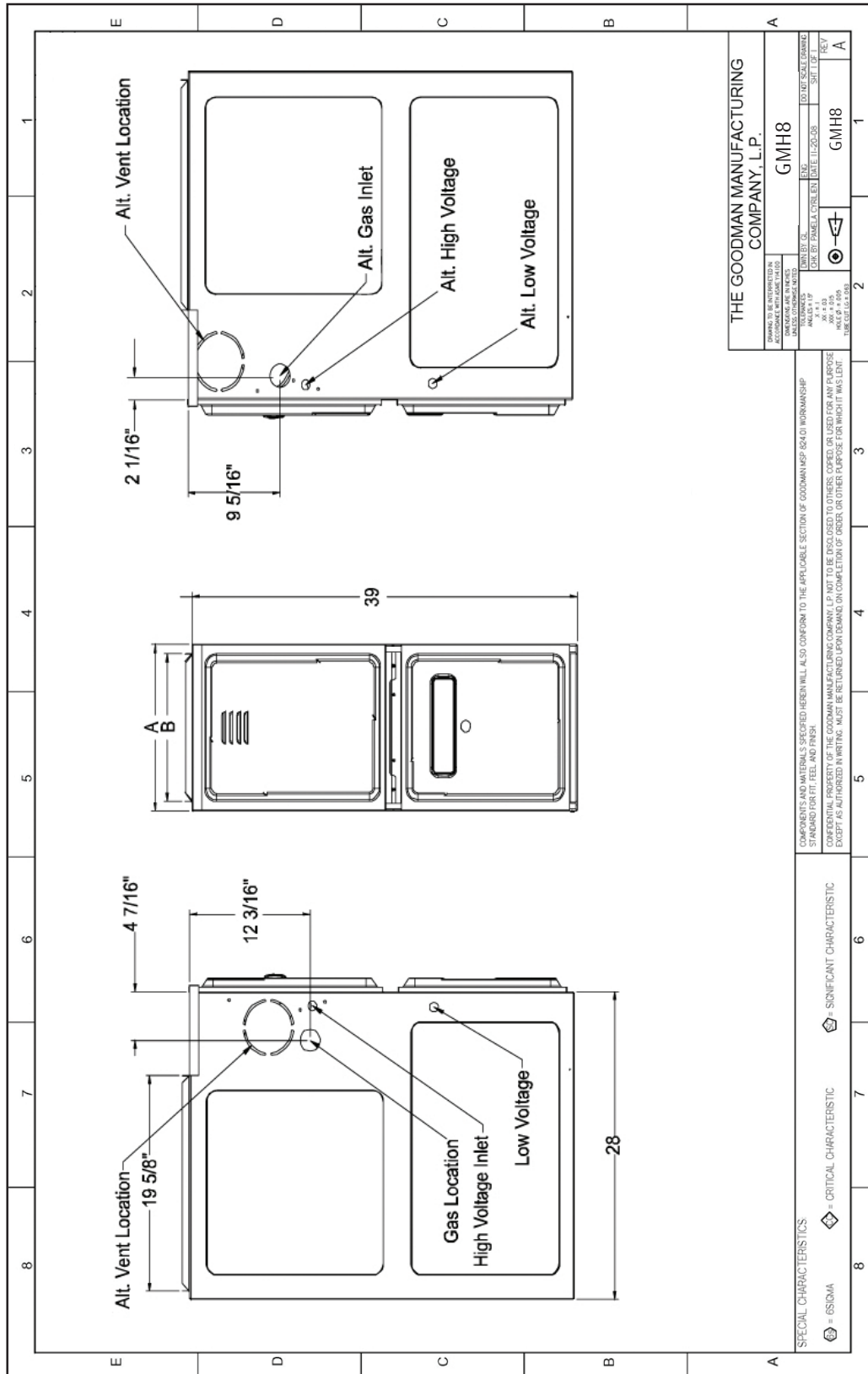
Cooling Performance

Total Capacity _____ MBH
 Sensible Capacity _____ MBH
 Outdoor Design TMP _____ °F DB / WB
 Air Temp entering _____ °F
 Evaporator Coil _____ °F
 Power Input Required _____ kW
 (less blower motor)

NOTES



CERTIFIED DIMENSIONS



MODEL	A	B
GMH80804B**	17 1/2"	16"
GMH80805C**	21"	19 1/2"
GMH81005C**	21"	19 1/2"
GMH81205D**	24 1/2"	23"

MODEL	A	B
GMH80403A**	14"	12 1/2"
GMH80603A**	14"	12 1/2"
GMH80604B**	17 1/2"	16"
GMH80803B**	17 1/2"	16"

ACCESSORIES LIST

MODEL	DESCRIPTION	GMH8 0403*	GMH8 0603*	GMH8 0604*	GMH8 0803*	GMH8 0804*	GMH8 0805*	GMH8 1005*	GMH8 1205*	✓
LPM-06	LP Conversion Kit (Springs & Orifice) ¹	✓	✓	✓	✓	✓	✓	✓	✓	
HA02	High-Altitude Natural Gas Kit (+7,000')	✓	✓	✓	✓	✓	✓	✓	✓	
FTK04	Twinning Kit	✓	✓	✓	✓	✓	✓	✓	✓	
FSRKG-14/17	Noise Reduction Kits	✓	✓	✓	✓	✓	✓	✓	✓	
FSRKG-21/24	Noise Reduction Kits	✓	✓	✓	✓	✓	✓	✓	✓	
MVK-01 ²	Masonry Vent Kits	✓	✓	✓	✓	✓	✓	✓	✓	
MVK-02 ²	Masonry Vent Kits								✓	
AFE18-60A	Fossil Fuel Kit	✓	✓	✓	✓	✓	✓	✓	✓	

¹ Honeywell or White-Rodgers valves

² Upflow applications only