



Air Conditioning & Heating

GKS9

SINGLE-STAGE/MULTI-SPEED GAS FURNACE

SUBMITTAL DATA FORM

Job Name _____

Location _____

Purchaser _____

Order No. _____

Engineer _____

Unit No. _____

Model No. _____

Unit Designation _____

Performance Data Certified By: _____

Standard Features

- Dual-diameter tubular heat exchanger
- Single-stage combination redundant gas valve
- Hot surface igniter and patented adaptive learning control for maximum igniter life
- Energy-saving, quiet four-speed direct-drive circulator blower motor
- Furnace control board with self-diagnostics and low-voltage terminal block
- Dual-certified for sealed combustion direct vent (2-pipe) or non-direct vent (1-pipe) applications
- Quiet, single-speed induced draft blower
- Complies with California NOx emissions standards

Cabinet Features

- Foil-faced insulation lines the heat exchanger
- Designed for upflow installation; can be converted to horizontal left or right with a pressure switch kit (sold separately)
- Easy-to-install top venting is standard
- Airtight solid bottom for side return applications and easy-cut tabs for effortless removal in bottom air inlet applications
- Coil and furnace fit flush for most installations



* Complete warranty details available from your local dealer or at www.goodmanmfg.com. To receive the Lifetime Heat Exchanger Limited Warranty and 10-Year Parts Limited Warranty, online registration must be completed within 60 days of installation. Online registration is not required in California or Québec.

PERFORMANCE DATA FOR SYSTEM

GAS FURNACE: _____

Heating Performance

Input Capacity _____ MBH
 Output Capacity _____ MBH
 Air Temp. Rise _____ °F

Supply Air Blower Performance

Total Supply Air _____ CFM
 Ext. Static Pressure _____ IWG
 Blower Speed _____ RPM
 Power Output Required _____ BHP
 Motor Ratings _____ HP
 Power Input Required _____ kW

Electrical Data

Power Supply _____
 Total Unit Amps _____
 Minimum Wire Size _____ AWG

Max Overcurrent Device:
 Fuse _____ Breaker _____ Amps _____

OUTDOOR UNIT: _____

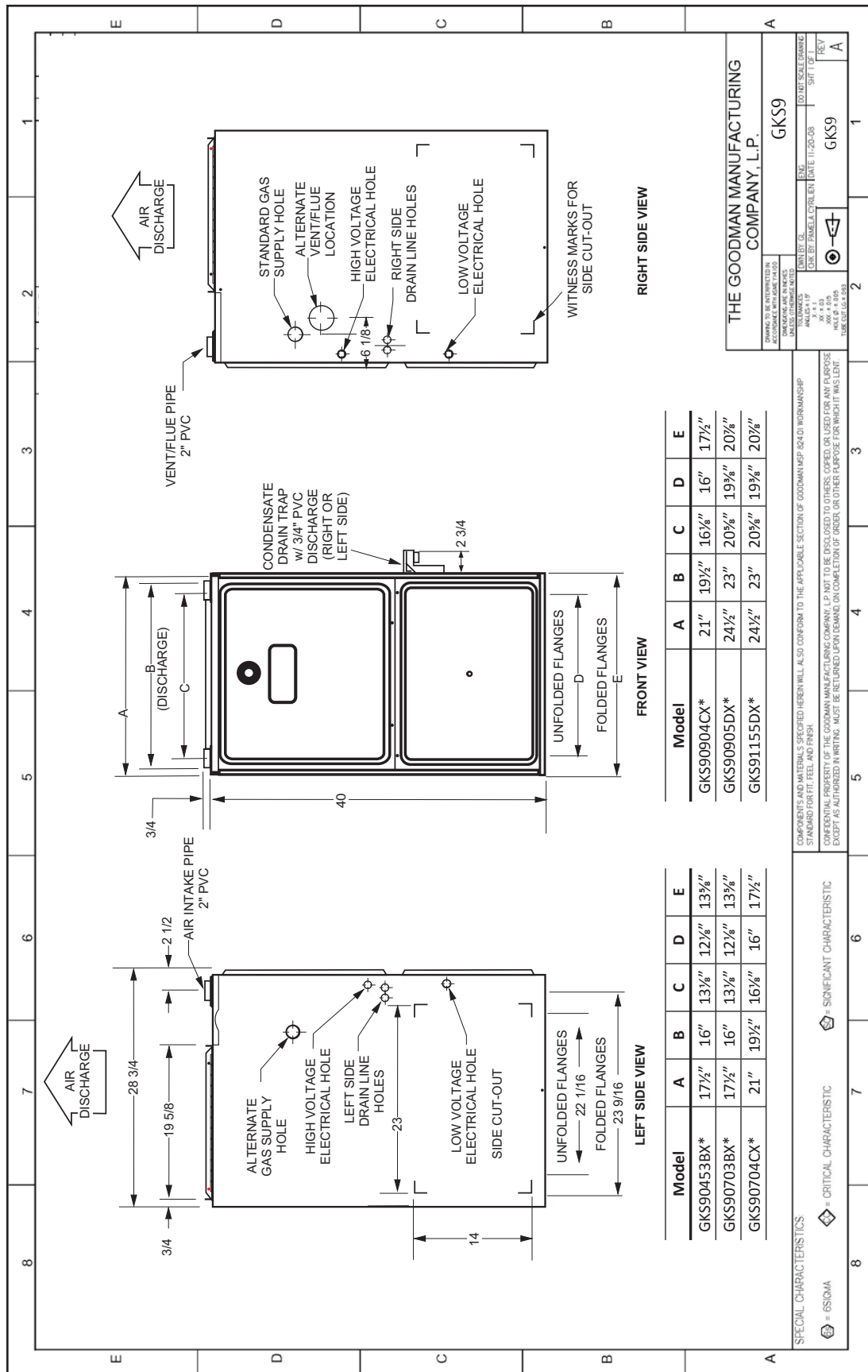
Cooling Performance

Total Capacity _____ MBH
 Sensible Capacity _____ MBH
 Outdoor Design TMP _____ °F DB / WB
 Air Temp entering _____ °F
 Evaporator Coil _____ °F
 Power Input Required _____ kW
 (less blower motor)

NOTES



CERTIFIED DIMENSIONS



THE GOODMAN MANUFACTURING COMPANY, L.P.

GKS9

DATE: 11-20-08

SCALE: 1" = 1'-0"

DRW: PAMELA CRILEN

CHK: PAMELA CRILEN

DATE: 11-20-08

REV: A

SH: 1 OF 1

Model	A	B	C	D	E
GKS90904CX*	21"	19 1/2"	16 1/8"	16"	17 1/2"
GKS90905DX*	24 1/2"	23"	20 7/8"	19 3/4"	20 7/8"
GKS91155DX*	24 1/2"	23"	20 7/8"	19 3/4"	20 7/8"

Model	A	B	C	D	E
GKS90453BX*	17 1/2"	16"	13 3/8"	12 1/8"	13 3/8"
GKS90703BX*	17 1/2"	16"	13 3/8"	12 1/8"	13 3/8"
GKS90704CX*	21"	19 1/2"	16 1/8"	16"	17 1/2"

COMPONENTS AND MATERIALS SPECIFIED HEREIN WILL ALSO CONFORM TO THE APPLICABLE SECTION OF GOODMAN'S R-40 WORKMANSHIP STANDARD FOR FIT, FEEL AND FINISH.

CONFIDENTIAL PROPERTY OF THE GOODMAN MANUFACTURING COMPANY, L.P. NOT TO BE DISCLOSED TO OTHERS, COPIED, OR USED FOR ANY PURPOSE EXCEPT AS AUTHORIZED IN WRITING. MUST BE RETURNED UPON DEMAND ON COMPLETION OF ORDER, OR OTHER PURPOSE FOR WHICH IT WAS LENT.

SPECIAL CHARACTERISTICS

⊠ = CRITICAL CHARACTERISTIC

⊠ = SIGNIFICANT CHARACTERISTIC

ACCESSORIES LIST

ACCESSORY	DESCRIPTION	GKS9 0453BX*	GKS9 0703BX*	GKS9 0704CX*	GKS9 0904CX*	GKS9 0905DX*	GKS9 1155DX*	SHIP WEIGHT	√
LPT-00A	LP Conversion Kit	√	√	√	√	√	√	1 lb	
LPLP01	LP Gas Low Pressure Kit	√	√	√	√	√	√	1 lb	
HALP10	High-Altitude LP Gas Kit	3	3	3	3	3	3	1 lb	
HANG11	High-Altitude Natural Gas Kit	1	1	1	1	1	1	1 lb	
HANG12	High-Altitude Natural Gas Kit	2	2	2	2	2	2	1 lb	
017K000005	Flush-Mount Vent Kit	√	√	√	√	√	√	1.3 lbs	
0270K00012	Horiz. Conversion Pressure Switch Kit	√	√	√	√	√	√	1 lb	
AFE18-60A	Fossil Fuel Kit	√	√	√	√	√	√	1 lb	
FTK-03A	Twinning Kit	√	√	√	√	√	√	1 lb	
GSAS	Electronic Air Cleaner	√	√	√	√	√	√	30± lbs	
GMU	Media Air Cleaner	√	√	√	√	√	√	20 bs	
EFR01	External Filter Rack	√	√	√	√	√	√	5 lbs	
DCVK-20	2" Horiz./ Vert. Concentric Vent Kit	√	√	√	-----	-----	-----	5 lbs	
DCVK-30	3" Horiz./ Vert. Concentric Vent Kit	-----	-----	-----	√	√	√	8.5 lbs	

√ Available for this model 1 7,001' to 9,000' 2 9,001' to 11,000' 3 7,001' to 11,000'

NOTE: ALL INSTALLATIONS ABOVE 7,000' REQUIRE A PRESSURE SWITCH CHANGE. FOR INSTALLATION IN CANADA, FURNACES ARE CERTIFIED ONLY TO 4,500'.