



Air Conditioning & Heating

DSZC16

HIGH-EFFICIENCY, COMFORTNET-COMPATIBLE SPLIT SYSTEM HEAT PUMP UP TO 16 SEER

SUBMITTAL DATA FORM

Job Name _____

Location _____

Purchaser _____

Order No. _____

Engineer _____

Unit No. _____

Model No. _____

Unit Designation _____

Performance Data Certified By: _____

Standard Features

- R-410A chlorine-free refrigerant
- Two-Stage Copeland® UltraTech scroll compressor
- High-density foam compressor sound blanket
- ComfortNet™ Communications System compatible
- Expanded ComfortAlert™ diagnostics built in
- Set-up capable with two low-voltage wires to outdoor unit
- Diagnostic indicator lights and storage of six fault codes
- Color-coded terminal strip for non-communicating set-up
- SmartShift™ technology to ensure quiet, reliable defrost
- Factory-installed bi-flow liquid line filter drier
- Factory-installed suction line accumulator
- Factory-installed compressor crankcase heater
- Factory-installed high-capacity muffler
- Factory-installed coil and ambient temperature sensors
- High- and low-pressure switches
- Fully charged for 15' of tubing length
- Two-speed quiet condenser fan motor
- Sweat connection service valves with easy access to gauge ports
- AHRI Certified; ETL Listed

Cabinet Features

- Wire fan discharge grille
- Steel louver coil guard
- Baked-on powder paint finish
- Rust-resistant coated screws
- Compact footprint
- Top and side maintenance access
- Single-panel access to controls with space provided for field-installed accessories
- When properly anchored, meets 2010 Florida Building Code unit integrity requirements for hurricane-type winds (Anchor bracket kits available.)



* Complete warranty details available from your local dealer or at www.goodmanmfg.com. To receive the Lifetime Compressor Limited Warranty, 10-Year Unit Replacement Limited Warranty and 10-Year Parts Limited Warranty, online registration must be completed within 60 days of installation. Online registration is not required in California or Québec.

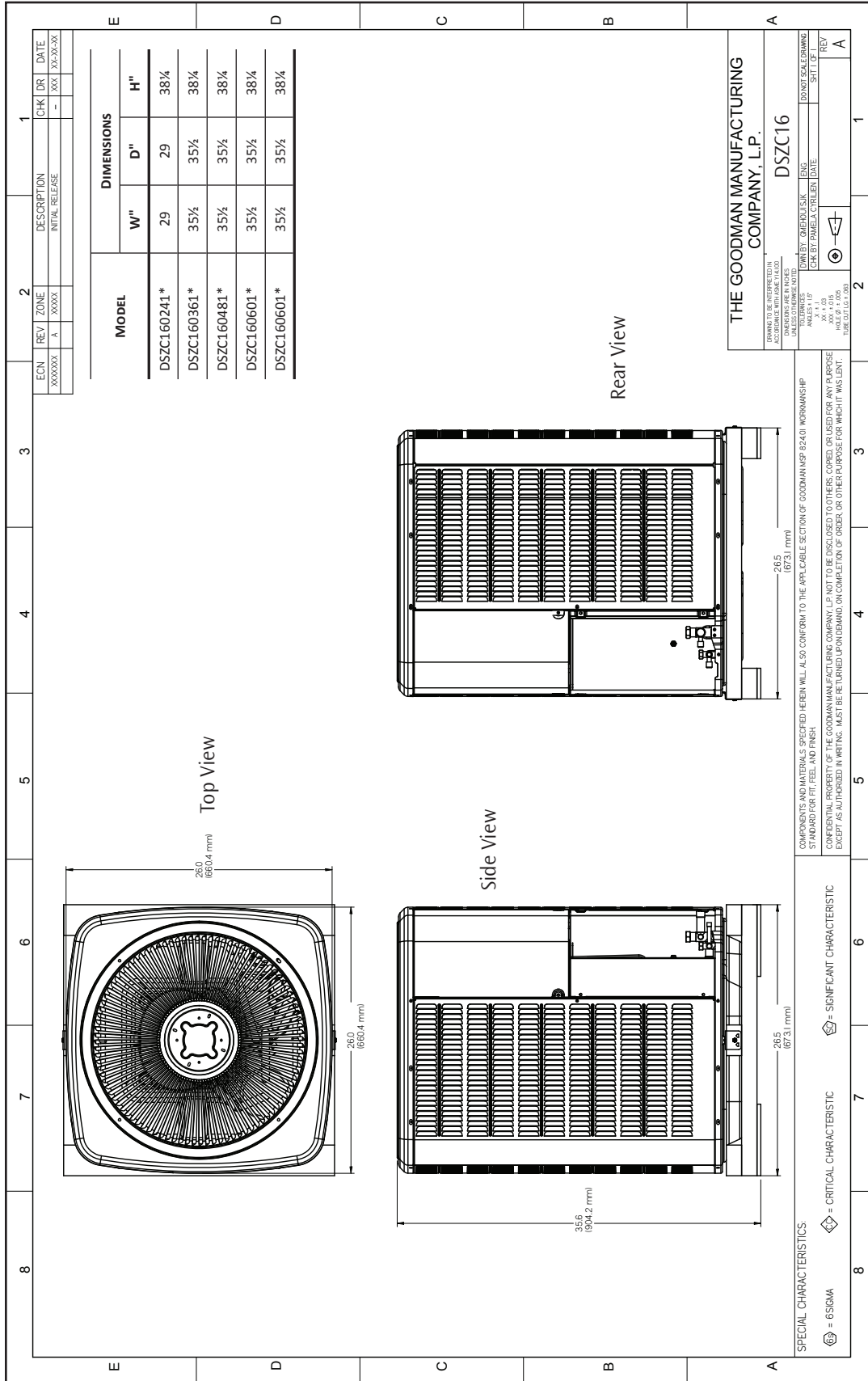
PERFORMANCE DATA FOR SPLIT SYSTEM

OUTDOOR UNIT: _____	
Cooling Performance	
Total Capacity	_____ MBH
Sensible Capacity	_____ MBH
Outdoor Design TMP	_____ °F DB / WB
Air Temp entering	
Evaporator Coil	_____ °F
Power Input Required (less blower motor)	_____ kW

INDOOR UNIT: _____	
Heating Performance	
Total Heating Capacity	_____ kW
	_____ BTU/h
Supply Air Blower Performance	
Total Supply Air	_____ CFM
Ext. Static Pressure	_____ IWG
Blower Speed	_____ RPM
Power Output Required	_____ BHP
Motor Ratings	_____ HP
Power Input Required	_____ kW
Electrical Data	
Power Supply	_____
Total Unit Amps	_____
Max Overcurrent Device:	
Fuse _____ Breaker _____ Amps _____	

NOTES

CERTIFIED DIMENSIONS



ACCESSORIES LIST

MODEL	DESCRIPTION	DSZC16 024	DSZC16 036	DSZC16 048	DSZC16 060	v
ABK-20	Anchor Bracket Kit ⁰					
B1141643 ¹	24V Transformer	X	X	X	X	
CSR-U-1	Hard-start Kit	X	X	X		
CSR-U-3	Hard-start Kit				X	
FSK01A ²	Freeze Protection Kit	X	X	X	X	
OT18-60A ³	Outdoor Thermostat/Lockout Thermostat	X	X	X	X	
TX2N4 ⁴	TXV Kit					
TX2N4A ⁴	TXV Kit	X				
TX3N4 ⁴	TXV Kit		X			
TX5N4 ⁴	TXV Kit			X	X	

⁰ Contains 20 brackets; four brackets needed to anchor unit to pad

¹ Available in 24V legacy mode only. This feature is integrated in the communicating mode.

² Installed on indoor coil

³ Available in 24V legacy mode only. This feature is integrated in the communicating mode. Required for heat pump applications where ambient temperature falls below 0 OF with 50% or higher relative humidity.

⁴ Condensing units and heat pumps with reciprocating compressors require the use of start-assist components when used in conjunction with an indoor coil using a non-bleed thermal expansion valve refrigerant metering device or liquid line solenoid kit. The TXV should always be sized based on the tonnage of the outdoor unit.