



Air Conditioning & Heating

DSXC16

HIGH-EFFICIENCY,

COMFORTNET-COMPATIBLE

SPLIT SYSTEM AIR CONDITIONER

UP TO 16 SEER

SUBMITTAL DATA FORM

Job Name _____

Location _____

Purchaser _____

Order No. _____

Engineer _____

Unit No. _____

Model No. _____

Unit Designation _____

Performance Data Certified By: _____

Standard Features

- R-410A chlorine-free refrigerant
- Two-Stage Copeland® UltraTech scroll compressor
- High-density foam compressor sound blanket
- ComfortNet™ Communications System compatible
- Expanded ComfortAlert™ diagnostics built in
- Set-up capable with 2 low-voltage wires to outdoor unit
- Diagnostic indicator lights and storage of 6 fault codes
- Color-coded terminal strip for non-communicating set-up
- High- and low-pressure switches
- Fully charged for 15' of tubing length
- Factory-installed filter dryer
- Coil and ambient temperature sensors
- Two-speed, super-quiet condenser fan motor
- Sweat connection service valves with easy access to gauge ports
- AHRI Certified; ETL Listed

Cabinet Features

- Wire fan discharge grille
- Steel louver coil guard
- Baked-on powder paint finish
- Rust-resistant coated screws
- Compact footprint
- Top and side maintenance access
- Single-panel access to controls with space provided for field-installed accessories
- When properly anchored, meets 2010 Florida Building Code unit integrity requirements for hurricane-type winds (Anchor bracket kits available.)



* Complete warranty details available from your local dealer or at www.goodmanmfg.com. To receive the Lifetime Compressor Limited Warranty (good for as long as you own your home), 10-Year Unit Replacement Limited Warranty and 10-Year Parts Limited Warranty, online registration must be completed within 60 days of installation. Online registration is not required in California or Québec.

PERFORMANCE DATA FOR SPLIT SYSTEM

OUTDOOR UNIT: _____

Cooling Performance

Total Capacity _____ MBH

Sensible Capacity _____ MBH

Outdoor Design TMP _____ °F DB / WB

Air Temp entering _____

Evaporator Coil _____ °F

Power Input Required _____ kW
(less blower motor)

INDOOR UNIT: _____

Heating Performance

Total Heating Capacity _____ kW
_____ BTU/h

Supply Air Blower Performance

Total Supply Air _____ CFM

Ext. Static Pressure _____ IWG

Blower Speed _____ RPM

Power Output Required _____ BHP

Motor Ratings _____ HP

Power Input Required _____ kW

Electrical Data

Power Supply _____

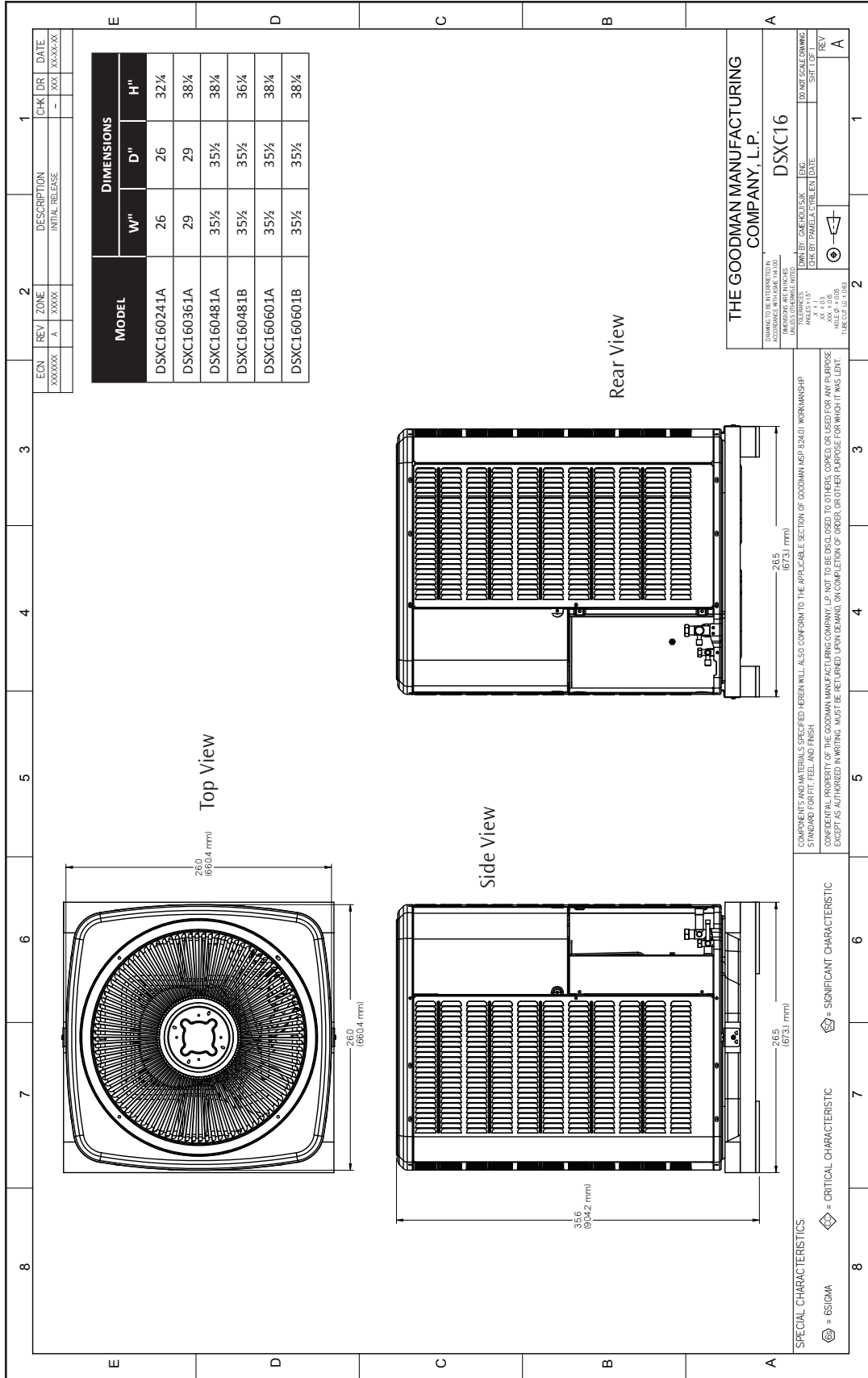
Total Unit Amps _____

Max Overcurrent Device:

Fuse _____ Breaker _____ Amps _____

NOTES

CERTIFIED DIMENSIONS



ACCESSORIES LISTS

MODEL	DESCRIPTION	DSXC16 024**	DSXC16 036**	DSXC16 048**	DSXC16 060**	√
ABK-20	Anchor Bracket Kit [^]	X	X	X	X	
ASC-01	Anti-Short Cycle Kit	X	X	X	X	
B1141643 ¹	24V Transformer	X	X	X	X	
CSR-U-1	Hard-start Kit	X	X	X		
CSR-U-2	Hard-start Kit		X			
CSR-U-3	Hard-start Kit				X	
FSK01A ²	Freeze Protection Kit	X	X	X	X	
LSK02A	Liquid Line Solenoid Valve	X	X	X	X	
OT18-60A ³	Outdoor Thermostat/Lockout Thermostat	X	X	X	X	
TX2N4	TXV Kit	X				
TX2N4A	TXV Kit	X				
TX3N4 ⁴	TXV Kit		X			
TX5N4	TXV Kit			X	X	

[^] Contains 20 brackets; four brackets needed to anchor unit to pad

¹ This component is included in the CTK01AA communicating thermostat kit.

² Installed on indoor coil

³ Available in 24V legacy mode only. This feature is integrated in the communicating mode.

Note: Maximum number of installed accessories at the same time is limited by the size of the unit's control box.