



Air Conditioning & Heating

SUBMITTAL DATA FORM

Job Name _____
Location _____
Purchaser _____
Order No. _____
Engineer _____
Unit No. _____
Model No. _____
Unit Designation _____
Performance Data Certified By: _____

CPG SERIES 7½- TO 12½-TON SELF-CONTAINED PACKAGED GAS/ELECTRIC WITH R-410A

Standard Features

- R-410A chlorine-free refrigerant
- TuffTube™ tubular heat exchanger
- High-efficiency scroll compressor
- Two-stage heating / two-stage cooling
- Copper tube / aluminum fin coils
- Contactor with lugs
- High-capacity, steel-cased filter dryer
- Single-point entry
- 24-volt terminal strip
- Convertible
- Easy to service
- Built-in filter rack with standard 2" filters
- Bottom utility entry
- Complies with California NOx emissions standards
- AHRI Certified; ETL Listed

Cabinet Features

- Heavy-gauge, galvanized-steel cabinet with UV-resistant powder-paint finish
- Full Perimeter Rail
- Curb Fit

Contents

Performance Data
Accessories List
Certified Dimensions
Individual Accessories Dimensions



* Complete warranty details available from your local dealer or at www.goodmanmfg.com.



PERFORMANCE DATA

Cooling Performance

Tota Capacity _____ MBH
 Sensible Capacity _____ MBH
 Outdoor Design TMP _____ °F DB / WB
 Air Temp entering _____
 Evaporator Coil _____ °F
 Power Input Required _____ kW
 (less blower motor)

Heating Performance

Total Heating Capacity _____ kW
 _____ BTU/h

Supply Air Blower Performance

Total Supply Air _____ CFM
 Ext. Static Pressure _____ IWG
 Blower Speed _____ RPM
 Power Output Required _____ BHP
 Motor Ratings _____ HP
 Power Input Required _____ kW

Electrical Data

Power Supply _____
 Total Unit Amps _____ Amps
Max Overcurrent Device:
 Fuse _____ Breaker _____ Amps _____

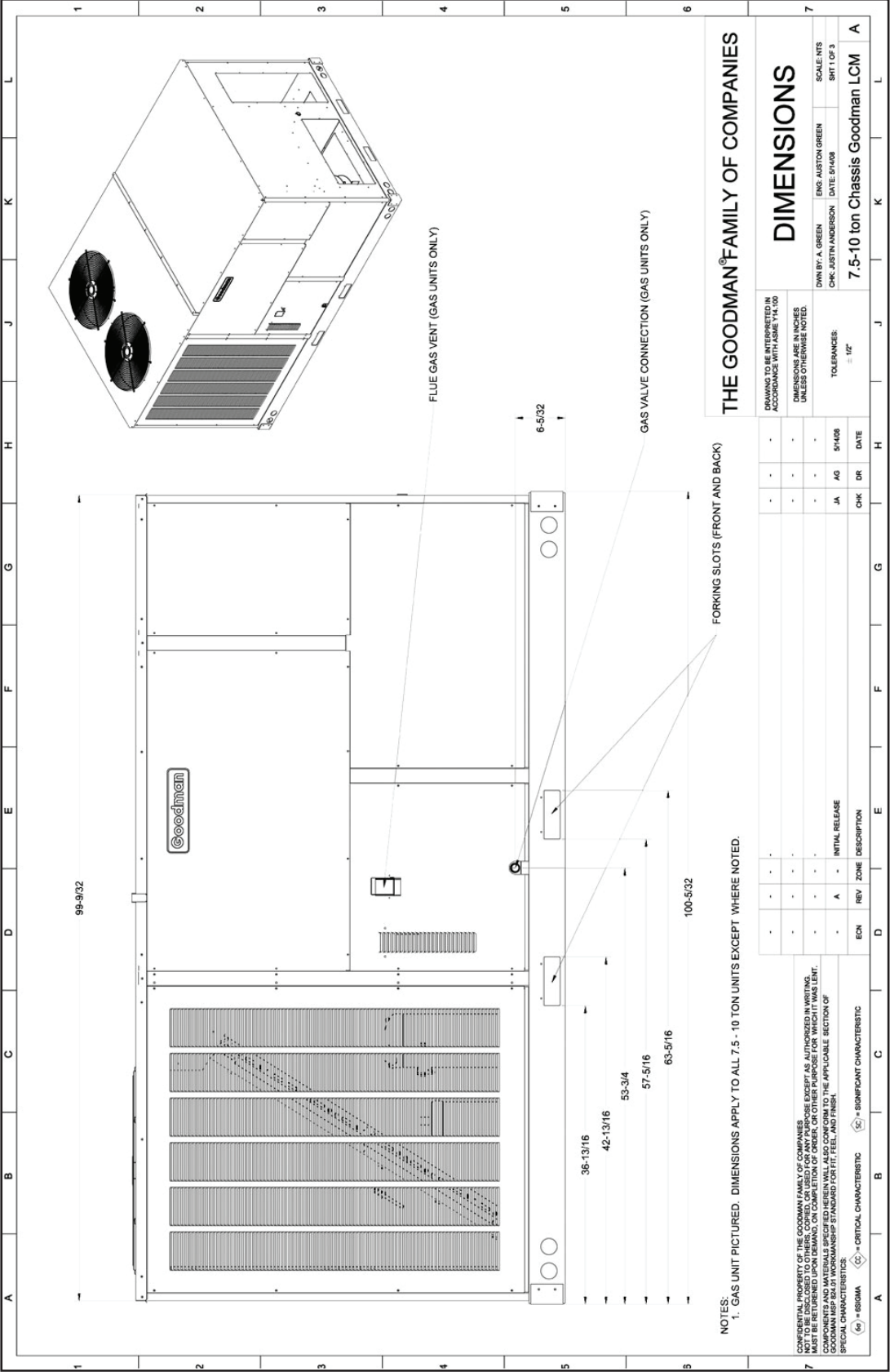
ACCESSORIES LIST (DIMENSIONS AND SPECIFICATIONS BEGIN ON PAGE 6.)

ITEM #	DESCRIPTION	FITS MODEL SIZES	PACKAGE DIMENSIONS (")	SHIP WEIGHT	✓
14CURB90150	Roof Curb 14" Tall	7½-12½ tons	16 x 6 x 94	160	
25FD90150	25% Manual Fresh Air Damper	7½-12½ tons	13 x 15½ x 37½	11	
25MFD90150	25% Motorized Fresh Air Damper	7½-12½ tons	13 x 15½ x 37½	12	
BRD90150	Horizontal Barometric Relief Damper	7½-12½ tons			
CDK120	Concentric Duct Kit	10 tons			
CDK150	Concentric Duct Kit	12½ tons			
CDK90102	Concentric Duct Kit	7½-8½ tons	31 x 48 x 18	55	
DNSQRRND90	Downflow Square-to-Round Adapter: 20" Round	7½ tons	15 x 37½ x 10	16	
DNECONGS90120	Downflow Economizer	7½-0 tons	40 x 20 x 41	135	
HailGD02	Condenser Coil Hail Guard	7½ - 10 tons	64 x 52 x 2		
HAKT36300	High-Altitude Kit	All Models			
HSKT090	High Static Kit	7½ tons			
HSKT120	High Static Kit	10 tons			
HZECONGS90150	Horizontal Economizer	7½-12½ tons	21 x 21 x 48	110	
LPKT36150	LP Conversion Kit	3 - 12½ tons			

JOB NAME

LOCATION

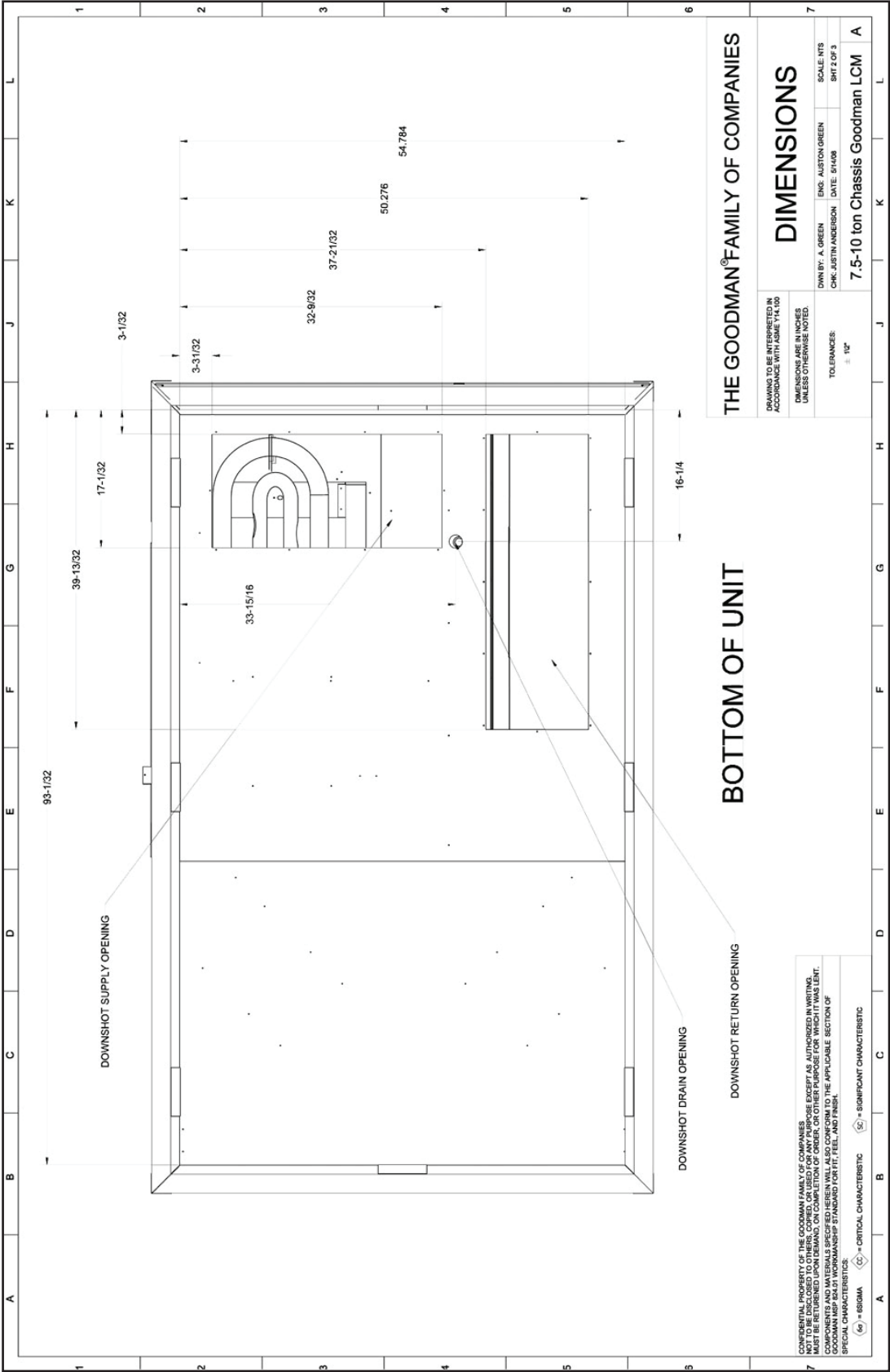
CERTIFIED DIMENSIONS — SIDE VIEW



JOB NAME

LOCATION

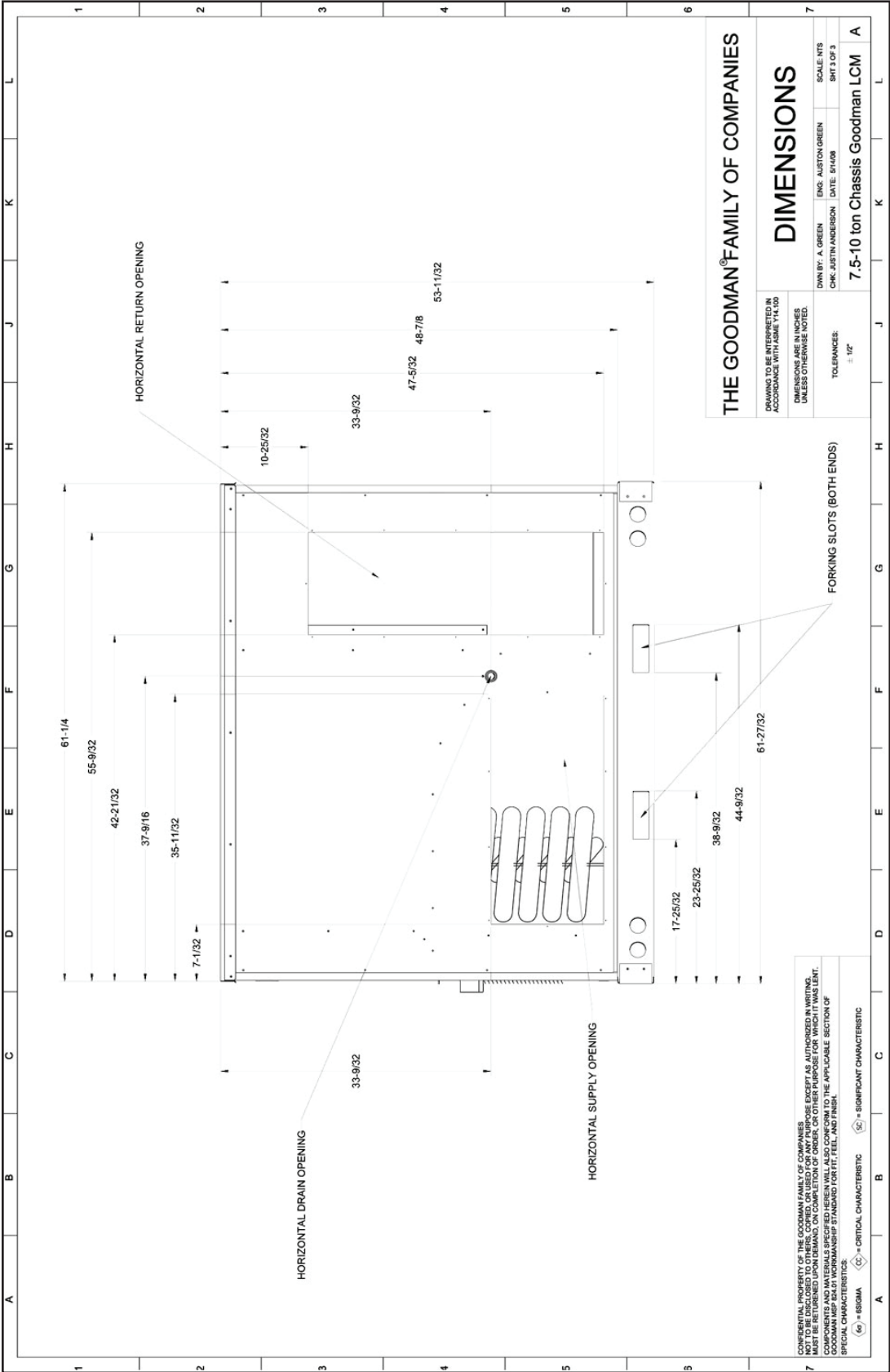
CERTIFIED DIMENSIONS — BOTTOM VIEW



JOB NAME

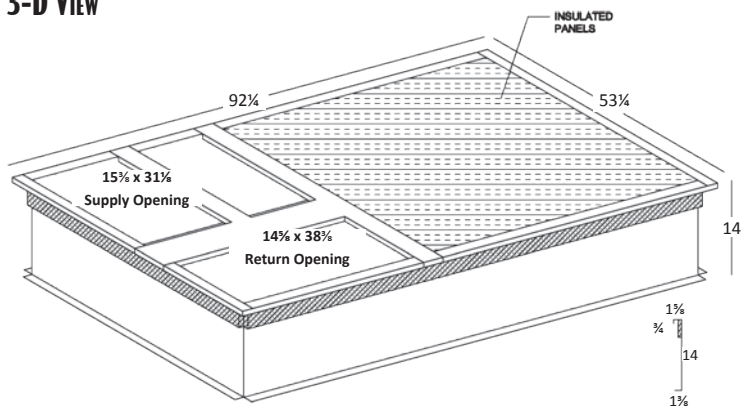
LOCATION

CERTIFIED DIMENSIONS — END VIEW

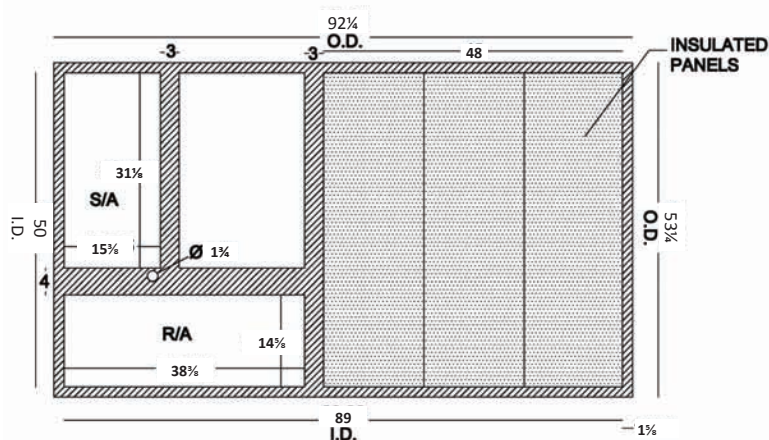


Roof CURB — #14CURB90150

3-D View



TOP VIEW



SPECIFICATIONS

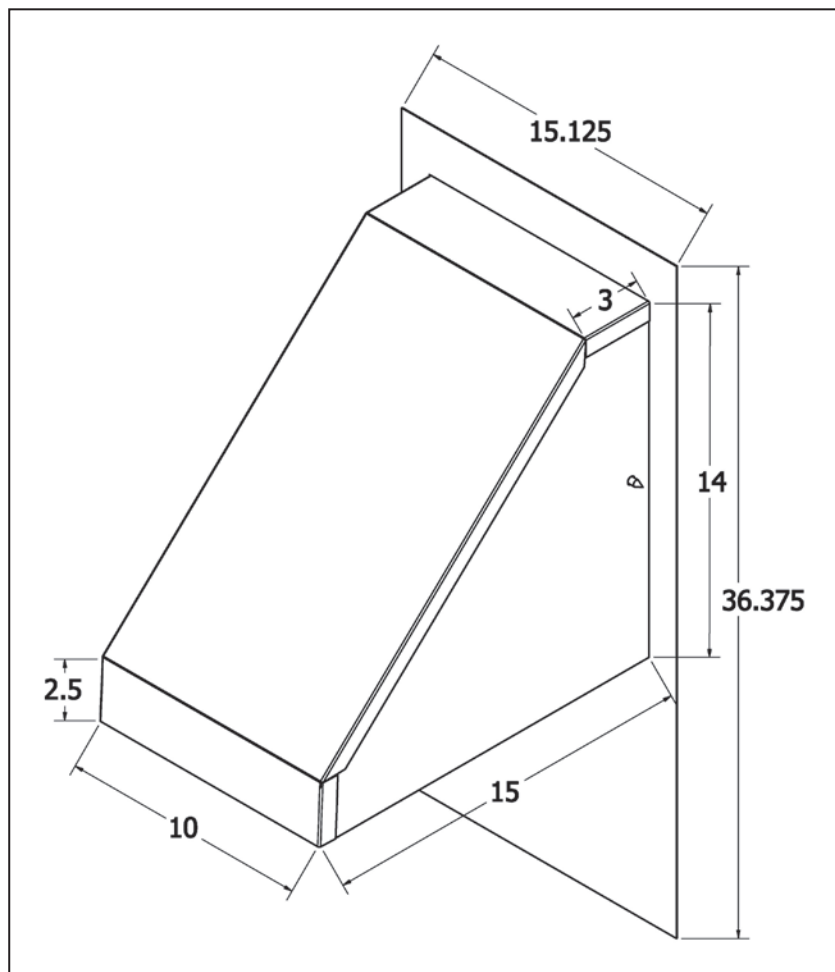
- 18-Gauge Construction
- 1 x 4 Wood Nailer attached to top of the curb
- Shipped knocked down with all hardware
- Gasket included
- Bed-Rail style corners

Note: outside duct dimension should be 1/2" less than opening dimensions above.

No CURB ADAPTER REQUIRED WHEN REPLACING CARRIER & BRYANT MODELS

No curb adapter is required when replacing an existing Carrier or Bryant RTU with a Goodman RTU in the following situations. The footprints and locations of the return and supply ductwork match.

NEW UNIT	EXISTING CARRIER	EXISTING BRYANT
7½ TO 12½ TONS CPC, CPG, CPH	48/50 TJ, LJ, DJ, QJ 48/50TM, HJ 008 - 014	580C-D, 558C-D, 548C-D 580F, 558F, 581B 090 - 150

MANUAL FRESH AIR DAMPER — #25FD90150**MOTORIZED FRESH AIR DAMPER — #25MFD90150****SPECIFICATIONS****Manual Damper**

- Provides up to 25% fresh air
- Locking selection knob provides constant opening
- Painted to match the unit
- Fits all 7½- to 12½-ton package units in all fuels

Motorized Damper

- 24 VAC Damper motor with spring return
- Fully assembled and factory wired
- Painted to match the unit
- Fits all 7½- to 12½-ton package units in all fuels

HAIL GUARD — #HAILGD02

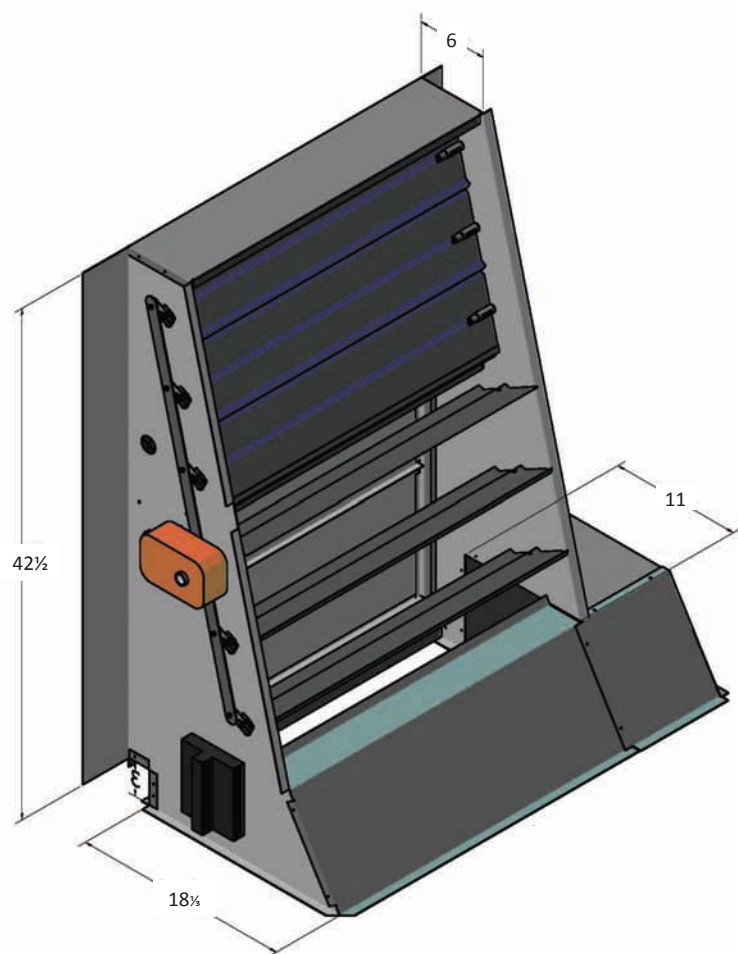


SPECIFICATIONS

- Condenser coil protection
- Prevents hail damage
- Easy to remove and clean
- Powder paint finish

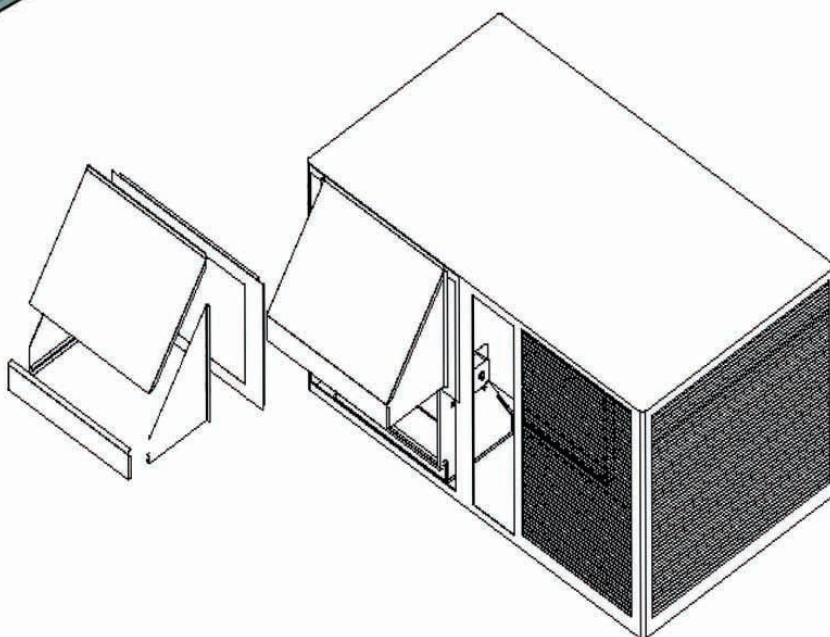
Note: Engineering drawings on following page.

DOWNFLOW ECONOMIZER — #DNECON**90150

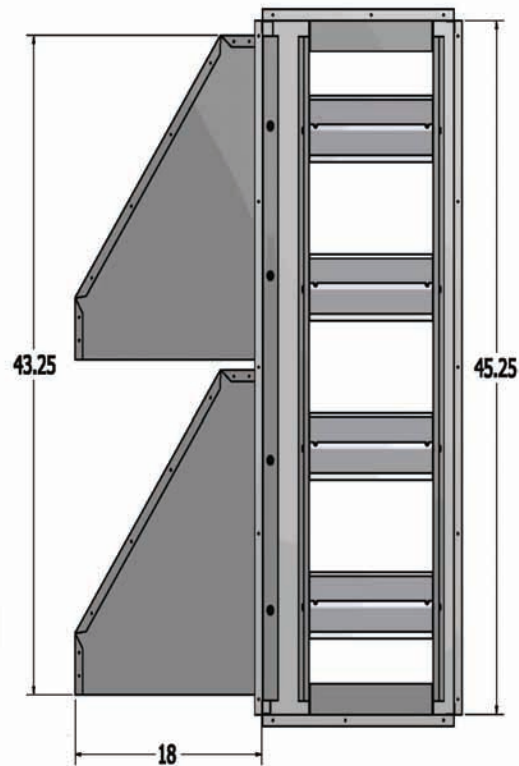
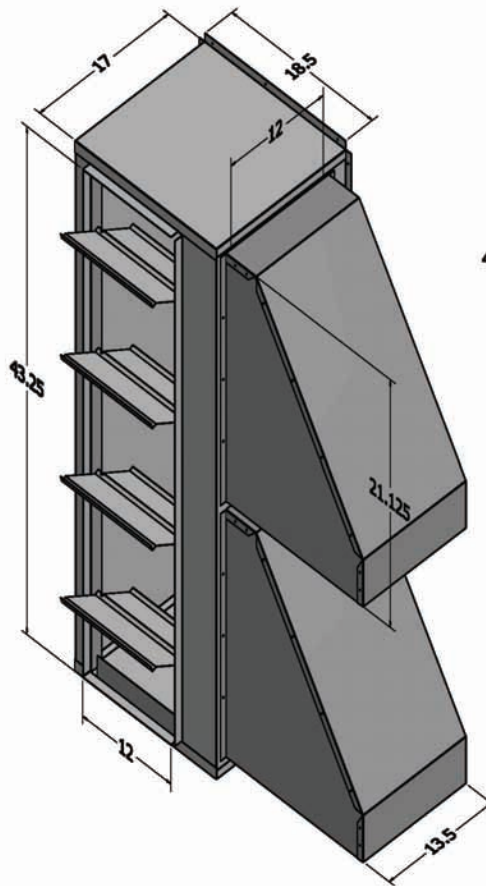


SPECIFICATIONS

- Fully modulating
- Up to 100% fresh air
- Integral barometric relief
- Hoods painted to match unit
- Honeywell economizer control
- Single adjustable enthalpy control convertible to dual enthalpy
- Adjustable minimum fresh air
- Factory wired
- Fits all 7 1/2- to 12 1/2-ton units

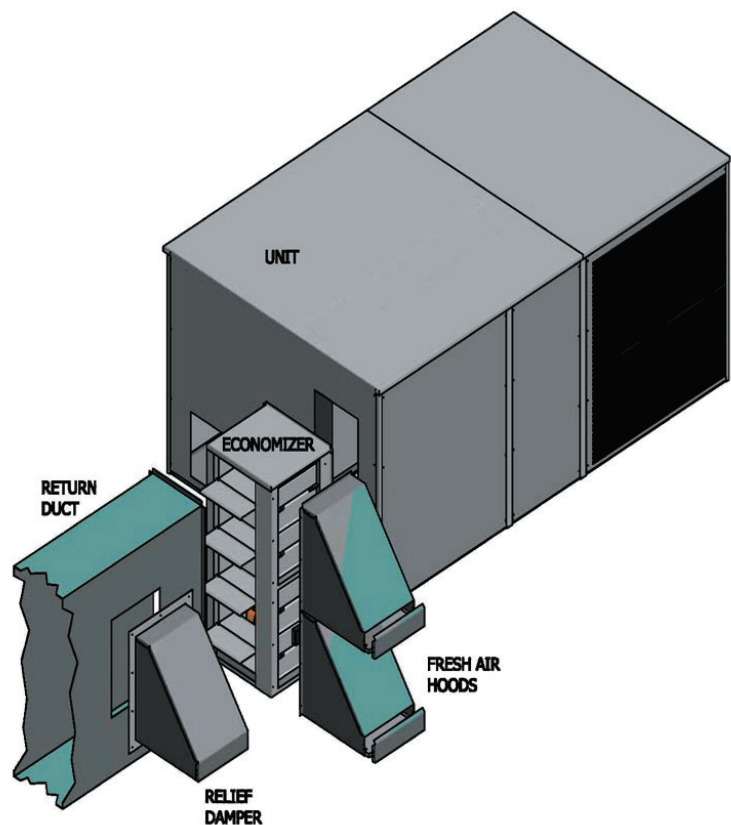


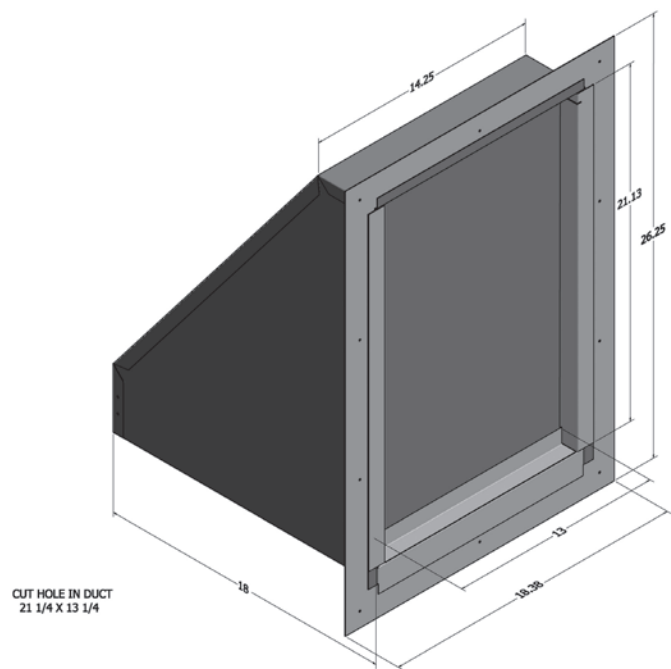
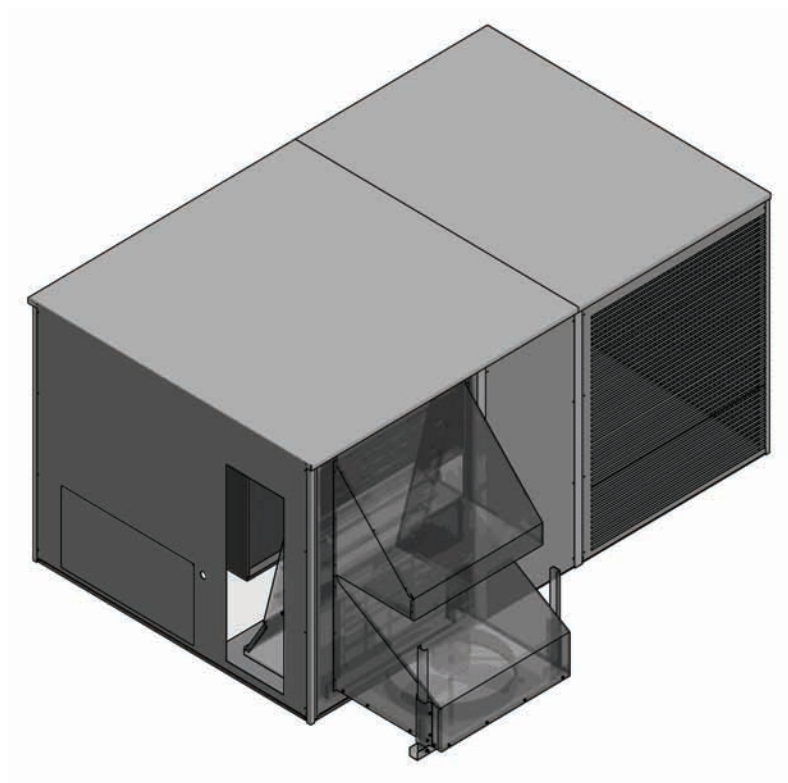
HORIZONTAL ECONOMIZER — #HZECON**90150



SPECIFICATIONS

- Fully modulating
- Up to 100% fresh air
- Honeywell economizer control
- Single adjustable enthalpy control convertible to dual enthalpy
- Adjustable minimum fresh air
- Factory wired
- Fits all 7½- to 12½-ton units

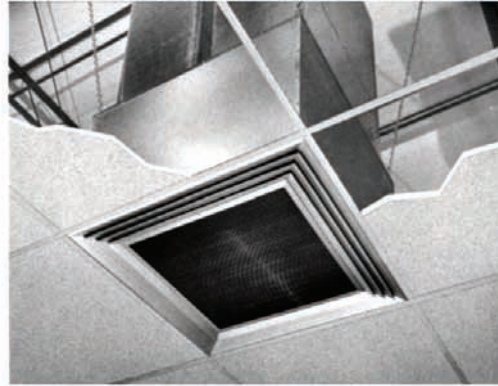


BAROMETRIC RELIEF DAMPER — #BRD90150**POWER EXHAUST FOR 208/230v UNITS — #PE901502****POWER EXHAUST FOR 460v UNITS — # PE901504**

CONCENTRIC DUCT KIT — #CDK90102 / #CDK120 / #CDK150



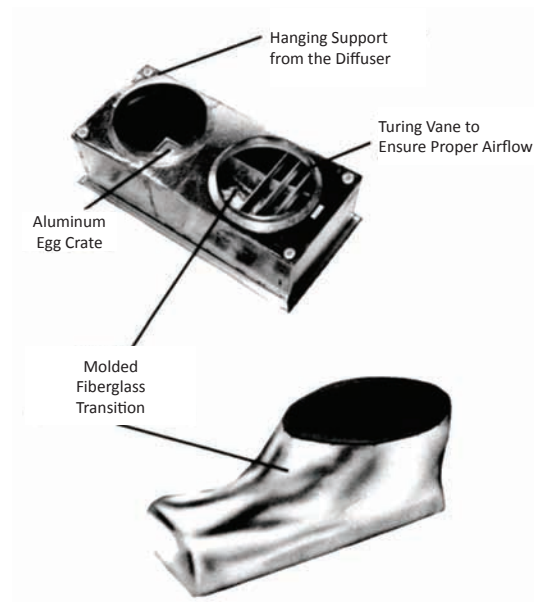
Light Commercial
T-Bar Ceiling



Commercial
T-Bar Ceiling

SPECIFICATIONS

- All-aluminum diffuser with aluminum return air egg crate
- Built-in anti-sweat gasket
- Molded fiberglass transition (through five tons)
- Built-in hanging supports
- Diffuser box constructed of fiberglass duct board (through 7½ tons) or sheet metal



7½-TON SQUARE-TO-ROUND — #DNSQRRND90

