

**MULTI-POSITION AIR HANDLER
WITH NEW SMARTFRAME™ CONSTRUCTION**

SUBMITTAL DATA FORM

Job Name _____
 Location _____
 Purchaser _____
 Order No. _____
 Engineer _____
 Unit No. _____
 Model No. _____
 Unit Designation _____
 Performance Data Certified By: _____

Standard Features

- Direct-drive, multi-speed ECM motor
- Internal factory-mounted TXV valve
- Transformer and blower time-delay on all units
- All-Aluminum coil
- Easy single-bulb UV light compatibility
- Cabinet air leakage less than 2.0% at 1.0 inch H₂O when tested in accordance with ASHRAE standard 193
- Cabinet air leakage less than 1.4% at 0.5 inch H₂O when tested in accordance with ASHRAE standard 193
- AHRI Certified; ETL Listed

Cabinet Features

- New rigid SmartFrame™ cabinet
- 21" depth for easy attic access
- DecaBDE-free thermoplastic drain pan
- Galvanized, leather grain-embossed finish
- Foil-faced insulation covers the internal blower case to reduce operating sound and cabinet condensation
- Glue-less cabinet insulation retention
- Screw-less sides & back reduces potential condensation
- Easily convertible multi-position capability: upflow, downflow or horizontal
- Coil-mounting track for quick repositioning
- Tool-less filter access
- Multiple independent electrical knockouts
- Heavy-gauge bottom plate



* Complete warranty details available from your local dealer or at www.goodmanmfg.com. To receive the 10-Year Parts Limited Warranty, online registration must be completed within 60 days of installation. Online registration not required in California or Quebec.

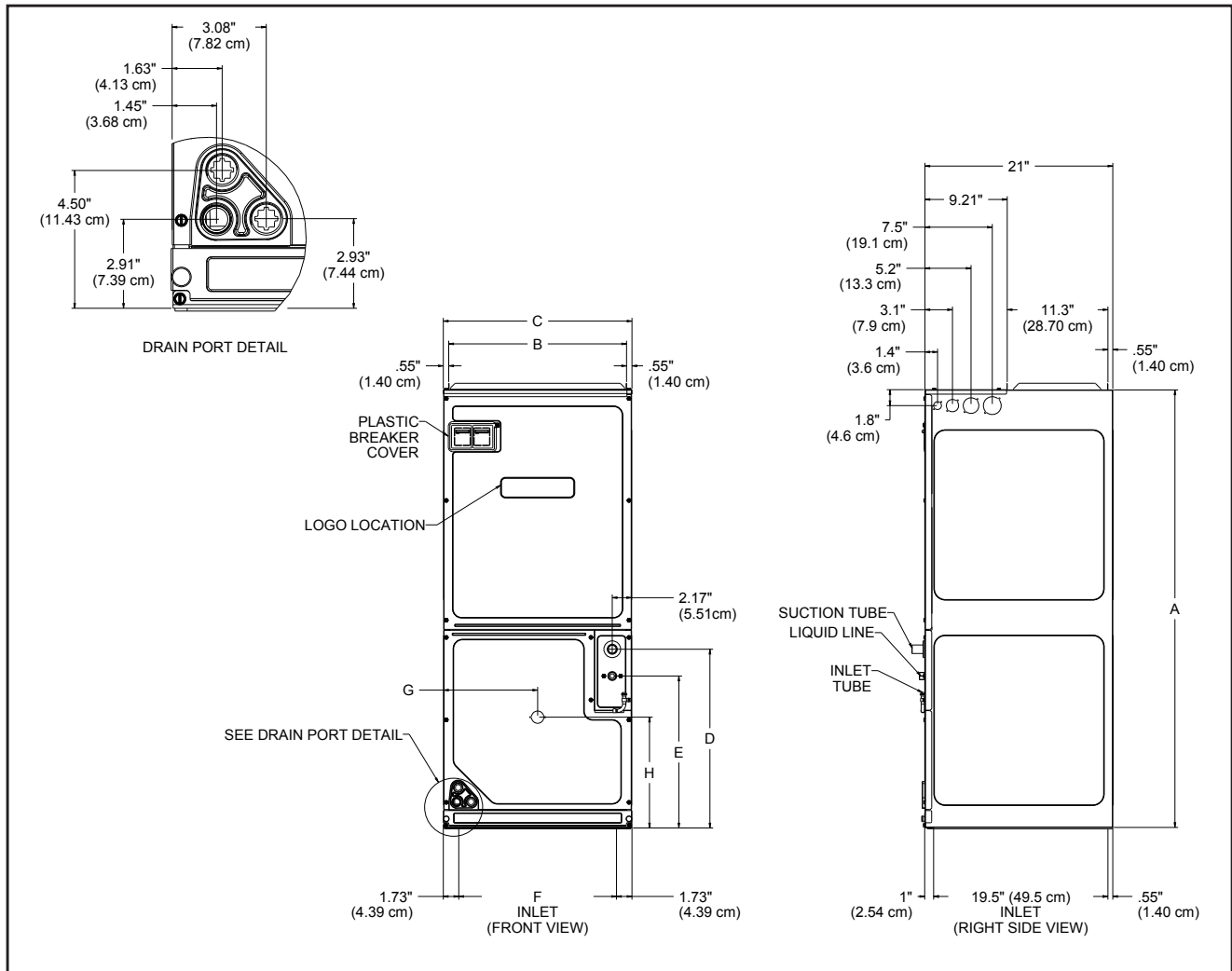
PERFORMANCE DATA FOR SPLIT SYSTEM

OUTDOOR UNIT: _____	
Cooling Performance	
Total Capacity	_____ MBH
Sensible Capacity	_____ MBH
Outdoor Design TMP	_____ °F DB / WB
Air Temp entering	
Evaporator Coil	_____ °F
Power Input Required (less blower motor)	_____ kW
Heating Performance	
Total Heating Capacity	_____ kW
	_____ BTU/h

INDOOR UNIT: _____	
Supply Air Blower Performance	
Total Supply Air	_____ CFM
Ext. Static Pressure	_____ IWG
Blower Speed	_____ RPM
Power Output Required	_____ BHP
Motor Ratings	_____ HP
Power Input Required	_____ kW
Electrical Data	
Power Supply	_____
Total Unit Amps	_____ Amps
Max Overcurrent Device:	
Fuse _____ Breaker _____	Amps _____

NOTES

DIMENSIONS



MODEL	A"	B"	C"	D"	E"	F"	G"	H"
ASPT24B14*	45	16 $\frac{3}{8}$	17 $\frac{1}{2}$	18	15	14 $\frac{1}{8}$	8 $\frac{3}{4}$	12
ASPT30C14*	49	20	21	20	17	17 $\frac{3}{8}$	10 $\frac{1}{2}$	12 $\frac{3}{8}$
ASPT36C14*	49	20	21	20	17	17 $\frac{3}{8}$	10 $\frac{1}{2}$	12 $\frac{3}{8}$
ASPT42D14*	58	23 $\frac{3}{8}$	24 $\frac{1}{2}$	28 $\frac{3}{4}$	25 $\frac{3}{4}$	21 $\frac{1}{8}$	12 $\frac{1}{4}$	12 $\frac{3}{8}$
ASPT48D14*	58	23 $\frac{3}{8}$	24 $\frac{1}{2}$	28 $\frac{3}{4}$	25 $\frac{3}{4}$	21 $\frac{1}{8}$	12 $\frac{1}{4}$	12 $\frac{3}{8}$
ASPT60D14*	58	23 $\frac{3}{8}$	24 $\frac{1}{2}$	28 $\frac{3}{4}$	25 $\frac{3}{4}$	21 $\frac{1}{8}$	12 $\frac{1}{4}$	12 $\frac{3}{8}$

ACCESSORIES

HEAT KIT SELECTION

TYPE / MODEL	ASPT 24B14-A*	ASPT 30C14-A*	ASPT 36C14-A*	ASPT 42D14-A*	ASPT 48D14-A*	ASPT 60D14-A*	v
HKSX03XC*	X	X	X	X	X	X	
HKSX05XC*	X	X	X	X	X	X	
HKSX06XC*	X	X	X	X	X	X	
HKSX08XC*	X	X	X	X	X	X	
HKSX10XC*	X	X	X	X	X	X	
HKSC05XC*	X	X	X	X	X	X	
HKSC08XC*	X	X	X	X	X	X	
HKSC10XC*	X	X	X	X	X	X	
HKSC15XA*	---	---	X	X	X	X	
HKSC15XB*	---	---	X	X	X	X	
HKSC19CA*	---	---	X	---	---	---	
HKSC19CB*	---	---	X	---	---	---	
HKSC20DA*	---	---	---	X	X	X	
HKSC20DB*	---	---	---	---	X	X	

- * Revision level that may or may not be designated.
Refer to the minimum airflow requirements for each of the heat kits.
- ¹ Air handler must either be on medium or high speed
- ² Air handler must be on high speed
- ³ For static pressure of 0.6" or higher, air handler must be on medium or high speed
- C Circuit breaker option
- ^ Heat kit requires three-phase power supply

DOWNFLOW INSULATION KIT

DFK-B	DFK-C	DFK-D
ASPT24B14**	ASPT30C14**	ASPT42D14**
	ASPT36C14**	ASPT48D14**
		ASPT60D14**

FILTERS

CHASSIS	PART #	SIZE	v
B	ALFH16201E	16.0" x 20.0"	
C	ALFH1912201E	19.5" x 20.0"	
D	ALFH20231E	23.0" x 20.0"	