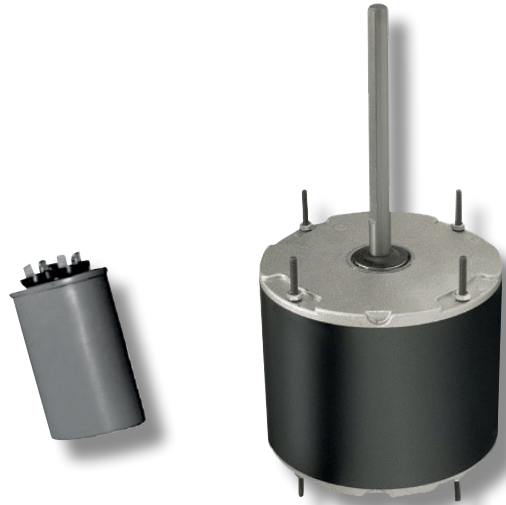


# INDUCTION MOTORS

# ECM MADE EASY™

## Shaded Pole or PSC Motors



## Replace with Evergreen® OM Motors

- Match HP, VAC and RPM ratings
- FLA (amperage) rating does not need to match
- Stock #6301 and #6303 - vertical shaft down only
- Remote mount control stock #6303R
  - » All angle mount
  - » Lower profile
  - » OEM mounting holes on side of motor shell

## Evergreen® OM

STOCK	HP	VOLTS	RPM
6301	1/5 - 1/10	208-230	850/1100
6303	1/3 - 1/10	208-230	850/1100
6303R	1/3 - 1/10	208-230	850/1100

