



Submittal Data Sheet

4.0-Ton DC Ducted Cooling Only

FBQ48PVJURZR48TAVJU

FEATURES

- External static pressure (ESP) capabilities up to 0.8" W.G.
- Three user selected fan speeds available plus fan "Auto" logic
- Low ambient cooling operation down to 0°F (with optional wind baffle(s))
- Built-in condensate pump
- Maximum piping length up to 230 ft. allows flexible placement of indoor unit
- Maximum piping height separation up to 98 ft.
- 10 year limited parts and compressor warranty

BENEFITS

- DC fan motor provides improved efficiency
- Bottom access for easy service

INDOOR UNIT



OUTDOOR UNIT





Submittal Data Sheet

4.0-Ton DC Ducted Cooling Only
FBQ48PVJURZR48TAVJU

SYSTEM PERFORMANCE

| | | | |
|------------------------------------|------------|-------------------------------|---|
| Indoor Unit Model No. | FBQ48PVJU | Indoor Unit Name: | Sky-Air DC Ducted |
| Outdoor Unit Model No. | RZR48TAVJU | Outdoor Unit Name: | Sky-Air 4.0 Ton Cooling Only ODU |
| Rated Cooling Capacity (Btu/hr): | 4,800 | Rated Cooling Conditions: | Indoor (°F DB/WB): 80 / 67 Ambient (°F DB/WB): 95 / 75 |
| Sensible Capacity (Btu/hr): | 36,100 | Rated Piping Length(ft): | 25 |
| Max/Min Cooling Capacity (Btu/hr): | / | Rated Height Difference (ft): | 0.00 |
| Cooling Input Power (kW): | | | |
| SEER (Non-Ducted/Ducted): | / 14.00 | | |
| EFER (Non-Ducted/Ducted): | / 8.60 | | |

SYSTEM DETAILS

| | | | |
|--|--------|-----------------------------------|----------|
| Refrigerant Type: | R-410A | Cooling Operation Range (°F DB): | 23 - 122 |
| Holding Refrigerant Charge (lbs): | 7.9 | Heating Operation Range (°F WB): | - |
| Additional Charge (lb/ft): | 0.04 | Max. Pipe Length (Vertical) (ft): | 98 |
| Pre-charge Piping (Length) (ft): | 15 | Cooling Range w/Baffle (°F DB): | 0 - 122 |
| Max. Pipe Length (Total) (ft): | 230 | Heating Range w/Baffle (°F WB): | - |
| Max Height Separation (Ind to Ind ft): | 0 | | |

Daikin City Generated Submittal Data

Daikin North America LLC, 5151 San Felipe, Suite 500, Houston, TX, 77056

www.daikinac.com www.daikincomfort.com

(Daikin's products are subject to continuous improvements. Daikin reserves the right to modify product design, specifications and information in this data sheet without notice and without incurring any obligations)

Submittal Date: 6/3/2019 9:04:16 AM

Page 2 of 4



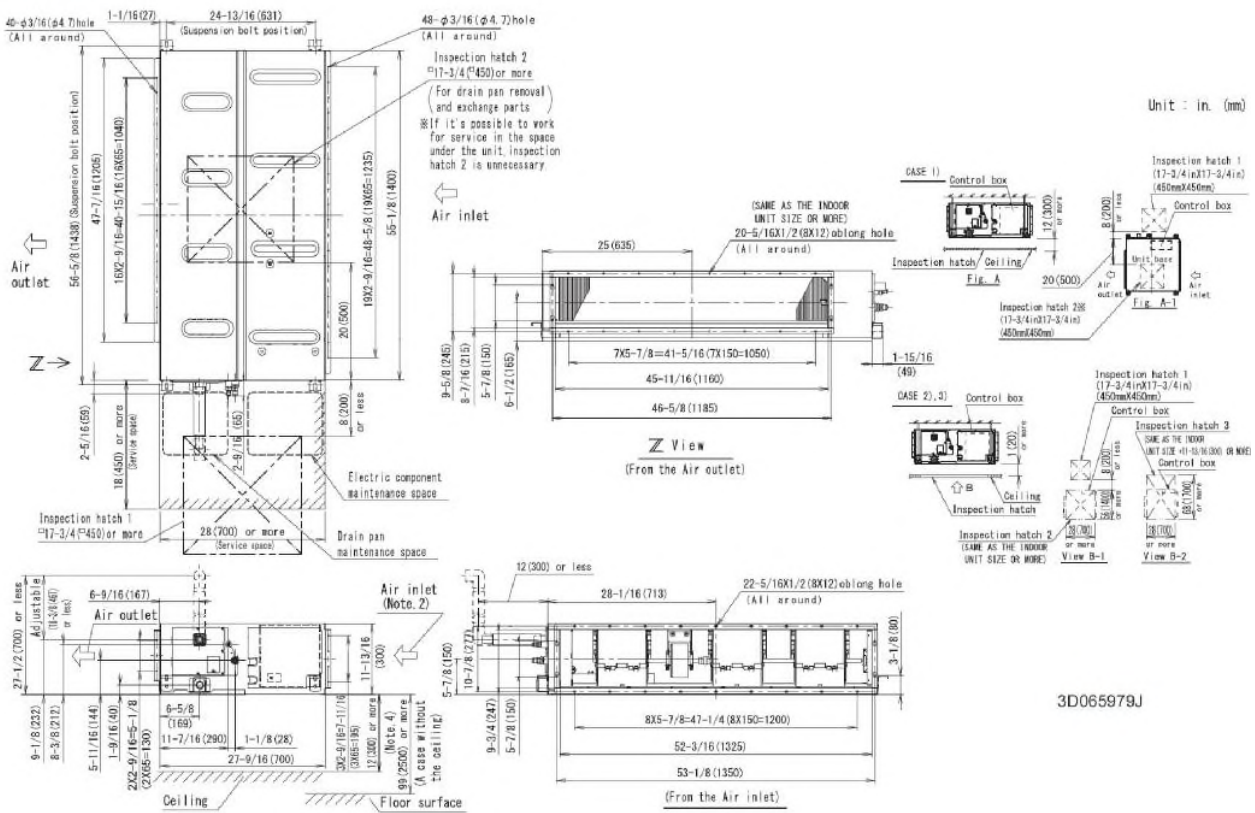
Submittal Data Sheet

4.0-Ton DC Ducted Cooling Only
FBQ48PVJURZR48TAVJU

INDOOR UNIT DETAILS

| | | | |
|--|-----------------------------|--------------------------------|----------------|
| Power Supply (V/Hz/Ph): | 208-230 / 60 / 1 | Airflow Rate (H/M/L) (CFM): | 1400/1,165/988 |
| Power Supply Connections: | L1, L2, Ground | Moisture Removal (Gal/hr): | |
| Min. Circuit Amps MCA (A): | 3.4 | Gas Pipe Connection (inch): | 5/8 |
| Max Overcurrent Protection (MOP) (A): | 15 | Liquid Pipe Connection (inch): | 3/8 |
| Dimensions (HxWxD) (in): | 11-13/16 x 55-1/8 x 27-9/16 | Condensate Connection (inch): | 1 |
| Net Weight (lb): | 102 | Sound Pressure (H/M/L) (dBA): | 44/42/40 |
| Ext. Static Pressure (Rated/Max) (inWg): | 0.4 / 0.8 | Sound Power Level (dBA): | |

FBQ36-48PVJU



3D065979J

Daikin North America LLC, 5151 San Felipe, Suite 500, Houston, TX, 77056

Daikin City Generated Submittal Data

www.daikinac.com www.daikincomfort.com

(Daikin's products are subject to continuous improvements. Daikin reserves the right to modify product design, specifications and information in this data sheet without notice and without incurring any obligations)

Submittal Date: 6/3/2019 9:04:16 AM

Page 3 of 4



Submittal Data Sheet

4.0-Ton DC Ducted Cooling Only
FBQ48PVJURZR48TAVJU

OUTDOOR UNIT DETAILS

| | | | |
|---------------------------------------|-----------------------------|--------------------------------|----------|
| Power Supply (V/Hz/Ph): | 208-230 / 60 / 1 | Compressor Stage: | |
| Power Supply Connections: | L1, L2, Ground | Capacity Control Range (%): | 14 - 100 |
| Min. Circuit Amps MCA (A): | 29.1 | Airflow Rate (H) (CFM): | 3741 |
| Max Overcurrent Protection (MOP) (A): | 35 | Gas Pipe Connection (inch): | 5/8 |
| Max Starting Current MSC(A): | | Liquid Pipe Connection (inch): | 3/8 |
| Rated Load Amps RLA(A): | 19 | Sound Pressure (H) (dBA): | 57 |
| Dimensions (HxWxD) (in): | 52-15/16 x 35-7/16 x 12-5/8 | Sound Power Level (dBA): | |
| Net Weight (lb): | 225 | | |

