



Submittal Data Sheet

2.5-Ton Multi-Position Air Handler Cooling Only

FTQ30TAVJUDRZR30TAVJUA

FEATURES

- Designed for zero clearance on three sides and only 24" clearance on the front for service
- Horizontal left, Horizontal right, Upflow & Downflow installation configurations

INDOOR UNIT



OUTDOOR UNIT





Submittal Data Sheet

2.5-Ton Multi-Position Air Handler Cooling Only
 FTQ30TAVJUDRZR30TAVJUA

SYSTEM PERFORMANCE

| | | | |
|------------------------------------|-------------|-------------------------------|---|
| Indoor Unit Model No. | FTQ30TAVJUD | Indoor Unit Name: | air handler |
| Outdoor Unit Model No. | RZR30TAVJUA | Outdoor Unit Name: | Sky-Air 2.5 Ton Cooling Only ODU |
| Rated Cooling Capacity (Btu/hr): | 30,000 | Rated Cooling Conditions: | Indoor (°F DB/WB): 80 / 67 Ambient (°F DB/WB): 95 / 75 |
| Sensible Capacity (Btu/hr): | 22,300 | Rated Piping Length(ft): | 25 |
| Max/Min Cooling Capacity (Btu/hr): | / | Rated Height Difference (ft): | 0.00 |
| Cooling Input Power (kW): | | | |
| SEER (Non-Ducted/Ducted): | / 16.00 | | |
| EER (Non-Ducted/Ducted): | / 12.50 | | |
| Heating Input Power (kW): 0.41 | | | |

SYSTEM DETAILS

| | | | |
|--|--------|-----------------------------------|----------|
| Refrigerant Type: | R-410A | Cooling Operation Range (°F DB): | 23 - 122 |
| Holding Refrigerant Charge (lbs): | 7.9 | Heating Operation Range (°F WB): | - |
| Additional Charge (lb/ft): | 0.04 | Max. Pipe Length (Vertical) (ft): | 98 |
| Pre-charge Piping (Length) (ft): | 15 | Cooling Range w/Baffle (°F DB): | 0 - 122 |
| Max. Pipe Length (Total) (ft): | 230 | Heating Range w/Baffle (°F WB): | - |
| Max Height Separation (Ind to Ind ft): | 0 | | |

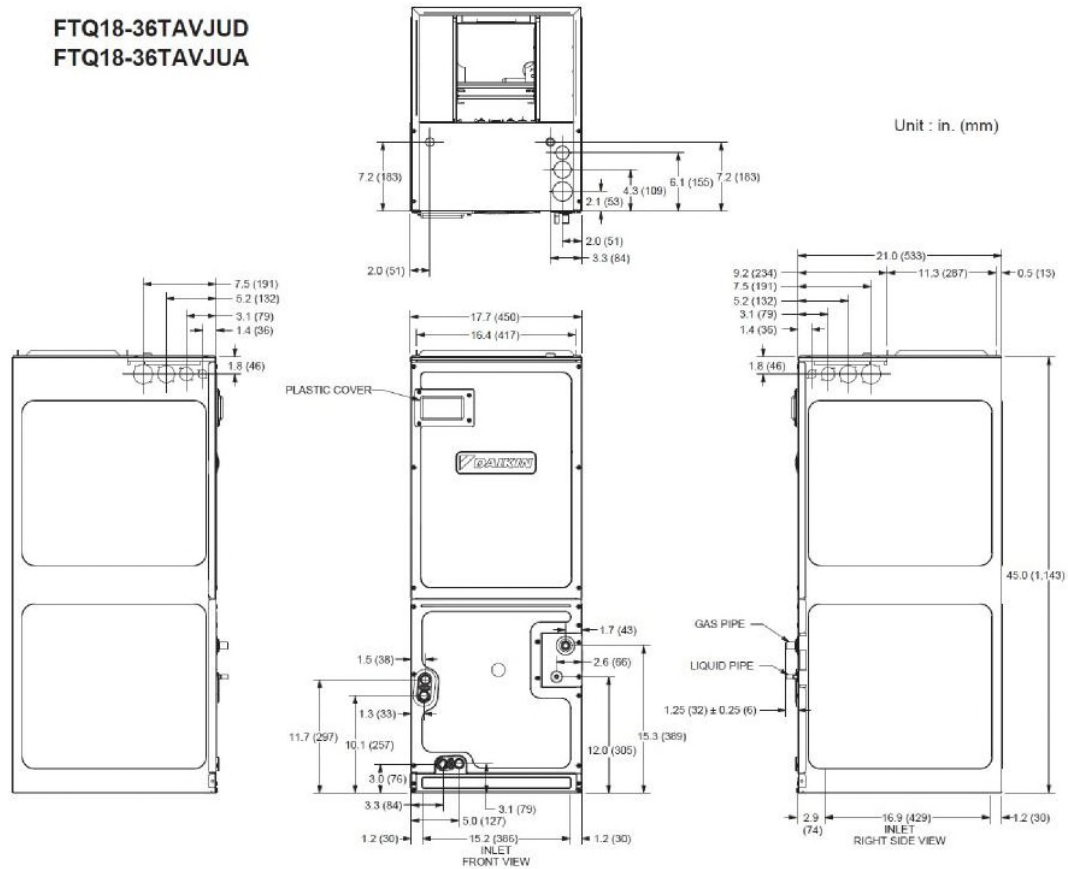
Submittal Data Sheet

2.5-Ton Multi-Position Air Handler Cooling Only
 FTQ30TAVJUDRZR30TAVJUA

INDOOR UNIT DETAILS

| | | | |
|--|------------------|--------------------------------|--------------|
| Power Supply (V/Hz/Ph): | 208/230 / 60 / 1 | Airflow Rate (H) (CFM): | 1000 |
| Power Supply Connections: | L1, L2, Ground | Moisture Removal (Gal/hr): | |
| Min. Circuit Amps MCA (A): | 4.9 | Gas Pipe Connection (inch): | 5/8 |
| Max Overcurrent Protection (MOP) (A): | 15 | Liquid Pipe Connection (inch): | 3/8 |
| Dimensions (HxWxD) (in): | 45 x 17.5 x 21 | Condensate Connection (inch): | 3/4 |
| Net Weight (lb): | 115 | Sound Pressure (H/M/L) (dBA): | 52 / 48 / 44 |
| Ext. Static Pressure (Rated/Max) (inWg): | / 0.9 | Sound Power Level (dBA): | |

DIMENSIONAL DRAWING - INDOOR UNIT





Submittal Data Sheet

2.5-Ton Multi-Position Air Handler Cooling Only
FTQ30TAVJUDRZR30TAVJUA

OUTDOOR UNIT DETAILS

| | | | |
|---------------------------------------|-----------------------------|--------------------------------|----------|
| Power Supply (V/Hz/Ph): | 208-230 / 60 / 1 | Compressor Stage: | |
| Power Supply Connections: | L1, L2, Ground | Capacity Control Range (%): | 14 - 100 |
| Min. Circuit Amps MCA (A): | 29.1 | Airflow Rate (H) (CFM): | 3741 |
| Max Overcurrent Protection (MOP) (A): | 35 | Gas Pipe Connection (inch): | 5/8 |
| Max Starting Current MSC(A): | | Liquid Pipe Connection (inch): | 3/8 |
| Rated Load Amps RLA(A): | 19 | Sound Pressure (H) (dBA): | 57 |
| Dimensions (HxWxD) (in): | 52-15/16 x 35-7/16 x 12-5/8 | Sound Power Level (dBA): | |
| Net Weight (lb): | 225 | | |

