



Submittal Data Sheet

3.0-Ton Roundflow Cassette Unit

FCQ36PAVJURZQ36PVJU8

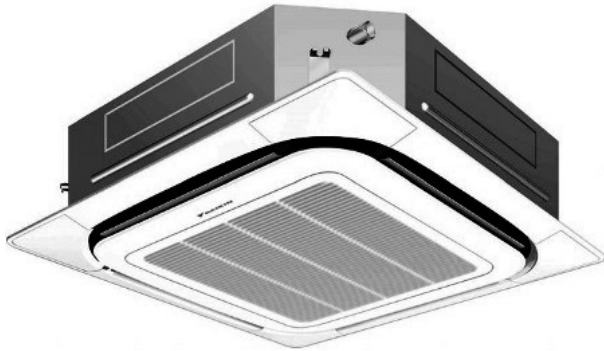
FEATURES

- 23 configurable airflow patterns ensure ideal air distribution for maximum comfort
- 360° airflow reduces draft
- Lower air velocities provide better airflow distribution
- Condensate pump provided standard
- Outside air integration possible
- 10 year limited parts and compressor warranty

BENEFITS

- Optional wired controller
- Maximum piping length up to 230 ft. allows flexible placement of indoor unit
- Maximum piping height separation up to 164 ft.
- Low ambient cooling operation down to 0°F (with optional wind baffle(s))

INDOOR UNIT



OUTDOOR UNIT





Submittal Data Sheet
3.0-Ton Roundflow Cassette Unit
FCQ36PAVJURZQ36PVJU8

SYSTEM PERFORMANCE			
Indoor Unit Model No.	FCQ36PAVJU	Indoor Unit Name:	Sky-Air Round Flow Cassette - P Series
Outdoor Unit Model No.	RZQ36PVJU8	Outdoor Unit Name:	Sky-Air Heat Pump ODU
Rated Cooling Capacity (Btu/hr):	36,000	Rated Cooling Conditions:	Indoor (°F DB/WB): 80 / 37 Ambient (°F DB/WB): 95 / 75
Sensible Capacity (Btu/hr):	28,600	Rated Piping Length(ft):	25
Max/Min Cooling Capacity (Btu/hr):	/	Rated Height Difference (ft):	0.00
Cooling Input Power (kW):	3.160	Rated Heating Conditions:	Indoor (°F DB/WB): 70 / 60 Ambient (°F DB/WB): 47 / 43
SEER (Non-Ducted/Ducted):	17.60 /	HSPF (Non-Ducted/Ducted):	9.0 /
EER (Non-Ducted/Ducted):	11.40 /		
Rated Heating Capacity (Btu/hr):	40,000		
Heating Input Power (kW):	3.26		
SYSTEM DETAILS			
Refrigerant Type:	R-410A	Cooling Operation Range (°F DB):	23 - 115
Holding Refrigerant Charge (lbs):	8.80	Heating Operation Range (°F WB):	-4 - 60
Additional Charge (lb/ft):	0.04	Max. Pipe Length (Vertical) (ft):	164
Pre-charge Piping (Length) (ft):	0	Cooling Range w/Baffle (°F DB):	0 - 115
Max. Pipe Length (Total) (ft):	230	Heating Range w/Baffle (°F WB):	-
Max Height Separation (Ind to Ind ft):	0		

Submittal Data Sheet

3.0-Ton Roundflow Cassette Unit

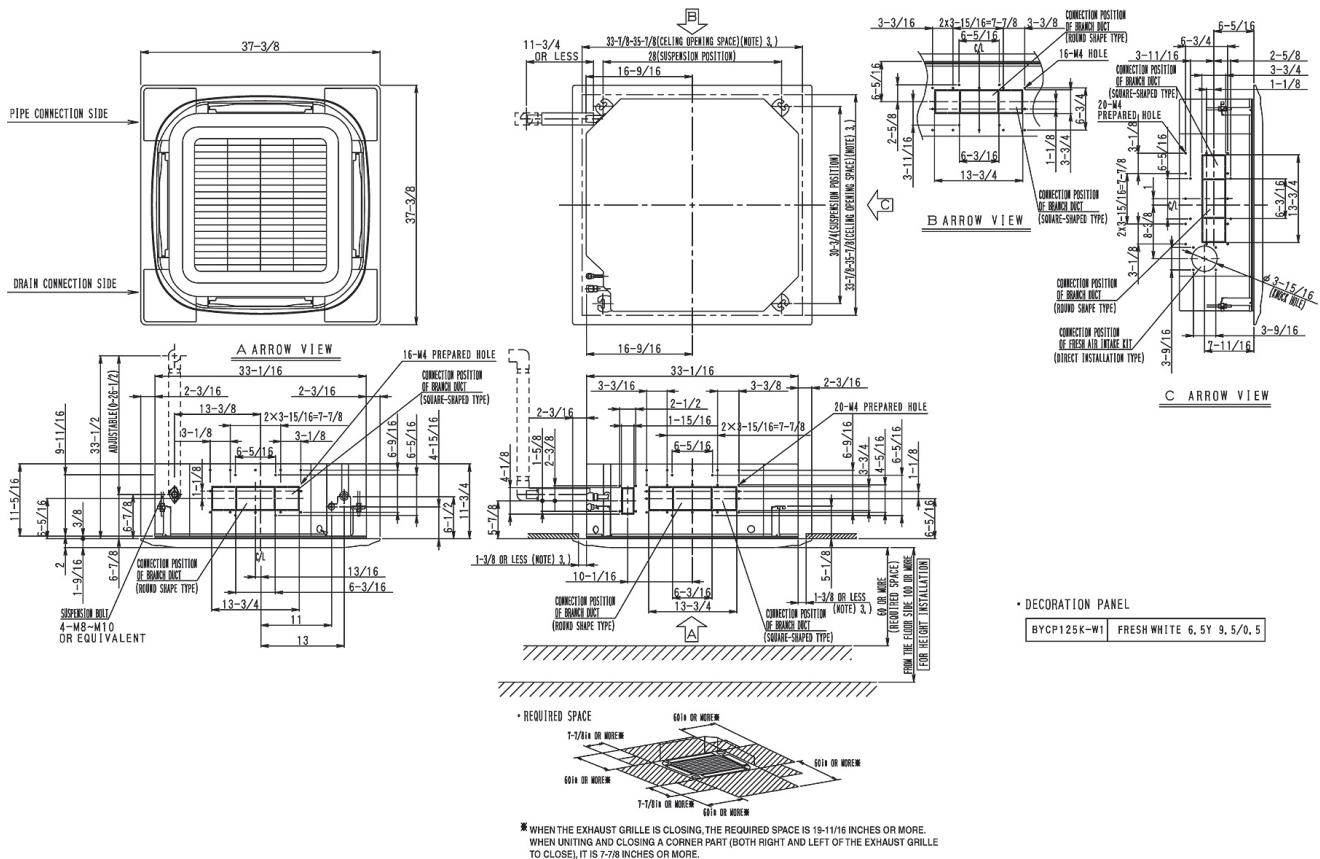
FCQ36PAVJURZQ36PVJU8

INDOOR UNIT DETAILS

Power Supply (V/Hz/Ph):	208/230 / 60 / 1	Airflow Rate (H/M/L) (CFM):	1180/910/700
Power Supply Connections:	L1, L2, Ground	Moisture Removal (Gal/hr):	
Min. Circuit Amps MCA (A):	1.4	Gas Pipe Connection (inch):	5/8
Max Overcurrent Protection (MOP) (A):	15	Liquid Pipe Connection (inch):	3/8
Dimensions (HxWxD) (in):	11-5/16 x 33-1/16 x 33-1/16	Condensate Connection (inch):	1
Net Weight (lb):	55	Sound Pressure (H/M) (dBA):	44/38
Ext. Static Pressure (Rated/Max) (inWg):	0 / 0	Sound Power Level (dBA):	

DIMENSIONAL DRAWING - INDOOR UNIT

FCQ36_42PAVJU
Unit (in.)



Submittal Data Sheet

3.0-Ton Roundflow Cassette Unit

FCQ36PAVJURZQ36PVJU8

OUTDOOR UNIT DETAILS

Power Supply (V/Hz/Ph):	208/230 / 60 / 1	Compressor Stage:	
Power Supply Connections:	L1, L2, Ground	Capacity Control Range (%):	-
Min. Circuit Amps MCA (A):	27	Airflow Rate (H) (CFM):	3740
Max Overcurrent Protection (MOP) (A):	30	Gas Pipe Connection (inch):	5/8
Max Starting Current MSC(A):		Liquid Pipe Connection (inch):	3/8
Rated Load Amps RLA(A):		Sound Pressure (H) (dBA):	58
Dimensions (HxWxD) (in):	52-15/16 x 35-7/16 x 12-5/8	Sound Power Level (dBA):	
Net Weight (lb):	283		

DIMENSIONAL DRAWING - OUTDOOR UNIT

