

Project Name: _____
 Location: _____
 Engineer: _____
 Submitted to: _____
 Submitted by: _____
 Reference: _____

Approval: _____
 Date: _____
 Construction: _____
 Unit #: _____
 Drawing #: _____

Performance

Indoor Unit Model No: FTXS18HVJU
Outdoor Unit Model No: RXS18DVJU
Cooling Capacity (Btu/hr): 18000
Sensible Capacity (Btu/hr): 11500
Cooling Input Power (kW): 1.63
Cooling EER (Btu/hr / kW): 11.3
SEER: 16.3
Heating Capacity (Btu/hr): 21600
Heating Input Power (kW): 2.04
Heating COP (Btu/hr / Btu/hr): 3.17
HSPF: 9.1

Indoor Unit Type: Wall Mounted
Condensing Unit Type: High SEER Heat Pump
Cooling Nominal Conditions: Indoor: 80°F DB/67°F WB
 Outdoor: 95°F DB/75°F WB
 Water Cooled:
Heating Nominal Conditions: Indoor: 47°F DB/43°F WB
 Outdoor: 47°F DB/43°F WB
 Water Cooled:
Nominal Piping Length: 25
Nominal Height Separation: 0
Nominal Water Flow Rate: _____

Indoor Unit Details

Power Supply (V/Hz/Ph): 208-230/60/1ph
Power Supply Connections: L1, L2, Ground
Min. Circuit Amps MCA (A): N/A
Max. Fusible Amps MFA (A): N/A
Dimensions (HxWxD): 11-7/16x41-5/16x9-3/8
Panel (HxWxD): N/A
Net Weight (lbs): 26.5
Weight with Panel (lbs): _____

Airflow Rate (CFM wet coil): 549/476/402
Moisture Removal (pt/h): 4.3
Gas Pipe Connection (inch): 1/2
Liquid Pipe Connection (inch): 1/4
Condensate Connection (inch): 11/16
Sound Pressure Level (dBA): 45
Sound Power Level (dBA): _____
Nominal External Static Pressure (inH2O): 0
Max Ext Static Pressure (inH2O): 0

Condensing Unit Details

Power Supply (V/Hz/Ph): 208-230/60/1ph
Power Supply Connections: L1, L2, Ground
Min. Circuit Amps MCA (A): 14.1
Max. Fusible Amps MFA (A): 20
Max. Starting Current MSC(A): _____
Rated Load Amps RLA (A): 11
Total Overcurrent Amps (A): _____
Dimensions (HxWxD): 28-15/16x32-1/2x11-13/16
Net Weight (lbs): 117
Compressor Type: Inverter
Capacity Control Range (%): _____
Capacity Index Limit: _____

Airflow Rate (CFM): 1603
Gas Pipe Connection (inch): 1/2
Liquid Pipe Connection (inch): 1/4
H/L Pressure Connection (inch): _____
H/L Equalizing Connection (inch): _____
Water Inlet Connection (inch FPT): _____
Water Outlet Connection (inch FPT): _____
Condensate Drain Outlet (inch FPS): _____
Sound Pressure Level (dBA): 51
Sound Power Level (dBA): _____
Unit Heat Rejection (kW): _____
Max. No. of Indoor Units: _____

System Details

Refrigerant Type: R-410A
Holding Refrigerant Charge (lbs): 3.75
Additional Charge (oz/ft): 0.22
Pre-charge Piping (Length ft): 33 ft
Max. Pipe Length (Total ft): 98.4 ft
Max. Pipe Length (Vertical ft): 65.6 ft

Cooling Operation Range (°F): 14 - 115
Cooling Range w/Baffle (°F): 0 - 115
Heating Operation Range (°F): 5 - 77
Heating Range w/Baffle (°F): 0 - 77
Cooling Inlet Water Temp (°F): _____
Heating Inlet Water Temp (°F): _____
Water Flow Range (GPM): _____

Project Name: _____
Location: _____
Engineer: _____
Submitted to: _____
Submitted by: _____
Reference: _____

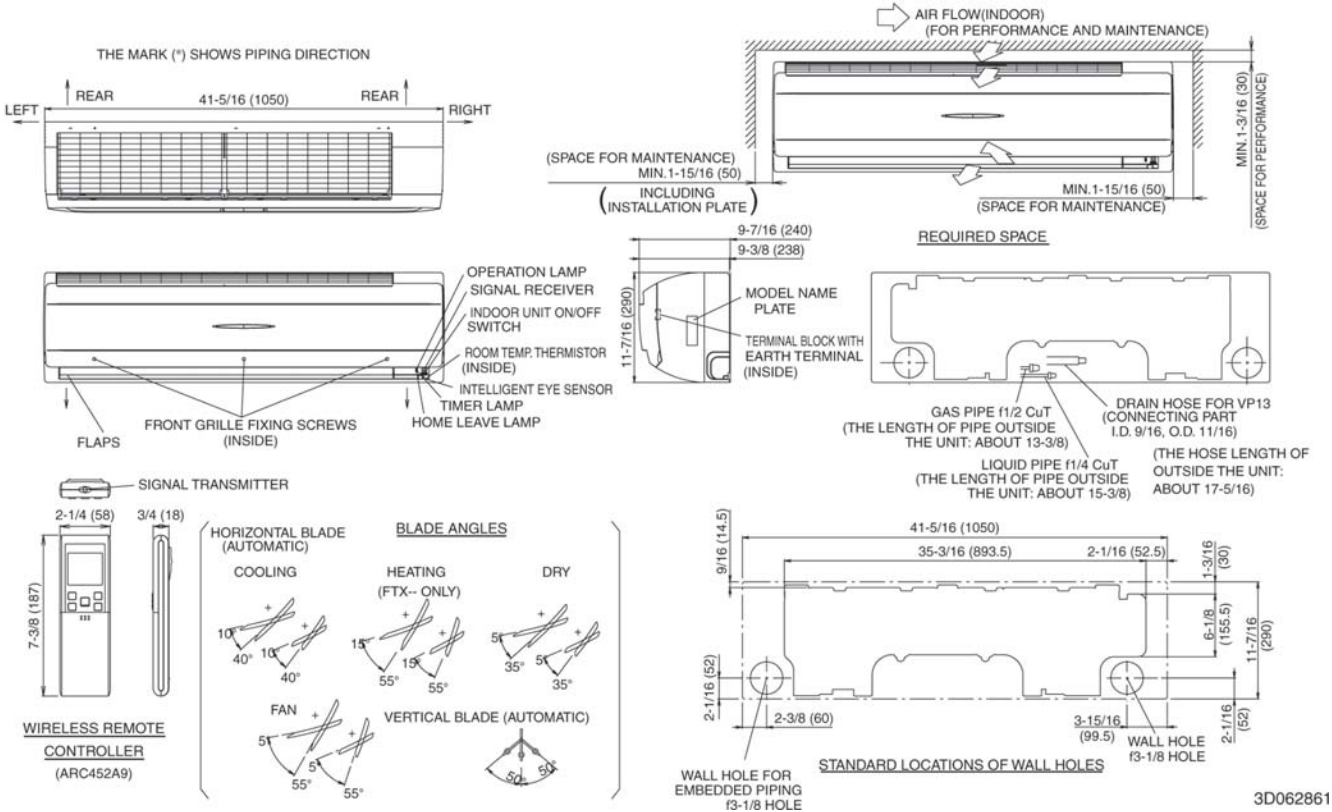
Approval: _____
Date: _____
Construction: _____
Unit #: _____
Drawing #: _____



Project Name: _____
 Location: _____
 Engineer: _____
 Submitted to: _____
 Submitted by: _____
 Reference: _____

Approval: _____
 Date: _____
 Construction: _____
 Unit #: _____
 Drawing #: _____

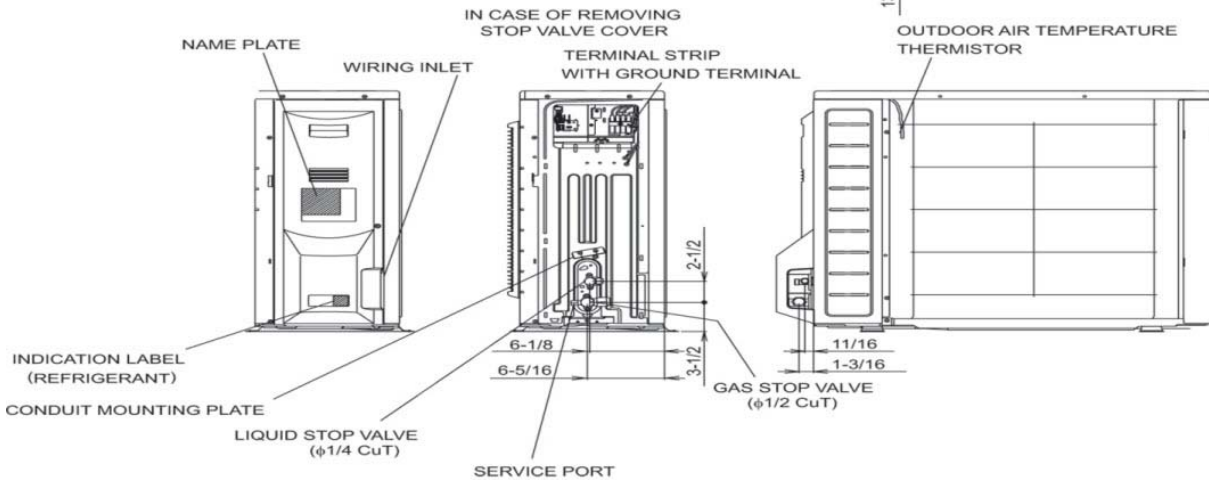
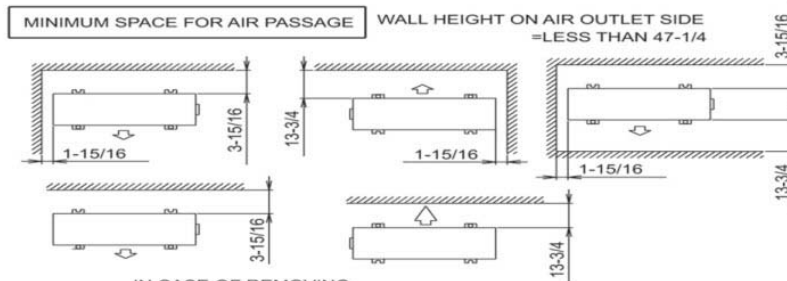
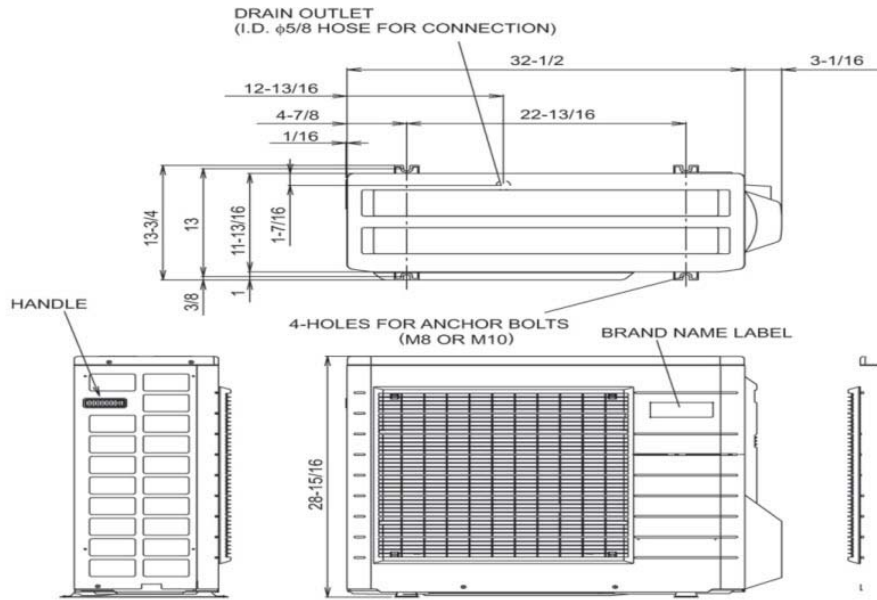
Dimensional Drawing - Indoor Unit



Project Name: _____
 Location: _____
 Engineer: _____
 Submitted to: _____
 Submitted by: _____
 Reference: _____

Approval: _____
 Date: _____
 Construction: _____
 Unit #: _____
 Drawing #: _____

Dimensional Drawing - Condensing Unit



Project Name: _____
Location: _____
Engineer: _____
Submitted to: _____
Submitted by: _____
Reference: _____

Approval: _____
Date: _____
Construction: _____
Unit #: _____
Drawing #: _____

Notes

Options include Wind Baffle, Wired Remote Controller, Mounting Bracket, Std U.S. Warranty: 7yrs Compressor, 5yrs Parts, 1yr Limited Labor