



# DX13S COMMERCIAL

THREE-PHASE  
SPLIT SYSTEM AIR CONDITIONERS  
3, 4, & 5 TONS

## SUBMITTAL DATA FORM

Job Name \_\_\_\_\_

Location \_\_\_\_\_

Purchaser \_\_\_\_\_

Order No. \_\_\_\_\_

Engineer \_\_\_\_\_

Unit No. \_\_\_\_\_

Model No. \_\_\_\_\_

Unit Designation \_\_\_\_\_

Performance Data Certified By: \_\_\_\_\_



### ■ Standard Features

- R-410A chlorine-free refrigerant
- Energy-efficient compressor
- Factory-installed filter drier
- Copper tube/enhanced aluminum fin coil
- Service valves with sweat connections and easy-access gauge ports
- Contactor with lug connection
- Ground lug connection
- ARI Certified; ETL Listed

### ■ Cabinet Features

- Innovative sound control top design
- Steel louver coil guard
- Heavy-gauge galvanized-steel cabinet
- Attractive Nickel Gray powder-paint finish
- Top and side maintenance access
- Single-panel access to controls with space provided for field-installed accessories
- When properly anchored, meets the 2001 Florida Building Code unit integrity requirements for hurricane-type winds (Anchor bracket kits available.)



\* Complete warranty details available from your local dealer or at [www.daikincomfort.com](http://www.daikincomfort.com).

# PERFORMANCE DATA FOR SPLIT SYSTEM

**OUTDOOR UNIT:** \_\_\_\_\_

**Cooling Performance**

Total Capacity \_\_\_\_\_ MBH

Sensible Capacity \_\_\_\_\_ MBH

Outdoor Design TMP \_\_\_\_\_ °F DB / WB

Air Temp entering \_\_\_\_\_

Evaporator Coil \_\_\_\_\_ °F

Power Input Required \_\_\_\_\_ kW  
(less blower motor)

**INDOOR UNIT:** \_\_\_\_\_

**Heating Performance**

Total Heating Capacity \_\_\_\_\_ kW  
\_\_\_\_\_ BTU/h

**Supply Air Blower Performance**

Total Supply Air \_\_\_\_\_ CFM

Ext. Static Pressure \_\_\_\_\_ IWG

Blower Speed \_\_\_\_\_ RPM

Power Output Required \_\_\_\_\_ BHP

Motor Ratings \_\_\_\_\_ HP

Power Input Required \_\_\_\_\_ kW

**Electrical Data**

Power Supply \_\_\_\_\_

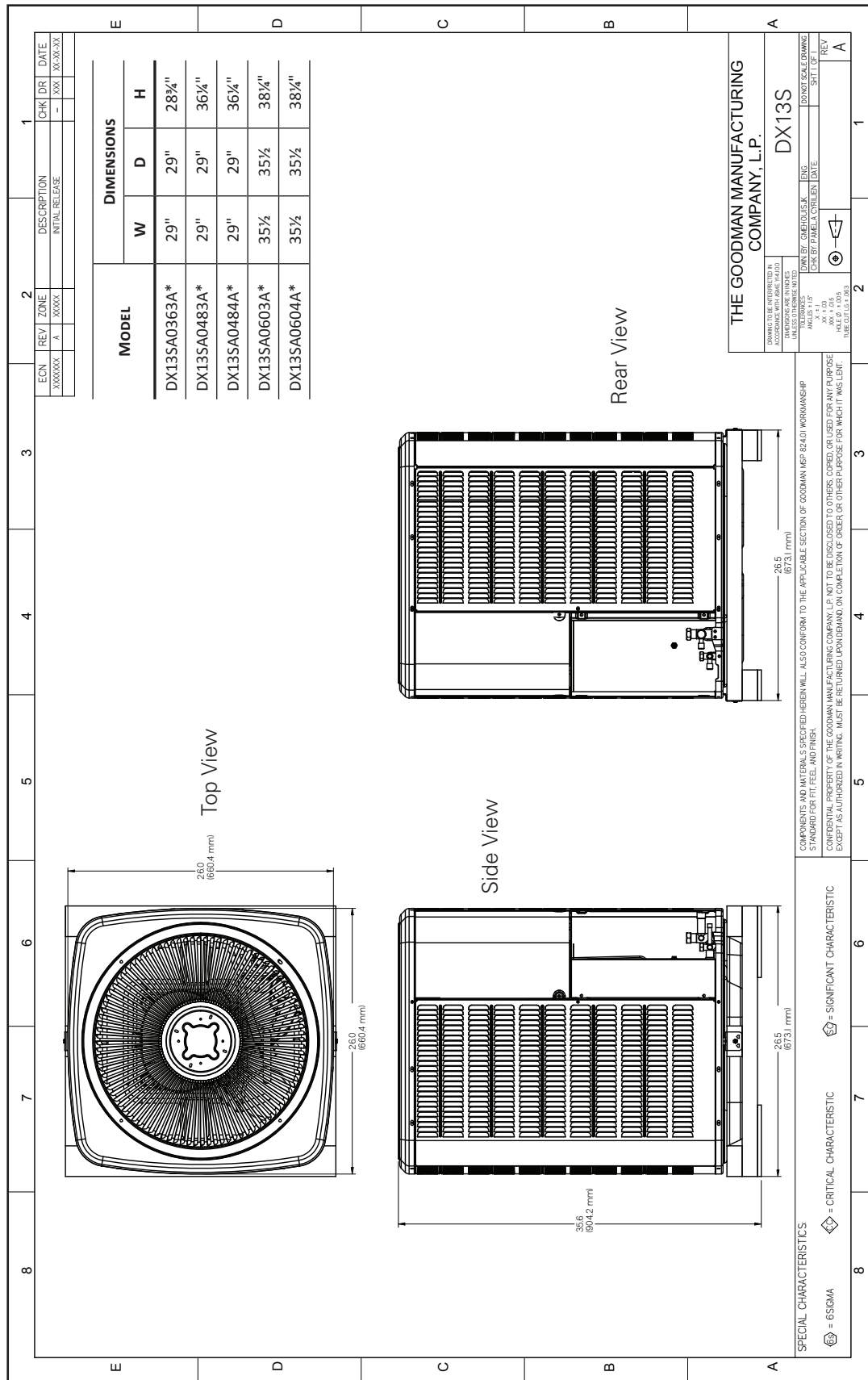
Total Unit Amps \_\_\_\_\_

**Max Overcurrent Device:**

Fuse \_\_\_\_\_ Breaker \_\_\_\_\_ Amps \_\_\_\_\_

## NOTES

# CERTIFIED DIMENSIONS



## ACCESSORIES LIST

ITEM #	DESCRIPTION	DX13R 0363**	DX13R 0483**	DX13R 0484*	DX13R 0603**	DX13R 0604**	√
ABK-20	Anchor Bracket Kit ^	x	x	x	x	x	
ASC-01	Anti-Short Cycle Kit	x	x	x	x	x	
FSK01A <sup>1</sup>	Freeze Protection Kit	x	x	x	x	x	
LSK01A <sup>2</sup>	Liquid Line Solenoid Kit	x	x	x	x	x	
LAKT01	Low Ambient Kit	x	x	x	x	x	
0163R00002	Crankcase heater	x					
0163R00003	Crankcase heater		x		x		
0163R00004	Crankcase Heater			x		x	
OY18-60A	Outdoor Thermostat	x	x	x	x	x	
TX3N4 <sup>2</sup>	TXV Kit	x					
TX5N4 <sup>2</sup>	TXV Kit		x	x	x	x	

^ Contains 20 brackets; four brackets needed to anchor unit to pad

<sup>1</sup> Installed on indoor coil

<sup>2</sup> Field-installed, non-bleed, expansion valve kit — Condensing units and heat pumps with reciprocating compressors require the use of start-assist components when used in conjunction with an indoor coil using a non-bleed thermal expansion valve refrigerant metering device or liquid line solenoid kit.