

7½- TO 12½-TON THREE-PHASE PACKAGED AIR CONDITIONERS UP TO 11.3 EER

SUBMITTAL DATA FORM

Job Name _____

Location _____

Purchaser _____

Order No. _____

Engineer _____

Unit No. _____

Model No. _____

Unit Designation _____

Performance Data Certified By: _____

■ Standard Features

- R-410A chlorine-free refrigerant
- High-efficiency scroll compressors
- Two-stage cooling
- Copper tube / aluminum fin coils
- Contactor with lugs
- High- and low-pressure switches
- High-capacity, steel-cased filter drier
- Heater kits with single-point entry
- 24-volt terminal strip
- Convertible
- Easy to service
- Built-in filter rack with standard 2" filters
- AHRI Certified; ETL Listed

■ Cabinet Features

- Heavy-gauge, galvanized-steel cabinet with UV-resistant powder-paint finish
- Condenser Hail Guards
- Full Perimeter Rail
- Sloped drain pan



* Complete warranty details available from your local dealer or at www.daikincomfort.com.

PERFORMANCE DATA

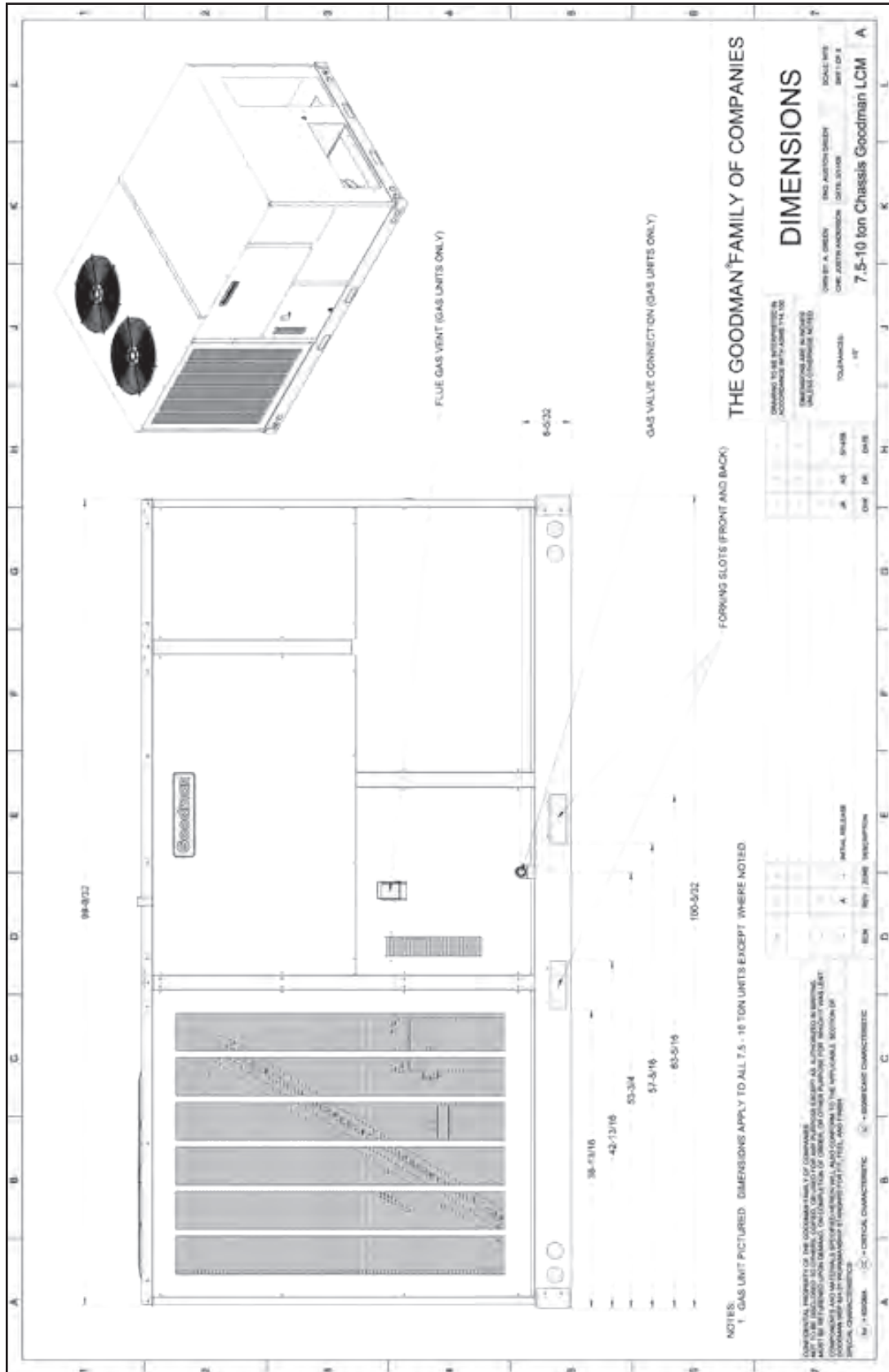
Cooling Performance		
Tota Capacity	_____	MBH
Sensible Capacity	_____	MBH
Outdoor Design TMP	_____	°F DB / WB
Air Temp entering	_____	
Evaporator Coil	_____	°F
Power Input Required (less blower motor)	_____	kW

Heating Performance		
Total Heating Capacity	_____	kW
	_____	BTU/h

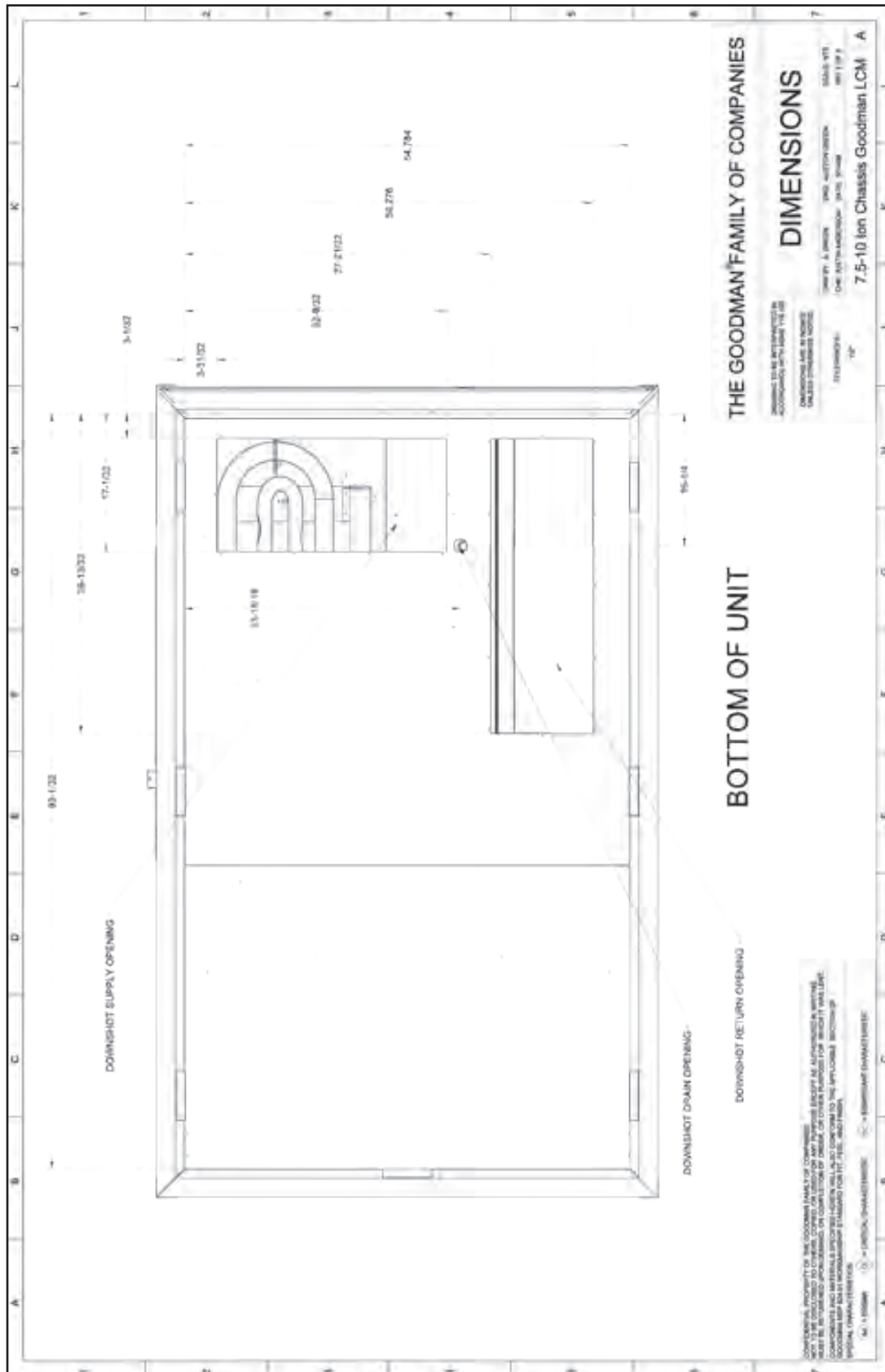
Supply Air Blower Performance		
Total Supply Air	_____	CFM
Ext. Static Pressure	_____	IWG
Blower Speed	_____	RPM
Power Output Required	_____	BHP
Motor Ratings	_____	HP
Power Input Required	_____	kW

Electrical Data		
Power Supply	_____	
Total Unit Amps	_____	Amps
Max Overcurrent Device:		
Fuse	_____	Breaker _____ Amps _____

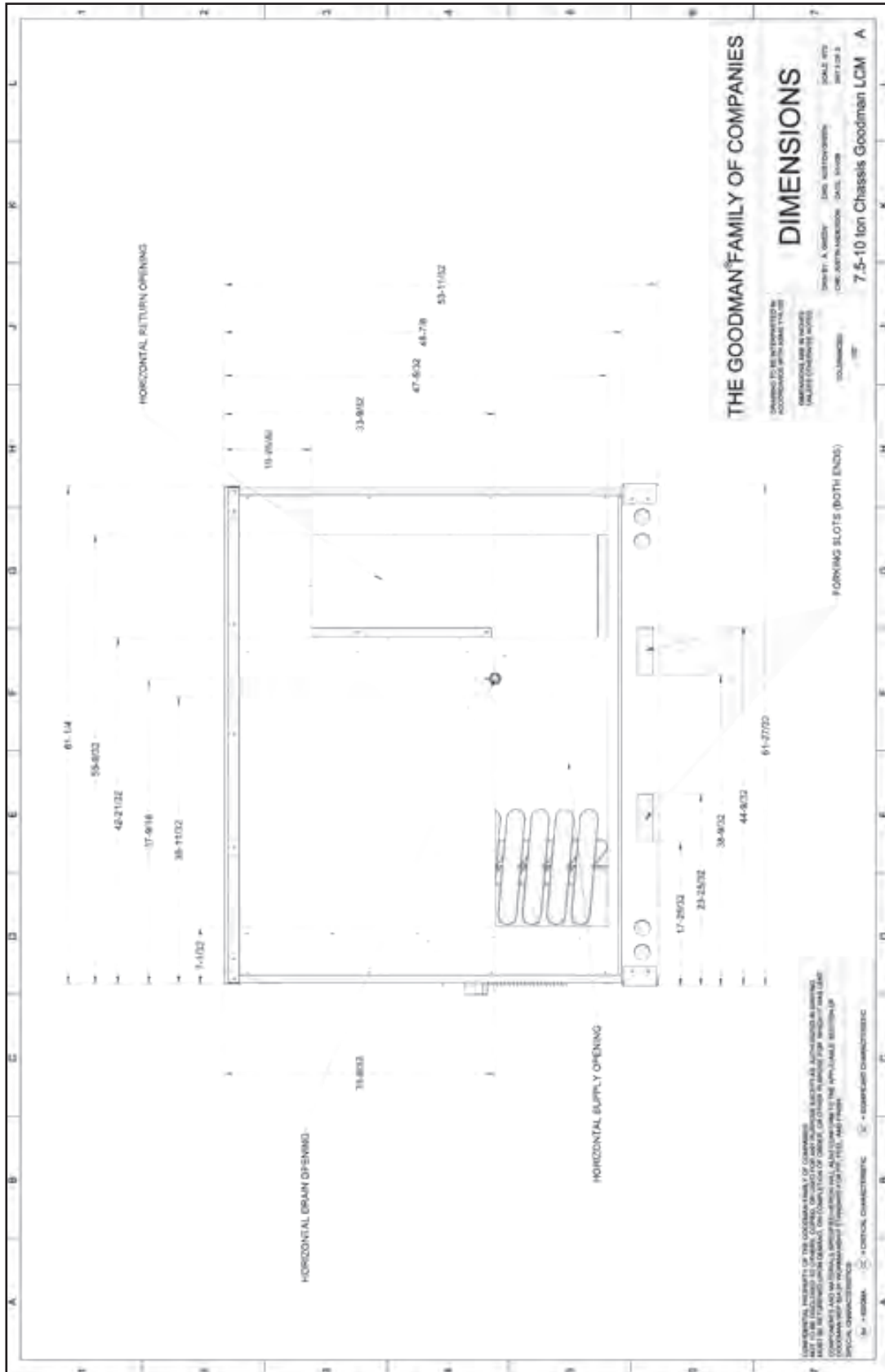
CERTIFIED DIMENSIONS — SIDE VIEW



CERTIFIED DIMENSIONS — BOTTOM VIEW



CERTIFIED DIMENSIONS — END VIEW

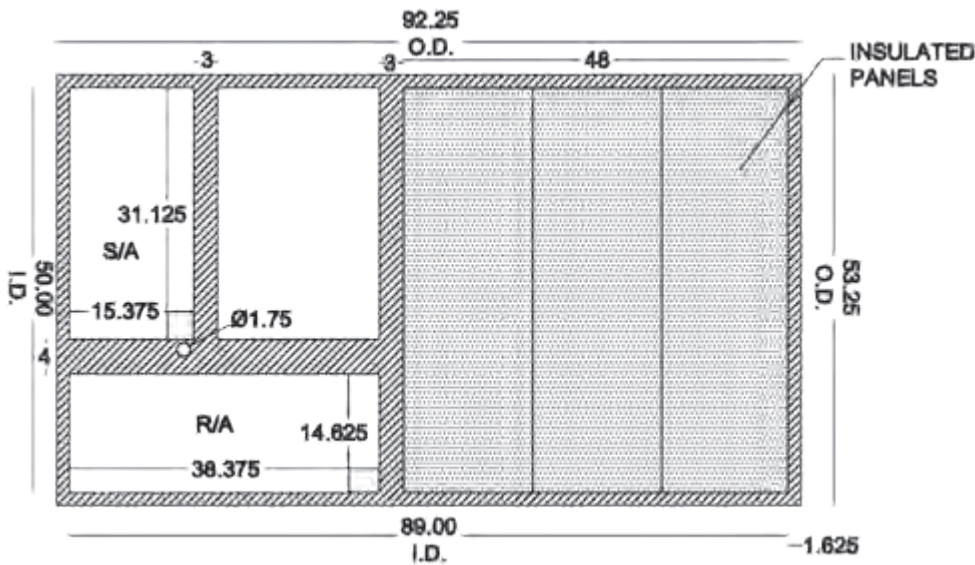


ACCESSORIES LIST (DETAILED SPECIFICATIONS BEGIN ON THE FOLLOWING PAGE.)

FILED-INSTALLED ITEM #	DESCRIPTION	FITS MODEL SIZES	FIELD- INSTALLED	FACTORY- INSTALLED	✓
14CURB90150	14" Roof Curb	7½-12½ tons	√		
D25MFD90150	25% Manual Fresh Air Damper	7½-12½ tons	√		
D25MFD90150	25% Motorized Fresh Air Damper	7½-12½ tons	√		
DBRD3672	Barometric Relief Damper (2 required)	7½-12½ tons	√		
DDNBBS90150	Burglar Bar Sleeves: includes Supply & Return	7½-12½ tons	√		
CDK120	Concentric Duct Kit	10 tons	√		
CDK150	Concentric Duct Kit	12½ tons	√		
CDK90102	Concentric Duct Kit	7½-8½ tons	√		
HailGD02D	Condenser Coil Hail Guard	7½-10 tons	√		
HailGD05D	Condenser Coil Hail Guard	12½ tons	√		
	Convenience Outlet: Powered	All Models		√	
	Convenience Outlet: Non Powered	All Models		√	
	Disconnect Switch (non-fused)	All Models		√	
DDNECNJ90150	Downflow Economizer	7½-12½ tons	√	√	
DDNSQRD9020	Downflow Square-to-Round Adapter 20" Round	7½ tons	√		
	Electric Heat Kits	All Models	√	√	
HSKT090 ¹	High-Static Kit (230/460v)	7½ tons	√		
HSKT090G ¹	High-Static Kit (230/460v)	8½ tons	√		
HSKT120 ¹	High-Static Kit (230/460v)	10 tons	√		
HSKT150 ¹	High-Static Kit (230/460v)	12½ tons	√		
HSKT090-7 ¹	High-Static Kit (575v)	7½ tons	√		
HSKT090G-7 ¹	High-Static Kit (575v)	8½ tons	√		
HSKT120-7 ¹	High-Static Kit (575v)	10 tons	√		
HSKT150-7 ¹	High-Static Kit (575v)	12½ tons	√		
DHZECNJ90150	Horizontal Economizer	7½-12½ tons	√		
GHRC-1	Hurricane Restraint Clips	All Models	√		
LAKT03	Low-Ambient Kit	7½ - 12½ tons	√	√	
DPE901502	Power Exhaust (208/230v)	7½-12½ tons	√		
DPE901504	Power Exhaust (460v)	7½-12½ tons	√		
DPE901507	Power Exhaust (575v)	7½-12½ tons	√		
IP90150	Roof Curb Insulated Panels	7½-12½ tons	√		
	Smoke Detector	All Models		√	

¹ HSKT High-Static Kits are for use with standard single-speed belt-drive units only.

ROOF CURB — #14CRB90150



SPECIFICATIONS

- 18-Gauge Construction
- 1 x 4 Wood Nailer attached to top of the curb
- Shipped knocked down with all hardware
- Gasket included
- Bed-Rail style corners

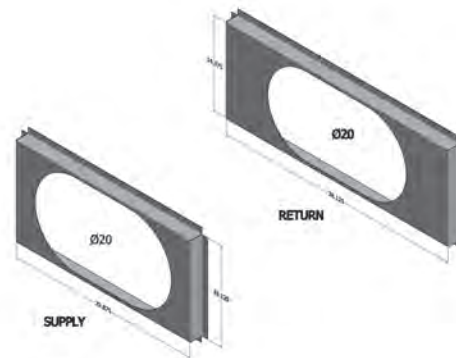
Note: outside duct dimension should be ½" less than opening dimensions above.

NO CURB ADAPTER REQUIRED WHEN REPLACING CARRIER & BRYANT MODELS

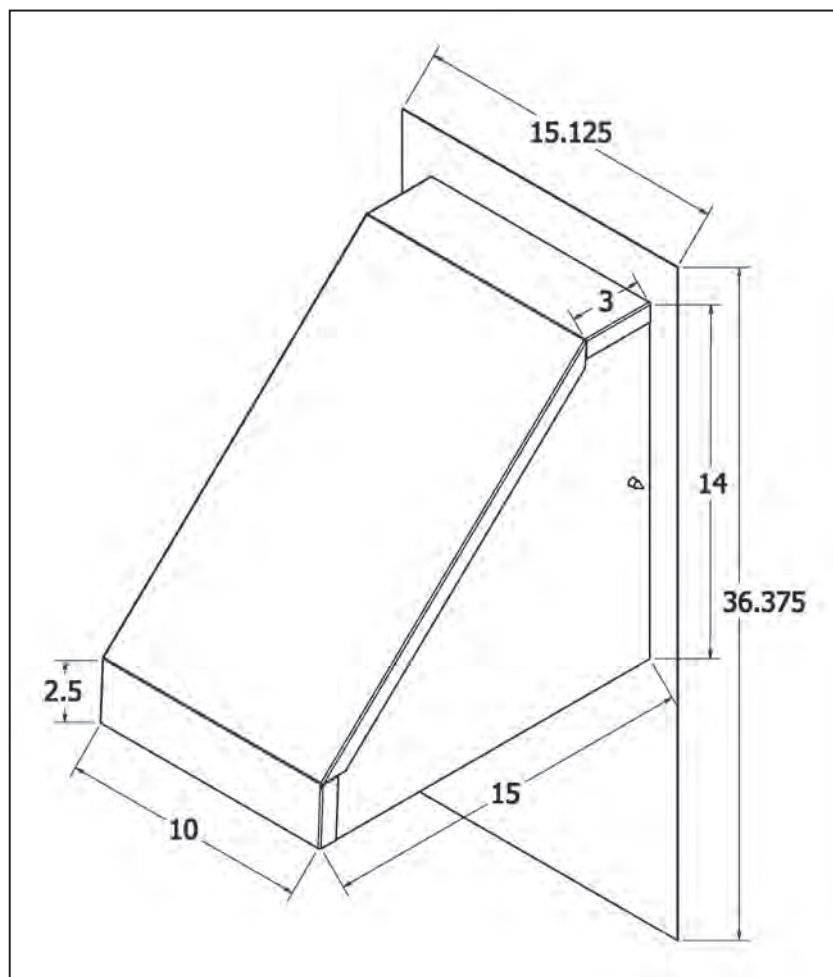
No curb adapter is required when replacing an existing Carrier or Bryant RTU with a Goodman RTU in the following situations. The footprints and locations of the return and supply ductwork match.

NEW UNIT	EXISTING CARRIER	EXISTING BRYANT
7½ TO 12½ TONS CPC, CPG, CPH	48/50 TJ, LJ, DJ, QJ 48/50TM, HJ 008 - 014	580C-D, 558C-D, 548C-D 580F, 558F, 581B 090 - 150

7½-TON SQUARE-TO-ROUND — #DNSQRRND90



MANUAL FRESH AIR DAMPER — #D25MFD90150
MOTORIZED FRESH AIR DAMPER — #D25MFD90150



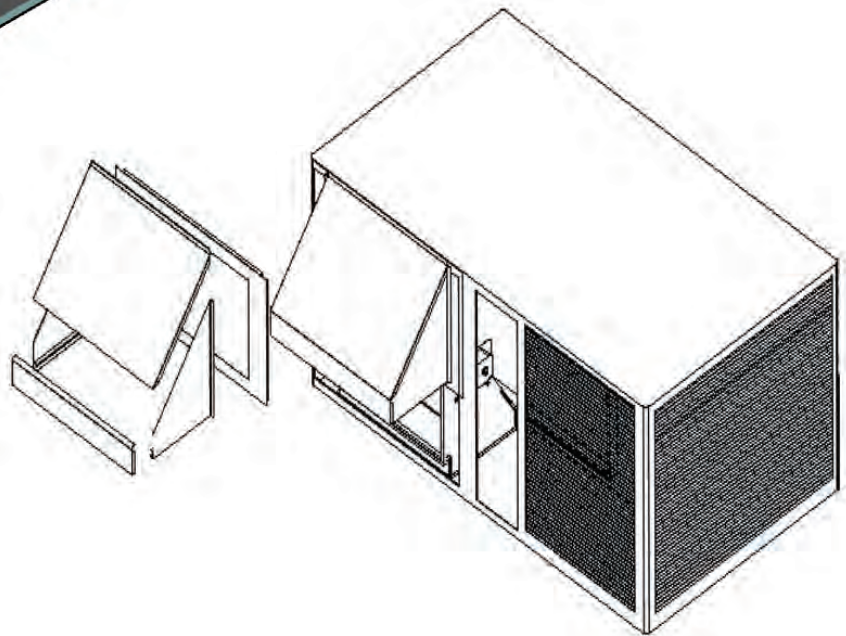
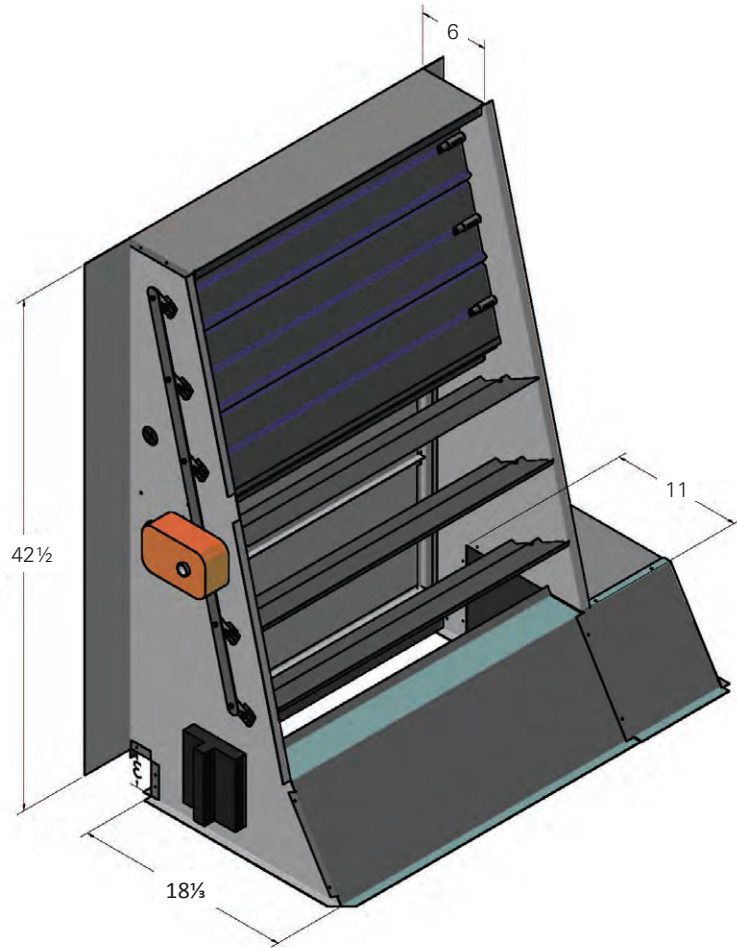
SPECIFICATIONS

Manual Damper

- Provides up to 25% fresh air
- Locking selection knob provides constant opening
- Painted to match the unit
- Fits all 7½- to 12½-ton package units in all fuels

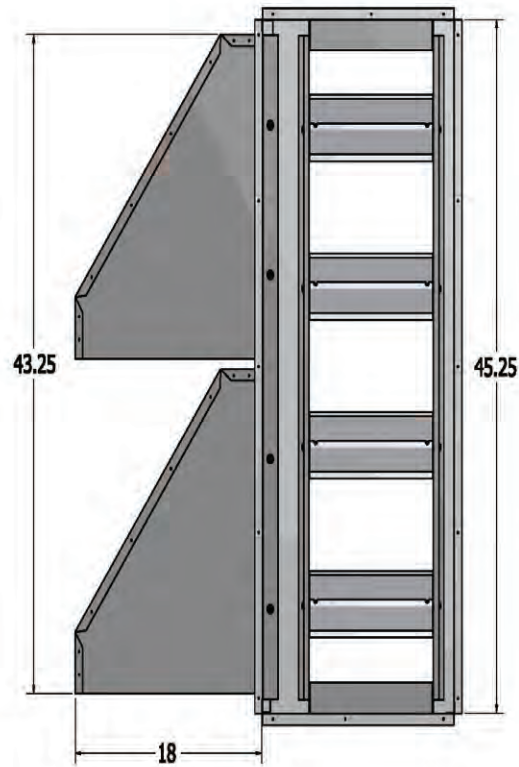
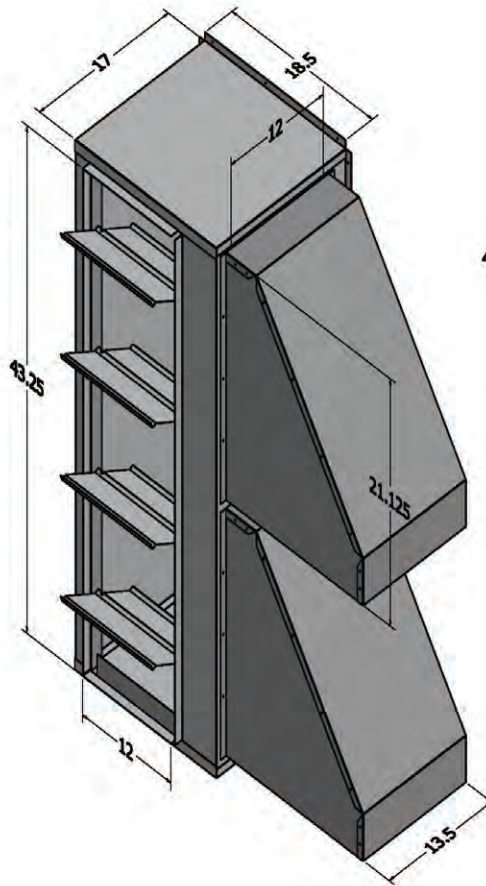
Motorized Damper

- 24 VAC Damper motor with spring return
- Fully assembled and factory wired
- Painted to match the unit
- Fits all 7½- to 12½-ton package units in all fuels

DOWNFLOW ECONOMIZER — #DDNECNJ90150**SPECIFICATIONS**

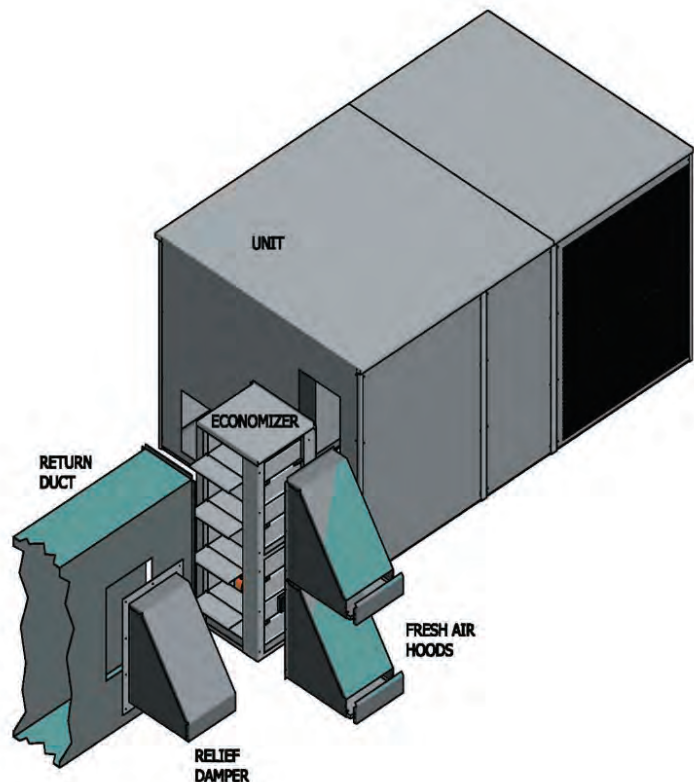
- Fully modulating
- Up to 100% fresh air
- Integral barometric relief
- Hoods painted to match unit
- Honeywell economizer contro
- Single adjustable enthalpy control convertible to dual enthalpy
- Adjustable minimum fresh air
- Factory wired
- Fits all 7½- to 12½-ton units

HORIZONTAL ECONOMIZER — #DHZECNJ90150

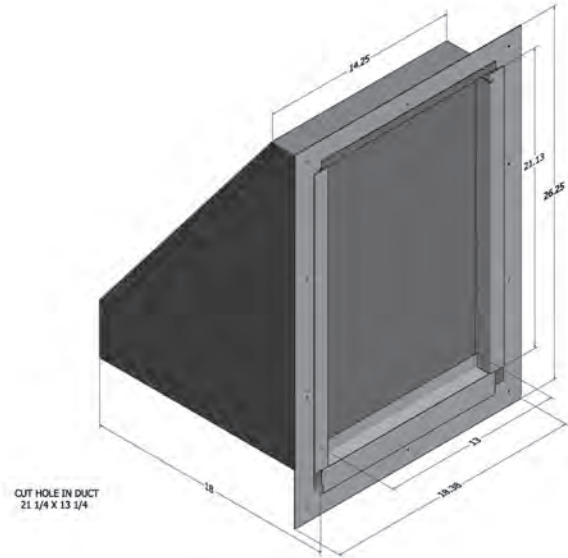


SPECIFICATIONS

- Fully modulating
- Up to 100% fresh air
- Honeywell economizer control
- Single adjustable enthalpy control convertible to dual enthalpy
- Adjustable minimum fresh air
- Factory wired
- Fits all 7½- to 12½-ton units

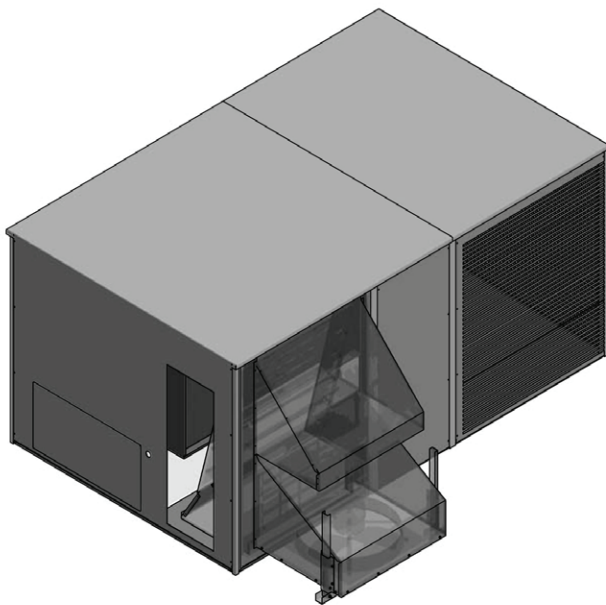


BAROMETRIC RELIEF DAMPER — #DBRD3672



POWER EXHAUST FOR 208/230v UNITS — #PE901502

POWER EXHAUST FOR 460v UNITS — # PE901504



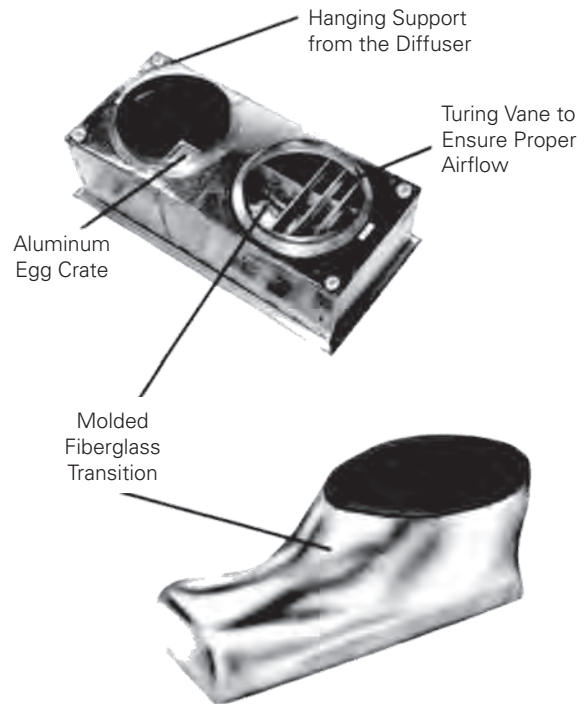
CONCENTRIC DUCT KIT — #CDK90102 / #CDK120 / #CDK150



Light Commercial
T-Bar Ceiling



Commercial
T-Bar Ceiling



SPECIFICATIONS

- All-aluminum diffuser with aluminum return air egg crate
- Built-in anti-sweat gasket
- Molded fiberglass transition (through five tons)
- Built-in hanging supports
- Diffuser box constructed of fiberglass duct board (through 7½ tons) or sheet metal