

Project Name: \_\_\_\_\_  
 Location: \_\_\_\_\_  
 Engineer: \_\_\_\_\_  
 Submitted to: \_\_\_\_\_  
 Submitted by: \_\_\_\_\_  
 Reference: \_\_\_\_\_

Approval: \_\_\_\_\_  
 Date: \_\_\_\_\_  
 Construction: \_\_\_\_\_  
 Unit #: \_\_\_\_\_  
 Drawing #: \_\_\_\_\_

### **Performance**

*Indoor Unit Model No:* BPMKS049A3U  
*Outdoor Unit Model No:* \_\_\_\_\_  
*Rated Cooling Capacity (Btu/hr):* 48000  
*Sensible Capacity (Btu/hr):* N/A  
*Max/Min Cooling Capacity (Btu/hr / kW):* N/A/N/A  
*Cooling Input Power (kW):* \_\_\_\_\_  
*SEER:* data book  
*Rated Heating Capacity (Btu/hr):* N/A  
*Max/Min Heating Capacity (Btu/hr / kW):* N/A/N/A  
*Heating Input Power (kW):* \_\_\_\_\_  
*Heating COP (Btu/hr / Btu/hr):* data book  
*HSPF:* data book

*Indoor Unit Type:* Port Branch Provider box for RMXS48LVJ  
*Condensing Unit Type:* \_\_\_\_\_

*Rated Cooling Conditions* Indoor: \_\_\_\_\_  
 Outdoor: \_\_\_\_\_

*Rated Heating Conditions* Indoor: \_\_\_\_\_  
 Outdoor: \_\_\_\_\_

*Rated Piping Length(ft)* \_\_\_\_\_  
*Rated Height Separation(ft)* \_\_\_\_\_

### **Indoor Unit Details**

*Power Supply (V/Hz/Ph):* 208-230/60/1ph  
*Power Supply Connections:* L1, L2, Ground  
*Min Circuit Amps MCA (A):* 0.1  
*Max Overcurrent Amps MFA (A):* 15  
*Dimensions (HxWxD):* 7-1/16x11-9/16x13-3/4  
*Panel (HxWxD):* N/A  
*Net Weight (lbs):* 20  
*Weight with Panel (lbs):* \_\_\_\_\_

*Airflow Rate (CFM wet coil)* N/A/N/A  
*Moisture Removal (pt/h):* \_\_\_\_\_  
*Gas Pipe Connection (inch):* 5/8  
*Liquid Pipe Connection (inch):* 1/4  
*Condensate Connection (inch):* \_\_\_\_\_  
*Sound Pressure Level (dBA):* \_\_\_\_\_  
*Sound Power Level (dBA):* \_\_\_\_\_  
*Static Pressure Rated/Max (inWg)* 0 / 0/0

### **Condensing Unit Details**

*Power Supply (V/Hz/Ph):* \_\_\_\_\_  
*Power Supply Connections:* \_\_\_\_\_  
*Min. Circuit Amps MCA (A):* \_\_\_\_\_  
*Max. Overcurrent Amps MFA (A):* \_\_\_\_\_  
*Max. Starting Current MSC(A):* \_\_\_\_\_  
*Rated Load Amps RLA (A):* 0.05  
*Dimensions (HxWxD):* N/A  
*Net Weight (lbs):* \_\_\_\_\_

*Compressor Type:* Inverter  
*Capacity Control Range (%):* \_\_\_\_\_  
*Airflow Rate (CFM):* N/A  
*Gas Pipe Connection (inch):* \_\_\_\_\_  
*Liquid Pipe Connection (inch):* \_\_\_\_\_  
*Sound Pressure Level (dBA):* 32  
*Sound Power Level (dBA):* 32c / 32h

### **System Details**

*Refrigerant Type:* R-410A  
*Holding Refrigerant Charge (lbs):* data book  
*Additional Charge (oz/ft):* data book  
*Pre-charge Piping (Length ft):* data book  
*Max. Pipe Length (Total ft):* data book

*Max. Pipe Length (Vertical ft):* data book  
*Cooling Operation Range (°F):* 35 - 104 (Mech. Room)  
*Cooling Range w/Baffle (°F):* \_\_\_\_\_  
*Heating Operation Range (°F):* 35 - 104 (Mech. Room)  
*Heating Range w/Baffle (°F):* \_\_\_\_\_

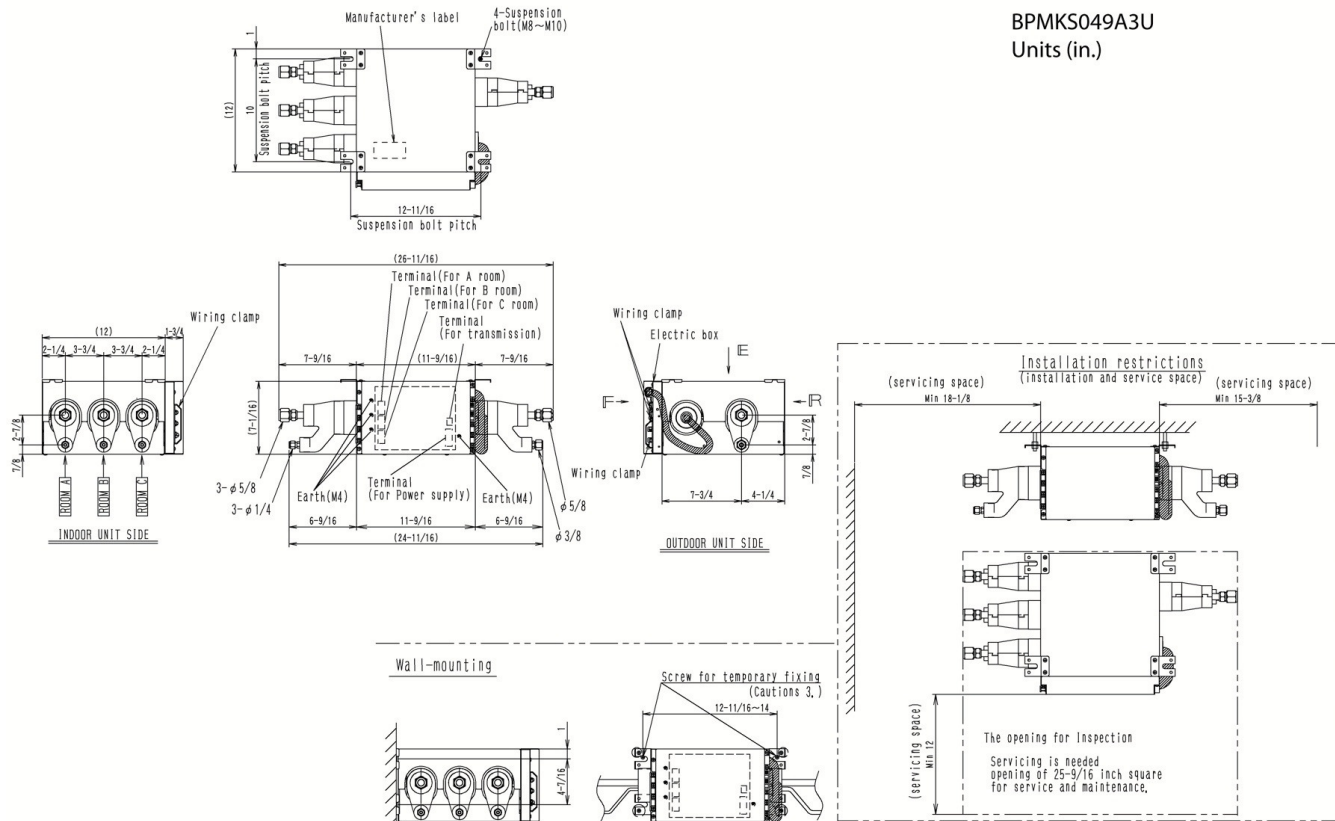
Project Name: \_\_\_\_\_  
 Location: \_\_\_\_\_  
 Engineer: \_\_\_\_\_  
 Submitted to: \_\_\_\_\_  
 Submitted by: \_\_\_\_\_  
 Reference: \_\_\_\_\_

Approval: \_\_\_\_\_  
 Date: \_\_\_\_\_  
 Construction: \_\_\_\_\_  
 Unit #: \_\_\_\_\_  
 Drawing #: \_\_\_\_\_

## Dimensional Drawing - Indoor Unit

BPMKS049A3U

BPMKS049A3U  
 Units (in.)



Project Name: \_\_\_\_\_  
Location: \_\_\_\_\_  
Engineer: \_\_\_\_\_  
Submitted to: \_\_\_\_\_  
Submitted by: \_\_\_\_\_  
Reference: \_\_\_\_\_

Approval: \_\_\_\_\_  
Date: \_\_\_\_\_  
Construction: \_\_\_\_\_  
Unit #: \_\_\_\_\_  
Drawing #: \_\_\_\_\_

**BPMKS049A3U**



**BPMKS049A3U**

Only for Heat Recovery Systems, Std U.S.  
Warranty: 7yrs Compressor, 1yrs Parts

Only for Heat Recovery Systems, Std U.S.  
Warranty: 7yrs Compressor, 1yrs Parts