



Builder's Best, Inc.
201 Broiles Drive
Jacksonville, TX 75766
903-586-8283
sales@venting.biz
BuildersBest.com

GRV820 & GRV824 Galvanized Black Metal Roof Cap

DESCRIPTION

The GRV is a heavy duty Galvanized Roof Vent hood with a black powder coat finish.

PRODUCT FEATURES

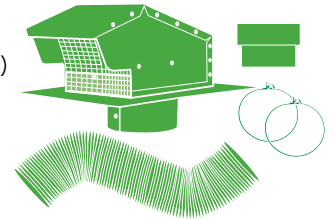
- Riveted construction, no caulk
- Draw-formed base
- Two pre-drilled mounting holes

PRODUCT SPECIFICATIONS

- 26 gauge galvanized steel with high performance polyester powder coated finish
- Flapper
- Available flush without collar and with collar
- Available with and without 1/4" x 1/4" removable screen

KIT 012640 INCLUDES:

- One roof cap with 4" diameter collar (PN 012635)
- One 4" x 8' UL® 181 Foil Duct
- One 3-4" Plastic increaser/reducer
- Two plastic Zip Torq™ clamps



DIMENSIONS & TESTING

- Dimensions on page 2
- ASTM testing on page 2



012635



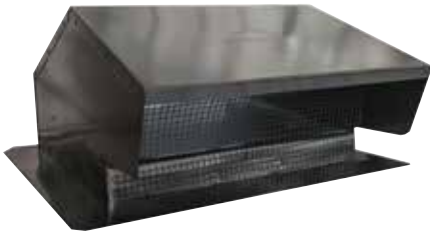
012636



012633



012634



Part Numbers GRV820 Flapper, No Screen

Each #	Dia.	Tail	Flapper	Screen	Case #	Qty	Package	UPC?	UPC#
012642	4"	flush	flapper	n/a	012642	1	Ind. Box	•	722048126428
012643	4"	with collar	flapper	n/a	012643	1	Ind. Box	•	722048126435

Part Numbers GRV824 Flapper with Screen

Each #	Dia.	Tail	Flapper	Screen	Case #	Qty	Package	UPC?	UPC#
012635	4"	with collar	flapper	¼"x¼" removable	012635	1	Ind. Box	•	722048126350
012645	4"	with collar	flapper	¼"x¼" removable	012645	1	Display Box	•	722048126459
012636	4"	flush	flapper	¼"x¼" removable	012636	1	Ind. Box	•	722048126367
012646	4"	flush	flapper	¼"x¼" removable	012646	1	Display Box	•	722048126466
012632	6"	flush	flapper	¼"x¼" removable	012632	1	Ind. Box	•	722048126329
012633	6"	with collar	flapper	¼"x¼" removable	012633	1	Ind. Box	•	722048126336
012639	7"	with collar	flapper	¼"x¼" removable	012639	1	Ind. Box	•	722048126398
012634	6"-8" (3¼"x10")	flush	flapper	¼"x¼" removable	012634	1	Ind. Box	•	722048126343
012638	10"	flush	flapper	¼"x¼" removable	012638	1	Ind. Box	•	722048126381
Kit includes: Roof Cap, 4"x8' UL® 181 Foil Duct, one 3-4" Plastic Increaser Reducer, two ZipTorq clamps:									
012640	4"	with collar	flapper	¼"x¼" removable	012640	1	Display Box	•	722048126404

Label



Made in
the U.S.A.

Warranty

Complete Warranty Statement at <https://www.buildersbest.com>

GRV635 black roof cap metal specs V14 8/19/19



Builder's Best, Inc.
201 Broiles Drive
Jacksonville, TX 75766
903-586-8283
sales@venting.biz
BuildersBest.com

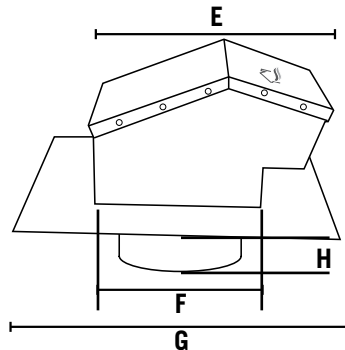
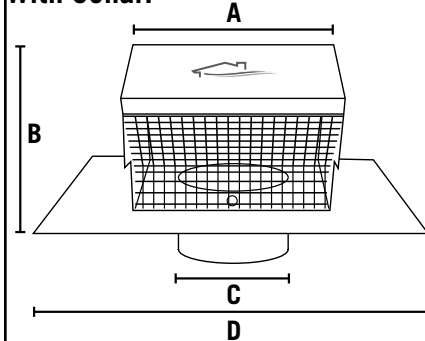
GRV820 & GRV824 Galvanized Black Metal Roof Cap

(PNs and Specs on reverse)

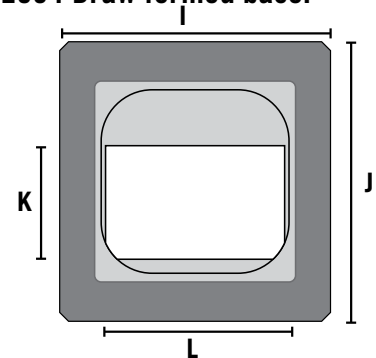
Dimensions (in inches)

Collar or Opening:		A	B	C	D	E	F	G	H	I	J	K	L
4"		6	4.75	4	10	8.5	6	11	2.5				
6"		8.5	7	6	14	12.25	8.5	14.4375	2.5				
7"		8.5	7	7	14	13.25	11	14.4375	2.5				
PN 012634			7		15.675	15.5	15.5		n/a	15.675	16	6.5	10.25
PN 012638			7		15.675	15.5	15.5		n/a	15.675	16	10.75	10.75

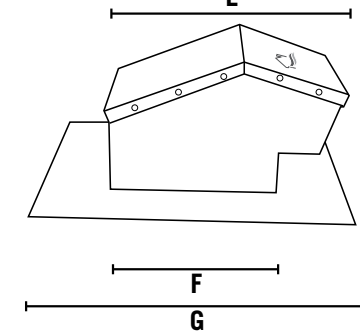
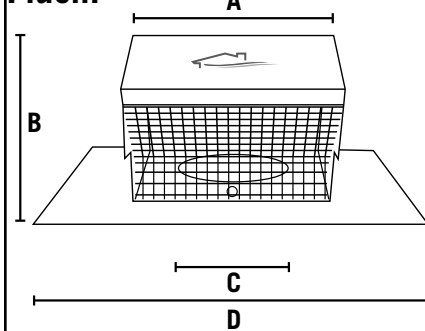
With Collar:



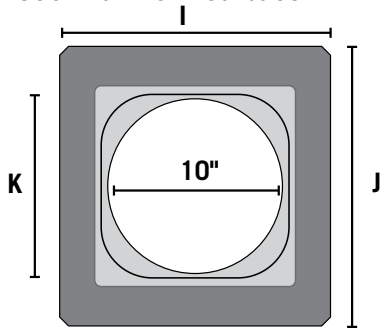
PN 012634 Draw formed base:



Flush:



PN 012638 Draw formed base:



Results of ASTM B117:

The three images are the results of supplementary standardized testing on the Builder's Best Black Metal Roof Cap. Anti-corrosion properties have been tested by means of a salt test. The ASTM B117 is a standardized test method where metal pieces with different coatings are placed in a conditioned test chamber. Subsequently, they were sprayed for 480 hours (20 days) with a sodium chloride solution. This accelerates the corrosion process, which allows rapid insight into the performance of the coating. Tests were conducted by a third party lab.

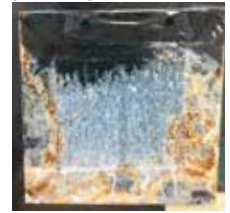
Builder's Best
coated galvanized steel



Leading Brand
painted cold rolled steel



Foreign brand
painted galvanized steel



Builder's Best black metal roof caps begin with galvanized steel which has some corrosion protection. Our high performance polyester powder coating showed very little corrosion. The leading brand uses cold rolled steel, which has no corrosion protection. Their paint coat showed some corrosion. Competitor X uses galvanized steel, which has some corrosion protection, however, the paint they used failed.