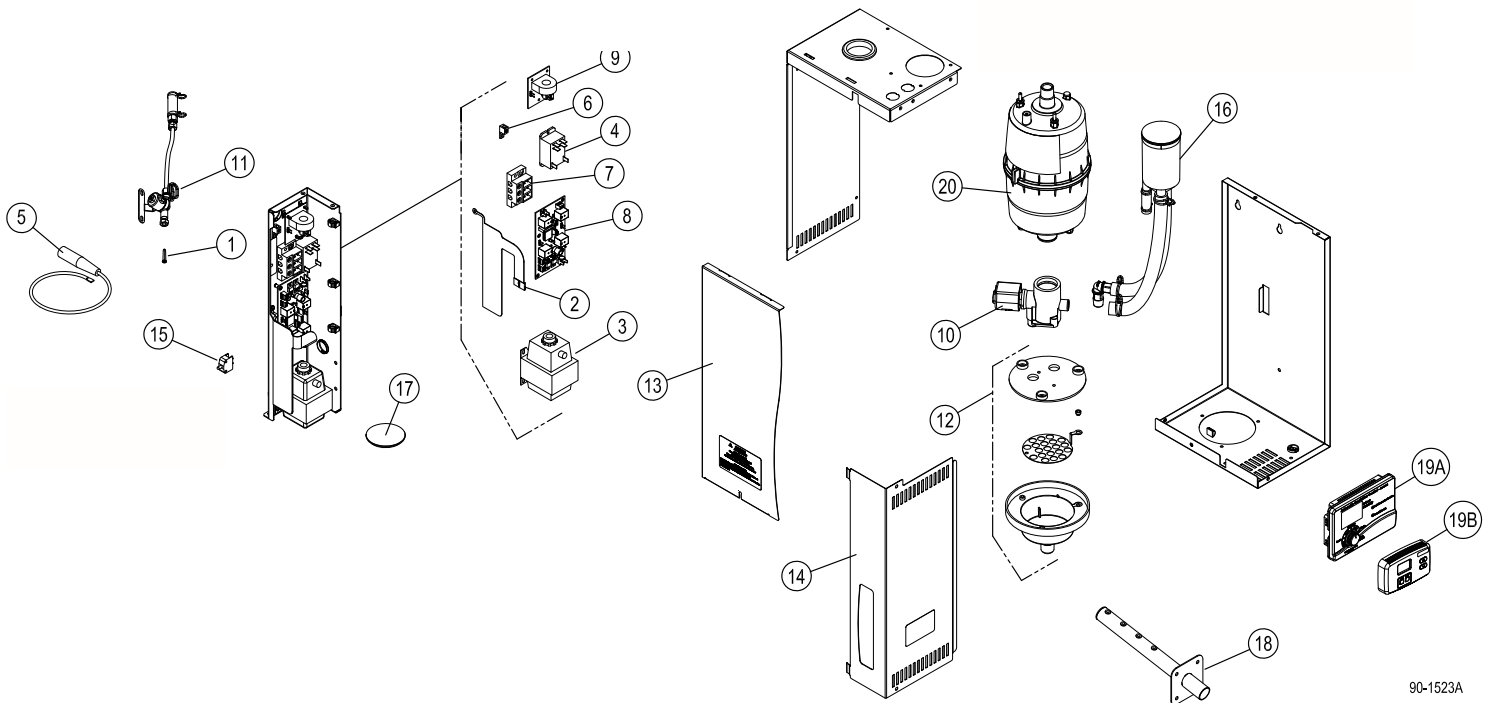


Model 800 Residential Steam Humidifier



90-1523A

| NO. | PART NAME | QTY/CTN | PART NO. |
|--------------------|--|---------|----------|
| 1 | Fill Valve In-line Strainer | 12 | 4004 |
| 2 | Membrane Switch | 1 | 4975 |
| 3A | Transformer, 120/24 VAC for 11.5 amp unit* & fill valve contained within housing | 1 | 4976 |
| 3B | Transformer, universal for units with fill valve inlet extending from bottom of housing | 1 | 5306 |
| 4 | Power Relay | 1 | 4977 |
| 5 | Electrode Wire | 1 | 4978 |
| 6 | Ground Lug | 1 | 4979 |
| 7A | Input Power Terminal Block 3-post for 11.5 amp unit* and fill valve contained within housing | 1 | 4980 |
| 7B | Input Power Terminal Block 2-post for 11.5 amp unit* and fill valve inlet extending from bottom of housing | 1 | 5307 |
| 7C | Input Power Terminal Block 2-post for 11.5/16.0 amp unit* | 1 | 5354 |
| 8 | Internal Control Circuit Board | 1 | 4981 |
| 9 | Current Sensing Circuit Board | 1 | 4982 |
| 10 | Drain Valve | 1 | 4983 |
| 11A | Inlet Fill Valve and Water Feed System for unit with fill valve contained within housing | 1 | 4984 |
| 11B | Inlet Fill Valve and Water Feed System for unit with fill valve inlet extending from bottom of housing | 1 | 5309 |
| 12 | Drain Cup Assembly | 1 | 4985 |
| 13 | Front Panel and Screw | 1 | 4986 |
| 14 | Electrical Access Panel and Screw | 1 | 4987 |
| 15 | Safety Interlock Switch | 1 | 4988 |
| 16 | Fill Cup and Hoses | 1 | 4989 |
| 17 | Fill Cup Cap | 1 | 4990 |
| 18 | Steam Dispersion Tube and Screws | 1 | 4991 |
| 19A | Automatic Digital Control | 1 | 62 |
| 19B | Digital Manual Control (Wall Mounted) | 1 | 65 |
| 20 | Steam Canister and O-Ring | 6 | 80 |
| 21 | Transformer terminal block for unit with fill valve inlet extending from bottom of housing. | 1 | 5308 |
| 22 | O-Ring for Steam Canister | 6 | 5258 |
| OTHER PARTS | | | |
| | Fan Pack | 4 | 850 |
| | Saddle Valve | 1 | 4001 |
| | Drain Trap Assembly | 1 | 4028 |
| | Manual Humidistat and Blower Activation Relay | 1 | 4993 |
| | Airflow Proving Switch | 1 | 4592 |
| | High Humidity Limit Switch | 1 | 4594 |
| | Condensate Pump (Rated for 160° F) | 1 | 4856 |
| | Steam Hose (6ft) and Clamps | 1 | 4973 |
| | Drain Hose (10 ft.) and Clamps | 1 | 4974 |

* See data label on side of humidifier to determine if unit draws 11.5 amps or 11.5/16.0 amps.