

SUBMITTAL DATA FORM

Job Name _____
 Location _____
 Purchaser _____
 Order No. _____
 Engineer _____
 Unit No. _____
 Model No. _____
 Unit Designation _____
 Performance Data Certified By: _____

Standard Features

- High-efficiency scroll compressor
- High density foam compressor sound blanket
- SmartShift[®] technology with short-cycle protection
- Factory-installed bi-flow liquid line filter drier
- Factory-installed suction line accumulator
- Factory-installed compressor crankcase heater
- Factory-installed high-capacity muffler
- Service valves with sweat connections and easy access to gauge ports
- Copper tube/enhanced aluminum fin coil
- Fully charged for 15' of tubing length
- Contactor with lug connection
- Ground lug connection
- AHRI Certified; ETL Listed

Cabinet Features

- Amana[®] brand sound control top design
- Wire fan discharge grille
- Steel louver coil guard
- Baked-on powder-paint finish
- Rust-resistant screws
- Compact footprint
- Top and side maintenance access
- Single-panel access to controls with space provided for field-installed accessories
- When properly anchored, meets the 2010 Florida Building Code unit integrity requirements for hurricane-type winds (Anchor bracket kits available.)



* Complete warranty details available from your local dealer or at www.amana-hac.com To receive the Lifetime Unit Replacement Limited Warranty (good for as long as you own your home) and the 10-Year Parts Limited Warranty, online registration must be completed within 60 days of installation. Online registration is not required in California or Québec.

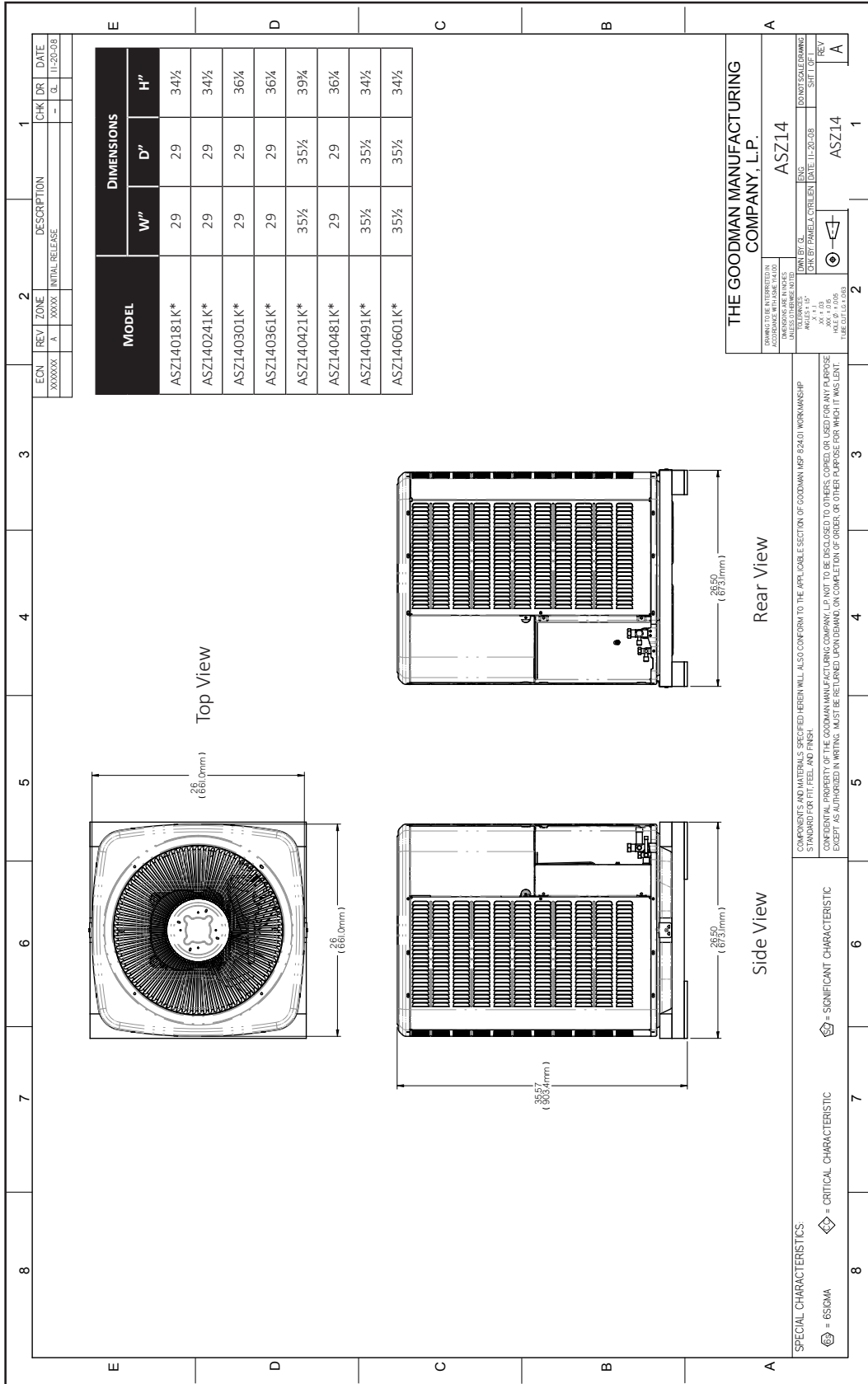
PERFORMANCE DATA FOR SPLIT SYSTEM

OUTDOOR UNIT: _____	
Cooling Performance	
Total Capacity	_____ MBH
Sensible Capacity	_____ MBH
Outdoor Design TMP	_____ °F DB / WB
Air Temp entering	
Evaporator Coil	_____ °F
Power Input Required	_____ kW
(less blower motor)	
Heating Performance	
Total Heating Capacity	_____ kW
	_____ BTU/h

OUTDOOR UNIT: _____	
Supply Air Blower Performance	
Total Supply Air	_____ CFM
Ext. Static Pressure	_____ IWG
Blower Speed	_____ RPM
Power Output Required	_____ BHP
Motor Ratings	_____ HP
Power Input Required	_____ kW
Electrical Data	
Power Supply	_____
Total Unit Amps	_____
Max Overcurrent Device:	
Fuse _____ Breaker _____	Amps _____

NOTES

CERTIFIED DIMENSIONS



ACCESSORIES

MODEL	DESCRIPTION	ASZ14 018**	ASZ14 024**	ASZ14 030**	ASZ14 036**	ASZ14 038**	ASZ14 042**	ASZ14 048/049**	ASZ14 060**	√
ABK-20	Anchor Bracket Kit *	X	X	X	X	X	X	X	X	
ASC01	Anti-Short Cycle Kit	X	X	X	X	X	X	X	X	
CSR-U-1	Hard-start Kit	X	X	X	X	X	X	X	X	
FSK01A1	Freeze Protection Kit	X	X	X	X	X	X	X	X	
LAKT01A	Low-Ambient Kit	X	X	X	X	X	X	X	X	
OT18-60A2	Outdoor Thermostat	X	X	X	X	X	X	X	X	
OT/EHR18-60	Emergency Heat Relay Kit	X	X	X	X	X	X	X	X	
TX2N4 ³	TXV Kit	X								
TX2N4A ³	TXV Kit	X	X							
TX3N4 ³	TXV Kit			X	X	X				
TX5N4 ³	TXV Kit						X	X	X	

* Contains 20 brackets; four brackets needed to anchor unit to pad

¹ Installed on indoor coil

² Required for heat pump applications where ambient temperatures fall below 0 °F with 50% or higher relative humidity.

³ Condensing units and heat pumps with reciprocating compressors require the use of start-assist components when used in conjunction with an indoor coil using a non-bleed thermal expansion valve refrigerant metering device. The TXV should always be sized based on the tonnage of the outdoor unit.