

## SUBMITTAL DATA FORM

Job Name \_\_\_\_\_

Location \_\_\_\_\_

Purchaser \_\_\_\_\_

Order No. \_\_\_\_\_

Engineer \_\_\_\_\_

Unit No. \_\_\_\_\_

Model No. \_\_\_\_\_

Unit Designation \_\_\_\_\_

Performance Data Certified By:  
 \_\_\_\_\_



### Standard Features

- R-410A chlorine-free refrigerant
- Two-Stage Copeland UltraTech scroll compressor
- High-density foam compressor sound blanket
- ComfortNet™ Communications System compatible
- Expanded ComfortAlert™ diagnostics built in
- Set-up capable with two low-voltage wires to outdoor unit
- Diagnostic indicator lights and storage of six fault codes
- Color-coded terminal strip for non-communicating set-up
- High- and low-pressure switches
- Fully charged for 15' of tubing length
- Factory-installed filter dryer
- Coil and ambient temperature sensors
- Two-speed, quiet condenser fan motor
- Sweat connection service valves with easy access to gauge ports
- AHRI Certified; ETL Listed

### Cabinet Features

- Amana® brand sound control top design
- Wire fan discharge grille
- Steel louver coil guard
- Baked-on powder paint finish
- Rust-resistant coated screws
- Compact footprint
- Top and side maintenance access
- Single-panel access to controls with space provided for field-installed accessories
- When properly anchored, meets 2010 Florida Building Code unit integrity requirements for hurricane-type winds (Anchor bracket kits available.)



\* Complete warranty details available from your local dealer or at [www.amana-hac.com](http://www.amana-hac.com). To receive the Lifetime Unit Replacement Limited Warranty (good for as long as you own your home) and 10-Year Parts Limited Warranty, online registration must be completed within 60 days of installation. Online registration is not required in California or Québec.

**PERFORMANCE DATA FOR SPLIT SYSTEM**

**OUTDOOR UNIT:** \_\_\_\_\_

**Cooling Performance**

Total Capacity \_\_\_\_\_ MBH

Sensible Capacity \_\_\_\_\_ MBH

Outdoor Design TMP \_\_\_\_\_ °F DB / WB

Air Temp entering \_\_\_\_\_

Evaporator Coil \_\_\_\_\_ °F

Power Input Required \_\_\_\_\_ kW  
(less blower motor)

**INDOOR UNIT:** \_\_\_\_\_

**Heating Performance**

Total Heating Capacity \_\_\_\_\_ kW  
\_\_\_\_\_ BTU/h

**Supply Air Blower Performance**

Total Supply Air \_\_\_\_\_ CFM

Ext. Static Pressure \_\_\_\_\_ IWG

Blower Speed \_\_\_\_\_ RPM

Power Output Required \_\_\_\_\_ BHP

Motor Ratings \_\_\_\_\_ HP

Power Input Required \_\_\_\_\_ kW

**Electrical Data**

Power Supply \_\_\_\_\_

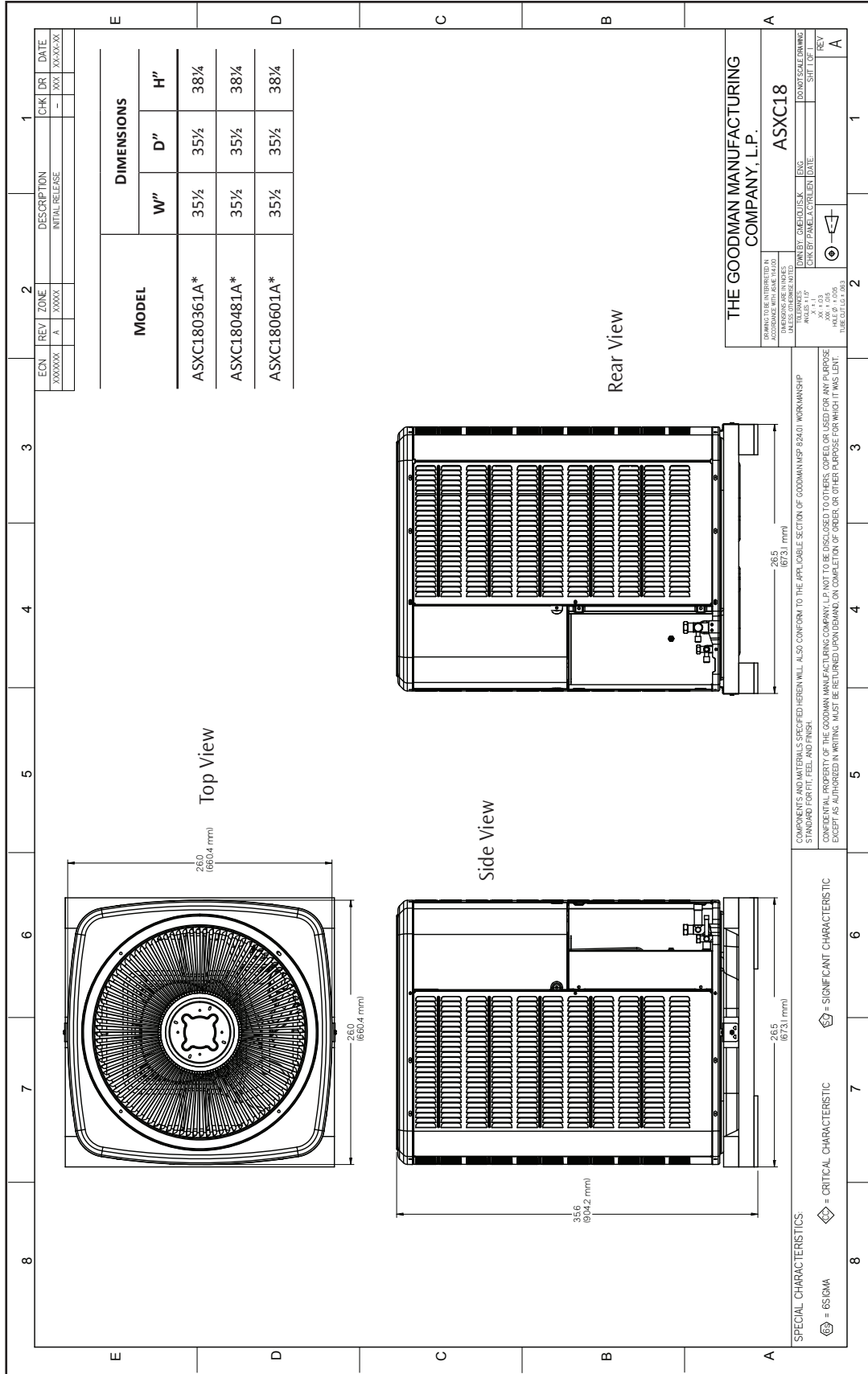
Total Unit Amps \_\_\_\_\_

**Max Overcurrent Device:**

Fuse \_\_\_\_\_ Breaker \_\_\_\_\_ Amps \_\_\_\_\_

**NOTES**

**CERTIFIED DIMENSIONS**



## ACCESSORIES LIST

MODEL	DESCRIPTION	ASXC18 036	ASXC18 048	ASXC18 060	v
ABK-20	Anchor Bracket Kit <sup>0</sup>	X	X	X	
ASC-01	Anti-Short Cycle Kit	X	X	X	
B1141643 <sup>1</sup>	24V Transformer	X	X	X	
CSR-U-1	Hard-start Kit	X	X		
FSK01A <sup>2</sup>	Freeze Protection Kit	X	X	X	
LSK02A	Liquid Line Solenoid Valve	X	X	X	
OT18-60A <sup>3</sup>	Outdoor Thermostat/Lockout Thermostat	X	X	X	
TX3N4	TXV Kit	X			
TX5N4	TXV Kit		X	X	

<sup>0</sup> Contains 20 brackets; four brackets needed to anchor unit to pad

<sup>1</sup> This component is included in the CTK01AA communicating thermostat kit.

<sup>2</sup> Installed on indoor coil

<sup>3</sup> Available in 24V legacy mode only. This feature is integrated in the communicating mode.

Note: Maximum number of installed accessories at the same time is limited by the size of the unit's control box.