

ASXC16
SPLIT SYSTEM AIR CONDITIONERS
UP TO 16 SEER

SUBMITTAL DATA FORM

Job Name _____
 Location _____
 Purchaser _____
 Order No. _____
 Engineer _____
 Unit No. _____
 Model No. _____
 Unit Designation _____
 Performance Data Certified By:



Standard Features

- R-410A chlorine-free refrigerant
- Two-Stage Copeland UltraTech scroll compressor
- High-density foam compressor sound blanket
- ComfortNet™ Communications System compatible
- Expanded ComfortAlert™ diagnostics built in
- Set-up capable with two low-voltage wires to outdoor unit
- Diagnostic indicator lights and storage of six fault codes
- Color-coded terminal strip for non-communicating set-up
- High- and low-pressure switches
- Fully charged for 15' of tubing length
- Factory-installed filter dryer
- Coil and ambient temperature sensors
- Two-speed, quiet condenser fan motor
- Sweat connection service valves with easy access to gauge ports
- AHRI Certified; ETL Listed

Cabinet Features

- Amana® brand sound control top design
- Wire fan discharge grille
- Steel louver coil guard
- Baked-on powder paint finish
- Rust-resistant coated screws
- Compact footprint
- Top and side maintenance access
- Single-panel access to controls with space provided for field-installed accessories
- When properly anchored, meets 2001 Florida Building Code unit integrity requirements for hurricane-type winds (Anchor bracket kits available.)



* Complete warranty details available from your local dealer or at www.amana-hac.com To receive the Lifetime Unit Replacement Limited Warranty (good for as long as you own your home) and 10-Year Parts Limited Warranty, online registration must be completed within 60 days of installation. Online registration is not required in California or Québec.

PERFORMANCE DATA FOR SPLIT SYSTEM

OUTDOOR UNIT: _____

Cooling Performance

Total Capacity _____ MBH
Sensible Capacity _____ MBH
Outdoor Design TMP _____ °F DB / WB
Air Temp entering _____
Evaporator Coil _____ °F
Power Input Required _____ kW
(less blower motor)

INDOOR UNIT: _____

Heating Performance

Total Heating Capacity _____ kW
_____ BTU/h

Supply Air Blower Performance

Total Supply Air _____ CFM
Ext. Static Pressure _____ IWG
Blower Speed _____ RPM
Power Output Required _____ BHP
Motor Ratings _____ HP
Power Input Required _____ kW

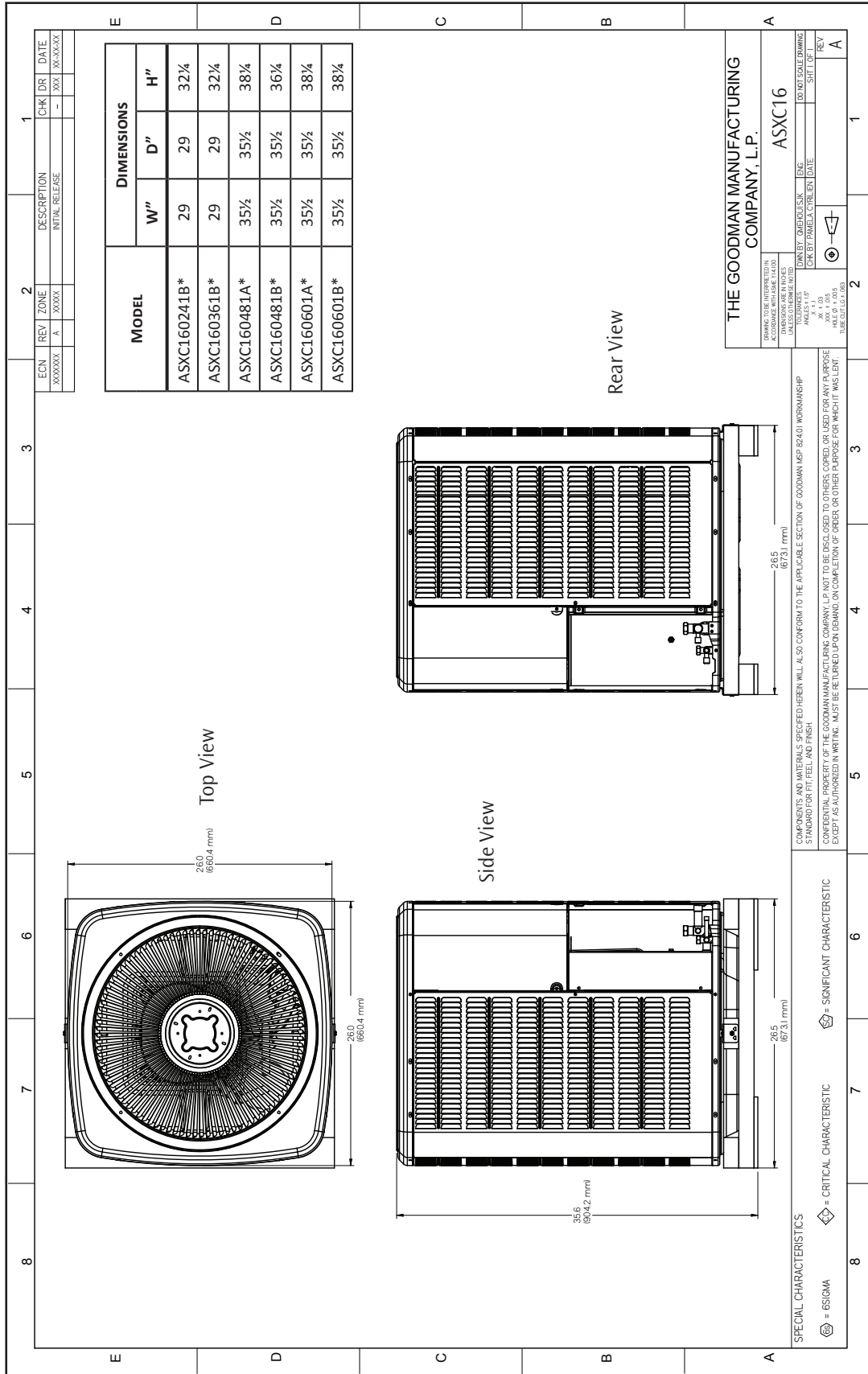
Electrical Data

Power Supply _____
Total Unit Amps _____

Max Overcurrent Device:
Fuse _____ Breaker _____ Amps _____

NOTES

CERTIFIED DIMENSIONS



ACCESSORIES LIST

MODEL	DESCRIPTION	ASXC16 024	ASXC16 036	ASXC16 048	ASXC16 060	v
ABK-20	Anchor Bracket Kit [^]	X	X	X	X	
ASC-01	Anti-Short Cycle Kit	X	X	X	X	
B1141643 ¹	24V Transformer	Maximum number installed at the same time is limited. See table below.	Maximum number installed at the same time is limited. See table below.	X	X	
CSR-U-1	Hard-start Kit					
CSR-U-2	Hard-start Kit			X	X	
CSR-U-3	Hard-start Kit			X	X	
FSK01A ²	Freeze Protection Kit			X	X	
LSK02A	Liquid Line Solenoid Valve			X	X	
OT18-60A ³	Outdoor Thermostat/Lockout Thermostat			X	X	
TX2N4 ⁴	TXV Kit					
TX2N4A ⁴	TXV Kit	X				
TX3N4 ⁴	TXV Kit		X			
TX5N4	TXV Kit			X	X	

- [^] Contains 20 brackets; four brackets needed to anchor unit to pad
- ¹ This component is included in the CTK01AA communicating thermostat kit.
- ² Installed on indoor coil
- ³ Available in 24V legacy mode only. This feature is integrated in the communicating mode.
- ⁴ Field-installed, non-bleed, expansion valve kit — Condensing units and heat pumps with reciprocating compressors require the use of start-assist components when used in conjunction with an indoor coil using a non-bleed thermal expansion valve refrigerant metering device or liquid line solenoid kit The TXV should always be sized based on the tonnage of the outdoor unit.

MODEL	DESCRIPTION	ASXC16 024	ASXC16 024	ASXC16 024	ASXC16 024	ASXC16 024	v
B1141643 ¹	24V Transformer			X		X	
CSR-U-1	Hard-start Kit	X	X	X			
CSR-U-2	Hard-start Kit						
CSR-U-3	Hard-start Kit						
FSK01A ²	Freeze Protection Kit	X	X	X	X	X	
LSK02A	Liquid Line Solenoid Valve	X			X	X	
OT18-60A ³	Outdoor Thermostat/Lockout Thermostat		X		X		

MODEL	DESCRIPTION	ASXC16 036	ASXC16 036	ASXC16 036	ASXC16 036	ASXC16 036	v
B1141643 ¹	24V Transformer					X	
CSR-U-1	Hard-start Kit	X	X				
CSR-U-2	Hard-start Kit			X			
CSR-U-3	Hard-start Kit						
FSK01A ²	Freeze Protection Kit	X	X		X	X	
LSK02A	Liquid Line Solenoid Valve	X			X	X	
OT18-60A ³	Outdoor Thermostat/Lockout Thermostat		X		X		

- ¹ This component is included in the CTK01AA communicating thermostat kit.
- ² Installed on indoor coil
- ³ Available in 24V legacy mode only. This feature is integrated in the communicating mode.

