

SUBMITTAL DATA FORM

Job Name _____

Location _____

Purchaser _____

Order No. _____

Engineer _____

Unit No. _____

Model No. _____

Unit Designation _____

Performance Data Certified By:



Standard Features

- R-410A chlorine-free refrigerant
- High-efficiency Copeland[®] scroll compressor
- High-density foam compressor sound blanket
- Copeland CoreSense diagnostics
- Fully charged for 15' of tubing length
- Factory-installed filter drier
- Factory-installed high and low pressure switches
- Copper tube/ enhanced aluminum fin coil
- Sweat connection service valves with easy access to gauge ports
- AHRI Certified; ETL Listed

Cabinet Features

- Amana[®] brand sound control top design
- Wire fan discharge grille
- Steel louver coil guard
- Baked-on powder-paint finish
- Rust-resistant coated screws
- Compact footprint
- Top and side maintenance access
- Single-panel access to controls with space provided for field-installed accessories
- When properly anchored, meets the 2010 Florida Building Code unit integrity requirements for hurricane-type winds (Anchor bracket kits available.)



* Complete warranty details available from your local dealer or at www.amana-hac.com. To receive the Lifetime Unit Replacement Limited Warranty (good for as long as you own your home) and 10-Year Parts Limited Warranty, online registration must be completed within 60 days of installation. Online registration is not required in California or Québec.

PERFORMANCE DATA FOR SPLIT SYSTEM

OUTDOOR UNIT: _____

Cooling Performance

Total Capacity _____ MBH
 Sensible Capacity _____ MBH
 Outdoor Design TMP _____ °F DB / WB
 Air Temp entering _____
 Evaporator Coil _____ °F
 Power Input Required _____ kW
 (less blower motor)

INDOOR UNIT: _____

Heating Performance

Total Heating Capacity _____ kW
 _____ BTU/h

Supply Air Blower Performance

Total Supply Air _____ CFM
 Ext. Static Pressure _____ IWG
 Blower Speed _____ RPM
 Power Output Required _____ BHP
 Motor Ratings _____ HP
 Power Input Required _____ kW

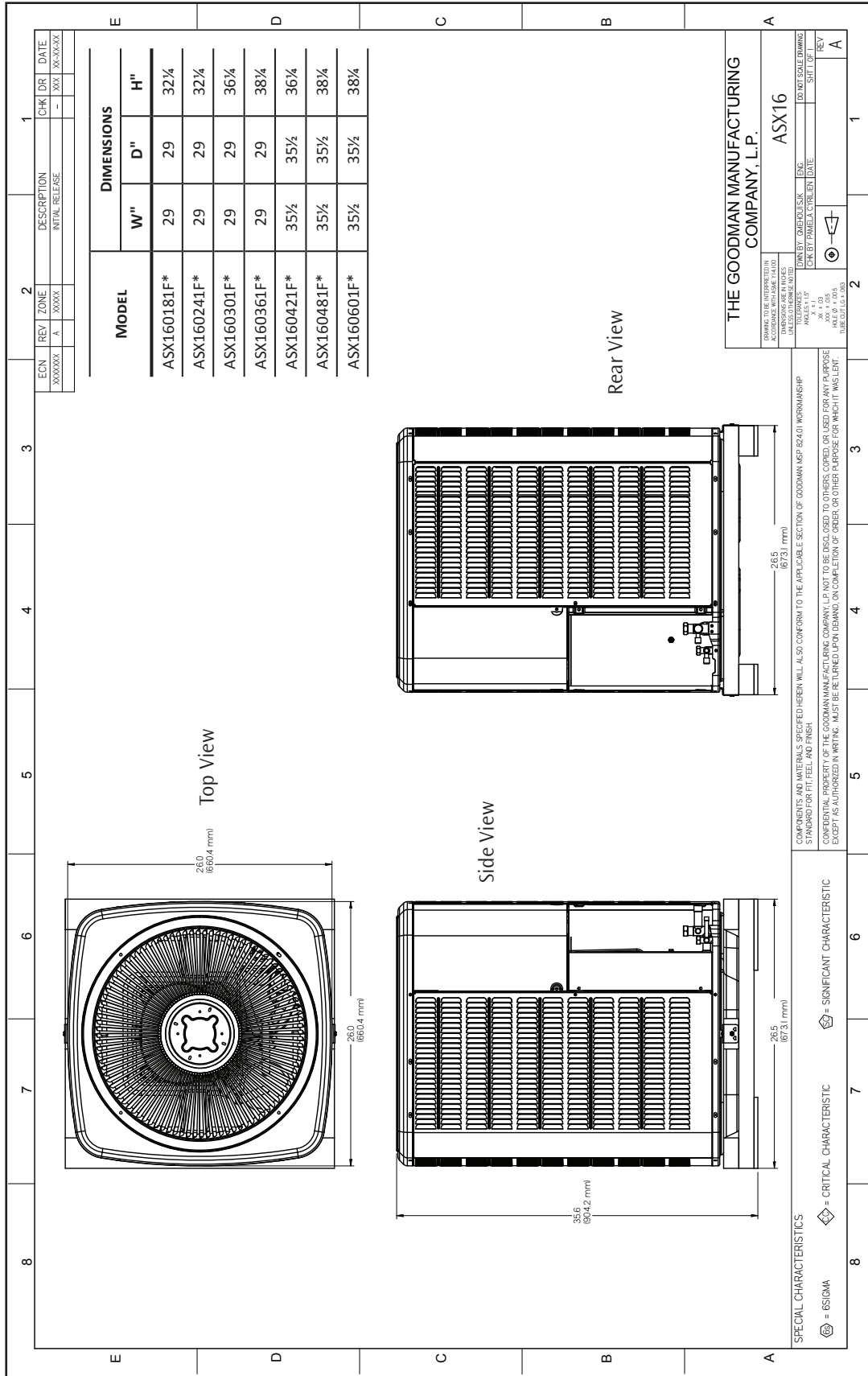
Electrical Data

Power Supply _____
 Total Unit Amps _____

Max Overcurrent Device:
 Fuse _____ Breaker _____ Amps _____

NOTES

CERTIFIED DIMENSIONS



ACCESSORIES LIST

| MODEL | DESCRIPTION | GSX16 018F* | GSX16 024F* | GSX16 030F* | GSX16 036F* | GSX16 042F* | GSX16 048F* | GSX16 060F* | v |
|---------------------|--------------------------|----------------|----------------|----------------|----------------|----------------|----------------|----------------|---|
| ABK-20 | Anchor Bracket Kit ^ | | X | X | X | X | X | X | |
| ABK-21 | Anchor Bracket Kit ^ | X | | | | | | | |
| ASC-01 | Anti-Short Cycle Kit | X | X | X | X | X | X | X | |
| CSR-U-1 | Hard-start Kit | X | X | X | X | X | X | X | |
| FSK01A ¹ | Freeze Protection Kit | X | X | X | X | X | X | X | |
| LSK02A ² | Liquid Line Solenoid Kit | X | X | X | X | X | X | X | |
| TXV-30 ² | TXV Kit | X | X | X | | | | | |
| TXV-42 ² | TXV Kit | | | | X | X | | | |
| TXV-48 ² | TXV Kit | | | | | | X | | |
| TXV-60 ² | TXV Kit | | | | | | | X | |

[^] Contains 20 brackets; four brackets needed to anchor unit to pad

¹ Installed on indoor coil

² Field-installed, non-bleed, expansion valve kit — Condensing units and heat pumps with reciprocating compressors require the use of start-assist components when used in conjunction with an indoor coil using a non-bleed thermal expansion valve refrigerant metering device or liquid line solenoid kit.