

## SUBMITTAL DATA FORM

Job Name \_\_\_\_\_

Location \_\_\_\_\_

Purchaser \_\_\_\_\_

Order No. \_\_\_\_\_

Engineer \_\_\_\_\_

Unit No. \_\_\_\_\_

Model No. \_\_\_\_\_

Unit Designation \_\_\_\_\_

Performance Data Certified By: \_\_\_\_\_



### Standard Features

- Energy-efficient scroll compressor
- High-density foam compressor sound blanket
- Copeland® ComfortAlert™ diagnostics
- Factory-installed filter drier
- Copper tube / enhanced aluminum fin coil
- Sweat connection service valves with easy access to gauge ports
- AHRI Certified; ETL Listed

### Cabinet Features

- Amana® brand sound control top design
- Attractive Architectural Gray powder-paint finish with 500-hour salt-spray approval
- Heavy-gauge, galvanized-steel cabinet with rust-resistant screws
- Wire fan discharge grille
- Steel louver coil guard
- Compact footprint
- Top and side maintenance access
- Single-panel access to controls with space provided for field-installed accessories
- When properly anchored, meets the 2010 Florida Building Code unit integrity requirements for hurricane-type winds (Anchor bracket kits available.)



\* Complete warranty details available from your local dealer or at [www.amana-hac.com](http://www.amana-hac.com). To receive the 10-Year Parts Limited Warranty, online registration must be completed within 60 days of installation. Online registration is not required in California or Québec.

*PERFORMANCE DATA FOR THE SPLIT SYSTEM*

**OUTDOOR UNIT:** \_\_\_\_\_

**Cooling Performance**

Total Capacity \_\_\_\_\_ MBH

Sensible Capacity \_\_\_\_\_ MBH

Outdoor Design TMP \_\_\_\_\_ °F DB / WB

Air Temp entering \_\_\_\_\_

Evaporator Coil \_\_\_\_\_ °F

Power Input Required \_\_\_\_\_ kW  
(less blower motor)

**INDOOR UNIT:** \_\_\_\_\_

**Heating Performance**

Total Heating Capacity \_\_\_\_\_ kW  
\_\_\_\_\_ BTU/h

**Supply Air Blower Performance**

Total Supply Air \_\_\_\_\_ CFM

Ext. Static Pressure \_\_\_\_\_ IWG

Blower Speed \_\_\_\_\_ RPM

Power Output Required \_\_\_\_\_ BHP

Motor Ratings \_\_\_\_\_ HP

Power Input Required \_\_\_\_\_ kW

**Electrical Data**

Power Supply \_\_\_\_\_

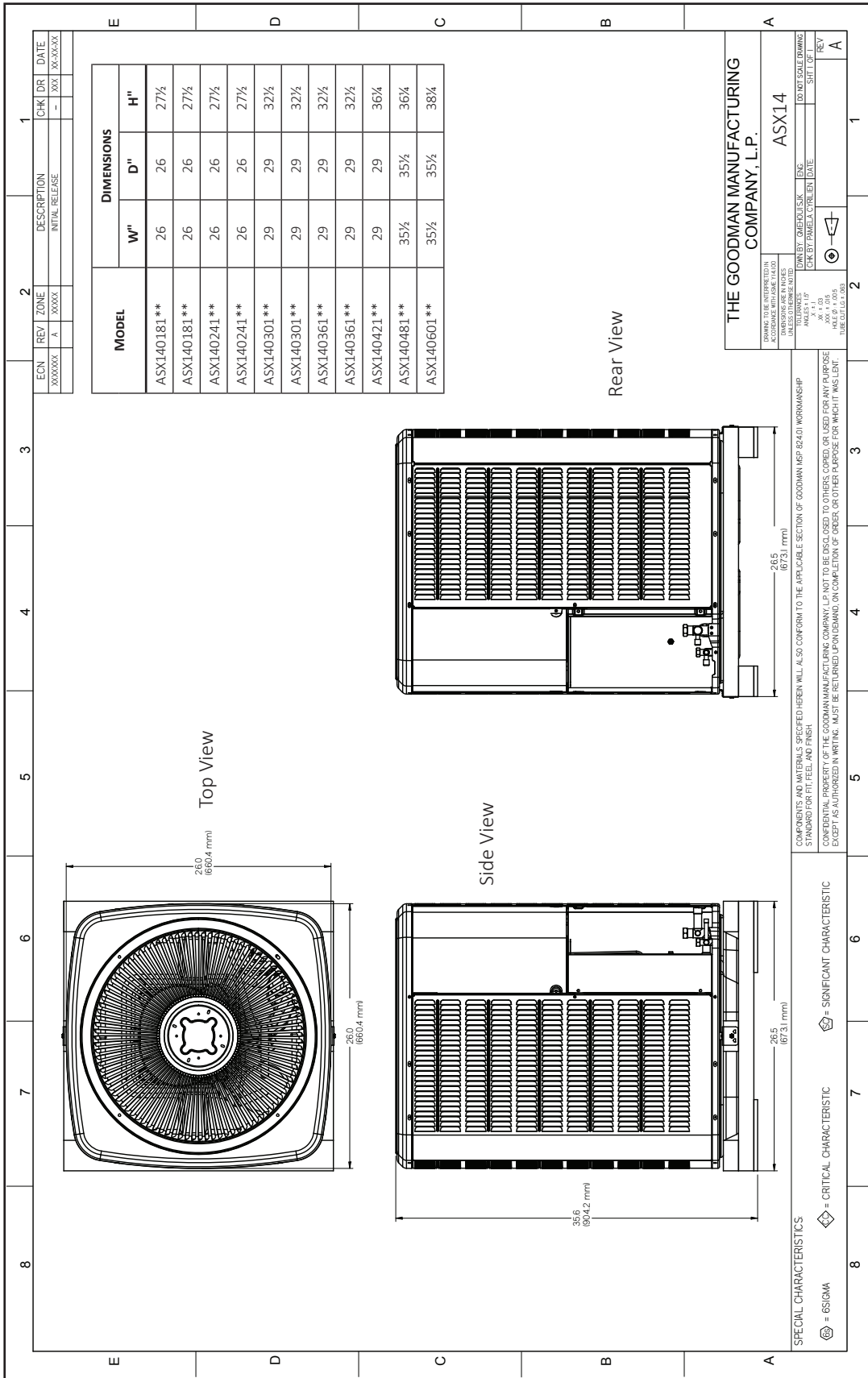
Total Unit Amps \_\_\_\_\_

**Max Overcurrent Device:**

Fuse \_\_\_\_\_ Breaker \_\_\_\_\_ Amps \_\_\_\_\_

*NOTES*

CERTIFIED DIMENSIONS



**ACCESSORIES**

Model #	Description	ASX14 018/19	ASX14 024/25	ASX14 030/31	ASX14 036/37	ASX14 042	ASX14 048	ASX14 060	√
ABK-20	Anchor Bracket Kit <sup>◊</sup>			X	X	X	X	X	
ABK-21	Anchor Bracket Kit <sup>◊</sup>	X	X						
ASC-01	Anti-Short Cycle Kit	X	X	X	X	X	X	X	
CSR-U-1	Hard-start Kit		X	X	X				
CSR-U-2	Hard-start Kit	X				X	X	X	
CSR-U-3	Hard-start Kit						X	X	
FSK01A <sup>1</sup>	Freeze Protection Kit	X	X	X	X	X	X	X	
LSK02A <sup>2</sup>	Liquid Line Solenoid Kit	X	X	X	X	X	X	X	
TX2N4 <sup>2</sup>	TXV Kit	X							
TX2N4A <sup>2</sup>	TXV Kit	X	X						
TX3N4 <sup>2</sup>	TXV Kit			X	X				
TX5N4 <sup>2</sup>	TXV Kit					X	X	X	

<sup>◊</sup> Contains 20 brackets; four brackets needed to anchor unit to pad

<sup>1</sup> Installed on indoor coil

<sup>2</sup> Field-installed, non-bleed, expansion valve kit — Condensing units and heat pumps with reciprocating compressors require the use of start-assist components when used in conjunction with an indoor coil using a non-bleed thermal expansion valve refrigerant metering device or liquid line solenoid kit. The TXV should always be sized based on the tonnage of the outdoor unit.