

SUBMITTAL DATA FORM

Job Name _____

Location _____

Purchaser _____

Order No. _____

Engineer _____

Unit No. _____

Model No. _____

Unit Designation _____

Performance Data Certified By:



Standard Features

- Energy-efficient Copeland scroll compressor
- R-410A Chlorine-Free Refrigerant
- High-density foam compressor sound blanket
- Copeland ComfortAlert diagnostics
- Loss-of-charge switch
- Factory-installed filter drier
- Two-speed condenser fan motor
- Copper tube/enhanced aluminum fin coil
- Sweat connection service valves with easy access to gauge ports
- 13 SEER performance with flowrater expansion device
- Contactor with lug connection
- Ground lug connection
- AHRI Certified; ETL Listed

Cabinet Features

- Amana[®] brand sound control top design
- Attractive Architectural Gray powder-paint finish with 500-hour salt-spray approval
- Heavy-gauge, galvanized-steel cabinet with rust-resistant screws
- Wire fan discharge grille
- Steel louver coil guard
- Compact footprint
- Top and side maintenance access
- Single-panel access to controls with space provided for field-installed accessories
- When properly anchored, meets the 2010 Florida Building Code unit integrity requirements for hurricane-type winds (Anchor bracket kits available.)



* Complete warranty details available from your local dealer or at www.amana-hac.com. To receive the 10-Year Limited Warranty, online registration must be completed within 60 days of installation. Online registration not required in California or Quebec.

PERFORMANCE DATA FOR SPLIT SYSTEM

OUTDOOR UNIT: _____

Cooling Performance

Total Capacity _____ MBH

Sensible Capacity _____ MBH

Outdoor Design TMP _____ °F DB / WB

Air Temp entering _____

Evaporator Coil _____ °F

Power Input Required _____ kW
(less blower motor)

INDOOR UNIT: _____

Heating Performance

Total Heating Capacity _____ kW
_____ BTU/h

Supply Air Blower Performance

Total Supply Air _____ CFM

Ext. Static Pressure _____ IWG

Blower Speed _____ RPM

Power Output Required _____ BHP

Motor Ratings _____ HP

Power Input Required _____ kW

Electrical Data

Power Supply _____

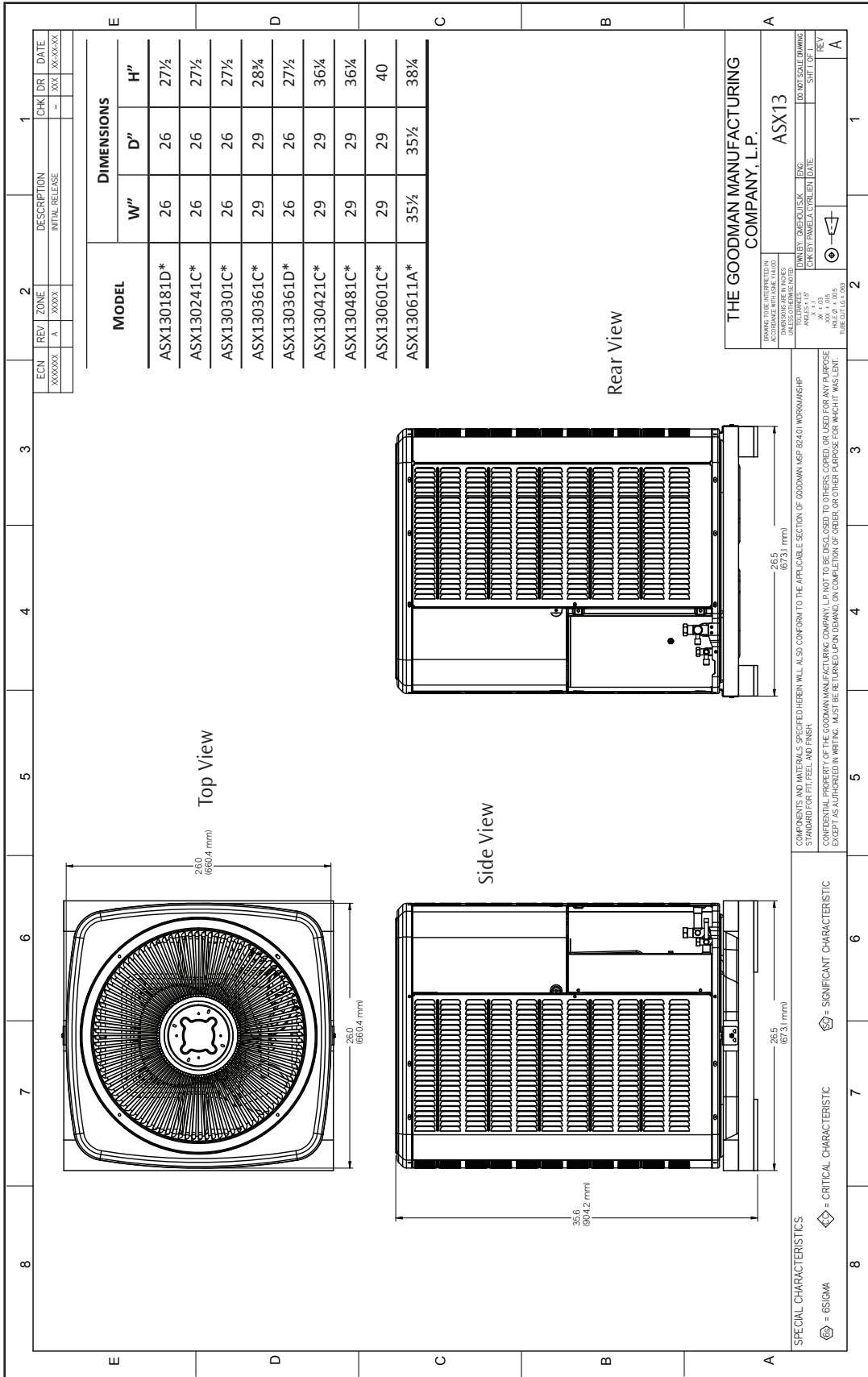
Total Unit Amps _____

Max Overcurrent Device:

Fuse _____ Breaker _____ Amps _____

NOTES

CERTIFIED DIMENSIONS



ACCESSORIES LIST

MODEL	DESCRIPTION	ASX13 018*	ASX13 024*	ASX13 030*	ASX13 036*	ASX13 042*	ASX13 048*	ASX13 060*	v
ABK-20	Anchor Bracket Kit ⁰	X	X	X	X	X	X	X	
ASC-01	Anti-Short Cycle Kit	X	X	X	X	X	X	X	
CSR-U-1	Hard-start Kit	X	X	X	X	X	X	X	
FSK01A ¹	Freeze Protection Kit	X	X	X	X	X	X	X	
LAKT01A	Low-Ambient Kit	X	X	X	X	X	X	X	
LSK01A	Liquid Line Solenoid Kit	X	X	X	X	X	X	X	
OT18-60A	Outdoor Thermostat	X	X	X	X	X	X	X	
TX2N4 ²	TXV Kit	X							
TX2N4A ²	TXV Kit	X	X						
TX3N4 ²	TXV Kit			X	X				
TX5N4 ²	TXV Kit					X	X	X	

⁰ Contains 20 brackets; four brackets needed to anchor unit to pad

¹ Installed on indoor coil

² Field-installed, non-bleed, expansion valve kit — Condensing units and heat pumps with reciprocating compressors require the use of start-assist components when used in conjunction with an indoor coil using a non-bleed thermal expansion valve refrigerant metering device or liquid line solenoid kit. The TXV should always be sized based on the tonnage of the outdoor unit.