

SUBMITTAL DATA FORM

Job Name _____
 Location _____
 Purchaser _____
 Order No. _____
 Engineer _____
 Unit No. _____
 Model No. _____
 Unit Designation _____
 Performance Data Certified By: _____

Standard Features

- Heavy-duty Million-Air[®] stainless-steel dual-diameter, tubular heat exchanger
- Stainless-steel secondary heat exchanger
- ComfortNet[™] Communicating Systems compatible
- Self-calibrating modulating gas valve operates with Comfort-Net communicating two-stage or single-stage thermostats
- Color-coded low-voltage terminals with provisions for electronic air cleaners and humidifiers
- Efficient and quiet variable-speed airflow system gently ramps up or down according to heating or cooling demand
- Durable SureStart[™] Silicon Nitride igniter
- Self-diagnostic control board with constant memory fault code history output to a dual 7-segment display
- Multiple continuous fan speed options offer quiet air circulation
- Auto-Comfort and enhanced dehumidification modes available
- Quiet, variable-speed induced draft blower
- All models comply with California NOx emissions standards
- Meets EnergyStar version 4.0 requirements

Cabinet Features

- Fully insulated heavy-gauge steel cabinet with durable baked-enamel finish
- Cabinet air leakage (QLeak) ≤ 2%
- Foil-faced insulation lines the heat exchanger section
- Designed for upflow or horizontal installation
- Airtight solid bottom for side-return applications and easy-cut tabs for effortless removal in bottom air-inlet applications
- Convenient left or right connection for gas and electric service
- Coil and furnace fit flush for most installations



SureStart
 SILICON NITRIDE IGNITER

MILLION-AIR
 STAINLESS-STEEL
 HEAT EXCHANGER



* Complete warranty details available from your local dealer or at www.amana-hac.com. To receive the Lifetime Unit Replacement Limited Warranty (good for as long as you own your home) and the 10-Year Parts Limited Warranty, online registration must be completed within 60 days of installation. Online registration is not required in California or Québec.

PERFORMANCE DATA FOR SYSTEM

GAS FURNACE: _____

Heating Performance

Input Capacity _____ MBH
 Output Capacity _____ MBH
 Air Temp. Rise _____ °F

Supply Air Blower Performance

Total Supply Air _____ CFM
 Ext. Static Pressure _____ IWG
 Blower Speed _____ RPM
 Power Output Required _____ BHP
 Motor Ratings _____ HP
 Power Input Required _____ kW

Electrical Data

Power Supply _____
 Total Unit Amps _____
 Minimum Wire Size _____ AWG

Max Overcurrent Device:
 Fuse _____ Breaker _____ Amps _____

OUTDOOR UNIT: _____

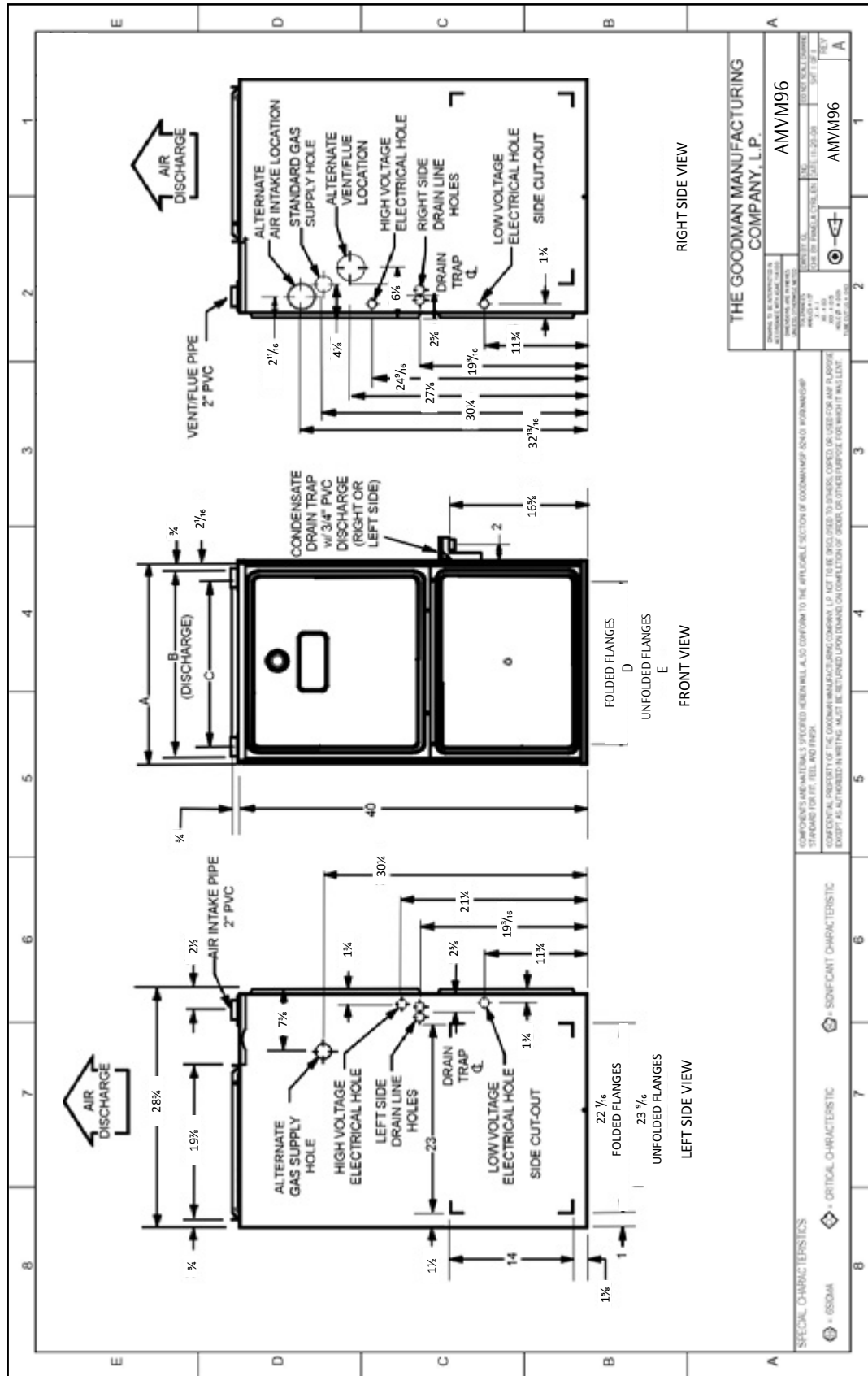
Cooling Performance

Total Capacity _____ MBH
 Sensible Capacity _____ MBH
 Outdoor Design TMP _____ °F DB / WB
 Air Temp entering _____
 Evaporator Coil _____ °F
 Power Input Required _____ kW
 (less blower motor)

NOTES



CERTIFIED DIMENSIONS



THE GOODMAN MANUFACTURING COMPANY, L.P.
 AMVM96
 MODEL NO. AMVM96
 SERIAL NO. 1155DX
 DATE OF MANUFACTURE: 11/15/2018
 DATE OF NEXT INSPECTION: 11/15/2020

COMPONENTS AND MATERIALS SPECIFIED HEREIN WILL ALSO CONFORM TO THE APPLICABLE SECTION OF GOODMAN'S ASHRAE INFORMATION SUPPLEMENT (TRIP, TIE, AND FRISH)
 CONFIDENTIAL PROPERTY OF THE GOODMAN MANUFACTURING COMPANY, L.P. ALL TRADE INFORMATION IS TO BE KEPT CONFIDENTIAL AND NOT REPRODUCED OR TRANSMITTED IN ANY FORM OR BY ANY MEANS, ELECTRONIC OR MECHANICAL, INCLUDING PHOTOCOPYING, RECORDING, OR BY ANY INFORMATION STORAGE AND RETRIEVAL SYSTEM, WITHOUT THE WRITTEN PERMISSION OF GOODMAN MANUFACTURING COMPANY, L.P.

SPECIAL CHARACTERISTICS
 • 650MA • ORITICAL CHARACTERISTIC • SIGNIFICANT CHARACTERISTIC

MODEL	W	D	H	A	B	C	D	E
AMVM960603BX	17 1/2"	28 3/4"	40 3/4"	17 1/2"	16"	13 1/8"	12 1/8"	13 3/8"
AMVM960805CX	21"	28 3/4"	40 3/4"	21"	19 1/2"	16 1/8"	16"	17 1/2"
AMVM961005DX	24 1/2"	28 3/4"	40 3/4"	24 1/2"	23"	20 3/8"	19 3/8"	20 3/8"
AMVM961155DX	24 1/2"	28 3/4"	40 3/4"	24 1/2"	23"	20 3/8"	19 3/8"	20 3/8"

ACCESSORIES

MODEL	DESCRIPTION	AMVM96 0603BX	AMVM96 0805CX	AMVM96 1005DX	AMVM96 1155DX	ACVM96 0604CX	ACVM96 0805DX	√
LPKMOD060UF	LP Conversion Kits	√	---	---	---	---	---	
LPKMOD080UF		---	√	---	---	---	---	
LPKMOD100UF		---	---	√	---	---	---	
LPKMOD115UF		---	---	---	√	---	---	
LPKMOD060CF		---	---	---	---	√	---	
LPKMOD080CF		---	---	---	---	---	√	
EFR01		External Filter Rack	√	√	√	√	√	√
DCVK-20	Horizontal/Vertical Concentric Vent Kit (2")	√	√	√	---	√	---	
DCVK-30	Horizontal/Vertical Concentric Vent Kit (3")	√	√	√	√	√	√	
CFB21	Downflow Floor Base	---	---	---	---	√	---	
CFB24	Downflow Floor Base	---	---	---	---	---	√	
0170K0000S	Flush-mount vent kit	√	√	√	√	√	√	

NOTES

√ Indicates available for this model

- For installation in Canada, gas furnaces are certified only to 4,500'.