

## SUBMITTAL DATA FORM

Job Name \_\_\_\_\_  
 Location \_\_\_\_\_  
 Purchaser \_\_\_\_\_  
 Order No. \_\_\_\_\_  
 Engineer \_\_\_\_\_  
 Unit No. \_\_\_\_\_  
 Model No. \_\_\_\_\_  
 Unit Designation \_\_\_\_\_  
 Performance Data Certified By: \_\_\_\_\_  
 \_\_\_\_\_

### Standard Features

- Heavy-duty MillionAir<sup>®</sup> stainless-steel, dual-diameter tubular heat exchanger
- Stainless-steel secondary heat exchanger
- ComfortNet<sup>™</sup> Communications System compatible
- Two-stage gas valve operates with ComfortNet-communicating two-stage or single-stage thermostats
- Durable SureStart<sup>®</sup> Silicon Nitride igniter
- Color-coded low-voltage terminals with provisions for electronic air cleaner and 115-volt or 24-volt humidifiers
- Efficient and quiet variable-speed ECM airflow system gently ramps up or down according to heating or cooling demand
- Self-diagnostic control board with constant memory fault code history output to a dual 7-segment display
- Multiple continuous fan speed options offer quiet air circulation
- Auto-Comfort and enhanced dehumidification modes available
- Variable-speed induced draft blower
- All models comply with California NOx emissions standards
- Meets EnergyStar version 4.0 requirements

### Cabinet Features

- Fully insulated, heavy-gauge steel cabinet with durable baked-enamel finish
- Cabinet air leakage ( $Q_{Leak}$ )  $\leq 2\%$
- Designed for upflow or horizontal installation
- Airtight solid bottom for side return applications & easy-cut tabs for effortless removal in bottom air inlet applications
- Convenient left or right connection for gas/electric service
- Coil and furnace fit flush for most installations



\* Complete warranty details available from your local dealer or at [www.amana-hac.com](http://www.amana-hac.com). To receive the Lifetime Unit Replacement Limited Warranty (good for as long as you own your home) and the 10-Year Parts Limited Warranty, online registration must be completed within 60 days of installation. Online registration is not required in California or Québec.

### PERFORMANCE DATA FOR SYSTEM

**GAS FURNACE:** \_\_\_\_\_

**Heating Performance**

Input Capacity \_\_\_\_\_ MBH  
 Output Capacity \_\_\_\_\_ MBH  
 Air Temp. Rise \_\_\_\_\_ °F

**Supply Air Blower Performance**

Total Supply Air \_\_\_\_\_ CFM  
 Ext. Static Pressure \_\_\_\_\_ IWG  
 Blower Speed \_\_\_\_\_ RPM  
 Power Output Required \_\_\_\_\_ BHP  
 Motor Ratings \_\_\_\_\_ HP  
 Power Input Required \_\_\_\_\_ kW

**Electrical Data**

Power Supply \_\_\_\_\_  
 Total Unit Amps \_\_\_\_\_  
 Minimum Wire Size \_\_\_\_\_ AWG

**Max Overcurrent Device:**  
 Fuse \_\_\_\_\_ Breaker \_\_\_\_\_ Amps \_\_\_\_\_

**OUTDOOR UNIT:** \_\_\_\_\_

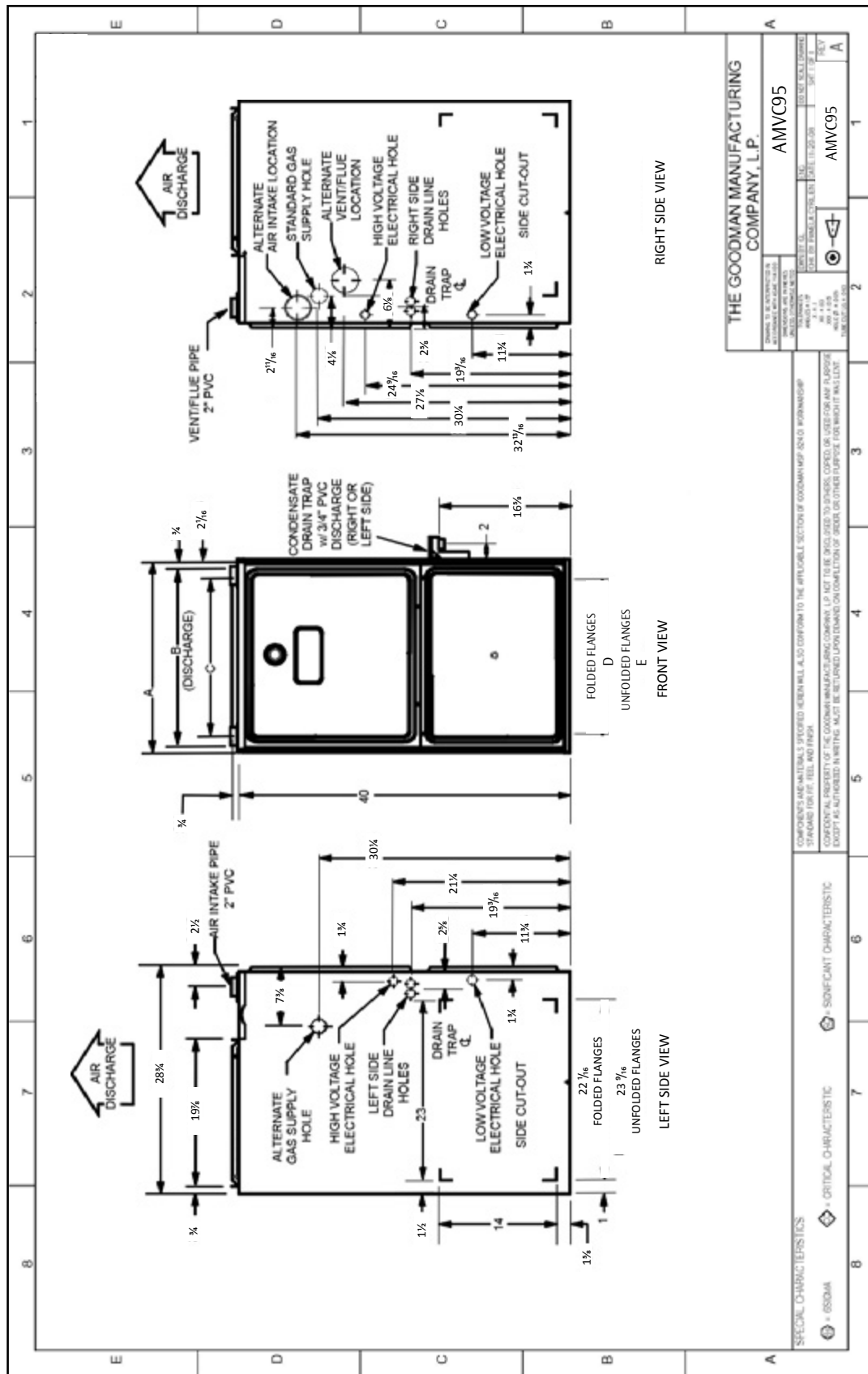
**Cooling Performance**

Total Capacity \_\_\_\_\_ MBH  
 Sensible Capacity \_\_\_\_\_ MBH  
 Outdoor Design TMP \_\_\_\_\_ °F DB / WB  
 Air Temp entering \_\_\_\_\_ °F  
 Evaporator Coil \_\_\_\_\_ °F  
 Power Input Required \_\_\_\_\_ kW  
 (less blower motor)

### NOTES



**CERTIFIED DIMENSIONS**



THE GOODMAN MANUFACTURING COMPANY, L.P.  
 AMVC95  
 MODEL NO. AMVC95  
 SERIAL NO. 1111111111  
 DATE OF MANUFACTURE 11/11/11  
 DATE OF NEXT INSPECTION 11/11/11  
 UNIT NO. 1111111111

COMPONENTS AND MATERIALS SPECIFIED HEREIN WILL ALSO CONFORM TO THE APPLICABLE SECTION OF GOODMAN'S ASHRAE INFORMATION SUPPLEMENT (PART 1, 2, 3, AND 4).  
 CONFIDENTIAL PROPERTY OF THE GOODMAN MANUFACTURING COMPANY, L.P. ALL RIGHTS RESERVED TO GOODMAN. COPIES OR REPRODUCTION FOR ANY PURPOSE EXCEPT AS AUTHORIZED IN WRITING MUST BE REQUESTED UPON WRITING OR TELEPHONE CALL TO THE GOODMAN MANUFACTURING COMPANY, L.P.

MODEL	A	B	C	D	E
AMVC950453BX	17 1/2"	16"	13 3/8"	12 1/2"	13 3/8"
AMVC950704CX	21"	19 1/2"	16 1/8"	16	17 1/2"
AMVC950905CX	21"	19 1/2"	16 1/8"	16	17 1/2"
AMVC950905DX	24 1/2"	19 1/2"	16 1/8"	16	17 1/2"
AMVC951155DX	24 1/2"	23"	20 3/8"	19 3/8"	20 3/8"

## ACCESSORIES

MODEL	DESCRIPTION	AMVC95 0453BX	AMVC95 0704CX	AMVC95 0905C/DX	AMVC95 1155DX	√
LPM-05	LP Conversion Kit (springs & orifice) <sup>1</sup>	1	1	1	1	
LPM-06	LP Conversion Kit (springs & orifice) <sup>2</sup>	1	1	1	1	
ASAS	Electronic Air Cleaners (-10, -11, -12 or -18)	√	√	√	√	
AMU	Media Air Cleaners (1620, 2020, 1625 or 2025)	√	√	√	√	
DEHUM1	Dehumidistat	√	√	√	√	
HAPS28	High-Altitude Pressure Switch Kit	2	2	---	---	
HAPS29	High-Altitude Pressure Switch Kit	---	---	2	2	
HALP11	High-Altitude Propane Gas Kit	2	2	2	2	
HANG 13	High-Altitude Natural Gas Kit	3	3	3	3	
HANG 14	High-Altitude Natural Gas Kit	4	4	4	4	
EFR01	External Filter Rack	√	√	√	√	
DCVK-20	Horizontal/Vertical Concentric Vent Kit (2")	√	√	√	---	
DCVK-30	Horizontal/Vertical Concentric Vent Kit (3")	√	√	√	√	
017K00000S	Flush-mount vent kit	√	√	√	√	

<sup>1</sup> White-Rodgers valve only

<sup>2</sup> White-Rodgers and Honeywell valves

### NOTES

√ Indicates available for this model

2 Indicates 9,001' to 11,000' altitude

1 Indicates 7,001' to 9,000' altitude

3 Indicates 7,001' to 11,000' altitude

- All installations above 7,000' require a pressure switch change.
- For installation in Canada, gas furnaces are certified only to 4,500'.