

SUBMITTAL DATA FORM

Job Name _____

Location _____

Purchaser _____

Order No. _____

Engineer _____

Unit No. _____

Model No. _____

Unit Designation _____

Performance Data Certified By:



Standard Features

- Heavy-duty MillionAir[®] stainless-steel, dual-diameter tubular heat exchanger
- Stainless-steel secondary heat exchanger
- Durable SureStart[®] Silicon Nitride igniter
- Two-stage gas valve with TwinComfort technology allows installer to activate the two-stage valve with the flip of a dipswitch
- Self-adjusting feature automatically adjusts to high- or low-stage operation based on outside temperature without an outdoor temperature sensor
- Color-coded low-voltage terminals with provisions for electronic air cleaner and 24-volt humidifiers
- Control board stores last diagnostic codes in memory and outputs the fault history to a flashing red LED
- Low continuous fan speed options offer quiet air circulation
- All models comply with California NOx emissions standards

Cabinet Features

- Fully insulated, heavy-gauge steel cabinet with durable baked-enamel finish
- Designed for upflow or horizontal installation
- Airtight solid bottom for side return applications and easy-cut tabs for effortless removal in bottom air inlet applications
- Convenient left/right connection for gas/electric service
- Coil and furnace fit flush for most installation

MILLION-AIR
 STAINLESS-STEEL
 HEAT EXCHANGER

SureStart
 SILICON NITRIDE IGNITER



* Complete warranty details available from your local dealer or at www.amana-hac.com. To receive the Lifetime Unit Replacement Limited Warranty (good for as long as you own your home) and 10-Year Parts Limited Warranty, online registration must be completed within 60 days of installation. Online registration is not required in California or Québec.

PERFORMANCE DATA FOR SYSTEM

GAS FURNACE: _____

Heating Performance

Input Capacity _____ MBH
 Output Capacity _____ MBH
 Air Temp. Rise _____ °F

Supply Air Blower Performance

Total Supply Air _____ CFM
 Ext. Static Pressure _____ IWG
 Blower Speed _____ RPM
 Power Output Required _____ BHP
 Motor Ratings _____ HP
 Power Input Required _____ kW

Electrical Data

Power Supply _____
 Total Unit Amps _____
 Minimum Wire Size _____ AWG

Max Overcurrent Device:
 Fuse _____ Breaker _____ Amps _____

OUTDOOR UNIT: _____

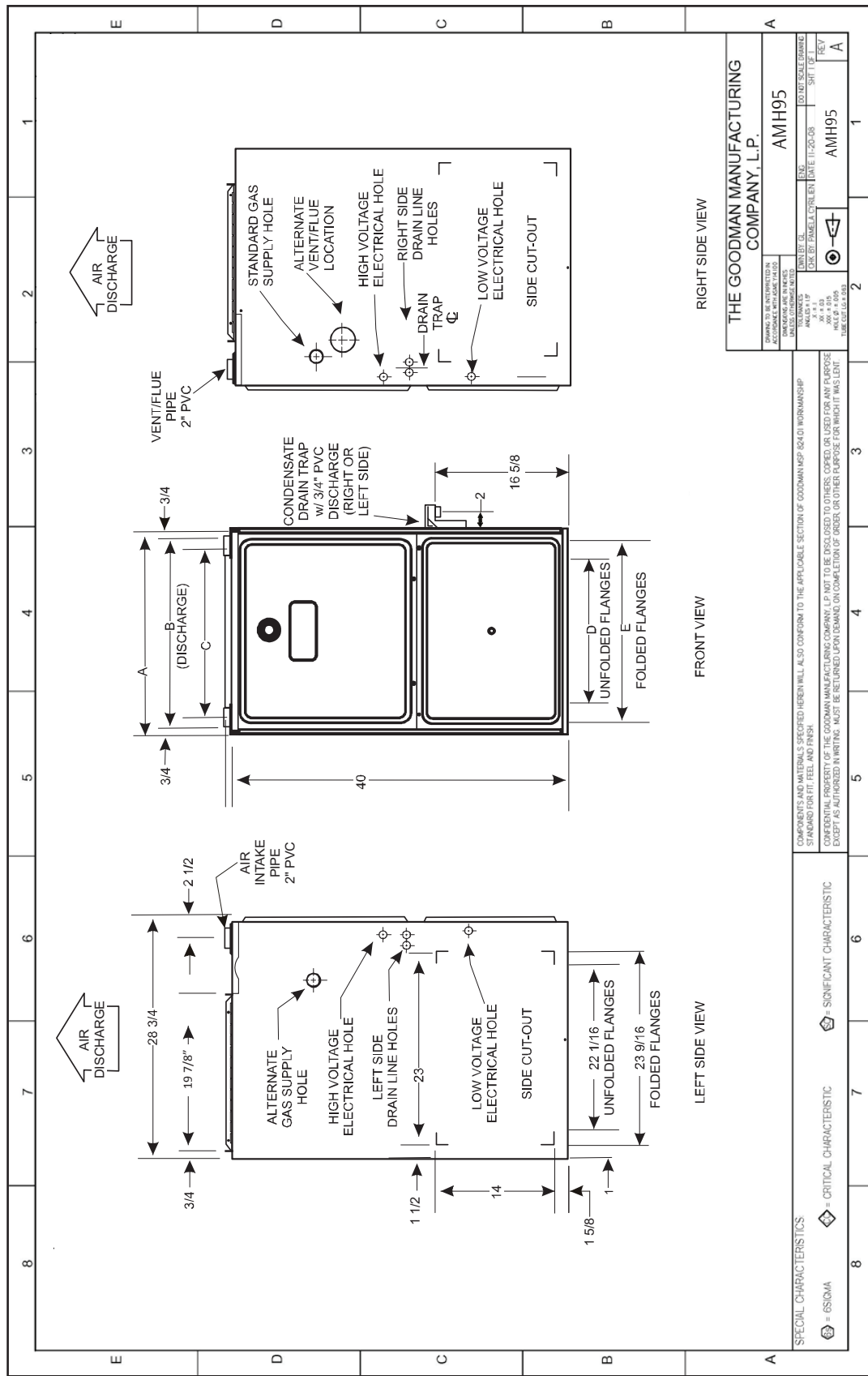
Cooling Performance

Total Capacity _____ MBH
 Sensible Capacity _____ MBH
 Outdoor Design TMP _____ °F DB / WB
 Air Temp entering _____ °F
 Evaporator Coil _____ °F
 Power Input Required _____ kW
 (less blower motor)

NOTES



CERTIFIED DIMENSIONS



MODEL	A	B	C	D	E
AMH950904CXA	21"	19 1/2"	16 1/8"	16"	17 1/2"
AMH950905CXA	21"	19 1/2"	16 1/8"	16"	17 1/2"
AMH951155DXA	24 1/2"	23"	20 3/8"	19 3/8"	20 3/8"

MODEL	A	B	C	D	E
AMH950453BXA	17 1/2"	16"	13 3/8"	12 1/2"	13 3/8"
AMH950703BXA	17 1/2"	16"	13 3/8"	12 1/2"	13 3/8"
AMH950704CXA	21"	19 1/2"	16 1/8"	16"	17 1/2"

ACCESSORIES

MODEL	DESCRIPTION	AMH95 0453B**	AMH95 0703B**	AMH95 0704C**	AMH95 0904C**	AMH95 0905D**	AMH95 1155D**	√
LPM-03B	LP Conversion Kit (Gas Valve)	√	√	√	√	√	√	
LPM-05	LP Conversion Kit (Springs & Orifice)	√	√	√	√	√	√	
LPLP01	LP Gas Low Pressure Kit	√	√	√	√	√	√	
FTK03A	Twinning Kit	√	√	√	√	√	√	
ASAS	Electronic Air Cleaners	√	√	√	√	√	√	
AMU	Media Air Cleaners	√	√	√	√	√	√	
HANG11	High Altitude Natural Gas Kit	1	1	1	1	1	1	
HANG12	High Altitude Natural Gas Kit	2	2	2	2	2	2	
HALP10	High Altitude LP Gas Kit	3	3	3	3	3	3	
HAPS27	High Altitude Pressure Switch Kit	3	3	3	3	3	3	
EFR01	External Filter Rack	√	√	√	√	√	√	
DCVK-20	Horizontal/Vertical Concentric Vent Kit (2")	√	√	---	---	---	---	
DCVK-30	Horizontal/Vertical Concentric Vent Kit (3")	√	√	√	√	√	√	
017K00000S	Flush-mount Vent Kit	√	√	√	√	√	√	

Notes:

√ Indicates available for this model

2 Indicates 9,001' to 11,000' altitude

1 Indicates 7,001' to 9,000' altitude

3 Indicates 7,001' to 11,000' altitude

All installations above 7,000' require a pressure switch change. For installation in Canada, furnaces are certified only to 4,500'.