

## SUBMITTAL DATA FORM

Job Name \_\_\_\_\_  
 Location \_\_\_\_\_  
 Purchaser \_\_\_\_\_  
 Order No. \_\_\_\_\_  
 Engineer \_\_\_\_\_  
 Unit No. \_\_\_\_\_  
 Model No. \_\_\_\_\_  
 Unit Designation \_\_\_\_\_  
 Performance Data Certified By: \_\_\_\_\_

### Standard Features

- MillionAir<sup>®</sup> stainless-steel, dual-diameter tubular heat exchanger
- Two-stage gas valve operates on two-stage or single-stage thermostats
- ComfortNet<sup>™</sup> Communications System compatible
- Efficient and quiet variable-speed ECM circulator motor gently ramps up or down according to heating or cooling demand
- SureStart<sup>®</sup> Silicon Nitride igniter designed for long igniter life
- Furnace control board with self-diagnostics, color-coded low-voltage terminals, and provisions for electronic air cleaner and 120-volt or 24-volt humidifiers
- Low constant fan speed allows homeowner to activate a very low speed to efficiently circulate air throughout the home. This setting costs as little as a 100-watt light bulb to operate.
- Quiet, two-speed induced draft blower
- All models comply with California NOx emissions standards

### Cabinet Features

- Fully insulated, heavy-gauge steel cabinet with durable baked-enamel finish
- Designed for multi-position installation: upflow, horizontal left or right
- Removable bottom for side- or bottom-return applications
- Convenient left or right connection for gas/electric service
- Coil and furnace fit flush for most installations



\* Complete warranty details available from your local dealer or at [www.amana-hac.com](http://www.amana-hac.com). To receive the Lifetime Unit Replacement Limited Warranty (good for as long as you own your home) and the 10-Year Parts Limited Warranty, online registration must be completed within 60 days of installation. Online registration is not required in California or Québec.

### PERFORMANCE DATA FOR SYSTEM

**GAS FURNACE:** \_\_\_\_\_

**Heating Performance**

Input Capacity \_\_\_\_\_ MBH  
 Output Capacity \_\_\_\_\_ MBH  
 Air Temp. Rise \_\_\_\_\_ °F

**Supply Air Blower Performance**

Total Supply Air \_\_\_\_\_ CFM  
 Ext. Static Pressure \_\_\_\_\_ IWG  
 Blower Speed \_\_\_\_\_ RPM  
 Power Output Required \_\_\_\_\_ BHP  
 Motor Ratings \_\_\_\_\_ HP  
 Power Input Required \_\_\_\_\_ kW

**Electrical Data**

Power Supply \_\_\_\_\_  
 Total Unit Amps \_\_\_\_\_  
 Minimum Wire Size \_\_\_\_\_ AWG

**Max Overcurrent Device:**  
 Fuse \_\_\_\_\_ Breaker \_\_\_\_\_ Amps \_\_\_\_\_

**OUTDOOR UNIT:** \_\_\_\_\_

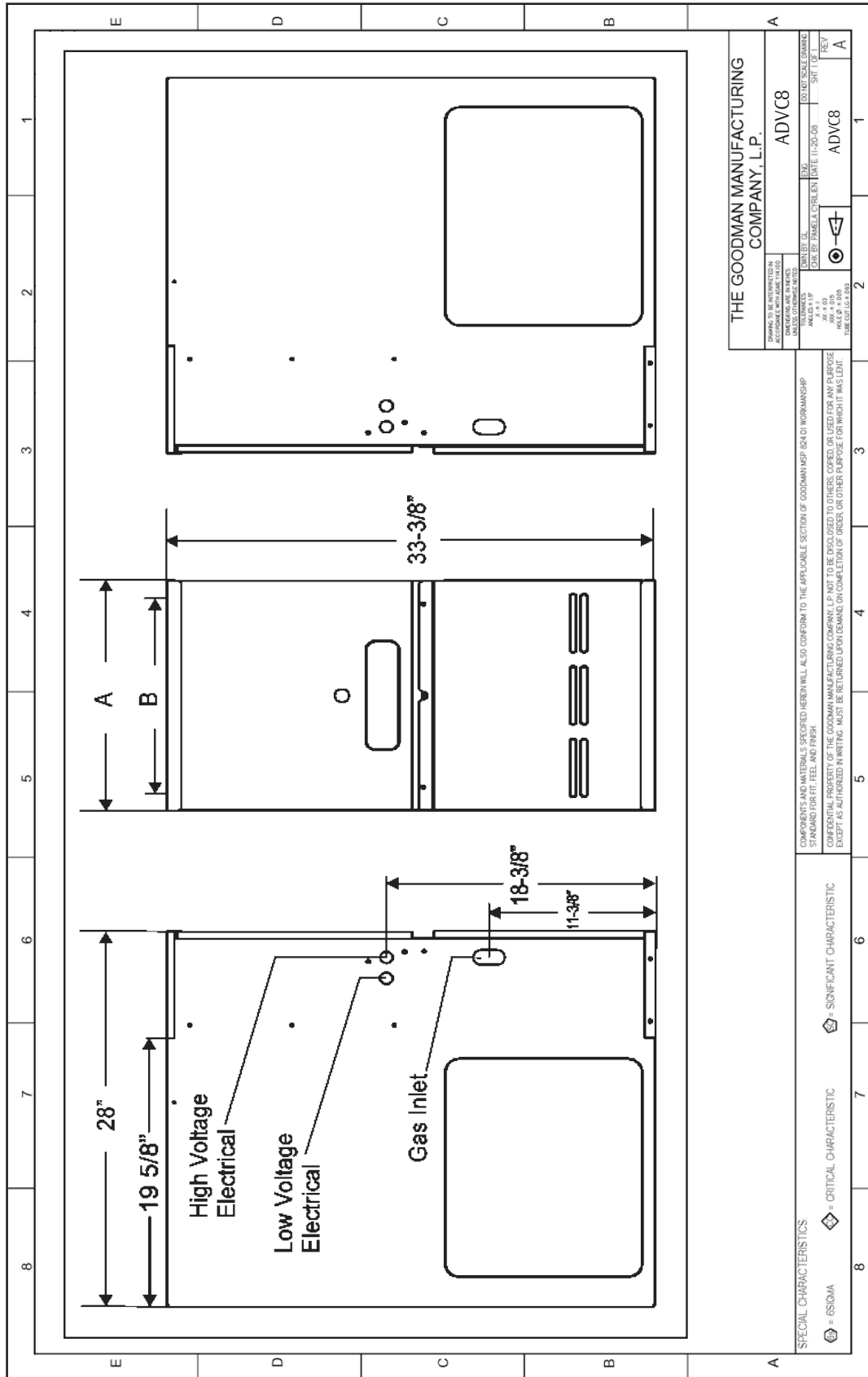
**Cooling Performance**

Total Capacity \_\_\_\_\_ MBH  
 Sensible Capacity \_\_\_\_\_ MBH  
 Outdoor Design TMP \_\_\_\_\_ °F DB / WB  
 Air Temp entering \_\_\_\_\_  
 Evaporator Coil \_\_\_\_\_ °F  
 Power Input Required \_\_\_\_\_ kW  
 (less blower motor)

### NOTES



**CERTIFIED DIMENSIONS**



MODEL	A	B
ADVC80703BX	17 1/2"	16"
ADVC80905CX	21"	19 1/2"
ADVC81155CX	21"	19 1/2"

**ACCESSORIES**

MODEL	DESCRIPTION	ADVC8 0703BX	ADVC8 0905CX	ADVC8 1155CX	√
LPM-05	LP Conversion Kit (Springs & Orifice) <sup>1</sup>	√	√	√	
LPM-06	LP Conversion Kit (Springs & Orifice) <sup>2</sup>	√	√	√	
AFE18-60A	Fossil Fuel Kit (must be used in a dual-fuel application with a compatible thermostat)	√	√	√	
MVK-01 <sup>3</sup>	Masonry Vent Kit	√	√	√	
FSKA-14/17	Noise Reduction Kits	√	√	√	
FSKA-21/24	Noise Reduction Kits	√	√	√	
ASAS	Electronic Air Cleaners (* = -10, -11, -12 or -18)	√	√	√	
AMU	Media Air Cleaners (* = 1620, 2020, 1625 or 2025)	√	√	√	

<sup>1</sup> White-Rodgers valve only

<sup>2</sup> White-Rodgers and Honeywell valves

<sup>3</sup> Upflow applications only