

SUBMITTAL DATA FORM

Job Name _____
 Location _____
 Purchaser _____
 Order No. _____
 Engineer _____
 Unit No. _____
 Model No. _____
 Unit Designation _____
 Performance Data Certified By:

Standard Features

- Heavy-duty Million-Air[®] stainless-steel dual-diameter, tubular heat exchanger
- Stainless-steel secondary heat exchanger
- ComfortNet[™] Communicating Systems compatible
- Self-calibrating modulating gas valve operates with ComfortNet communicating two-stage or single-stage thermostats
- Color-coded low-voltage terminals with provisions for electronic air cleaners and humidifiers
- Efficient and quiet variable-speed airflow system gently ramps up or down according to heating or cooling demand
- Durable SureStart[™] Silicon Nitride igniter
- Self-diagnostic control board with constant memory fault code history output to a dual 7-segment display
- Multiple continuous fan speed options offer quiet air circulation
- Auto-Comfort and enhanced dehumidification modes available
- Variable-speed induced draft blower
- All models comply with California NOx emissions standards
- Meets EnergyStar version 4.0 requirements

Cabinet Features

- Cabinet air leakage (QLeak) ≤ 2%
- Fully insulated heavy-gauge steel cabinet with durable baked-enamel finish
- Foil-faced insulation lines the heat exchanger section
- Designed for downflow or horizontal installation
- Airtight solid bottom for side-return applications and easy-cut tabs for effortless removal in bottom air-inlet applications
- Convenient left or right connection for gas and electric service
- Coil and furnace fit flush for most installations



* Complete warranty details available from your local dealer or at www.amana-hac.com. To receive the Lifetime Unit Replacement Limited Warranty (good for as long as you own your home) and the 10-Year Parts Limited Warranty, online registration must be completed within 60 days of installation. Online registration is not required in California or Québec.

PERFORMANCE DATA FOR SYSTEM

GAS FURNACE: _____

Heating Performance

Input Capacity _____ MBH
 Output Capacity _____ MBH
 Air Temp. Rise _____ °F

Supply Air Blower Performance

Total Supply Air _____ CFM
 Ext. Static Pressure _____ IWG
 Blower Speed _____ RPM
 Power Output Required _____ BHP
 Motor Ratings _____ HP
 Power Input Required _____ kW

Electrical Data

Power Supply _____
 Total Unit Amps _____
 Minimum Wire Size _____ AWG

Max Overcurrent Device:
 Fuse _____ Breaker _____ Amps _____

OUTDOOR UNIT: _____

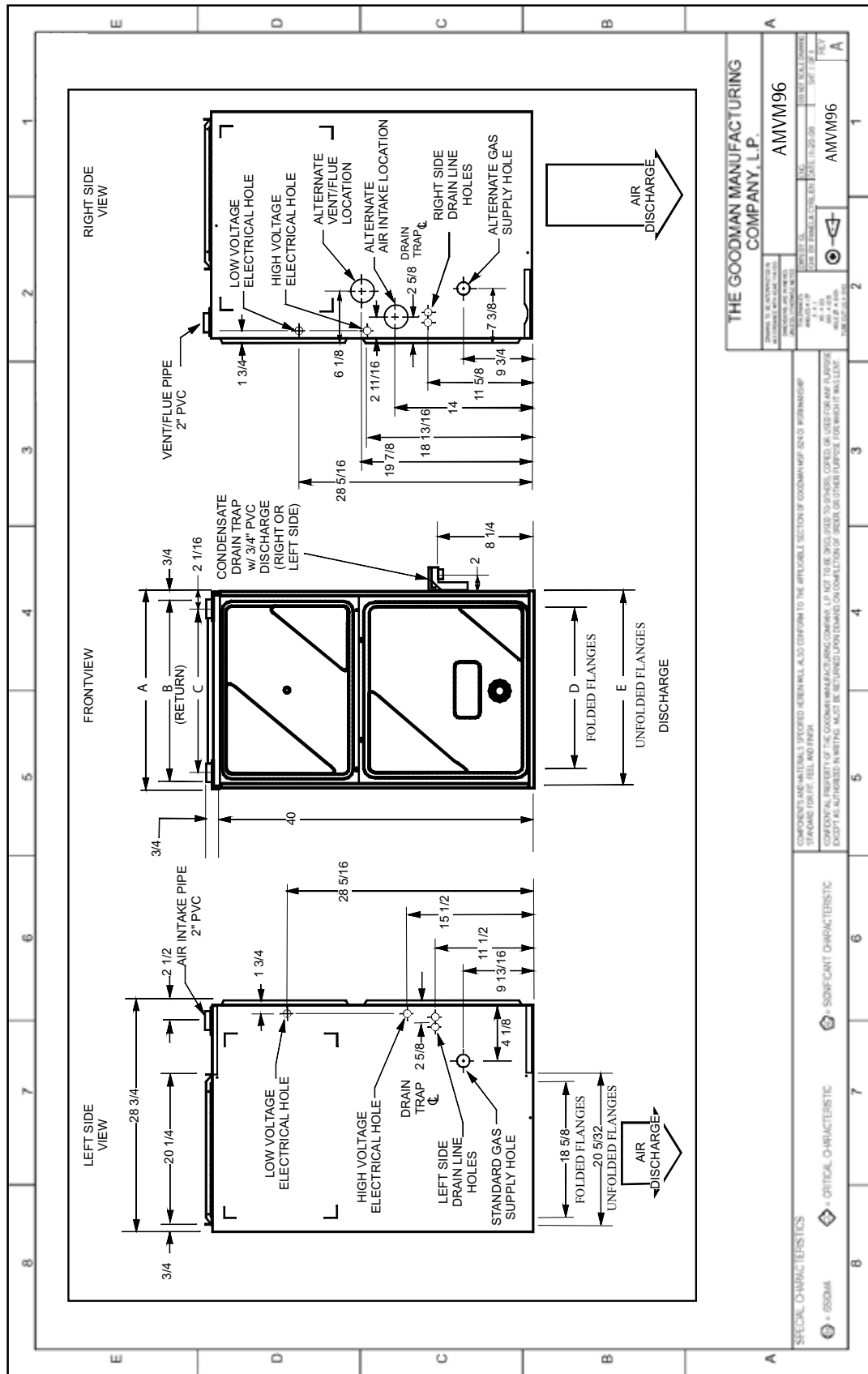
Cooling Performance

Total Capacity _____ MBH
 Sensible Capacity _____ MBH
 Outdoor Design TMP _____ °F DB / WB
 Air Temp entering _____ °F
 Evaporator Coil _____ °F
 Power Input Required _____ kW
 (less blower motor)

NOTES



CERTIFIED DIMENSIONS



THE GOODMAN MANUFACTURING COMPANY, L.P.

MODEL	AMVM96
DATE OF MANUFACTURE	12/11/2018
DATE OF ASSEMBLY	12/11/2018
DATE OF TEST	12/11/2018
DATE OF SHIP	12/11/2018

COMPONENTS AND MATERIALS SPECIFIED HEREIN WILL ALSO CONFORM TO THE APPLICABLE SECTION OF GOODMAN UNIT QUALITY MANAGEMENT SYSTEM (THIS IS NOT A PART OF THE GOODMAN PROPERTY OF THE GOODMAN MANUFACTURING COMPANY, L.P. IF THESE PROVISIONS TO BE APPLIED TO OTHER UNITS OR USED FOR ANY PURPOSES EXCEPT AS AUTHORIZED IN WRITING, SUCH BE THE USER'S RESPONSIBILITY ON COMPLETION OF THESE OR OTHER EQUIPMENT FOR WHICH IT APPLIES.

SPECIAL CHARACTERISTICS	ORITICAL CHARACTERISTIC	NON-CRITICAL CHARACTERISTIC
• 8500MA	• 8500MA	• 8500MA

Model	W	D	H	A	B	C	D	E
ACMV960604CX	21"	28 3/4"	40 3/4"	21"	19 1/2"	16"	18"	19 1/2"
ACMV960805DX	24 1/2"	28 3/4"	40 3/4"	24 1/2"	23"	20"	21 1/2"	23"

ACCESSORIES

MODEL	DESCRIPTION	ACVM96 0604CX	ACVM96 0805DX	√
LPKM0D060CF	LP Conversion Kit	√	---	
LPKM0D080CF	LP Conversion Kit	---	√	
EFR01	External Filter Rack	√	√	
DCVK-20	Horizontal/Vertical Concentric Vent Kit (2")	√	---	
DCVK-30	Horizontal/Vertical Concentric Vent Kit (3")	√	√	
CFB21	Downflow Floor Base	√	---	
CFB24	Downflow Floor Base	---	√	
0170K00000S	Flush-mount vent kit	√	√	

NOTES

- √ Indicates available for this model
- For installation in Canada, gas furnaces are certified only to 4,500'.