

SUBMITTAL DATA FORM

Job Name _____
 Location _____
 Purchaser _____
 Order No. _____
 Engineer _____
 Unit No. _____
 Model No. _____
 Unit Designation _____
 Performance Data Certified By:

Standard Features

- Heavy-duty MillionAir[®] stainless-steel, dual-diameter tubular heat exchanger
- Stainless-steel secondary heat exchanger
- ComfortNet[™] Communications System compatible
- Two-stage gas valve operates with ComfortNet-communicating two-stage or single-stage thermostats
- Durable SureStart[®] Silicon Nitride igniter
- Color-coded low-voltage terminals with provisions for electronic air cleaner and 115-volt or 24-volt humidifiers
- Efficient and quiet variable-speed ECM airflow system that gently ramps up or down according to heating or cooling demand
- Self-diagnostic control board with constant memory fault code history output to a dual 7-segment display
- Multiple continuous fan speed options for quiet air circulation
- Auto-comfort and enhanced dehumidification modes available
- Quiet, variable-speed induced draft blower
- All models comply with California Low NOx emissions standards
- Meets EnergyStar version 4.0 requirements

Cabinet Features

- Cabinet air leakage (Q_{leak}) $\leq 2\%$
- Fully insulated, heavy-gauge steel cabinet with durable baked-enamel finish
- Designed for downflow or horizontal installation
- Airtight solid bottom for side return applications & easy-cut tabs for effortless removal in bottom air inlet applications
- Convenient left or right connection for gas/electric service
- Coil and furnace fit flush for most installations



* Complete warranty details available from your local dealer or at www.amana-hac.com. To receive the Lifetime Unit Replacement Limited Warranty (good for as long as you own your home) and the 10-Year Parts Limited Warranty, online registration must be completed within 60 days of installation. Online registration is not required in California or Québec.

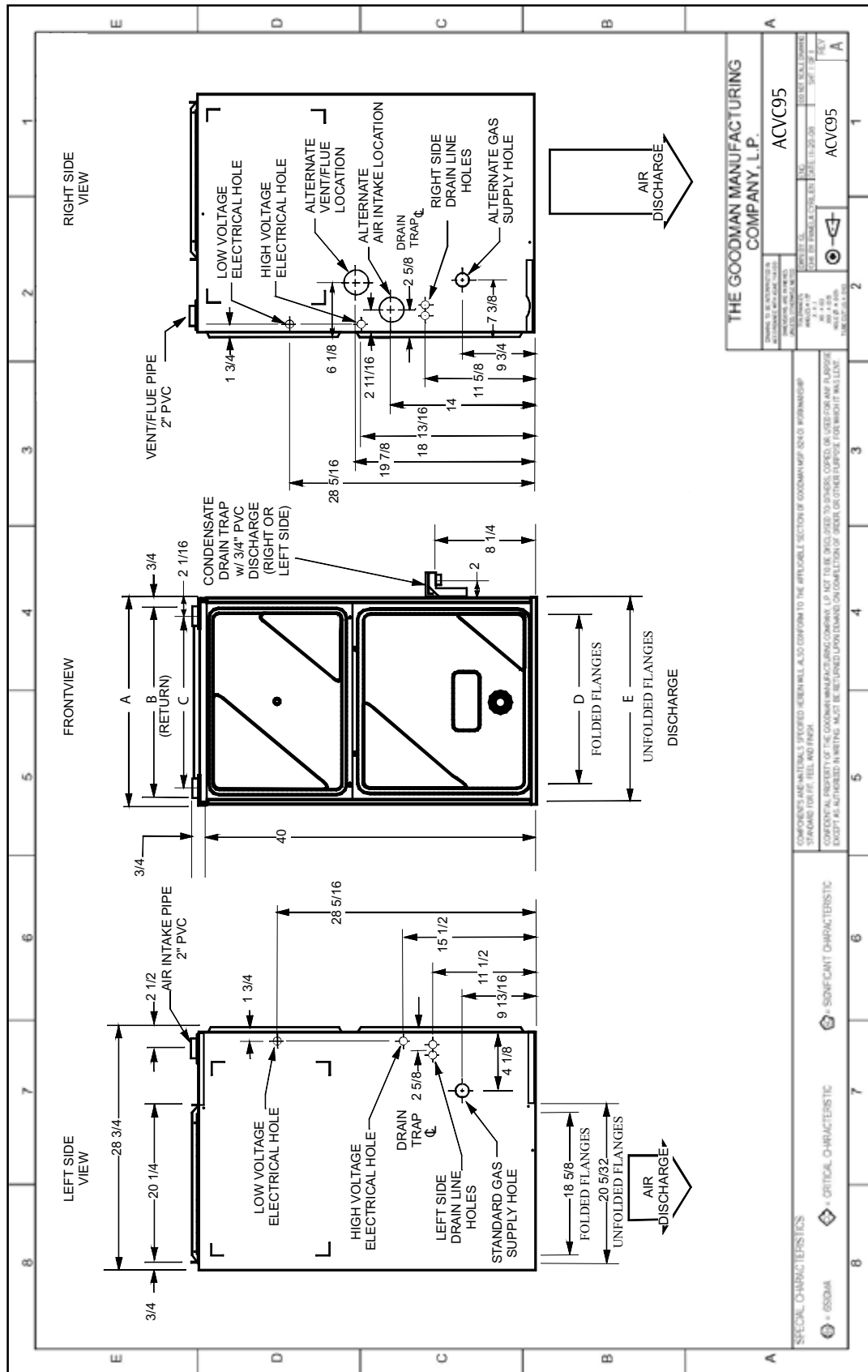
PERFORMANCE DATA FOR SYSTEM

GAS FURNACE: _____	
Heating Performance	
Input Capacity	_____ MBH
Output Capacity	_____ MBH
Air Temp. Rise	_____ °F
Supply Air Blower Performance	
Total Supply Air	_____ CFM
Ext. Static Pressure	_____ IWG
Blower Speed	_____ RPM
Power Output Required	_____ BHP
Motor Ratings	_____ HP
Power Input Required	_____ kW
Electrical Data	
Power Supply	_____
Total Unit Amps	_____
Minimum Wire Size	_____ AWG
Max Overcurrent Device:	
Fuse	_____ Breaker _____ Amps _____

OUTDOOR UNIT: _____	
Cooling Performance	
Total Capacity	_____ MBH
Sensible Capacity	_____ MBH
Outdoor Design TMP	_____ °F DB / WB
Air Temp entering	
Evaporator Coil	_____ °F
Power Input Required (less blower motor)	_____ kW

NOTES

CERTIFIED DIMENSIONS



THE GOODMAN MANUFACTURING COMPANY, L.P.

ACVC95

ACVC95

COMPONENTS AND MATERIALS SPECIFIED HEREIN WILL ALSO CONFORM TO THE APPLICABLE SECTION OF GOODMAN'S QUALITY MANAGEMENT SYSTEM (THIS IS NOT A PART OF THIS SPECIFICATION)

COMPONENTS AND MATERIALS SPECIFIED HEREIN WILL ALSO CONFORM TO THE APPLICABLE SECTION OF GOODMAN'S QUALITY MANAGEMENT SYSTEM (THIS IS NOT A PART OF THIS SPECIFICATION)

COMPONENTS AND MATERIALS SPECIFIED HEREIN WILL ALSO CONFORM TO THE APPLICABLE SECTION OF GOODMAN'S QUALITY MANAGEMENT SYSTEM (THIS IS NOT A PART OF THIS SPECIFICATION)

MODEL	A	B	C	D	E
ACVC950714CX	21"	19 1/2"	16 3/8"	18"	19 1/2"
ACVC950915DX	24 1/2"	23"	20 5/8"	21 1/2"	23"

ACCESSORIES

MODEL	DESCRIPTION	ACVC95 0714CX	ACVC95 0915DX	√
LPM-05	LP Conversion Kit (springs & orifice) ¹	1	1	
LPM-06	LP Conversion Kit (springs & orifice) ²	1	1	
ASAS	Electronic Air Cleaners (-10, -11, -12 or -18)	√	√	
AMU	Media Air Cleaners (1620, 2020, 1625 or 2025)	√	√	
DEHUM1	Dehumidistat	√	√	
HAPS 31	High-Altitude Pressure Switch Kit	2	2	
HALP 13	High-Altitude Propane Gas Kit	2	2	
HANG 16	High-Altitude Natural Gas Kit	2	2	
EFR01	External Filter Rack	√	√	
DCVK-20	Horizontal/Vertical Concentric Vent Kit (2")	√	---	
DCVK-30	Horizontal/Vertical Concentric Vent Kit (3")	√	√	
CFB21	Downflow Floor Base	√	---	
CFB24	Downflow Floor Base	---	√	
017K00000S	Flush-mount vent kit	√	√	

¹ White-Rodgers valve only

² White-Rodgers and Honeywell valves

NOTES

√ Indicates available for this model

2 Indicates 9,001' to 11,000' altitude

1 Indicates 7,001' to 9,000' altitude

3 Indicates 7,001' to 11,000' altitude

- All installations above 7,000' require a pressure switch change.
- For installation in Canada, gas furnaces are certified only to 4,500'.