

## SUBMITTAL DATA FORM

Job Name \_\_\_\_\_  
 Location \_\_\_\_\_  
 Purchaser \_\_\_\_\_  
 Order No. \_\_\_\_\_  
 Engineer \_\_\_\_\_  
 Unit No. \_\_\_\_\_  
 Model No. \_\_\_\_\_  
 Unit Designation \_\_\_\_\_  
 Performance Data Certified By:  
 \_\_\_\_\_



### Standard Features

- Heavy-duty stainless-steel tubular heat exchanger
- Stainless-steel secondary heat exchanger
- Single-stage gas valve
- Durable Silicon Nitride igniter
- Quiet single-speed induced draft blower
- Self-diagnostic control board with constant memory fault code history output to a LED
- Color-coded low-voltage terminals with provisions for electronic air cleaner and humidifier
- All models comply with California Low NOx emissions standards

### Cabinet Features

- Designed for multi-position installation — downflow, horizontal left or right
- Certified for direct vent (2-pipe) or non-direct vent (1-pipe)
- Easy-to-install top venting with optional side venting
- Convenient left or right connection for gas and electrical service
- Cabinet air leakage ( $Q_{Leak} \leq 2\%$ )
- Heavy-gauge steel cabinet with durable finish
- Fully insulated heat exchanger and blower section
- Airtight solid bottom or side return with easy-cut tabs for effortless removal in bottom air-inlet applications



\* Complete warranty details available from your local dealer or at [www.amana-hac.com](http://www.amana-hac.com). To receive the Lifetime Heat Exchanger Limited Warranty (good for as long as you own your home), Lifetime Unit Replacement Limited Warranty and the 10-Year Parts Limited Warranty, online registration must be completed within 60 days of installation. Online registration is not required in California or Québec.



**PERFORMANCE DATA FOR SYSTEM**

**GAS FURNACE:** \_\_\_\_\_

**Heating Performance**

Input Capacity \_\_\_\_\_ MBH  
 Output Capacity \_\_\_\_\_ MBH  
 Air Temp. Rise \_\_\_\_\_ °F

**Supply Air Blower Performance**

Total Supply Air \_\_\_\_\_ CFM  
 Ext. Static Pressure \_\_\_\_\_ IWG  
 Blower Speed \_\_\_\_\_ RPM  
 Power Output Required \_\_\_\_\_ BHP  
 Motor Ratings \_\_\_\_\_ HP  
 Power Input Required \_\_\_\_\_ kW

**Electrical Data**

Power Supply \_\_\_\_\_  
 Total Unit Amps \_\_\_\_\_  
 Minimum Wire Size \_\_\_\_\_ AWG

**Max Overcurrent Device:**  
 Fuse \_\_\_\_\_ Breaker \_\_\_\_\_ Amps \_\_\_\_\_

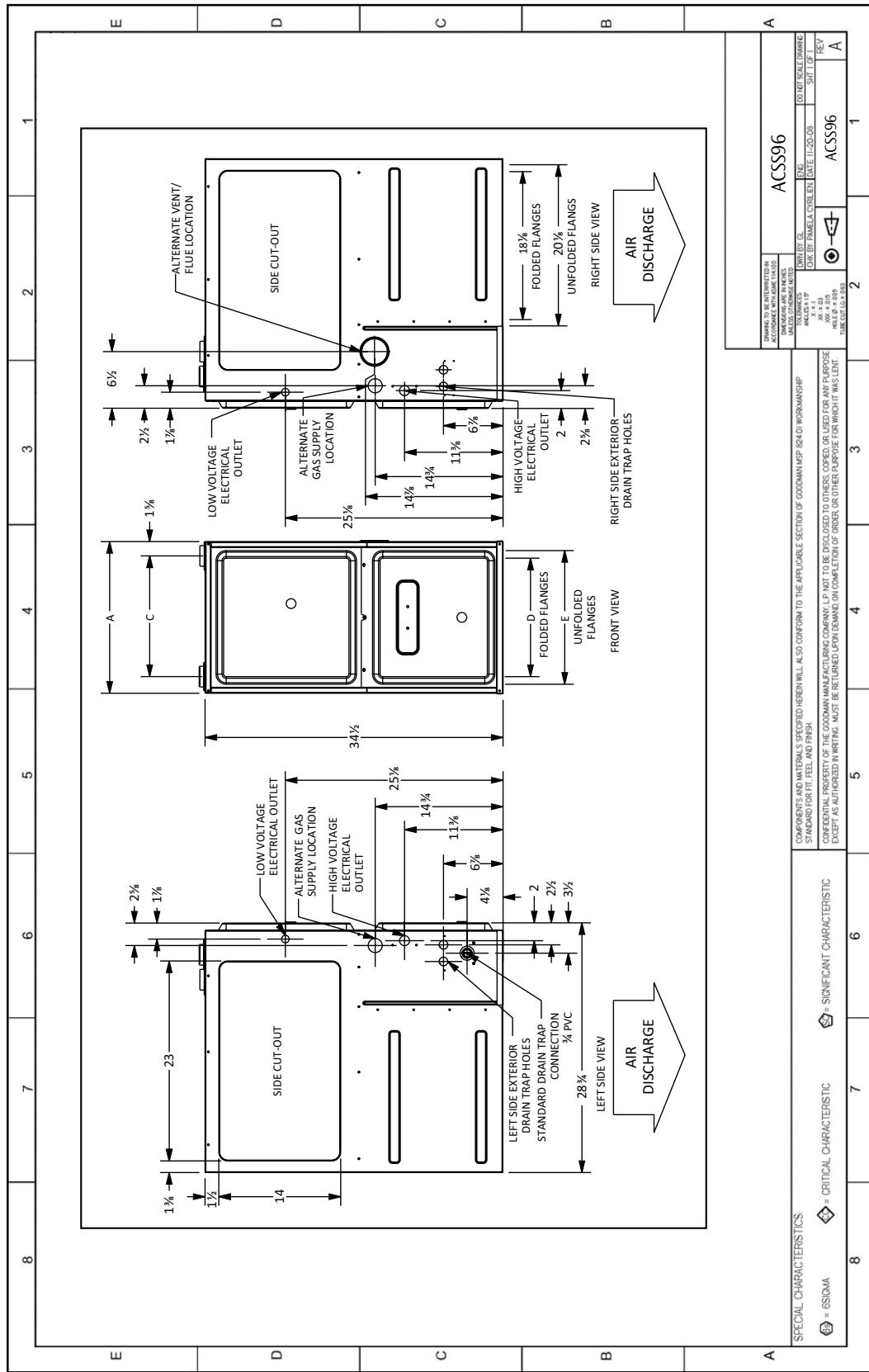
**OUTDOOR UNIT:** \_\_\_\_\_

**Cooling Performance**

Total Capacity \_\_\_\_\_ MBH  
 Sensible Capacity \_\_\_\_\_ MBH  
 Outdoor Design TMP \_\_\_\_\_ °F DB / WB  
 Air Temp entering \_\_\_\_\_ °F  
 Evaporator Coil \_\_\_\_\_ °F  
 Power Input Required \_\_\_\_\_ kW  
 (less blower motor)

**NOTES**

**CERTIFIED DIMENSIONS**



DRAWING TO BE IMPLEMENTED IN DATE: 07/20/2018 DRAWING NUMBER: 11-20-208		ACCS96	
DESIGNED BY: EMMA L. COLEBY	DATE: 11-20-208	REV. 1	REV. 2
ANALYSIS BY: J. J. JONES	DATE: 11-20-208	REV. 3	REV. 4
CHK BY: EMMA L. COLEBY	DATE: 11-20-208	REV. 5	REV. 6
DATE OF NEXT REVISION:	DATE OF NEXT REVISION:	REV. 7	REV. 8

COMPONENTS AND MATERIALS SPECIFIED HEREIN WILL ALSO CONFORM TO THE APPLICABLE SECTION OF GOODMAN HSP 8420 WORKMANSHIP STANDARD FOR FIT, FEEL AND FINISH.  
 COMPENSATIONAL PROPERTY OF THE GOODMAN MANUFACTURING COMPANY. DO NOT BE REPRODUCED TO OTHERS, COPIED, OR USED FOR ANY PURPOSE EXCEPT AS AUTHORIZED IN WRITING. MUST BE RETURNED UPON DEMAND ON COMPLETION OF ORDER OR OTHER PURPOSE FOR WHICH IT WAS LENT.

⊕ = CRITICAL CHARACTERISTIC	⊕ = SIGNIFICANT CHARACTERISTIC
⊕ = 6SIGMA	

MODEL	A	B	C	D	E
ACS960402BNA	17½"	14½"	14"	14½"	16"
ACS960603BNA	17½"	14½"	14"	14½"	16"
ACS960804CNA	21"	18½"	17½"	18"	19½"
ACS961005CNA	21"	18½"	17½"	18"	19½"
ACS961205DNA	24½"	21½"	21"	21½"	23"

**ACCESSORIES**

MODEL	DESCRIPTION	ACSS96 0402BNA	ACSS96 0603BNA	ACSS96 0804CNA	ACSS96 1005CNA	ACSS96 1205DNA	√
CVENT-2	Concentric Vent Kit (2")	√	√	√	√	---	
CVENT-3	Concentric Vent Kit (3")	√	√	√	√	√	
CFSB17	Downflow Sub-Base 17.5"	√	√	---	---	---	
CFSB21	Downflow Sub-Base 21"	---	---	√	√	---	
CFSB24	Downflow Sub-Base 24"	---	---	---	---	√	
RF000142	Drain Kit -Horizontal Left Vertical Flue	---	---	---	---	---	
EFR01	External Filter Rack with 16"x25" Permanent Filter	TBD	TBD	TBD	TBD	TBD	
0170K00000S	Flush Mount Vent Kit - 3" or 2"	√	√	√	√	√	
0170K00001S	Flush Mount Vent Kit - 2"	√	√	√	√	---	
AFE18-60A	Fossil Fuel (Duel Fuel) Kit	√	√	√	√	√	
	High-Altitude Natural Gas Kit	TBD	TBD	TBD	TBD	TBD	
	High-Altitude Pressure Switch	TBD	TBD	TBD	TBD	TBD	
	High-Altitude LP Gas Kit	TBD	TBD	TBD	TBD	TBD	
LPLP03	Low LP Gas Pressure Switch	√	√	√	√	√	
LPM-07	LP Conversion Kits (Gas Valve)	√	√	√	√	√	
FTK04	Twinning Kit	√	√	√	√	√	