



Air Conditioning & Heating

GSX16

HIGH-EFFICIENCY SPLIT SYSTEM AIR CONDITIONER UP TO 16 SEER

SUBMITTAL DATA FORM

Job Name _____

Location _____

Purchaser _____

Order No. _____

Engineer _____

Unit No. _____

Model No. _____

Unit Designation _____

Performance Data Certified By: _____



Standard Features

- R-410A chlorine-free refrigerant
- Energy-efficient compressor
- Factory-installed filter drier
- Fully charged for 15' of tubing length
- Copper tube/aluminum fin coil
- Service valves with sweat connections and easy-to-access gauge ports
- Contactor with lug connection
- Ground lug connection
- AHRI Certified; ETL Listed

Cabinet Features

- Goodman® brand louvered sound control top design
- Steel louver coil guard
- Heavy-gauge galvanized-steel cabinet
- Attractive Architectural Gray powder-paint finish with 500-hour salt-spray approval
- Top and side maintenance access
- Single-panel access to controls with space provided for field-installed accessories
- When properly anchored, meets 2010 Florida Building Code unit integrity requirements for hurricane-type winds (Anchor bracket kits available.)



* Complete warranty details available from your local dealer or at www.goodmanmfg.com. To receive the 10-Year Compressor Limited Warranty and 10-Year Parts Limited Warranty, online registration is required within 60 days of installation. Online registration not required in California or Quebec.

PERFORMANCE DATA FOR SPLIT SYSTEM

OUTDOOR UNIT: _____

Cooling Performance

Total Capacity _____ MBH

Sensible Capacity _____ MBH

Outdoor Design TMP _____ °F DB / WB

Air Temp entering _____

Evaporator Coil _____ °F

Power Input Required _____ kW
(less blower motor)

INDOOR UNIT: _____

Heating Performance

Total Heating Capacity _____ kW
_____ BTU/h

Supply Air Blower Performance

Total Supply Air _____ CFM

Ext. Static Pressure _____ IWG

Blower Speed _____ RPM

Power Output Required _____ BHP

Motor Ratings _____ HP

Power Input Required _____ kW

Electrical Data

Power Supply _____

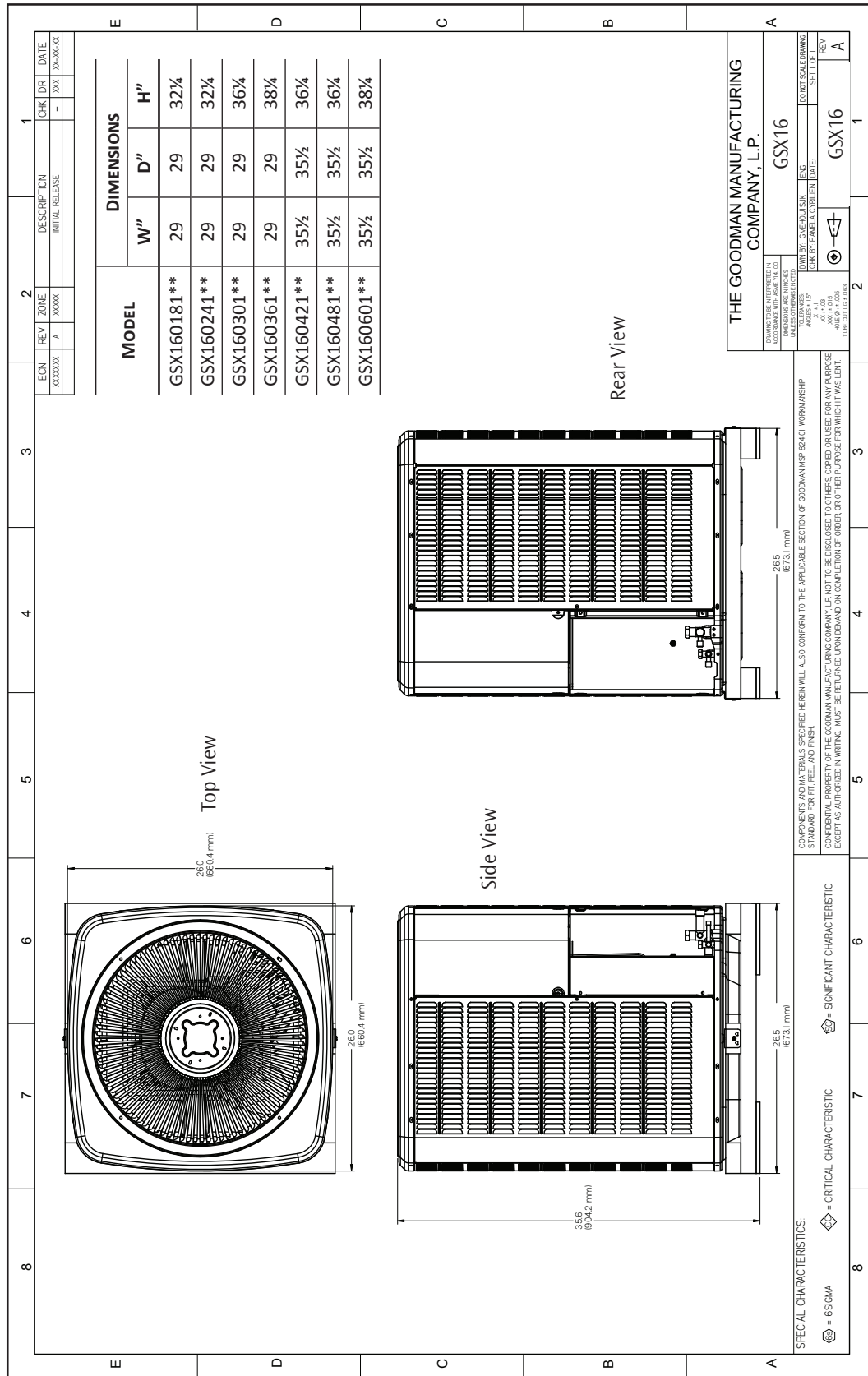
Total Unit Amps _____

Max Overcurrent Device:

Fuse _____ Breaker _____ Amps _____

NOTES

CERTIFIED DIMENSIONS



ACCESSORIES LIST

MODEL	DESCRIPTION	GSX16 018F*	GSX16 024F*	GSX16 030F*	GSX16 036F*	GSX16 042F*	GSX16 048F*	GSX16 060F*	v
ABK-20	Anchor Bracket Kit ^		X	X	X	X	X	X	
ABK-21	Anchor Bracket Kit ^	X							
ASC-01	Anti-Short Cycle Kit	X	X	X	X	X	X	X	
CSR-U-1	Hard-start Kit	X	X	X	X	X	X	X	
FSK01A ¹	Freeze Protection Kit	X	X	X	X	X	X	X	
LSK02A ²	Liquid Line Solenoid Kit	X	X	X	X	X	X	X	
TXV-30 ²	TXV Kit	X	X	X					
TXV-42 ²	TXV Kit				X	X			
TXV-48 ²	TXV Kit						X		
TXV-60 ²	TXV Kit							X	

^ Contains 20 brackets; four brackets needed to anchor unit to pad

¹ Installed on indoor coil

² Field-installed, non-bleed, expansion valve kit — Condensing units and heat pumps with reciprocating compressors require the use of start-assist components when used in conjunction with an indoor coil using a non-bleed thermal expansion valve refrigerant metering device or liquid line solenoid kit.