



Air Conditioning & Heating

GMH8

MULTI-POSITION, DUAL\$AVER MULTI-SPEED GAS FURNACE

SUBMITTAL DATA FORM

Job Name _____

Location _____

Purchaser _____

Order No. _____

Engineer _____

Unit No. _____

Model No. _____

Unit Designation _____

Performance Data Certified By: _____



Standard Features

- Dual-diameter tubular heat exchanger
- Two-stage gas valve Dual\$aver™ technology that allows the installer to activate the two-stage valve with the flip of a dipswitch
- 110V Silicon Nitride igniter
- Quiet four-speed direct-drive circulating blower motor
- Furnace control board with self-diagnostics, color-coded low-voltage terminals and provisions for electronic air cleaner and 24-volt humidifiers
- Control board stores the last five diagnostic codes in memory; simple push-button activation outputs the fault history to a flashing red LED
- Low constant fan allows homeowner to activate the low heat speed to efficiently circulate air throughout the home
- Self-adjusting feature automatically adjusts furnace to high- or low-stage operation based on outside temperature without an outdoor temperature sensor

Cabinet Features

- Fully insulated, heavy-gauge steel cabinet with durable baked-enamel finish
- Foil-faced insulation lines the heat exchanger compartment
- Factory-sealed to achieve 2% or less leakage rate at 1.0" water gauge external duct static pressure
- Designed for multi-position installation: upflow, horizontal left or right
- Removable bottom for side or bottom return applications
- Convenient left or right connection for gas/electric service
- Coil and furnace fit flush for most installations



* Complete warranty details available from your local dealer or at www.goodmanmfg.com. To receive the Lifetime Heat Exchanger Limited Warranty (good for as long as you own your home), 10-Year Unit Replacement Limited Warranty and 10-Year Parts Limited Warranty, online registration must be completed within 60 days of installation. Online registration is not required in California or Québec.

PERFORMANCE DATA FOR SYSTEM

GAS FURNACE: _____

Heating Performance

Input Capacity _____ MBH
 Output Capacity _____ MBH
 Air Temp. Rise _____ °F

Supply Air Blower Performance

Total Supply Air _____ CFM
 Ext. Static Pressure _____ IWG
 Blower Speed _____ RPM
 Power Output Required _____ BHP
 Motor Ratings _____ HP
 Power Input Required _____ kW

Electrical Data

Power Supply _____
 Total Unit Amps _____
 Minimum Wire Size _____ AWG

Max Overcurrent Device:
 Fuse _____ Breaker _____ Amps _____

OUTDOOR UNIT: _____

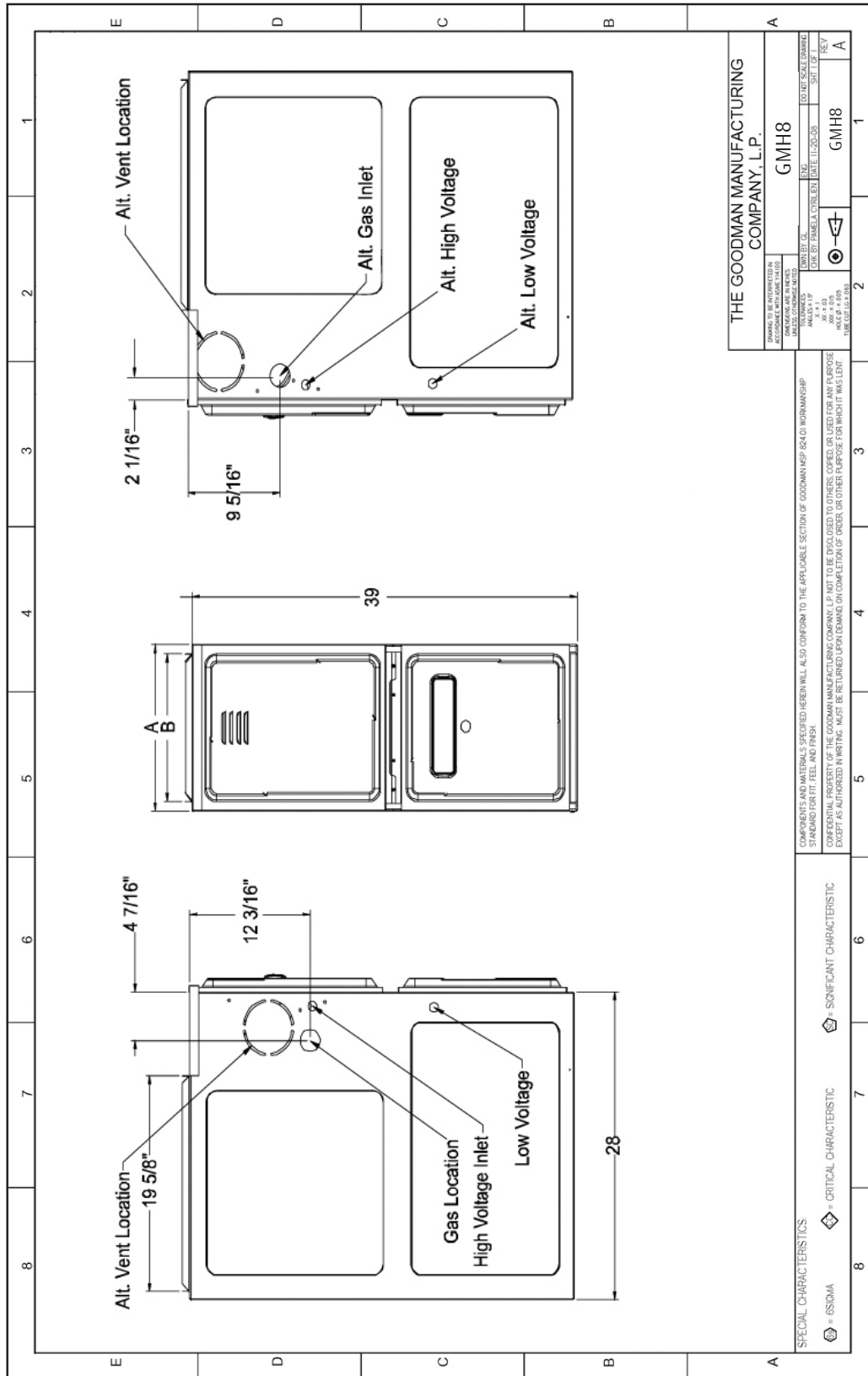
Cooling Performance

Total Capacity _____ MBH
 Sensible Capacity _____ MBH
 Outdoor Design TMP _____ °F DB / WB
 Air Temp entering _____ °F
 Evaporator Coil _____ °F
 Power Input Required _____ kW
 (less blower motor)

NOTES



CERTIFIED DIMENSIONS



THE GOODMAN MANUFACTURING COMPANY, L.P.

DESIGN NO.	GMH8
REV. NO.	
DATE OF CHANGE	
BY	
CHECKED BY	
DATE OF CHECK	
SCALE	AS SHOWN
UNIT	INCHES
PROJ. NO.	
WORK ORDER NO.	
DATE OF ORDER	
BY	
CHECKED BY	
DATE OF CHECK	
SCALE	AS SHOWN
UNIT	INCHES
PROJ. NO.	
WORK ORDER NO.	
DATE OF ORDER	
BY	
CHECKED BY	
DATE OF CHECK	
SCALE	AS SHOWN
UNIT	INCHES

COMPONENTS AND MATERIALS SPECIFIED HEREIN WILL ALSO CONFORM TO THE APPLICABLE SECTION OF GOODMAN'S (SOCIETY) WORKMANSHIP STANDARD PRACTICE, FEEL AND FINISH.

CONFIDENTIAL PROPERTY OF THE GOODMAN MANUFACTURING COMPANY. IT IS NOT TO BE DISCLOSED TO OTHERS, COPIED, OR USED FOR ANY PURPOSES WITHOUT THE WRITTEN PERMISSION OF GOODMAN MANUFACTURING COMPANY. THIS INFORMATION IS INTENDED FOR INTERNAL USE ONLY AND IS NOT TO BE REPRODUCED OR TRANSMITTED IN ANY FORM OR BY ANY MEANS, ELECTRONIC OR MECHANICAL, INCLUDING PHOTOCOPYING, RECORDING, OR BY ANY INFORMATION STORAGE AND RETRIEVAL SYSTEM.

SPECIAL CHARACTERISTICS:

⊕ = BSQMA ⬡ = CRITICAL CHARACTERISTIC ⊕ = SIGNIFICANT CHARACTERISTIC

MODEL	A	B
GMH80804B**	17 1/2"	16"
GMH80805C**	21"	19 1/2"
GMH81005C**	21"	19 1/2"
GMH81205D**	24 1/2"	23"

MODEL	A	B
GMH80403A**	14"	12 1/2"
GMH80603A**	14"	12 1/2"
GMH80604B**	17 1/2"	16"
GMH80803B**	17 1/2"	16"

ACCESSORIES LIST

MODEL	DESCRIPTION	GMH8 0403*	GMH8 0603*	GMH8 0604*	GMH8 0803*	GMH8 0804*	GMH8 0805*	GMH8 1005*	GMH8 1205*	✓
LPM-06	LP Conversion Kit (Springs & Orifice) ¹	✓	✓	✓	✓	✓	✓	✓	✓	
HA02	High-Altitude Natural Gas Kit (+7,000')	✓	✓	✓	✓	✓	✓	✓	✓	
FTK04	Twinning Kit	✓	✓	✓	✓	✓	✓	✓	✓	
FSRKG-14/17	Noise Reduction Kits	✓	✓	✓	✓	✓	✓	✓	✓	
FSRKG-21/24	Noise Reduction Kits	✓	✓	✓	✓	✓	✓	✓	✓	
MVK-01 ²	Masonry Vent Kits	✓	✓	✓	✓	✓	✓	✓	✓	
MVK-02 ²	Masonry Vent Kits								✓	
AFE18-60A	Fossil Fuel Kit	✓	✓	✓	✓	✓	✓	✓	✓	

¹ Honeywell or White-Rodgers valves

² Upflow applications only