



GCVC95

COMFORTNET™-COMPATIBLE

MULTI-POSITION, TWO-STAGE VARIABLE-SPEED GAS FURNACE

SUBMITTAL DATA FORM

Job Name _____

Location _____

Purchaser _____

Order No. _____

Engineer _____

Unit No. _____

Model No. _____

Unit Designation _____

Performance Data Certified By: _____

Standard Features

- Dual-diameter tubular heat exchanger
- Two-stage gas valve operates with two-stage or single-stage thermostats
- ComfortNet™ Communications System compatible
- Efficient and quiet variable-speed ECM circulator motor gently ramps up or down according to heating or cooling demand
- 120V Silicon Nitride igniter designed for long igniter life
- Furnace control board with self-diagnostics, color-coded low-voltage terminals, and provisions for electronic air cleaner and 120-volt or 24-volt humidifiers
- Multiple continuous fan speed options offer quiet air circulation
- Dual-certified for sealed combustion direct vent (2-pipe) or non-direct vent (1-pipe) applications
- Quiet two-speed induced draft blower
- All models comply with California NOx emissions standards
- Meets EnergyStar version 4.0 requirements

Cabinet Features

- Fully insulated, heavy-gauge steel cabinet with durable baked-enamel finish
- Cabinet air leakage (QLeak) ≤ 2%
- Foil-faced insulation lines the heat exchanger
- Easy-to-install top venting is standard; alternate flue/vent connections on some models
- Designed for multi-position installation – downflow, horizontal left or right
- Airtight solid bottom for side return applications and easy-cut tabs for effortless removal in bottom air inlet applications
- Convenient left / right connection for gas/electric service
- Coil and furnace fit flush for most installations



* Complete warranty details available at www.goodmanmfg.com. To receive the Lifetime Heat Exchanger Limited Warranty (good for as long as you own your home) and the 10-year warranty terms, online registration is required within 60 days of installation. Online registration is not required in California or Québec.

PERFORMANCE DATA FOR SYSTEM

GAS FURNACE: _____

Heating Performance

Input Capacity _____ MBH
 Output Capacity _____ MBH
 Air Temp. Rise _____ °F

Supply Air Blower Performance

Total Supply Air _____ CFM
 Ext. Static Pressure _____ IWG
 Blower Speed _____ RPM
 Power Output Required _____ BHP
 Motor Ratings _____ HP
 Power Input Required _____ kW

Electrical Data

Power Supply _____
 Total Unit Amps _____
 Minimum Wire Size _____ AWG

Max Overcurrent Device:
 Fuse _____ Breaker _____ Amps _____

OUTDOOR UNIT: _____

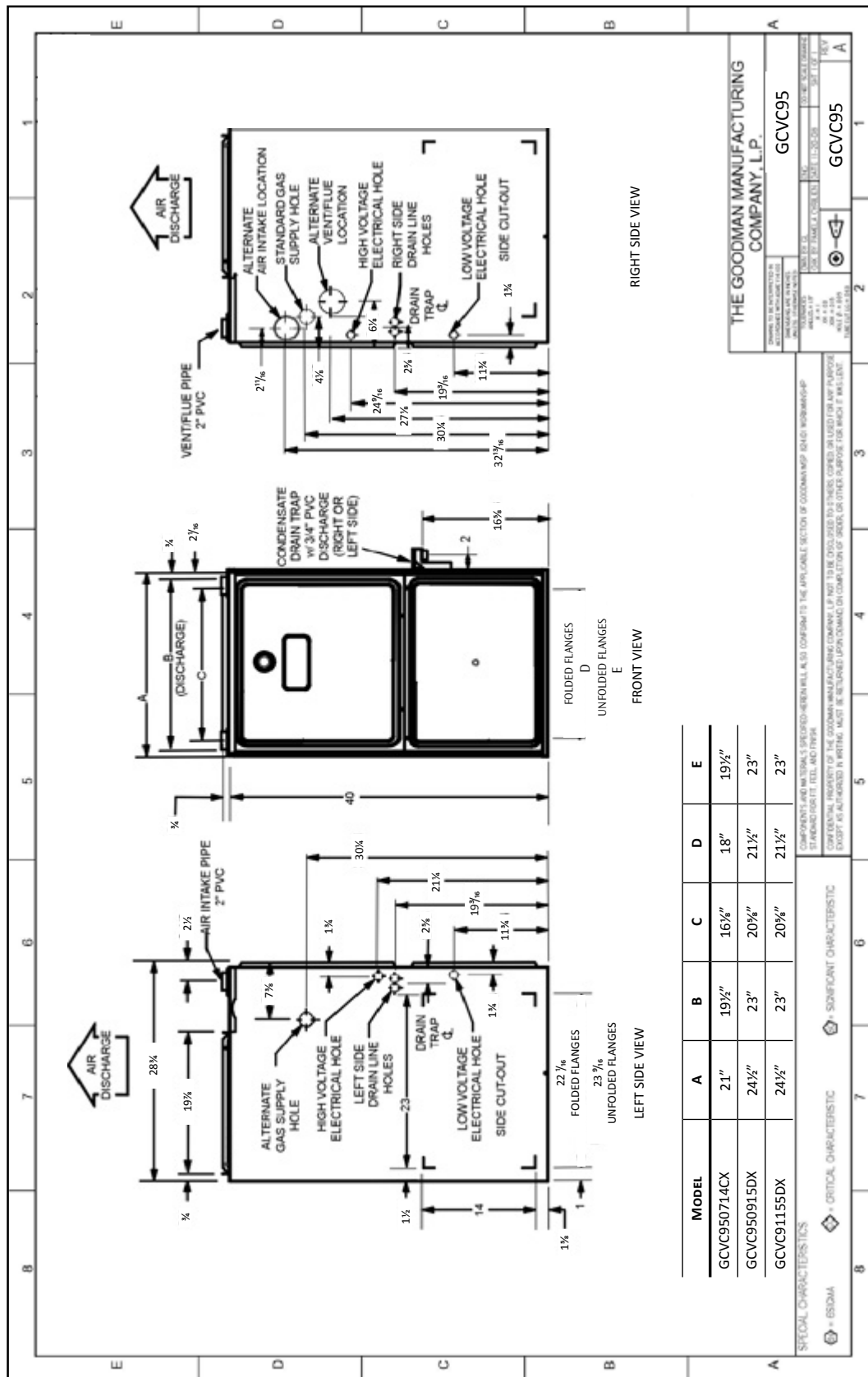
Cooling Performance

Total Capacity _____ MBH
 Sensible Capacity _____ MBH
 Outdoor Design TMP _____ °F DB / WB
 Air Temp entering _____ °F
 Evaporator Coil _____ °F
 Power Input Required _____ kW
 (less blower motor)

NOTES



CERTIFIED DIMENSIONS



ACCESSORIES LIST

MODEL	DESCRIPTION	GCVC95 0704CXA	GCVC95 0905DXA	GCVC9 1155DXA	√
LPM-05	LP Conversion Kit * (Springs & Orifice)	1	1	1	
LPM-06	LP Conversion Kit ** (Springs & Orifice)	1	1	1	
GSAS	Electronic Air Cleaners (-10, -11, -12 or -18)	√	√	√	
GMU	Media Air Cleaners (1620, 2020, 1625 or 2025)	√	√	√	
DEHUM1	Dehumidistat	√	√	√	
HAPS 31	High-Altitude Pressure Switch Kit	---	---	2	
HALP 13	High-Altitude Propane Gas Kit	---	---	2	
HANG 16	High-Altitude Natural Gas Kit	---	---	2	
EFR01	External Filter Rack	√	√	√	
DCVK-20	Horizontal/Vertical Concentric Vent Kit (2")	√	---	---	
DCVK-30	Horizontal/Vertical Concentric Vent Kit (3")	√	√	√	
CFB21	Downflow Floor Base	√	---	---	
CFB24	Downflow Floor Base	---	√	√	
017K00000S	Flush-mount vent kit	√	√	√	

* White-Rodgers gas valve ** Honeywell or White-Rodgers gas valve
 1 All Models up to 7,000' 2 7,001' to 11,000'
 3 7,001' to 9,000' 4 9,001' to 11,000'

Note: All installations above 7,000' require a pressure switch change. For installation in Canada, gas furnaces are certified only to 4,500'.