



Air Conditioning & Heating

GCH95

MULTI-POSITION, DUAL\$AVER™

CONVERTIBLE, MULTI-SPEED GAS FURNACE

SUBMITTAL DATA FORM

Job Name _____

Location _____

Purchaser _____

Order No. _____

Engineer _____

Unit No. _____

Model No. _____

Unit Designation _____

Performance Data Certified By: _____



Standard Features

- Patented TuffTube™ dual-diameter tubular heat exchanger
- Two-stage gas valve with revolutionary new convertible technology that allows installer to activate the two-stage valve with the flip of a dipswitch
- 110V Silicon Nitride igniter designed for maximum igniter life
- Furnace control board with self-diagnostics, color-coded low-voltage terminals, and provisions for electronic air cleaner and 24-volt humidifiers
- Control board stores the last five diagnostic codes in memory; simple push-button activation outputs the fault history to a flashing red LED
- Low constant fan allows homeowner to activate the low heat speed to efficiently circulate air throughout the home.
- Self-adjusting feature automatically adjusts to high or low stage based on outside temperature without an outdoor temperature sensor
- Dual-certified for sealed combustion direct vent (2-pipe) or non-direct vent (1-pipe) applications
- Easy-to-install top venting is standard; alternate flue/vent located on the right
- All models comply with California NOx emissions standards

Cabinet Features

- Fully insulated, heavy-gauge steel cabinet with durable baked-enamel finish
- Foil-faced insulation lines the heat exchanger
- Designed for multi-position installation — downflow, horizontal left or right
- Airtight solid bottom for side-return applications and easy-cut tabs for effortless removal in bottom air inlet applications
- Convenient left or right connection for gas/electric service
- Coil and furnace fit flush for most installations



* Complete warranty details available from your local dealer or at www.goodmanmfg.com. To receive the Lifetime Heat Exchanger Limited Warranty (good for as long as you own your home), the 10-Year Unit Replacement Limited Warranty and 10-Year Parts Limited Warranty, online registration is required within 60 days of installation. Online registration not required in California or Quebec.

PERFORMANCE DATA FOR SYSTEM

GAS FURNACE: _____

Heating Performance

Input Capacity _____ MBH
 Output Capacity _____ MBH
 Air Temp. Rise _____ °F

Supply Air Blower Performance

Total Supply Air _____ CFM
 Ext. Static Pressure _____ IWG
 Blower Speed _____ RPM
 Power Output Required _____ BHP
 Motor Ratings _____ HP
 Power Input Required _____ kW

Electrical Data

Power Supply _____
 Total Unit Amps _____
 Minimum Wire Size _____ AWG

Max Overcurrent Device:
 Fuse _____ Breaker _____ Amps _____

OUTDOOR UNIT: _____

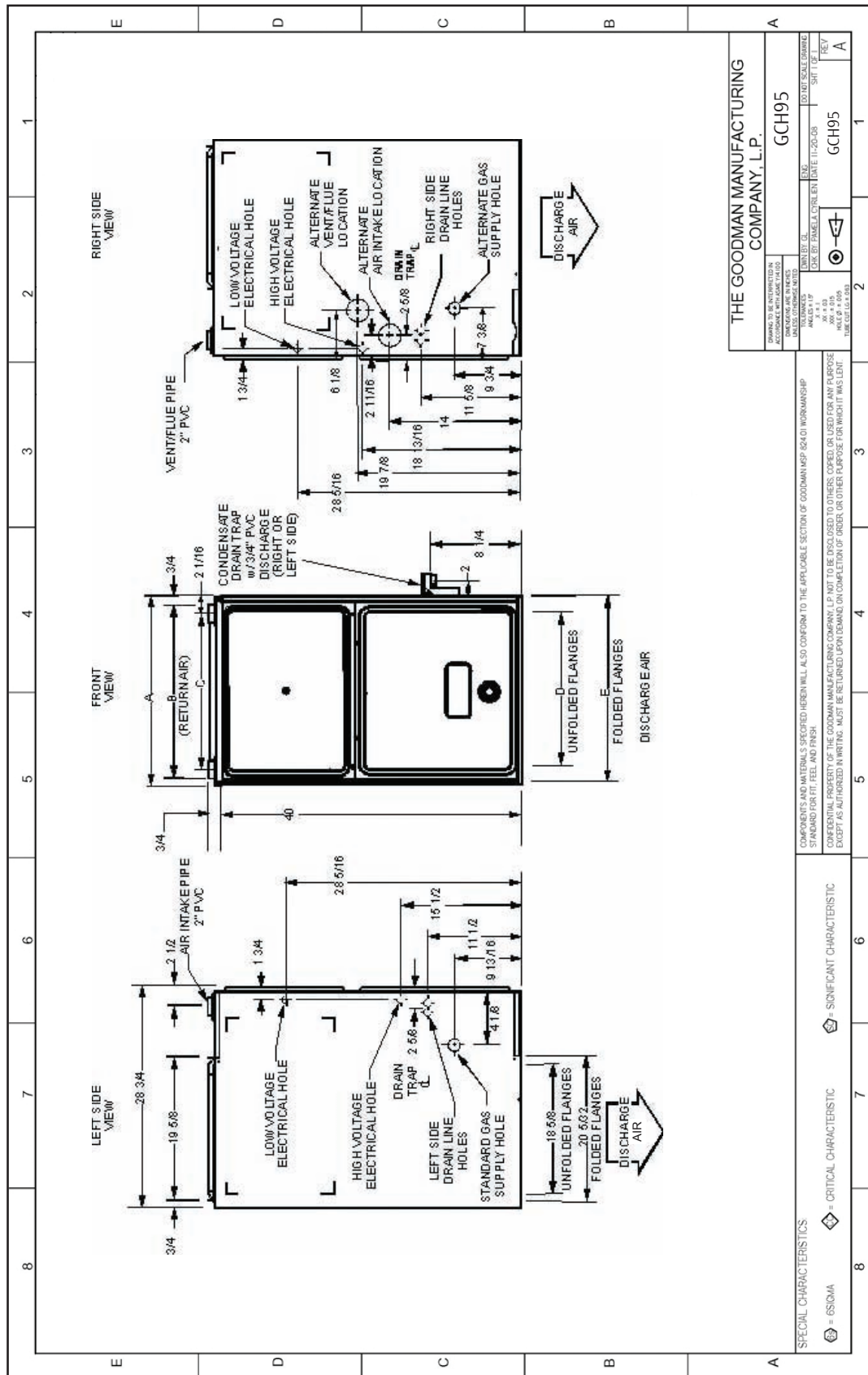
Cooling Performance

Total Capacity _____ MBH
 Sensible Capacity _____ MBH
 Outdoor Design TMP _____ °F DB / WB
 Air Temp entering _____ °F
 Evaporator Coil _____ °F
 Power Input Required _____ kW
 (less blower motor)

NOTES



CERTIFIED DIMENSIONS



MODEL	A	B	C	D	E
GCH950453BXA	17 1/2"	16"	12 3/4"	14 1/2"	16"
GCH950703BXA	17 1/2"	16"	12 3/4"	14 1/2"	16"
GCH950704CXA	21"	19 1/2"	16 3/4"	18"	19 1/2"
GCH950904CXA	21"	19 1/2"	16 3/4"	18"	19 1/2"
GCH950905DXA	24 1/2"	23"	20 3/4"	21 1/2"	23"
GCH931155DXA	24 1/2"	23"	20 3/4"	21 1/2"	23"

ACCESSORIES LIST

ACCESSORY	DESCRIPTION	GCH95 0453BXA	GCH95 0703BXA	GCH95 0704CXA	GCH95 0904CXA	GCH95 0905DXA	GCH9 1155DXA	√
LPM-05	LP Conversion Kit (Springs & Orifice) ¹	√	√	√	√	√	√	
LPM-06	LP Conversion Kit (Springs & Orifice) ²	√	√	√	√	√	√	
LPLP01	LP Gas Low-Pressure Kit						√	
GSAS	Electronic Air Cleaners (-10, -11, -12, -18)	√	√	√	√	√	√	
GMU	Media Air Cleaners (1620, 2020, 1625, 2025)	√	√	√	√	√	√	
HANG11	High Altitude Natural Gas Kit	1	1	1	1	1	1	
HANG12	High Altitude Natural Gas Kit	2	2	2	2	2	2	
HALP10	High Altitude LP Gas Kit	3	3	3	3	3	3	
HAPS27	High Altitude Pressure Switch Kit	3	3	3	3	3	3	
EFR01	External Filter Rack	√	√	√	√	√	√	
DCVK-20	Horizontal/Vertical Concentric Vent Kit (2")	√	√	---	---	---	---	
DCVK-30	Horizontal/Vertical Concentric Vent Kit (3")	√	√	√	√	√	√	
0170K00000S	Flush-mount Vent Kit	√	√	√	√	√	√	

¹ White-Rodgers valves only

² White-Rodgers and Honeywell valves

√ Indicates accessories available for this model

1 Indicates 7,001' to 9,000' altitude

2 Indicates 9,001' to 11,000' altitude

3 Indicates 7,001' to 11,000' altitude

NOTES

- All installations above 7,000' require a pressure switch change. For installation in Canada, furnaces are certified only to 4,500'.
- Downflow Floor base: When the GCH9 model is installed directly on a wood floor, a downflow floor base must be used. Those model numbers are: CFB17, CFB21 and CFB24.