



Air Conditioning & Heating

SUBMITTAL DATA FORM

Job Name _____

Location _____

Purchaser _____

Order No. _____

Engineer _____

Unit No. _____

Model No. _____

Unit Designation _____

Performance Data Certified By: _____



CPH SERIES

3- TO 6-TON SELF-CONTAINED

PACKAGED HEAT PUMP

WITH R-410A

Standard Features

- Chlorine-free R-410A refrigerant
- High-efficiency scroll compressor
- Copper tube/aluminum fin coils
- Contactor with lugs
- High-capacity, steel-cased filter dryer
- Single-point entry
- 24-volt terminal strip
- Convertible
- Easy to service
- Built-in filter rack with standard 2" filters
- Bottom utility entry
- ARI Certified; ETL Listed

Cabinet Features

- Heavy-gauge, galvanized-steel cabinet with UV-resistant powder-paint finish
- Full Perimeter Rail
- Curb Fit

Contents

Performance Data
Accessories List
Certified Dimensions
Individual Accessories Dimensions



* Complete warranty details available at www.goodmanmfg.com.



PERFORMANCE DATA**Cooling Performance**

Tota Capacity _____ MBH
Sensible Capacity _____ MBH
Outdoor Design TMP _____ °F DB / WB
Air Temp entering _____
Evaporator Coil _____ °F
Power Input Required _____ kW
(less blower motor)

Heating Performance

Total Heating Capacity _____ kW
_____ BTU/h

Supply Air Blower Performance

Total Supply Air _____ CFM
Ext. Static Pressure _____ IWG
Blower Speed _____ RPM
Power Output Required _____ BHP
Motor Ratings _____ HP
Power Input Required _____ kW

Electrical Data

Power Supply _____
Total Unit Amps _____ Amps

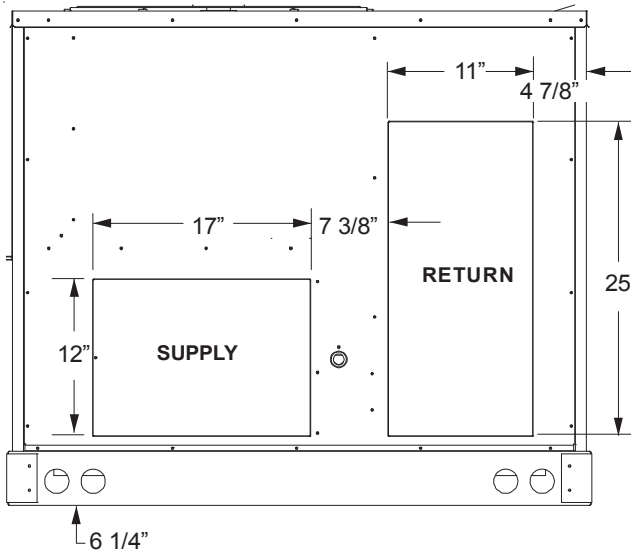
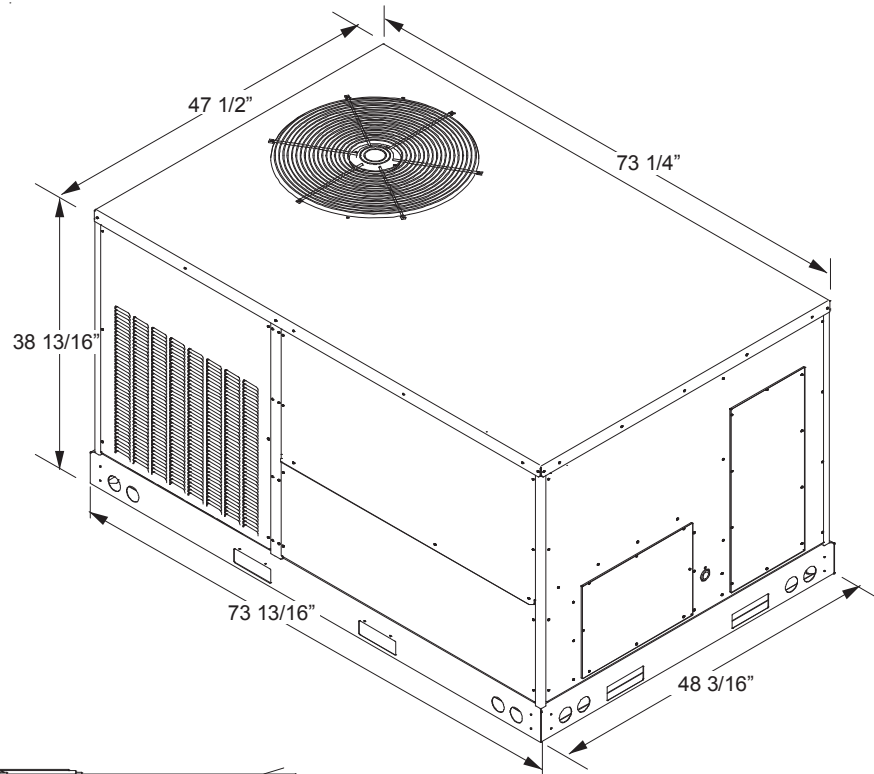
Max Overcurrent Device:

Fuse _____ Breaker _____ Amps _____

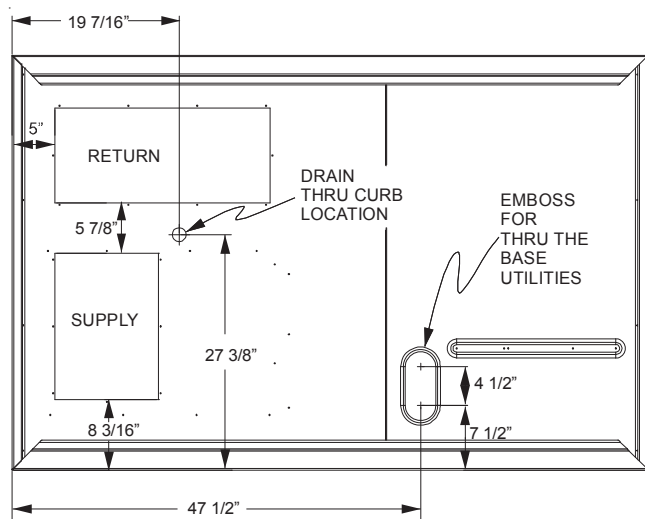
ACCESSORIES LIST (DETAILED SPECIFICATIONS BEGIN ON PAGE 6.)

ITEM #	DESCRIPTION	FITS MODEL SIZES	PACKAGE DIMENSIONS (")	SHIP WEIGHT (LBS.)
14CURB3672B	Roof Curb – 14" Tall	3-6 tons	16 x 6 x 76	119
25FD3672	25% Manual Fresh Air Damper	3-6 tons	13 x 15½ x 27	11
25MFD3672	25% Motorized Fresh Air Damper	3-6 tons	13 x 15½ x 27	12
BRD3672	Horizontal Barometric Relief Damper	3-6 tons	15 x 15 x 20	8
CDK4872	Concentric Duct Kit	4-6 tons	25 x 48 x 16	35
DNECONGS3672B	Downflow Economizer	3-6 tons	43 x 20 x 24	75
DNECONGS3672B-NR	Downflow Economizer w/o Barometric Relief	3-6 tons	43 x 20 x 24	75
DNSQRRND4872B	Downflow Square-to-Round Adapter 18" Round	4-6 tons	13 x 33 x 10	11
DNBBS3672B	Burglar Bar Sleeves Includes Supply & Return	3-6 tons	41 x 18 x 13	45
GHRC-1	Hurricane Restraint Clip	All Models	10 x 5 x 4	4
HAILGD04	Condenser Coil Hail Guard	6 tons	41 x 37 x 3	27
HA-02	High-Altitude Kit	All Models	5.4 x 4.6 x 4.1	1.7
HSKT072B	High-Static Kit	6 tons	20 x 7¼ x 8¾	40
HZECONGS3672B	Horizontal Economizer	3-6 tons	16½ x 21½ x 36	75
LAKT01	Low-Ambient Kit	3-6 tons	6 x 6 x 6	3
LPM-05	LP Conversion Kit	3-6 tons	4¼ x 6¼ x 4½	1
PE36722B	Power Exhaust 208/230v CPX Unit	3-6 tons	37 x 18 x 16	35
PE36724B	Power Exhaust 460v CPX Unit	3-6 tons	37 x 18 x 16	35

DIMENSIONS — 3- to 5-Ton Models



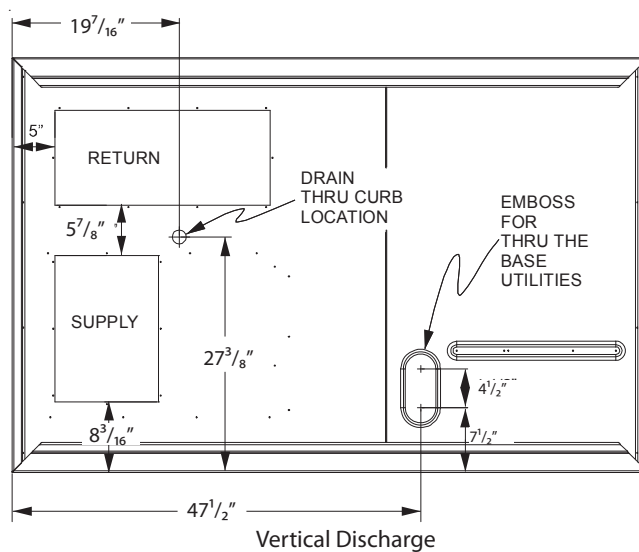
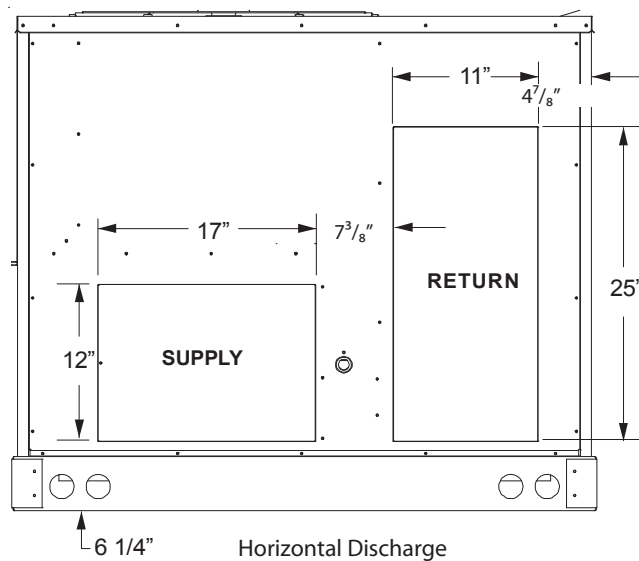
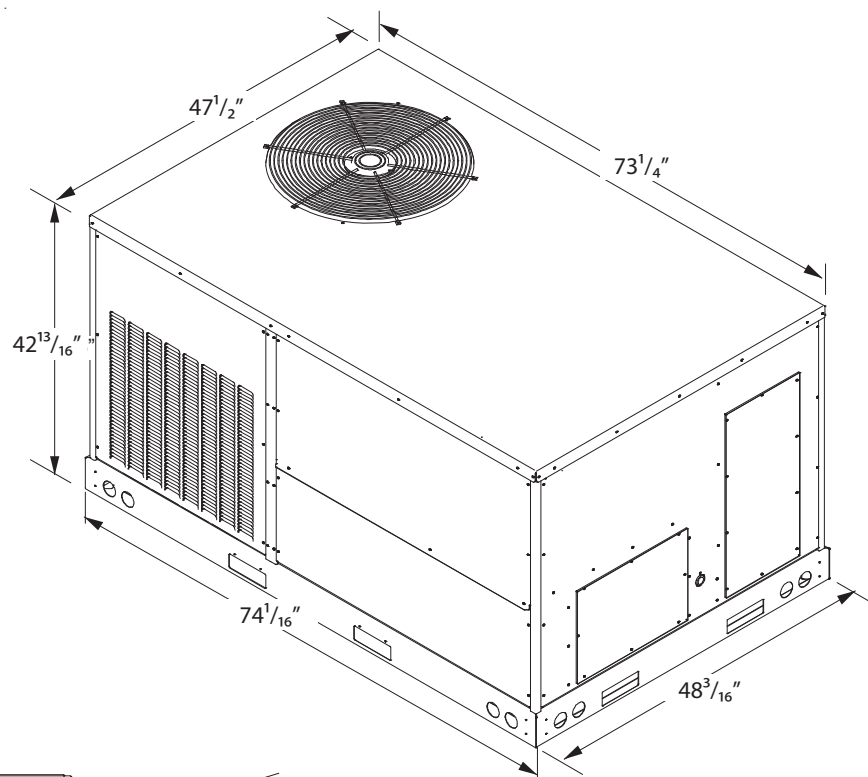
Horizontal Discharge



BOTTOM VIEW OF UNIT

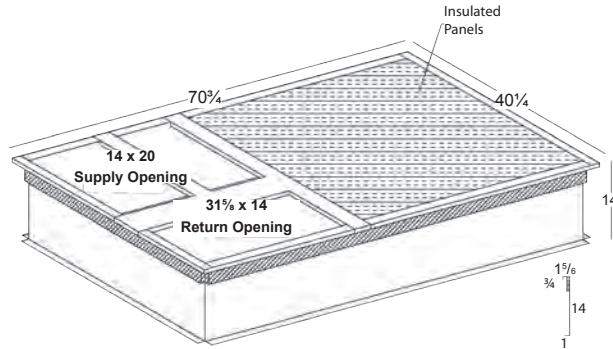
Vertical Discharge

DIMENSIONS—6-TON MODELS

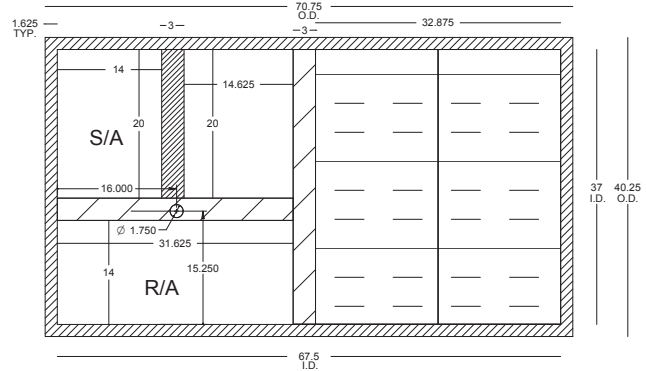


Roof CURB — #14CURB3672B

3-D VIEW



TOP VIEW



SPECIFICATIONS

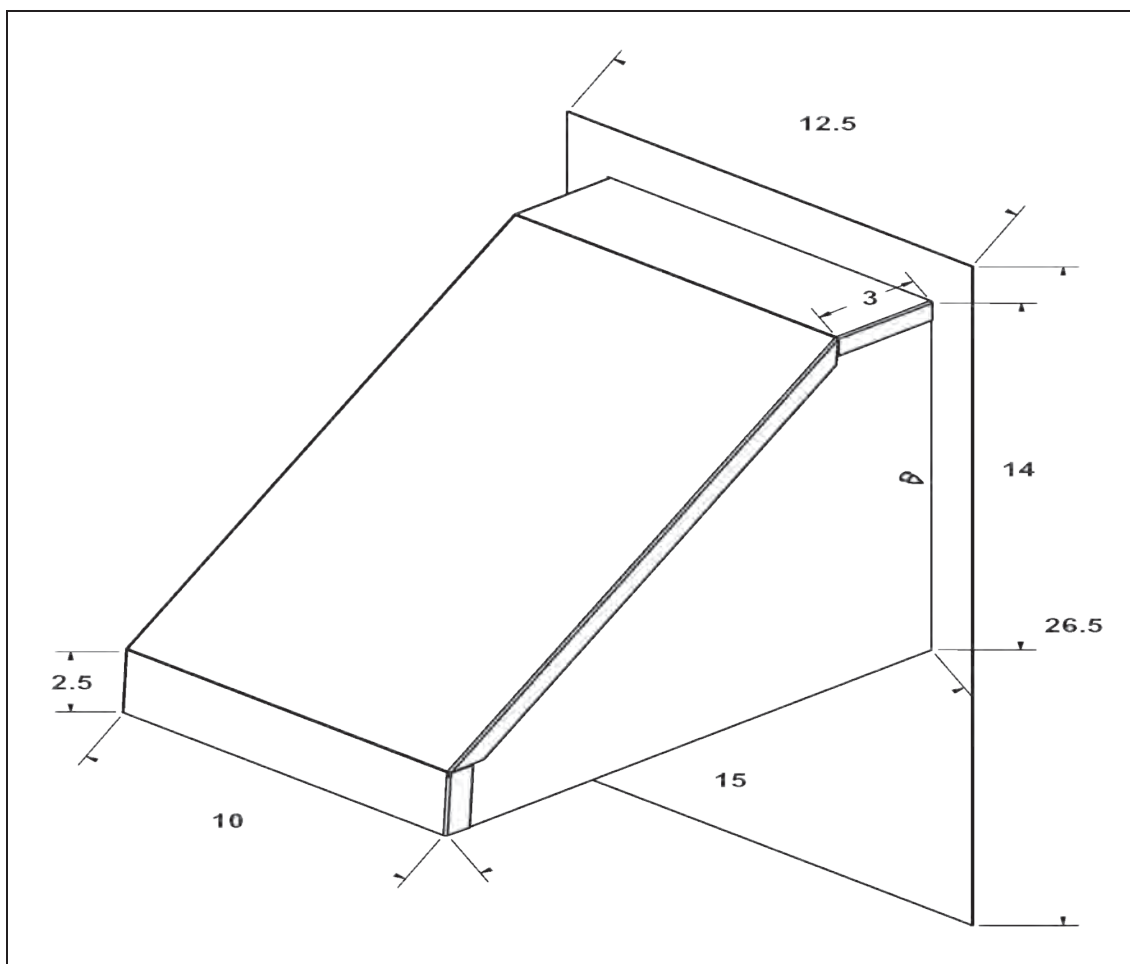
- 18-Gauge Construction
- 1 x 4 Wood Nailer attached to top of the curb
- Shipped knocked down with all hardware
- Gasket included
- Bed-Rail style corners

Note: outside duct dimension should be 1/2" less than opening dimensions above.

NO CURB ADAPTER REQUIRED WHEN REPLACING CARRIER & BRYANT MODELS

No curb adapter is required when replacing an existing Carrier or Bryant RTU with a Goodman RTU in these situations; the footprints and locations of the return and supply duct work match.

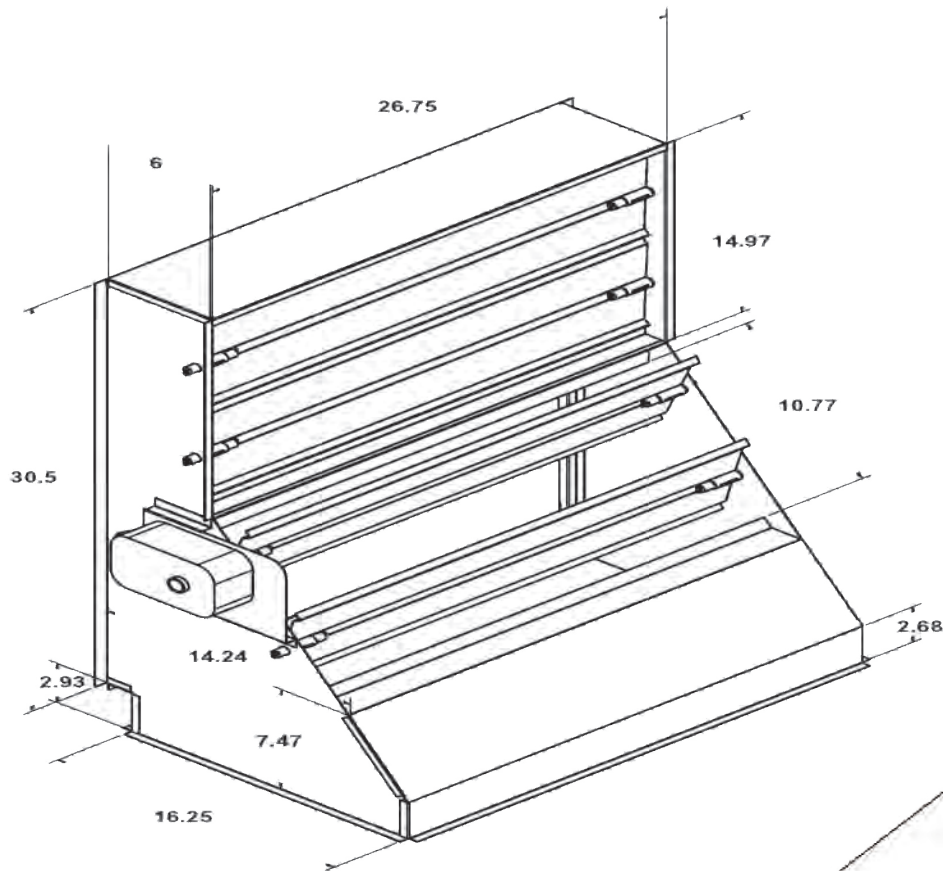
NEW UNIT	EXISTING CARRIER	EXISTING BRYANT
3 TO 6 TONS CPC, CPG, CPH	48/50 TJ, LJ, DJ, QJ 48/50 TM, HJ 004 - 007	580C-D, 558C-D, 548C-D 580F, 558F, 581B 036 - 072

MANUAL FRESH AIR DAMPER — #25FD3672**MOTORIZED FRESH AIR DAMPER — #25MFD3672****SPECIFICATIONS****Manual Damper**

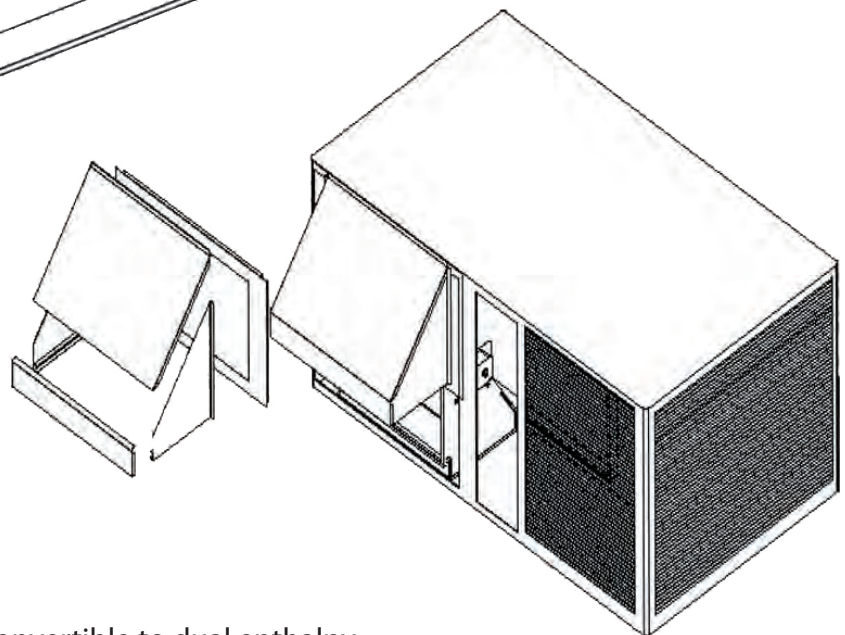
- Provides up to 25% fresh air
- Locking selection knob provides constant opening
- Painted to match the unit
- Fits all 3- to 5-ton package units in all fuels

Motorized Damper

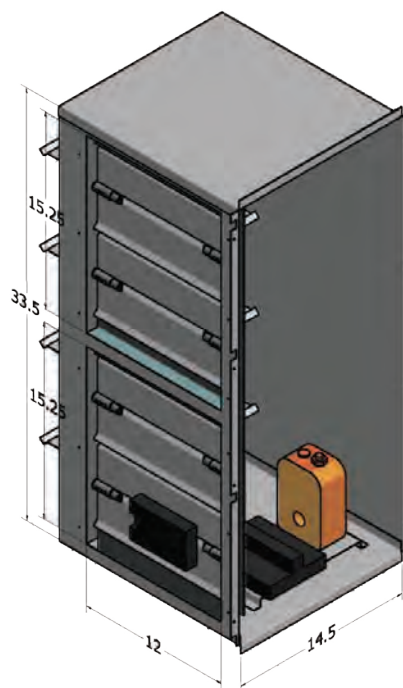
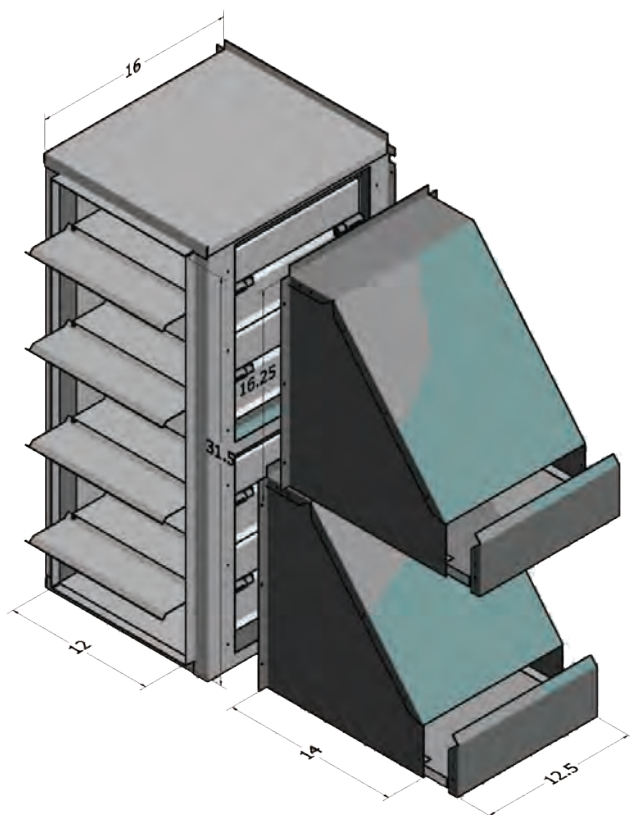
- 24 VAC Damper motor with spring return
- Fully assembled and factory wired
- Painted to match the unit
- Fits all 3- to 5-ton package units in all fuels

DOWNFLOW ECONOMIZER — #DNECON3672B****SPECIFICATIONS**

- Fully modulating
- Up to 100% fresh air
- Integral barometric relief
- Hoods painted to match unit
- Honeywell economizer control
- Single adjustable enthalpy control convertible to dual enthalpy
- Adjustable minimum fresh air
- Factory wired
- Fits all 3- to 5-ton models

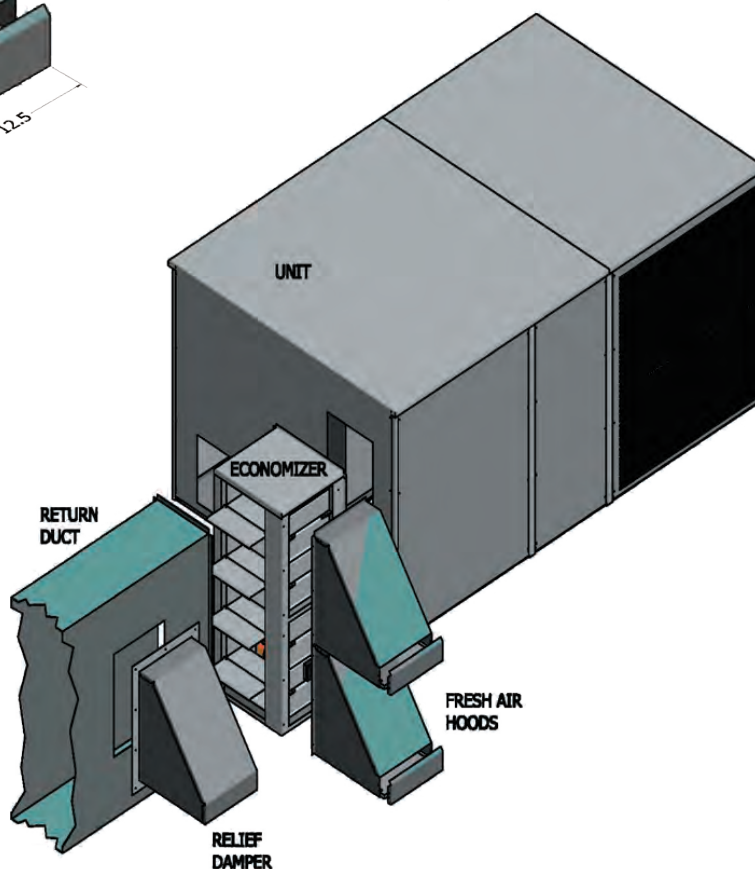


HORIZONTAL ECONOMIZER — #HZECON**3672B

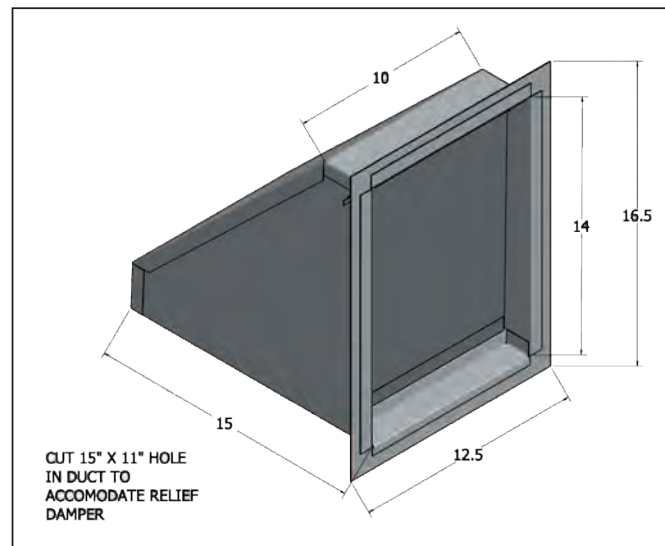


SPECIFICATIONS

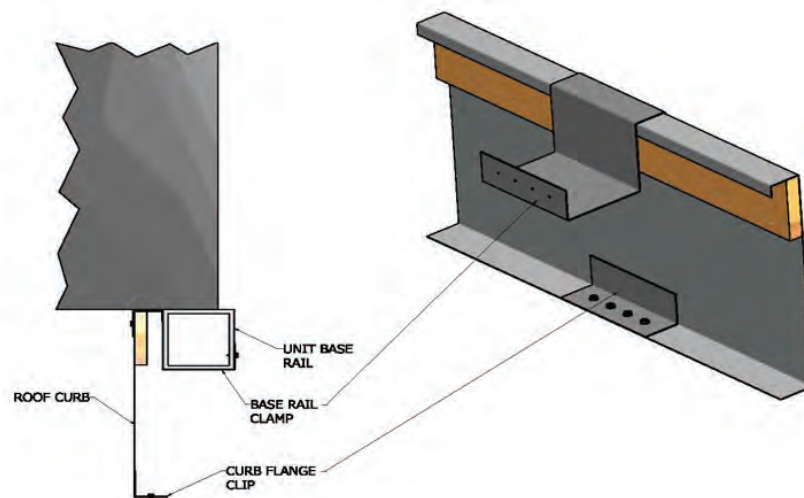
- Fully modulating
- Up to 100% fresh air
- Honeywell economizer control
- Single adjustable enthalpy control convertible to dual enthalpy
- Adjustable minimum fresh air
- Factory wired
- Fits all 3- to 5-ton models



BAROMETRIC RELIEF DAMPER — #BRD3672



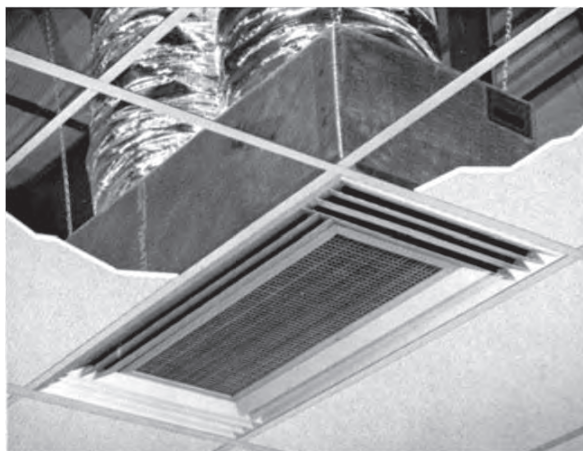
HURRICANE RESTRAINT CLIP — GHRC-1



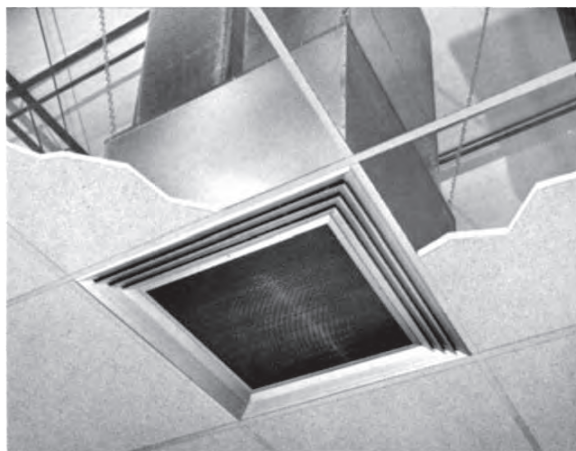
SPECIFICATIONS

- 14-gauge construction
- Location and quantity of clips dictated by unit need
- Clips are fastened to the unit and curb using sheet-metal screws
- Seismic angle is fastened with approved fastener

CONCENTRIC DUCT KIT — #CDK36 / #CDK4872



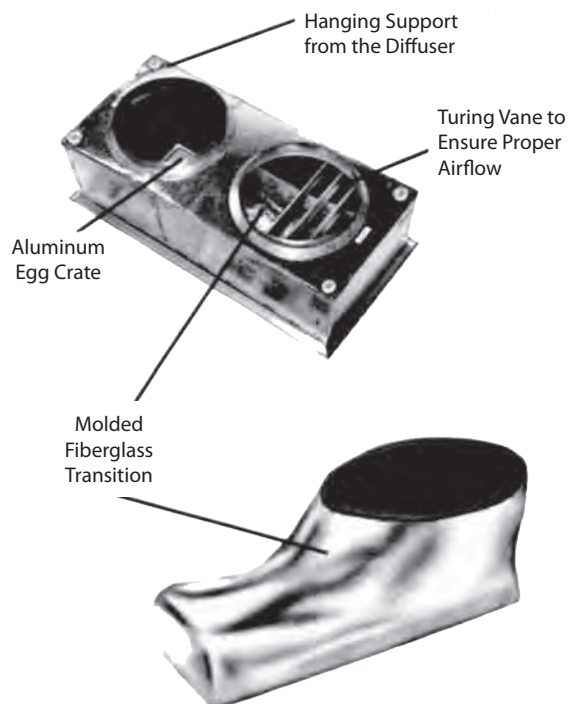
Light Commercial
T-Bar Ceiling



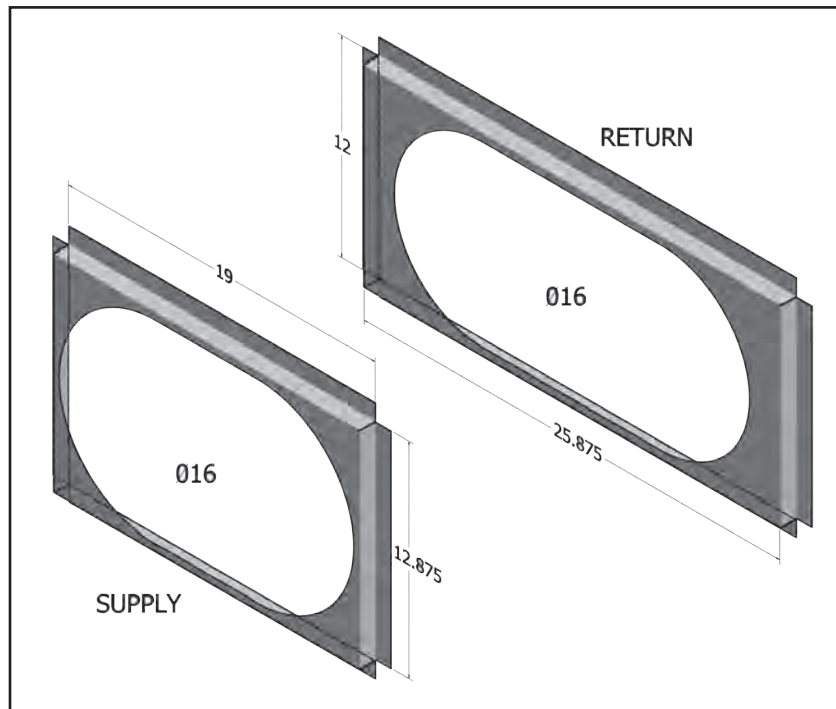
Commercial
T-Bar Ceiling

SPECIFICATIONS

- All-aluminum diffuser with aluminum return air egg crate
- Built-in anti-sweat gasket
- Molded fiberglass transition (through five tons)
- Built-in hanging supports
- Diffuser box constructed of fiberglass duct board (through 7½ tons) or sheet metal



3-Ton SQUARE-TO-ROUND — #DNSQR36



4- TO 6-Ton SQUARE-TO-ROUND — #DNSQR4872

