

## WALL-MOUNT AIR HANDLER 1½ TO 3 TONS

### Contents

|                              |   |
|------------------------------|---|
| Nomenclature .....           | 2 |
| Accessories .....            | 2 |
| Product Specifications ..... | 3 |
| Dimensions .....             | 6 |
| Airflow Data .....           | 8 |
| Wiring Diagram .....         | 9 |

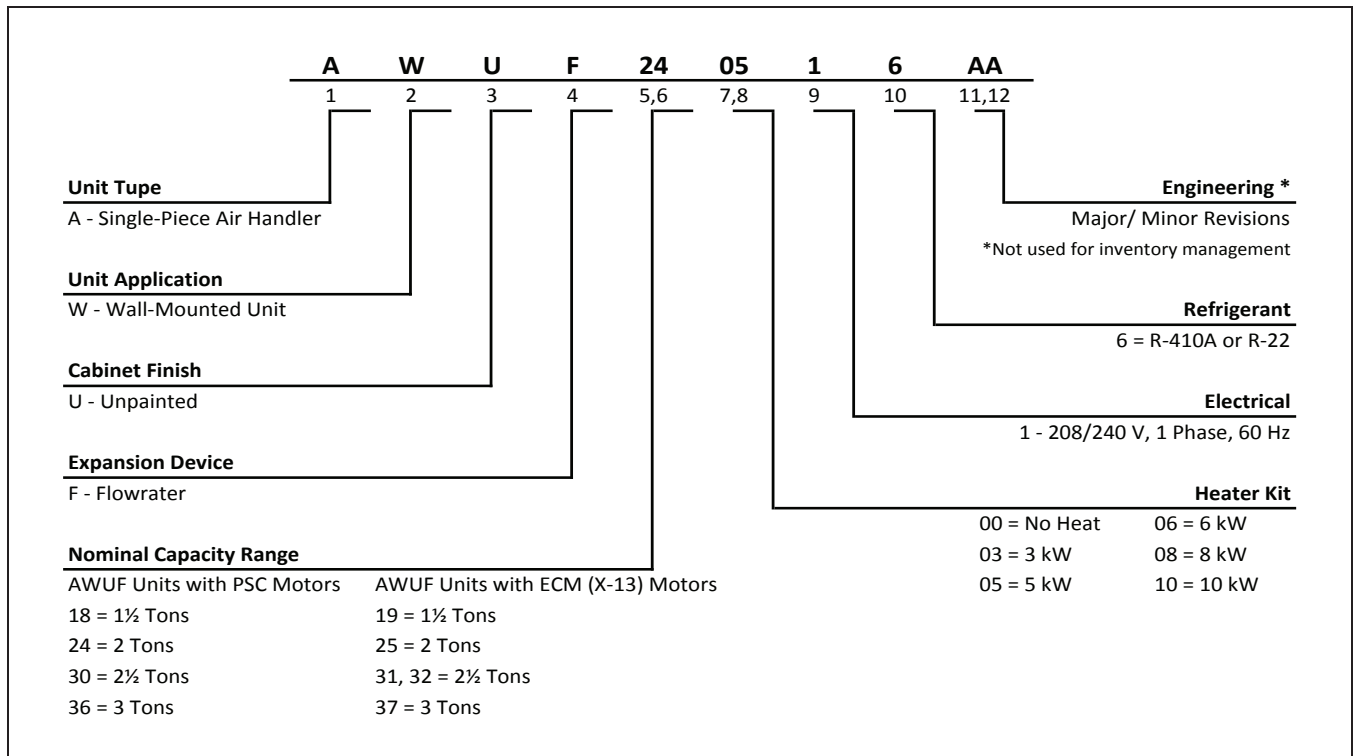


### Product Features

- Equipped with a Check Flowrater for cooling-only and heat pump operation
- Direct-drive, multi-speed motors allows air volume variation for heating/cooling
  - Multi-speed ECM: AWUF19, 25, 31, 32, 37
  - Multi-speed PSC motor: AWUF18, 24, 30, 36
- Sequence-controlled, rust-resistant nickel chromium heating elements of 3, 5, 8, and 10 kW
- Aluminum tubing coils on all models
- Cabinet air leakage less than 2.0% at 1.0 inch H<sub>2</sub>O when tested in accordance with ASHRAE standard 193
- Cabinet air leakage less than 1.4% at 0.5 inch H<sub>2</sub>O when tested in accordance with ASHRAE standard 193
- Factory-installed pull-type disconnect
- Thermoplastic drain pan with bottom primary and secondary drain connections
- Built-in filter rack (filter included)
- Large chassis (2½- and 3-ton units) – front return only
- Small chassis (1½- and 2-ton units) – front or bottom return
- Wall-hanging bracket provided
- AHRI Certified; ETL Listed



\* Complete warranty details available from your local dealer or at [www.amana-hac.com](http://www.amana-hac.com). To receive the 10-Year Parts Limited Warranty, online registration must be completed within 60 days of installation. Online registration is not required in California or Québec.



**ACCESSORIES**

| MODEL           | ITEM # | DESCRIPTION      |
|-----------------|--------|------------------|
| AWUF18 - AWUF19 | Wad-1  | Wall access door |
| AWUF24 - AWUF25 | Wad-1  | Wall access door |
| AWUF30 - AWUF37 | Wad-2  | Wall access door |

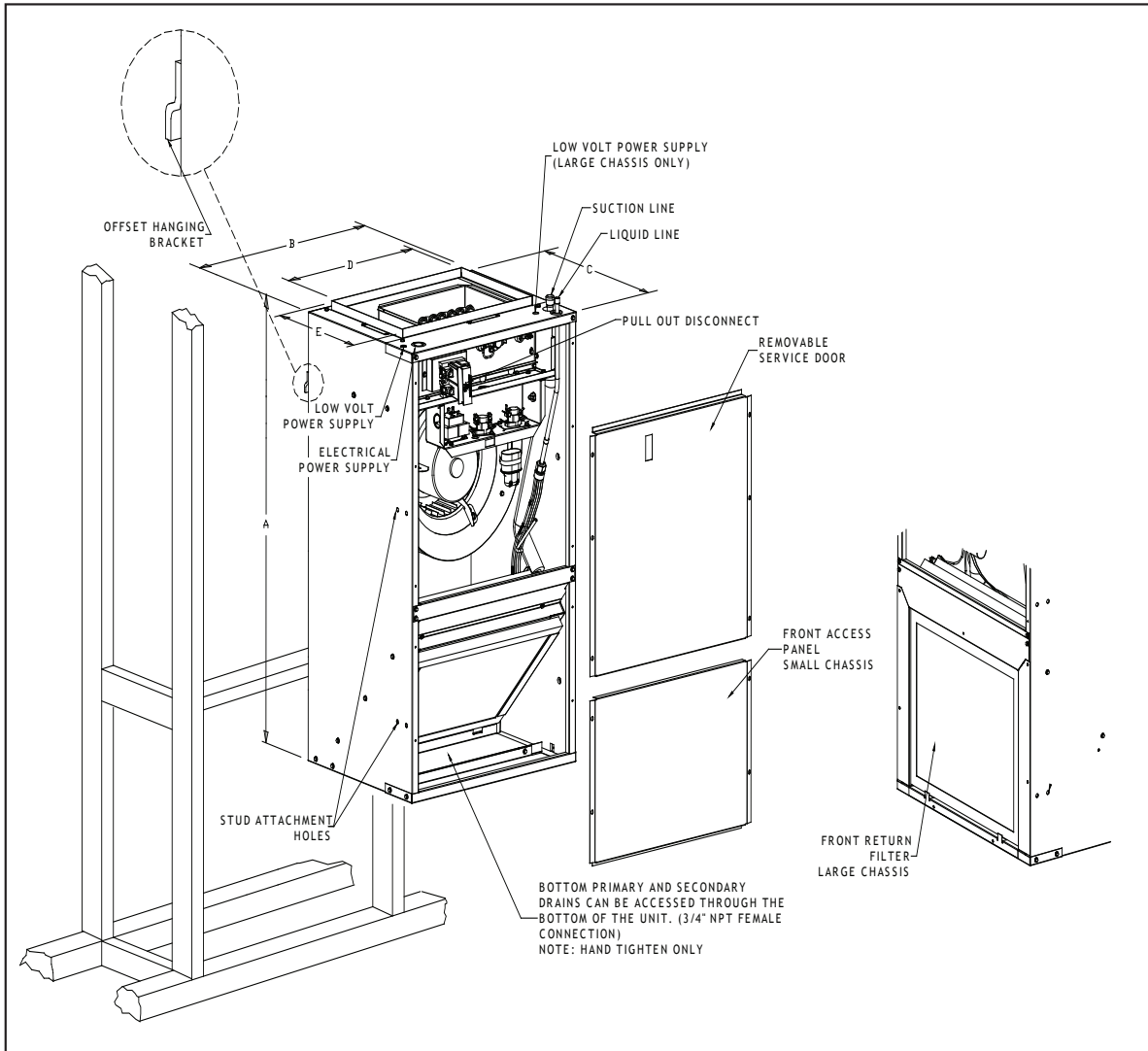
|                                 | AWUF<br>180316B | AWUF<br>180516B | AWUF<br>180816B | AWUF<br>190316A | AWUF<br>190516A | AWUF<br>190816A | AWUF<br>240316B | AWUF<br>240516B | AWUF<br>240816B | AWUF<br>241016B |
|---------------------------------|-----------------|-----------------|-----------------|-----------------|-----------------|-----------------|-----------------|-----------------|-----------------|-----------------|
| <b>NOMINAL RATINGS</b>          |                 |                 |                 |                 |                 |                 |                 |                 |                 |                 |
| Cooling (BTU/h)                 | 18,000          | 18,000          | 18,000          | 18,000          | 18,000          | 18,000          | 24,000          | 24,000          | 24,000          | 24,000          |
| Electric Heat (kW)              | 3               | 5               | 8               | 3               | 5               | 8               | 3               | 5               | 8               | 10              |
| <b>BLOWER</b>                   |                 |                 |                 |                 |                 |                 |                 |                 |                 |                 |
| Diameter                        | 9               | 9               | 9               | 10              | 10              | 10              | 10              | 10              | 10              | 10              |
| Width                           | 6               | 6               | 6               | 6               | 6               | 6               | 6               | 6               | 6               | 6               |
| <b>COIL CONNECTIONS</b>         |                 |                 |                 |                 |                 |                 |                 |                 |                 |                 |
| Liquid                          | 3/8"            | 3/8"            | 3/8"            | 3/8"            | 3/8"            | 3/8"            | 3/8"            | 3/8"            | 3/8"            | 3/8"            |
| Suction                         | 5/8"            | 5/8"            | 5/8"            | 5/8"            | 5/8"            | 5/8"            | 5/8"            | 5/8"            | 5/8"            | 5/8"            |
| Coil Drain Connection (FPT)     | 3/4"            | 3/4"            | 3/4"            | 3/4"            | 3/4"            | 3/4"            | 3/4"            | 3/4"            | 3/4"            | 3/4"            |
| <b>ELECTRICAL DATA</b>          |                 |                 |                 |                 |                 |                 |                 |                 |                 |                 |
| Voltage                         | 230/208         | 230/208         | 230/208         | 230/208         | 230/208         | 230/208         | 230/208         | 230/208         | 230/208         | 230/208         |
| Minimum Circuit Ampacity (230V) | 17.3            | 26.6            | 39.6            | 18.9            | 28.3            | 41.3            | 17.3            | 26.6            | 39.6            | 52.7            |
| Minimum Circuit Ampacity (208V) | 15.1            | 23.3            | 34.6            | 16.8            | 24.9            | 36.2            | 15.1            | 23.3            | 34.6            | 45.9            |
| Max. Overcurrent Device (240V)  | 20              | 30              | 40              | 20              | 30              | 45              | 20              | 30              | 40              | 60              |
| Max. Overcurrent Device (208V)  | 20              | 25              | 35              | 20              | 25              | 40              | 20              | 25              | 35              | 50              |
| Minimum VAC                     | 197             | 197             | 197             | 197             | 197             | 197             | 197             | 197             | 197             | 197             |
| Maximum VAC                     | 253             | 253             | 253             | 253             | 253             | 253             | 253             | 253             | 253             | 253             |
| <b>BLOWER MOTOR</b>             |                 |                 |                 |                 |                 |                 |                 |                 |                 |                 |
| Full Load Amps (FLA)            | 1.3             | 1.3             | 1.3             | 2.6             | 2.6             | 2.6             | 1.3             | 1.3             | 1.3             | 1.3             |
| Horsepower (HP)                 | 1/5             | 1/5             | 1/5             | 1/3             | 1/3             | 1/3             | 1/5             | 1/5             | 1/5             | 1/5             |
| <b>SHIP WEIGHT (LBS)</b>        |                 |                 |                 |                 |                 |                 |                 |                 |                 |                 |
|                                 | 84              | 84              | 84              | 84              | 84              | 84              | 84              | 84              | 84              | 84              |

PRODUCT SPECIFICATIONS

|                                 | AWUF<br>250316B | AWUF<br>250516B | AWUF<br>250816B | AWUF<br>251016B | AWUF<br>300316B | AWUF<br>300516B | AWUF<br>300816B | AWUF<br>301016B | AWUF<br>310516A* | AWUF<br>310816A* |
|---------------------------------|-----------------|-----------------|-----------------|-----------------|-----------------|-----------------|-----------------|-----------------|------------------|------------------|
| <b>NOMINAL RATINGS</b>          |                 |                 |                 |                 |                 |                 |                 |                 |                  |                  |
| Cooling (BTU/h)                 | 24,000          | 24,000          | 24,000          | 24,000          | 30,000          | 30,000          | 30,000          | 30,000          | 30,000           | 30,000           |
| Electric Heat (kW)              | 3               | 5               | 8               | 10              | 3               | 5               | 8               | 10              | 5                | 8                |
| <b>BLOWER</b>                   |                 |                 |                 |                 |                 |                 |                 |                 |                  |                  |
| Diameter                        | 10              | 10              | 10              | 10              | 9               | 9               | 9               | 9               | 10               | 10               |
| Width                           | 6               | 6               | 6               | 6               | 8               | 8               | 8               | 8               | 8                | 8                |
| <b>COIL CONNECTIONS</b>         |                 |                 |                 |                 |                 |                 |                 |                 |                  |                  |
| Liquid                          | 3/8"            | 3/8"            | 3/8"            | 3/8"            | 3/8"            | 3/8"            | 3/8"            | 3/8"            | 3/8"             | 3/8"             |
| Suction                         | 5/8"            | 5/8"            | 5/8"            | 5/8"            | 3/4"            | 3/4"            | 3/4"            | 3/4"            | 3/4"             | 3/4"             |
| Coil Drain Connection (FPT)     | 3/4"            | 3/4"            | 3/4"            | 3/4"            | 3/4"            | 3/4"            | 3/4"            | 3/4"            | 3/4"             | 3/4"             |
| <b>ELECTRICAL DATA</b>          |                 |                 |                 |                 |                 |                 |                 |                 |                  |                  |
| Voltage                         | 230/208         | 230/208         | 230/208         | 230/208         | 230/208         | 230/208         | 230/208         | 230/208         | 230/208          | 230/208          |
| Minimum Circuit Ampacity (230V) | 18.9            | 28.3            | 41.3            | 54.3            | 17.6            | 27.0            | 40.0            | 53.0            | 30.1             | 43.1             |
| Minimum Circuit Ampacity (208V) | 16.8            | 24.9            | 36.2            | 47.5            | 15.5            | 23.6            | 34.9            | 46.2            | 26.8             | 38.1             |
| Max. Overcurrent Device (240V)  | 20              | 30              | 45              | 60              | 20              | 30              | 40              | 60              | 35               | 45               |
| Max. Overcurrent Device (208V)  | 20              | 25              | 40              | 50              | 20              | 25              | 35              | 50              | 30               | 40               |
| Minimum VAC                     | 197             | 197             | 197             | 197             | 197             | 197             | 197             | 197             | 197              | 197              |
| Maximum VAC                     | 253             | 253             | 253             | 253             | 253             | 253             | 253             | 253             | 253              | 253              |
| <b>BLOWER MOTOR</b>             |                 |                 |                 |                 |                 |                 |                 |                 |                  |                  |
| Full Load Amps (FLA)            | 2.6             | 2.6             | 2.6             | 2.6             | 1.58            | 1.58            | 1.58            | 1.58            | 4.1              | 4.1              |
| Horsepower (HP)                 | 1/3             | 1/3             | 1/3             | 1/3             | 1/3             | 1/3             | 1/3             | 1/3             | 1/2              | 1/2              |
| <b>SHIP WEIGHT (LBS)</b>        |                 |                 |                 |                 |                 |                 |                 |                 |                  |                  |
|                                 | 84              | 84              | 84              | 84              | 93              | 109             | 109             | 109             | 109              | 109              |

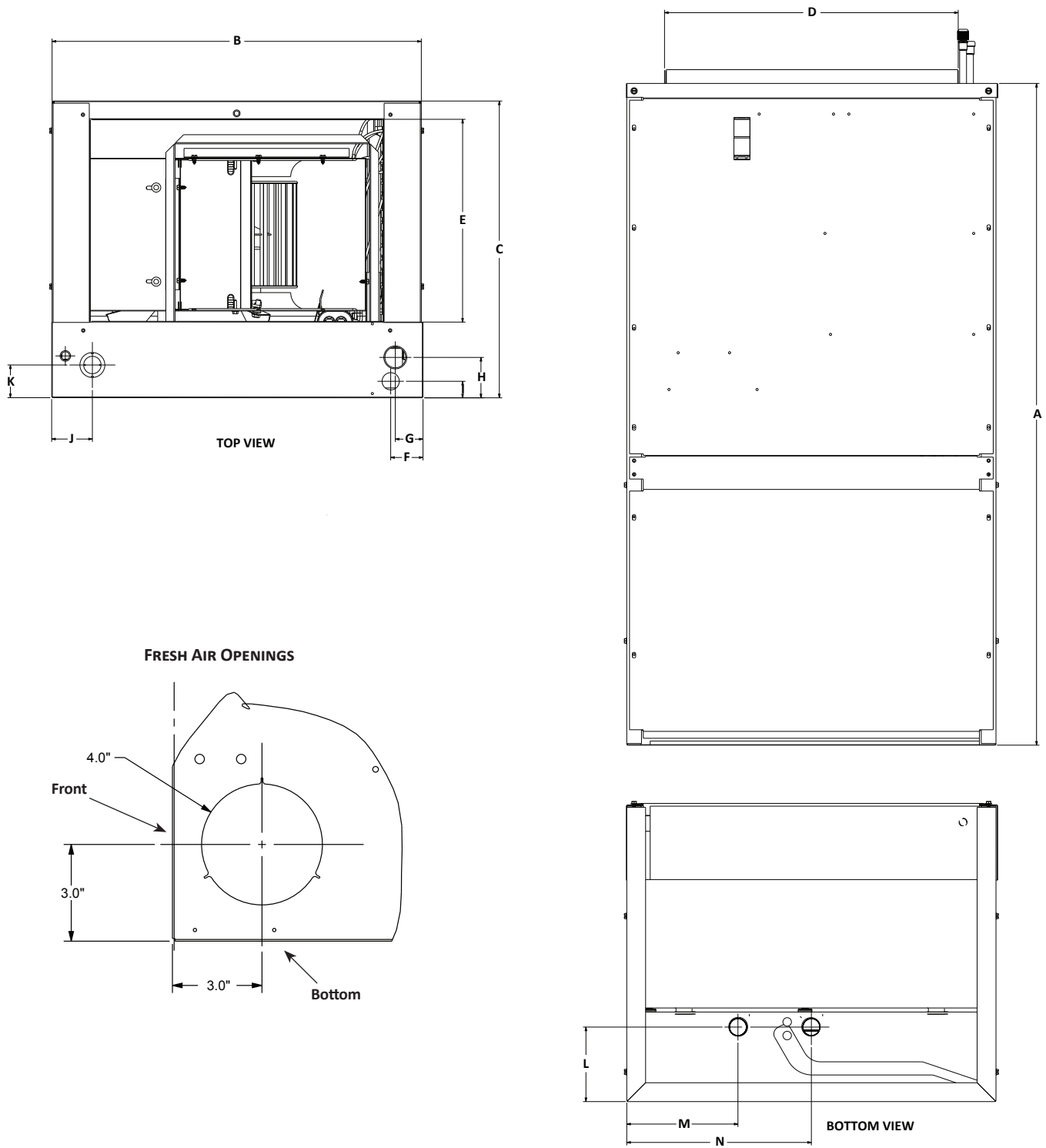
|                                 | AWUF<br>321016A* | AWUF<br>360516B | AWUF<br>360816B | AWUF<br>361016B | AWUF<br>370516B | AWUF<br>370816B | AWUF<br>371016B |
|---------------------------------|------------------|-----------------|-----------------|-----------------|-----------------|-----------------|-----------------|
| <b>NOMINAL RATINGS</b>          |                  |                 |                 |                 |                 |                 |                 |
| Cooling (BTU/h)                 | 30,000           | 36,000          | 36,000          | 36,000          | 36,000          | 36,000          | 36,000          |
| Electric Heat (kW)              | 10               | 5               | 8               | 10              | 5               | 8               | 10              |
| <b>BLOWER</b>                   |                  |                 |                 |                 |                 |                 |                 |
| Diameter                        | 10               | 9               | 9               | 9               | 10              | 10              | 10              |
| Width                           | 8                | 8               | 8               | 8               | 8               | 8               | 8               |
| <b>COIL CONNECTIONS</b>         |                  |                 |                 |                 |                 |                 |                 |
| Liquid                          | 3/8"             | 3/8"            | 3/8"            | 3/8"            | 3/8"            | 3/8"            | 3/8"            |
| Suction                         | 3/4"             | 3/4"            | 3/4"            | 3/4"            | 3/4"            | 3/4"            | 3/4"            |
| Coil Drain Connection (FPT)     | 3/4"             | 3/4"            | 3/4"            | 3/4"            | 3/4"            | 3/4"            | 3/4"            |
| <b>ELECTRICAL DATA</b>          |                  |                 |                 |                 |                 |                 |                 |
| Voltage                         | 230/208          | 230/208         | 230/208         | 230/208         | 230/208         | 230/208         | 230/208         |
| Minimum Circuit Ampacity (230V) | 56.2             | 27.0            | 40.0            | 53.0            | 30.1            | 43.1            | 56.2            |
| Minimum Circuit Ampacity (208V) | 49.4             | 23.6            | 34.9            | 46.2            | 26.8            | 38.1            | 49.4            |
| Max. Overcurrent Device (240V)  | 60               | 30              | 40              | 60              | 35              | 45              | 60              |
| Max. Overcurrent Device (208V)  | 50               | 25              | 35              | 50              | 30              | 40              | 50              |
| Minimum VAC                     | 197              | 197             | 197             | 197             | 197             | 197             | 197             |
| Maximum VAC                     | 253              | 253             | 253             | 253             | 253             | 253             | 253             |
| <b>BLOWER MOTOR</b>             |                  |                 |                 |                 |                 |                 |                 |
| Full Load Amps (FLA)            | 4.1              | 1.58            | 1.58            | 1.58            | 4.1             | 4.1             | 4.1             |
| Horsepower (HP)                 | 1/2              | 1/3             | 1/3             | 1/3             | 1/2             | 1/2             | 1/2             |
| <b>SHIP WEIGHT (LBS)</b>        |                  |                 |                 |                 |                 |                 |                 |
|                                 | 109              | 96              | 96              | 96              | 96              | 96              | 96              |

**Note** - Once installed, top of unit must be level or slightly tilted back to ensure proper condensate drainage.



| SMALL CHASSIS<br>(AWUF18-25) |                                   |
|------------------------------|-----------------------------------|
| A                            | 36"                               |
| B                            | 20 <sup>3</sup> / <sub>16</sub> " |
| C                            | 16 <sup>7</sup> / <sub>8</sub> "  |
| D                            | 16"                               |
| E                            | 11"                               |
| Filter                       | 14" x 18" x 1"                    |

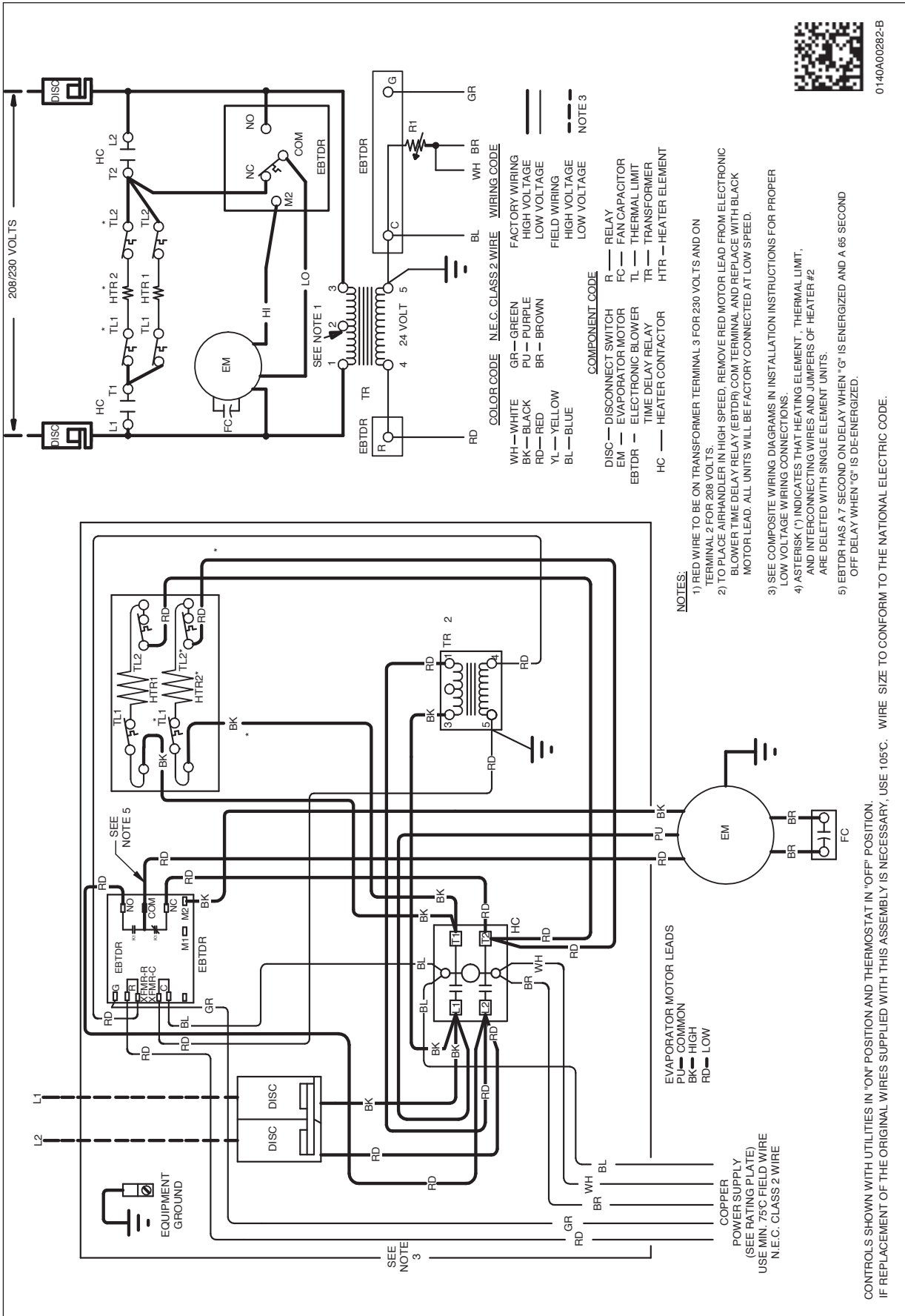
| LARGE CHASSIS<br>(AWUF30-37) |                                  |
|------------------------------|----------------------------------|
| A                            | 36"                              |
| B                            | 24"                              |
| C                            | 21"                              |
| D                            | 19 <sup>7</sup> / <sub>8</sub> " |
| E                            | 15 <sup>7</sup> / <sub>8</sub> " |
| Filter (30, 36,31,32,37)     | 18" x 20" x 1"                   |



|            | A   | B                  | C                  | D                  | E   | F                 | G                 | H                 | I                 | J                 | K                 | L  | M  | N   |
|------------|-----|--------------------|--------------------|--------------------|-----|-------------------|-------------------|-------------------|-------------------|-------------------|-------------------|----|----|-----|
| AWUF 18-25 | 36" | 20 $\frac{1}{4}$ " | 16 $\frac{1}{2}$ " | 16"                | 11" | 1 $\frac{3}{4}$ " | 1 $\frac{1}{2}$ " | 2 $\frac{1}{4}$ " | 7 $\frac{1}{8}$ " | 1 $\frac{1}{8}$ " | 1 $\frac{3}{8}$ " | 4" | 6" | 10" |
| AWUF 30-37 | 36" | 24"                | 21"                | 19 $\frac{1}{8}$ " | 16" | 4 $\frac{1}{8}$ " | 1 $\frac{1}{2}$ " | 1 $\frac{3}{4}$ " | 2"                | 1 $\frac{1}{4}$ " | 2 $\frac{3}{8}$ " | 4" | 8" | 12" |

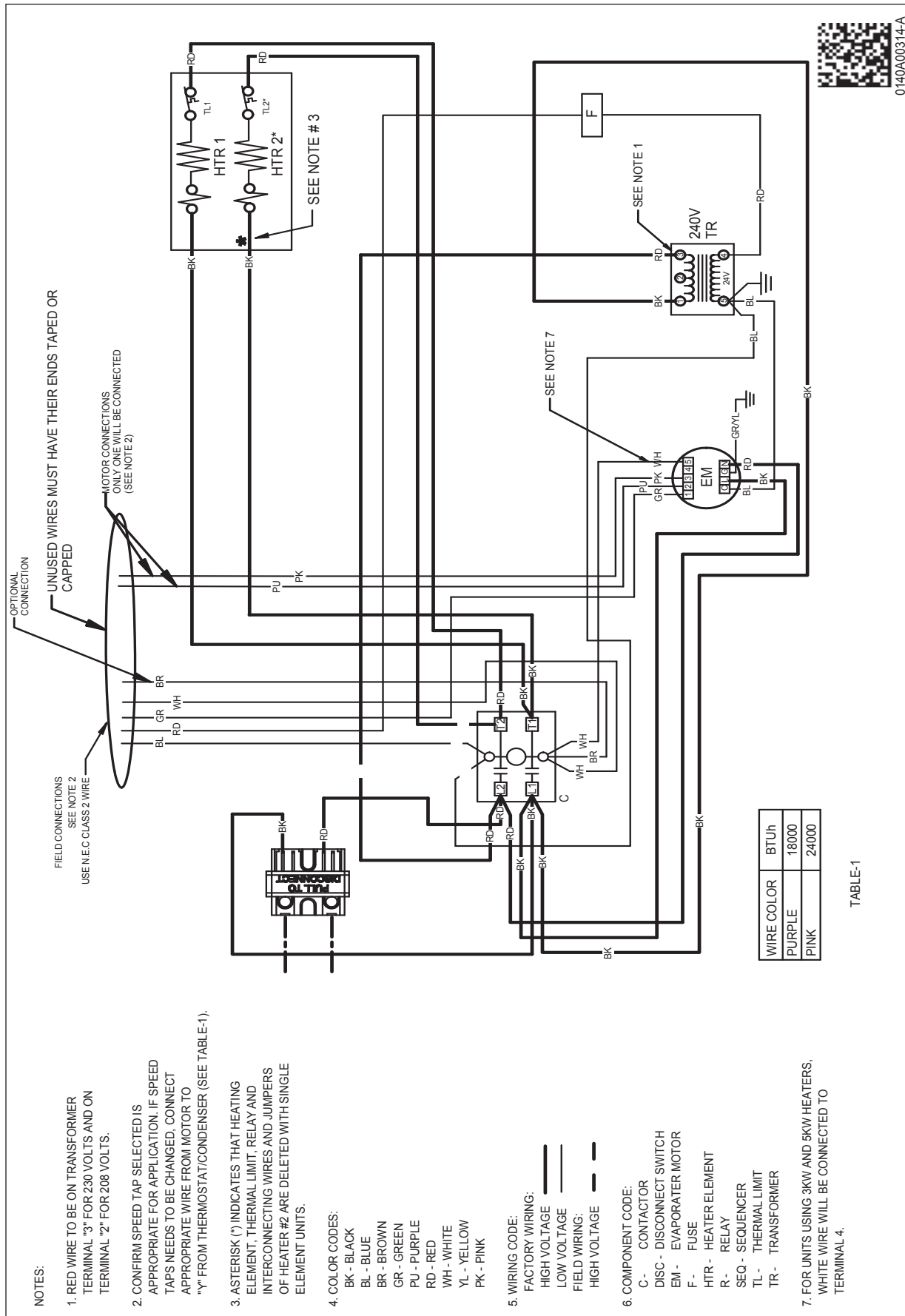
| MODEL                        | MOTOR SPEED | CFM DELIVERED AGAINST EXTERNAL STATIC PRESSURE |      |      |      |      |
|------------------------------|-------------|--|------|------|------|------|
|                              |             | 0.1"   | 0.2" | 0.3" | 0.4" | 0.5" |
| AWUF18XX16B*                 | High        | 755  | 715  | 670  | 615  | 545  |
|                              | Low         | 740  | 700  | 655  | 595  | 535  |
| AWUF19XX16A*                 | T5          | 899  | 870  | 853  | 824  | 800  |
|                              | T4          | 635  | 604  | 580  | 546  | 520  |
|                              | T3          | 799  | 775  | 747  | 727  | 702  |
|                              | T2          | 635  | 604  | 580  | 546  | 520  |
|                              | T1          | 635  | 604  | 580  | 546  | 520  |
| AWUF24XX16B*                 | High        | 900  | 870  | 835  | 795  | 760  |
|                              | Low         | 865  | 835  | 800  | 765  | 725  |
| AWUF25XX16A*                 | T5          | 899  | 870  | 853  | 824  | 800  |
|                              | T4          | 635  | 604  | 580  | 546  | 520  |
|                              | T3          | 799  | 775  | 747  | 727  | 702  |
|                              | T2          | 635  | 604  | 580  | 546  | 520  |
|                              | T1          | 635  | 604  | 580  | 546  | 520  |
| AWUF30XX16B*                 | High        | 1255   | 1120 | 1100 | 1020 | 950  |
|                              | Low         | 1115   | 1010 | 990  | 900  | 820  |
| AWUF310516XX                 | T5          | 875  | 865  | 830  | 805  | 765  |
|                              | T4          | 1005   | 975  | 945  | 920  | 890  |
|                              | T3          | 840  | 795  | 785  | 745  | 700  |
|                              | T2          | 645  | 615  | 550  | 500  | 445  |
|                              | T1          | 645  | 615  | 550  | 500  | 445  |
| AWUF310816XX<br>AWUF321016XX | T5          | 1090   | 1065 | 1040 | 1015 | 985  |
|                              | T4          | 1005   | 975  | 945  | 920  | 890  |
|                              | T3          | 840  | 795  | 785  | 745  | 700  |
|                              | T2          | 645  | 615  | 550  | 500  | 445  |
|                              | T1          | 645  | 615  | 550  | 500  | 445  |
| AWUF36XX16B*                 | High        | 1215   | 1145 | 1070 | 985  | 890  |
|                              | Low         | 1120   | 1065 | 1000 | 915  | 820  |
| AWUF37XX16B*                 | T5          | 1315   | 1290 | 1260 | 1230 | 1200 |
|                              | T4          | 1240   | 1205 | 1175 | 1145 | 1115 |
|                              | T3          | 1175   | 1140 | 1105 | 1075 | 1045 |
|                              | T2          | 1060   | 1020 | 990  | 955  | 925  |
|                              | T1          | 1060   | 1025 | 995  | 960  | 925  |





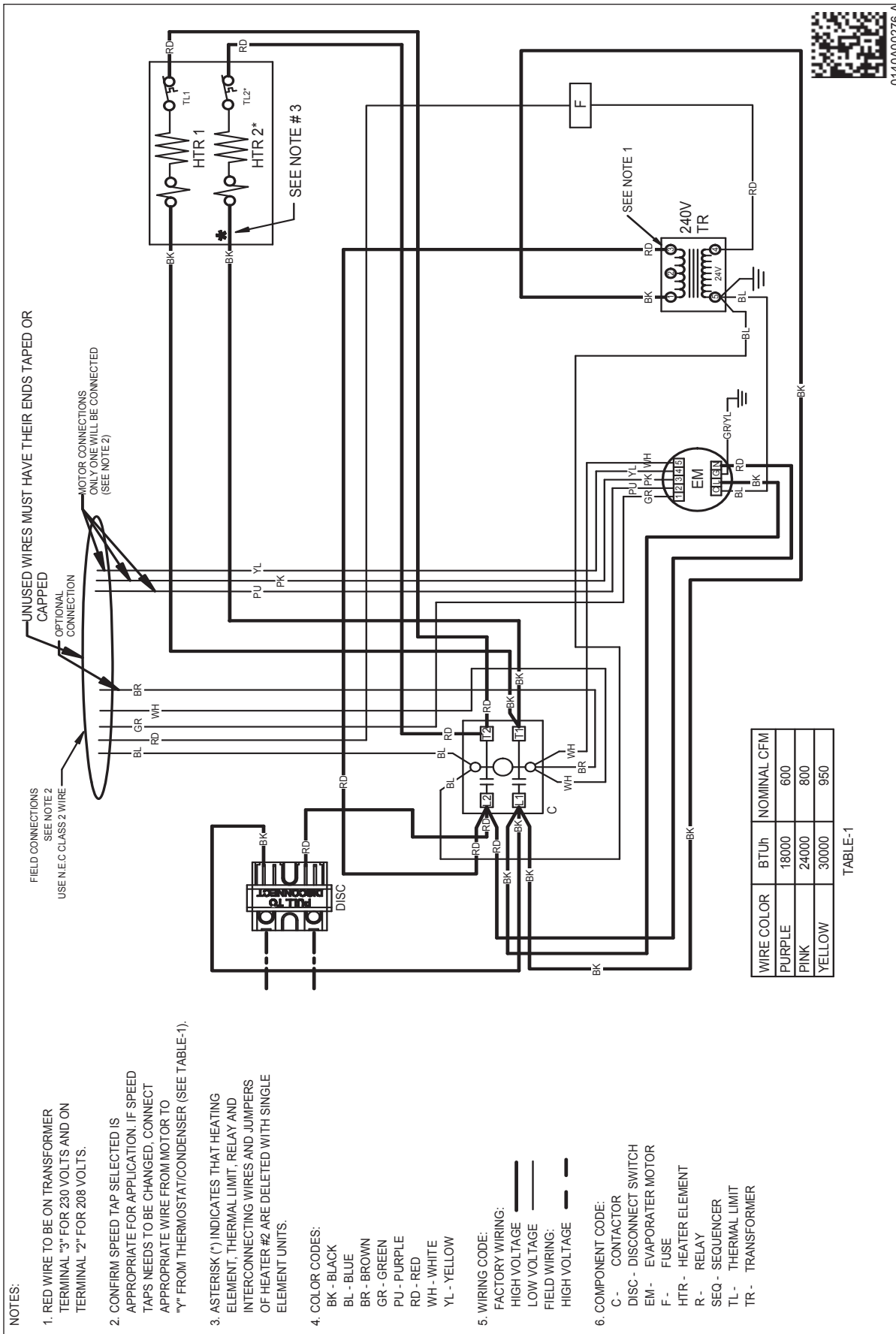
**WARNING**

High Voltage: Disconnect all power before servicing or installing this unit. Multiple power sources may be present. Failure to do so may cause property damage, personal injury, or death.



**WARNING**

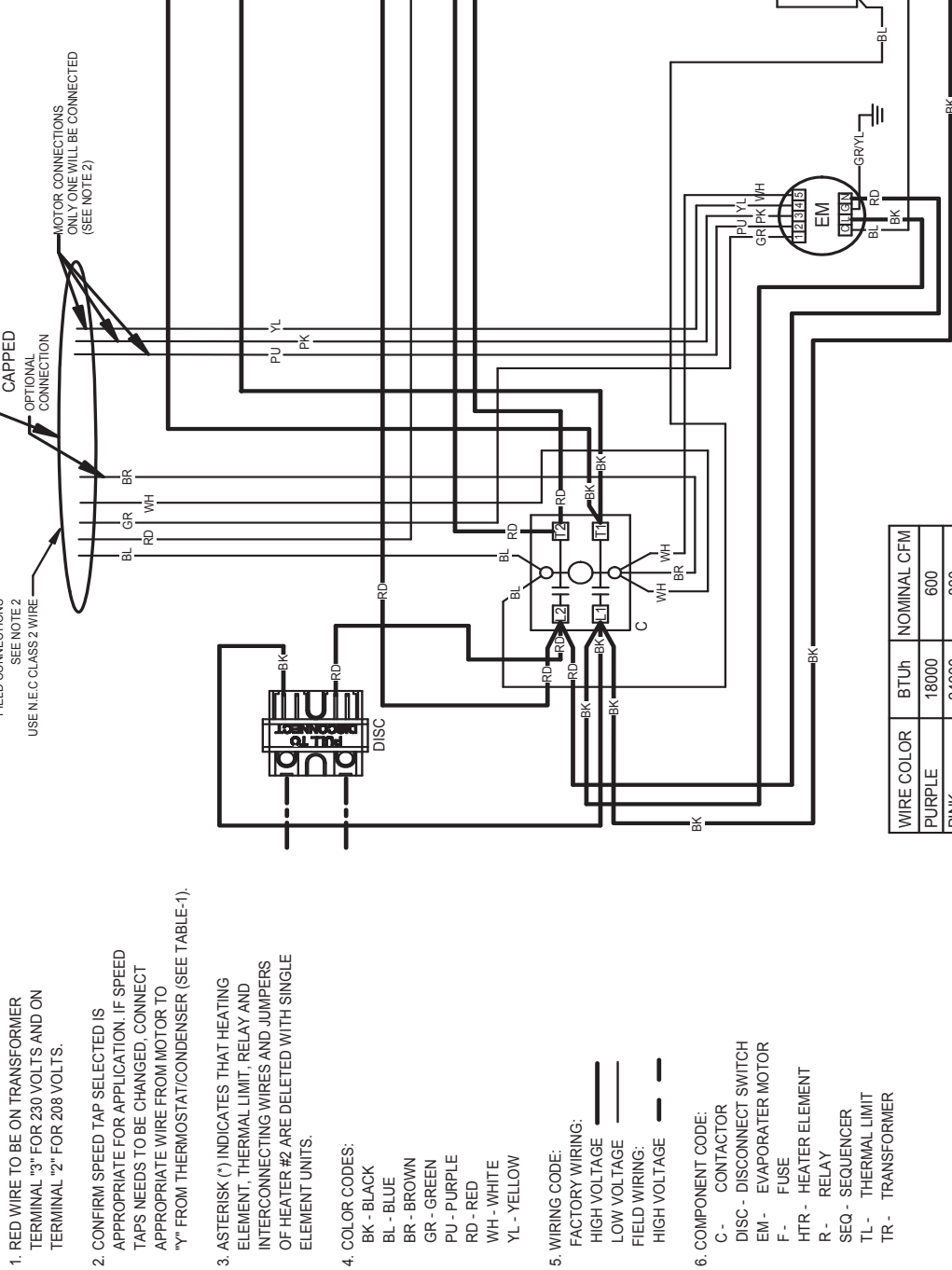
High Voltage: Disconnect all power before servicing or installing this unit. Multiple power sources may be present. Failure to do so may cause property damage, personal injury, or death.



0140A002T6-A



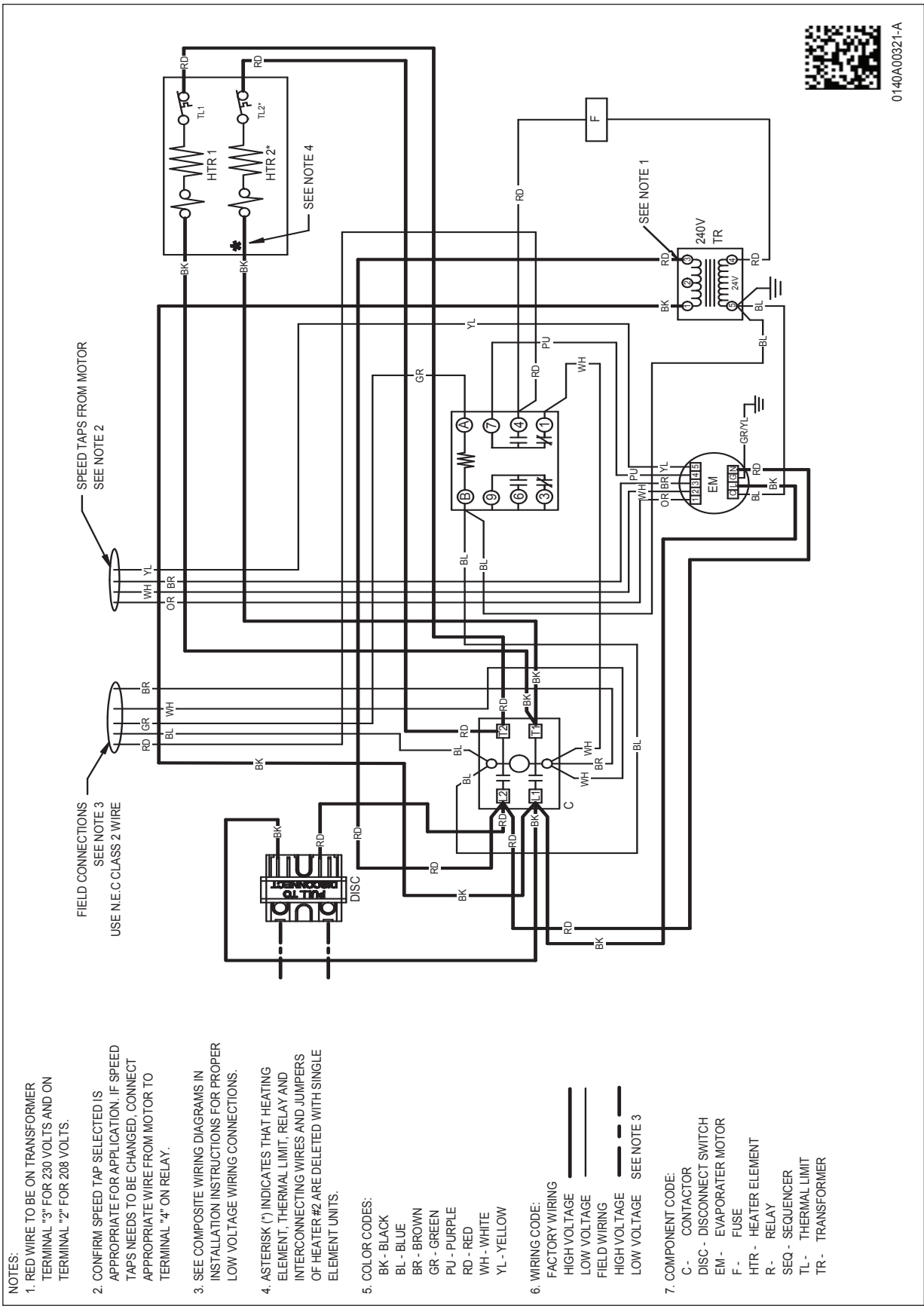
NOTES:  
 1. RED WIRE TO BE ON TRANSFORMER TERMINAL "3" FOR 230 VOLTS AND ON TERMINAL "2" FOR 208 VOLTS.  
 2. CONFIRM SPEED TAP SELECTED IS APPROPRIATE FOR APPLICATION. IF SPEED TAPS NEEDS TO BE CHANGED, CONNECT APPROPRIATE WIRE FROM MOTOR TO "Y" FROM THERMOSTAT/CONDENSER (SEE TABLE-1).  
 3. ASTERISK (\*) INDICATES THAT HEATING ELEMENT, THERMAL LIMIT, RELAY AND INTERCONNECTING WIRES AND JUMPERS OF HEATER #2 ARE DELETED WITH SINGLE ELEMENT UNITS.  
 4. COLOR CODES:  
 BK - BLACK  
 BL - BLUE  
 BR - BROWN  
 GR - GREEN  
 PU - PURPLE  
 RD - RED  
 WH - WHITE  
 YL - YELLOW  
 5. WIRING CODE:  
 FACTORY WIRING: ———  
 HIGH VOLTAGE ———  
 LOW VOLTAGE ———  
 FIELD WIRING: - - -  
 HIGH VOLTAGE - - -  
 6. COMPONENT CODE:  
 C - CONTACTOR  
 DISC - DISCONNECT SWITCH  
 EM - EVAPORATOR MOTOR  
 F - FUSE  
 HTR - HEATER ELEMENT  
 R - RELAY  
 SEQ - SEQUENCER  
 TL - THERMAL LIMIT  
 TR - TRANSFORMER



**WARNING**

High Voltage: Disconnect all power before servicing or installing this unit. Multiple power sources may be present. Failure to do so may cause property damage, personal injury, or death.

0140A00321-A



- NOTES:**
1. RED WIRE TO BE ON TRANSFORMER TERMINAL "3" FOR 230 VOLTS AND ON TERMINAL "2" FOR 208 VOLTS.
  2. CONFIRM SPEED TAP SELECTED IS APPROPRIATE FOR APPLICATION. IF SPEED TAPS NEEDS TO BE CHANGED, CONNECT APPROPRIATE WIRE FROM MOTOR TO TERMINAL "4" ON RELAY.
  3. SEE COMPOSITE WIRING DIAGRAMS IN INSTALLATION INSTRUCTIONS FOR PROPER LOW VOLTAGE WIRING CONNECTIONS.
  4. ASTERISK (\*) INDICATES THAT HEATING ELEMENT, THERMAL LIMIT, RELAY AND INTERCONNECTING WIRES AND JUMPERS OF HEATER #2 ARE DELETED WITH SINGLE ELEMENT UNITS.
  5. COLOR CODES:  
BK - BLACK  
BL - BLUE  
BR - BROWN  
GR - GREEN  
PU - PURPLE  
RD - RED  
WH - WHITE  
YL - YELLOW
  6. WIRING CODE:  
FACTORY WIRING  
HIGH VOLTAGE  
LOW VOLTAGE  
FIELD WIRING  
HIGH VOLTAGE  
LOW VOLTAGE  
SEE NOTE 3
  7. COMPONENT CODE:  
C- CONTACTOR  
DISC - DISCONNECT SWITCH  
EM - EVAPORATER MOTOR  
F- FUSE  
HTR - HEATER ELEMENT  
R- RELAY  
SEQ - SEQUENCER  
TL - THERMAL LIMIT  
TR - TRANSFORMER

**WARNING**

⚡

High Voltage: Disconnect all power before servicing or installing this unit. Multiple power sources may be present. Failure to do so may cause property damage, personal injury, or death.