

SUBMITTAL RECORD

JOB _____
 LOCATION _____
 SUBMITTED TO _____
 SUBMITTAL PREPARED BY _____
 APPROVED BY _____
 DATE _____



Submittal Form Threaded Rod

DESCRIPTION:

Hanging ductwork, equipment, wiring trays or other building components requires secure structural assemblies. These assemblies are comprised of support members attached to building anchor points with fasteners. The support members are often lengths of strut or angle iron. The fastener frequently is threaded rod combined with washers and nuts. Duro Dyne stocks Zinc plated threaded rod in five diameters and in lengths of 6 feet, 10 feet and 12 feet. The rod is shipped in sturdy cardboard tubes.

**FEATURES:**

- Zinc plated
- Low carbon steel meeting the minimum requirements of ASTM A307, grade A
- 60,000 PSI Tensile Strength
- Five diameters; 1/4", 3/8", 1/2", 5/8", 3/4"
- Lengths of 6 feet, 10 feet, and 12 feet (on select diameters)
- Shipped in sturdy cardboard tubes
- Threads
 - 1/4" – 20 threads per inch
 - 3/8" – 16 threads per inch
 - 1/2" – 13 threads per inch
 - 5/8" – 11 threads per inch
 - 3/4" – 10 threads per inch



Ordering Information

Item #	Code	Description	Weight (lbs.)	Packaging
21164	TR14ZP06	Zinc Plated 1/4in Threaded Rod 6ft	35	50 / Tube
21165	TR38ZP06	Zinc Plated 3/8in Threaded Rod 6ft	43	25 / Tube
21166	TR12ZP06	Zinc Plated 1/2in Threaded Rod 6ft	37	12 / Tube
21161	TR58ZP06	Zinc Plated 5/8in Threaded Rod 6ft	40	8 / Tube
21162	TR34ZP06	Zinc Plated 3/4in Threaded Rod 6ft	38	5 / Tube
21167	TR14ZP10	Zinc Plated 1/4in Threaded Rod 10ft	59	50 / Tube
21168	TR38ZP10	Zinc Plated 3/8in Threaded Rod 10ft	72	25 / Tube
21169	TR12ZP10	Zinc Plated 1/2in Threaded Rod 10ft	62	12 / Tube
21163	TR14ZP12	Zinc Plated 1/4in Threaded Rod 12ft Made in the U.S.A	70	50 / Tube
21159	TR38ZP12	Zinc Plated 3/8in Threaded Rod 12ft Made in the U.S.A	86	25 / Tube
21160	TR12ZP12	Zinc Plated 1/2in Threaded Rod 12ft Made in the U.S.A	74	12 / Tube
21188	TR38ZP12	Zinc Plated 3/8in Threaded Rod 12ft	86	25 / Tube
21189	TR12ZP12	Zinc Plated 1/2in Threaded Rod 12ft	78	12 / Tube

Duro Dyne East Division, Bay Shore, NY
 Duro Dyne Midwest Division, Fairfield, OH
 Duro Dyne West Division, Fontana, CA
 Duro Dyne Canada, Lachine, Quebec, Canada

631-249-9000 Fax: 631-249-8346
 513-870-6000 Fax: 513-870-6005
 562-926-1774 Fax: 562-926-5778
 514-422-9760 Fax: 514-636-0328

www.durodyne.com E-mail: durodyne@durodyne.com



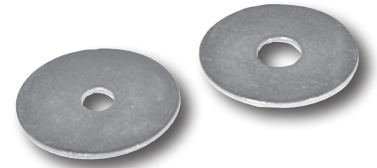
©2014 Duro Dyne Corporation
 Printed in USA 3/14
 B0050013

-THREADED ROD ACCESSORIES-

Duro Dyne's Threaded Rod Accessories consist of flat & fender washers, hex nuts, bolts and rod couplers. These accessories work in conjunction with Duro Dyne Threaded Rod to create a secure system for hanging ductwork and equipment.

Fender Washer

<u>Item #</u>	<u>Code</u>	<u>Description</u>
21276	FDW12B	1/2in x 1.5in Fender Washer 50# Box
21273	FDW12C	1/2in x 1.5in Fender Washer 100/Pk
21274	FDW14B	1/4in x 1.5in Fender Washer 50# Box
21271	FDW14C	1/4in x 1.5in Fender Washer 100/Pk
21275	FDW38B	3/8in x 1.5in Fender Washer 50# Box
21272	FDW38C	3/8in x 1.5in Fender Washer 100/Pk



Fender Washer

Flat Washer

<u>Item #</u>	<u>Code</u>	<u>Description</u>
21106	FW12B	1/2in Flat Washer 50# Box
21107	FW12C	1/2in Flat Washer 100/Pk
21133	FW14B	1/4in Flat Washer 50# Box
21134	FW14C	1/4in Flat Washer 100/Pk
21140	FW38B	3/8in Flat Washer 50# Box
21141	FW38C	3/8in Flat Washer 100/Pk



Flat Washer

Hex Nut

<u>Item #</u>	<u>Code</u>	<u>Description</u>
21132	HN12B	1/2-13 Hex Nut 1800/Bx
21131	HN12C	1/2-13 Hex Nut 100/Pk
21077	HN14B	1/4-20 Hex Nut 9000/Box
21069	HN14C	1/4-20 Hex Nut 100/Pk
21067	HN38C	3/8-16 Hex Nut 100/Pk



Hex Nut

Hex Nut Stainless

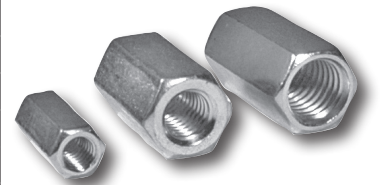
<u>Item #</u>	<u>Code</u>	<u>Description</u>
21086	HN38CSS	3/8in 302SS Stainless Hex Nut

Bolt Stainless

<u>Item #</u>	<u>Code</u>	<u>Description</u>
21087	DOMB381CSS	3/8in x 1in 304SS Stainless Bolt

Rod Coupling

<u>Item #</u>	<u>Code</u>	<u>Description</u>
21127	STRC12B	1/2in Rod Coupling-1-1/4in Deep 800/Bx
21130	STRC12C	1/2in Rod Coupling-1-1/4in Deep 100/Pk
21125	STRC14B	1/4in Rod Coupling-7/8in Deep 2500/Bx
21128	STRC14C	1/4in Rod Coupling-7/8in Deep 100/Pk
21126	STRC38B	3/8in Rod Coupling-1-1/4in Deep 1250/Bx
21129	STRC38C	3/8in Rod Coupling-1-1/4in Deep 100/Pk



Rod Coupling

Nut & Bolt

<u>Item #</u>	<u>Code</u>	<u>Description</u>
21061	DOMNB14	1/4in Nut & Bolt Set 125/Pk
21060	DOMNB38	3/8in Nut & Bolt Set 125/Pk
21068	DOMB381C	3/8in -16 x 1in Bolt Only 100/Bx
21063	DOMB38114B	3/8-16 x 1-1/4 Bolt Bulk 1000/Bx
21064	DOMB38112B	3/8-16 x 1-1/2 Bolt Bulk 800/Bx
21065	DOMB381B	3/8-16 x 1 Bolt Bulk 1000/Bx

Duro Dyne East Division, Bay Shore, NY
 Duro Dyne Midwest Division, Fairfield, OH
 Duro Dyne West Division, Fontana, CA
 Duro Dyne Canada, Lachine, Quebec, Canada

631-249-9000 Fax: 631-249-8346
 513-870-6000 Fax: 513-870-6005
 562-926-1774 Fax: 562-926-5778
 514-422-9760 Fax: 514-636-0328

www.durodyne.com E-mail: durodyne@durodyne.com



©2014 Duro Dyne Corporation
 Printed in USA 3/14
 B0050013